



How to change fuel filter
on **SEAT TOLEDO I (1L)** –
replacement guide

SIMILAR VIDEO TUTORIAL



This video shows the replacement procedure of a similar car part on another vehicle

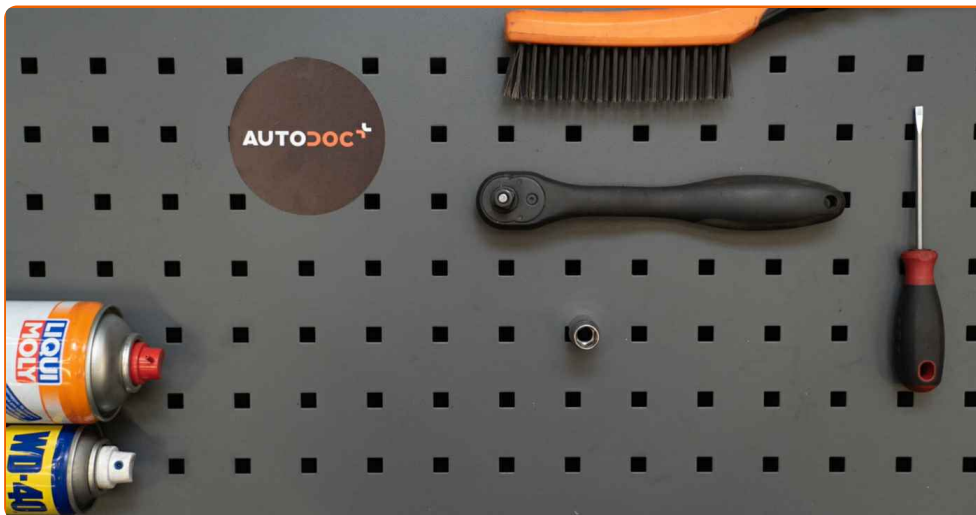
Important!

This replacement procedure can be used for:
SEAT TOLEDO I (1L) 1.6 i, SEAT TOLEDO I (1L) 1.8 i, SEAT TOLEDO I (1L) 2.0 i, SEAT TOLEDO I (1L) 2.0 i 16V

The steps may slightly vary depending on the car design.

This tutorial was created based on the replacement procedure for a similar car part on: AUDI A4 Saloon (8D2, B5) 1.6

REPLACEMENT: FUEL FILTER – SEAT TOLEDO I (1L).
 TOOLS YOU MIGHT NEED:



- Wire brush
- WD-40 spray
- All-purpose cleaning spray
- Drive socket # 10
- Ratchet wrench
- Flat screwdriver
- Fluid container
- Wheel chock

Buy tools

Replacement: fuel filter – SEAT TOLEDO I (1L). AUTODOC experts recommend:

- Ensure adequate ventilation of the workplace. Fuel vapors are poisonous.
- Please note: all work on the car – SEAT TOLEDO I (1L) – should be done with the engine switched off.

CARRY OUT REPLACEMENT IN THE FOLLOWING ORDER:

1 Open the fuel door.



2 Unscrew the fuel filler cap.



3 Secure the wheels with chocks.

4 Lift the car using a jack or place it over an inspection pit.



5 Clean the fuel filter bracket. Use a wire brush. Use WD-40 spray.

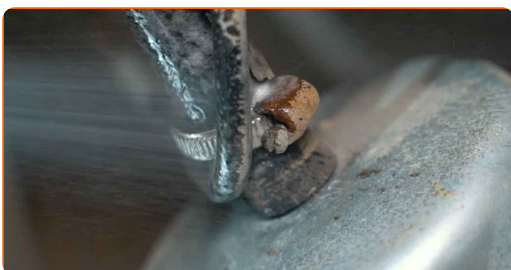
6 Unscrew the fastening bolts of the fuel filter bracket. Use a drive socket #10. Use a ratchet wrench.



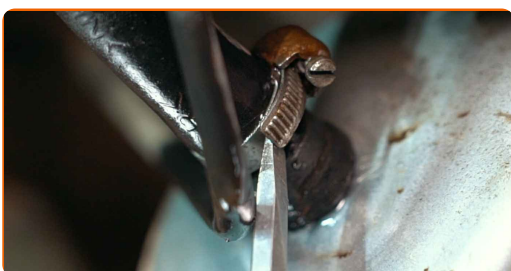
7 Prepare a container for fluids.



8 Clean the fuel lines. Use a wire brush. Use all-purpose cleaning spray.



9 Loosen the fastening clamps of the fuel filter pipes. Use a flat screwdriver.



10 Detach the tubes from the fuel filter.



11 Remove the fuel filter bracket.



12 Attach the pipe to the fuel filter.



13 Install the fuel filter bracket.



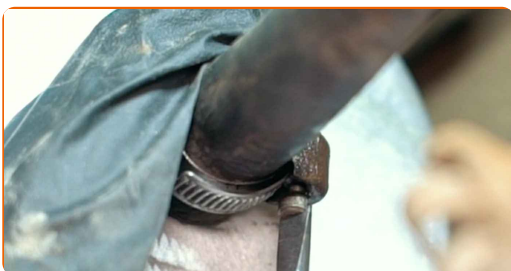
14 Attach the pipe to the fuel filter.



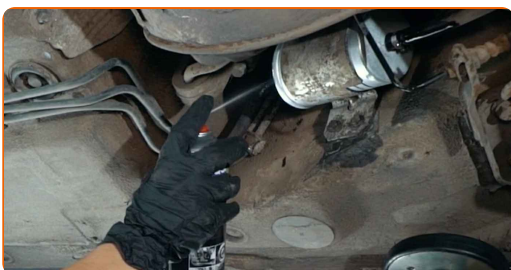
15 Screw in the fastening bolts of the fuel filter bracket. Use a drive socket #10. Use a ratchet wrench.



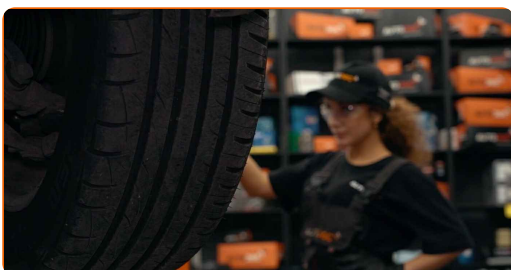
16 Tighten the fastening clamps of the fuel filter pipes. Use a flat screwdriver.



17 Clean the fuel lines. Use all-purpose cleaning spray.

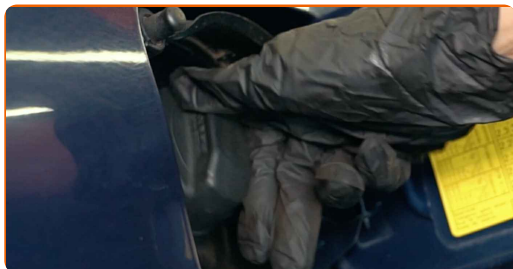


18 Lower the car.

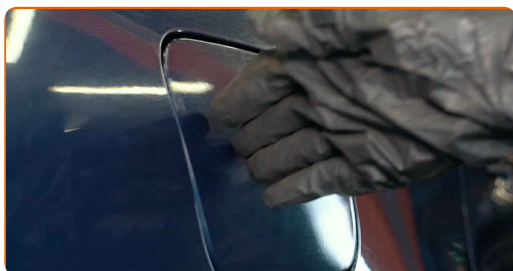


19 Remove the jacks and chocks.

20 Tighten the fuel filler cap.



21 Close the fuel door.



Replacement: fuel filter – SEAT TOLEDO I (1L). Professionals recommend:

- Before starting off, switch the ignition on and off several times. This should be done to activate the fuel pump to make it pump fuel through the fuel system.

22 Run the engine for a few minutes. This is necessary in order to make sure that the component operates properly.

23 Shut off the engine.

WELL DONE! 

VIEW MORE TUTORIALS

AUTODOC – TOP QUALITY AND AFFORDABLE CAR PARTS ONLINE

AUTODOC MOBILE APP: GREAT DEALS AND CONVENIENT SHOPPING



+ AUTODOC

GET IT ON
Google Play

 Download on the
App Store

Download

A GREAT SELECTION OF SPARE PARTS FOR YOUR CAR

FUEL FILTER: A WIDE SELECTION

DISCLAIMER:

The document contains only general recommendations that may be useful for you when you perform repair or replacement work. AUTODOC shall not be liable for any loss, injury, damage of property occurring in the repair or replacement process due to incorrect use or misinterpretation of the provided information.

AUTODOC shall not be liable for any possible mistakes and uncertainties in this guide. The information provided is for information purposes only and cannot replace advice from specialists.

AUTODOC shall not be liable for incorrect or hazardous usage of equipment, tools and car parts. AUTODOC strongly recommends to be careful and observe the safety rules when performing repair or replacement works. Remember: usage of low quality auto parts does not guarantee you the appropriate level of road safety.

© Copyright 2022 – All the contents of this website, in particular texts, photographs and graphics, are protected by copyright. All rights, including reproduction, publication, editing and translation rights, are reserved by AUTODOC GmbH.