



How to change pollen  
filter on **SEAT Inca (6K9)**  
– replacement guide

## SIMILAR VIDEO TUTORIAL



This video shows the replacement procedure of a similar car part on another vehicle

### Important!

This replacement procedure can be used for:

SEAT Inca (6K9) 1.4 i, SEAT Inca (6K9) 1.6 i, SEAT Inca (6K9) 1.9 D, SEAT Inca (6K9) 1.9 SDI, SEAT Inca (6K9) 1.7 D, SEAT Inca (6K9) 1.4 16V

The steps may slightly vary depending on the car design.

This tutorial was created based on the replacement procedure for a similar car part on: VW Polo Hatchback (6N1) 1.0

REPLACEMENT: POLLEN FILTER – SEAT INCA (6K9).  
TOOLS YOU NEED:



• Microfibre towel

• Fender cover

**Buy tools**

**Replacement: pollen filter – SEAT Inca (6K9). Tip from AUTODOC experts:**

- Replace the cabin filter at least once every six months, in early spring and autumn seasons.
- Follow the terms, recommendations and requirements of the part operation provided by the manufacturer.
- If the air flow into the cabin has sharply reduced, replace the filter before a scheduled maintenance.
- Please note: all work on the car – SEAT Inca (6K9) – should be done with the engine switched off.

**CARRY OUT REPLACEMENT IN THE FOLLOWING ORDER:**

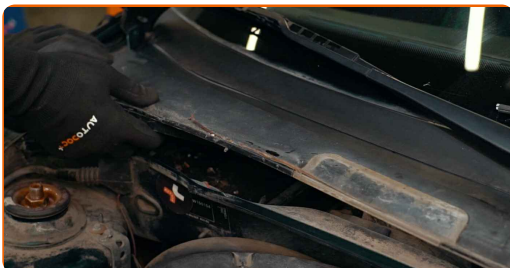
**1** Open the hood.

**2** Use a fender protection cover to prevent damaging paintwork and plastic parts of the car.

**3** Remove the cowl grille seal.



**4** Raise up and remove the cowl grille.



**5** Press the pollen filter retaining clips to release them.



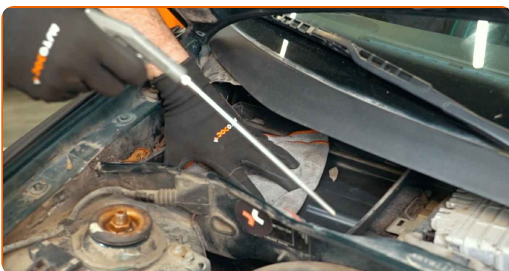
**6** Remove the cabin filter.



**Replacement: pollen filter – SEAT Inca (6K9). Tip from AUTODOC:**

- Do not attempt to clean and reuse the filter - it will affect the quality of air cleaning inside the car.
- Cover the cabin filter air ducts with a microfibre cloth to keep dirt and dust out.

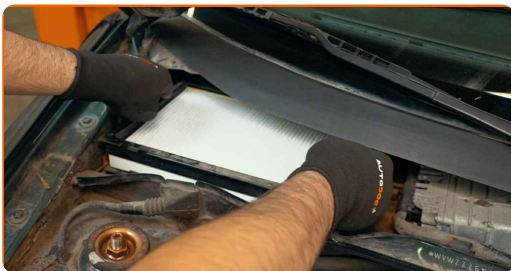
**7** Clean the cabin filter housing and cover.



**8** Remove the microfibre cloth from the cabin filter air ducts.

9

Install the cabin filter to its mounting seat. Make sure that the filter edge fits tight to the housing.

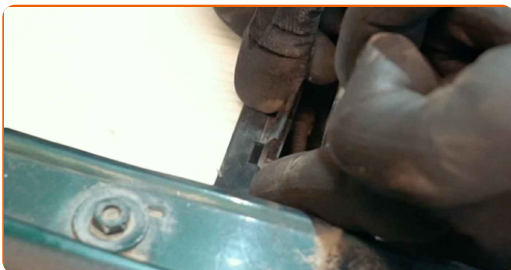


Replacement: pollen filter – SEAT Inca (6K9). Tip:

- Follow the air flow direction arrow on the filter.
- Check out the correct location of the filter element. Do not skew.
- Attention! Use quality filters – SEAT Inca (6K9).

10

Lock the pollen filter retaining clips in place.



11

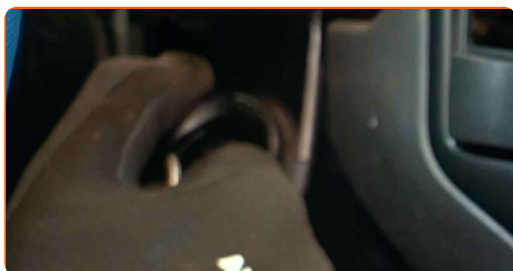
Install and secure the cowl grille.



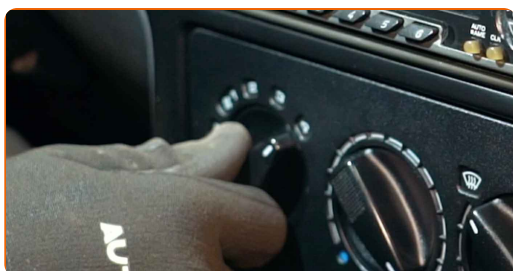
**12** Install the cowl grille seal.



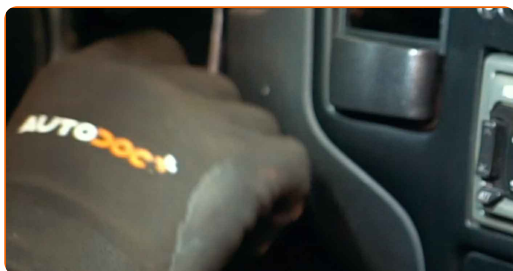
**13** Switch on the ignition.



**14** Switch on the air conditioning system. This is necessary in order to make sure that the component operates properly.



**15** Switch off the ignition.



**16** Remove the fender protection cover.

17

Close the hood.

**WELL DONE!** 

**VIEW MORE TUTORIALS**



# AUTODOC – TOP QUALITY AND AFFORDABLE CAR PARTS ONLINE

**AUTODOC MOBILE APP: GREAT DEALS AND CONVENIENT SHOPPING**



**+ AUTODOC**

GET IT ON  
**Google Play**

Download on the  
**App Store**

**Download**

**A GREAT SELECTION OF SPARE PARTS FOR YOUR CAR**

**POLLEN FILTER: A WIDE SELECTION**

## **DISCLAIMER:**

The document contains only general recommendations that may be useful for you when you perform repair or replacement work. AUTODOC shall not be liable for any loss, injury, damage of property occurring in the repair or replacement process due to incorrect use or misinterpretation of the provided information.

AUTODOC shall not be liable for any possible mistakes and uncertainties in this guide. The information provided is for information purposes only and cannot replace advice from specialists.

AUTODOC shall not be liable for incorrect or hazardous usage of equipment, tools and car parts. AUTODOC strongly recommends to be careful and observe the safety rules when performing repair or replacement works. Remember: usage of low quality auto parts does not guarantee you the appropriate level of road safety.

© Copyright 2023 – All the contents of this website, in particular texts, photographs and graphics, are protected by copyright. All rights, including reproduction, publication, editing and translation rights, are reserved by AUTODOC SE.