



How to change rear
brake shoes on **SEAT**
IBIZA SPORTCOUPE Box
Body / Hatchback (6J1) –
replacement guide

SIMILAR VIDEO TUTORIAL



This video shows the replacement procedure of a similar car part on another vehicle

Important!

This replacement procedure can be used for:

SEAT IBIZA SPORTCOUPE Box Body / Hatchback (6J1) 1.6 TDI, SEAT IBIZA SPORTCOUPE Box Body / Hatchback (6J1) 1.2, SEAT IBIZA SPORTCOUPE Box Body / Hatchback (6J1) 1.2 TDI

The steps may slightly vary depending on the car design.

This tutorial was created based on the replacement procedure for a similar car part on: VW GOLF III (1H1) 1.4

REPLACEMENT: BRAKE SHOES – SEAT IBIZA
SPORTCOUPE BOX BODY / HATCHBACK (6J1). TOOLS
YOU'LL NEED:



- Wire brush
- WD-40 spray
- Copper grease
- Combination spanner #24
- Wheel impact socket #17
- Ratchet wrench
- Torque wrench
- Pliers
- Flat chisel
- Hammer
- Rubber mallet
- Flat Screwdriver
- Nippers
- Wheel chock

Buy tools

Replacement: brake shoes – SEAT IBIZA SPORTCOUPE Box Body / Hatchback (6J1). AUTODOC experts recommend:

- Perform the replacement of brake pads in complete set for each axis. This provides effective braking.
- The replacement procedure is identical for all brake pads on the same axle.
- All work should be done with the engine stopped.

REPLACEMENT: BRAKE SHOES – SEAT IBIZA SPORTCOUPE BOX BODY / HATCHBACK (6J1). TAKE THE FOLLOWING STEPS:

1 Open the bonnet. Unscrew the brake fluid reservoir cap.

2 Secure the wheels with chocks.



3 Loosen the wheel mounting bolts. Use wheel impact socket #17.



4 Raise the rear of the car and secure on supports.

5 Unscrew the wheel bolts.



AUTODOC recommends:

- Warning! To avoid injury, hold the wheel while unscrewing the fastening bolts.
SEAT IBIZA SPORTCOUPE Box Body / Hatchback (6J1)

6 Remove the wheel.



7 Remove the hub bearing protection cap. Use a flat metal-working chisel. Use a hammer. Use a flat screwdriver.



Please note!

- Some cars are not equipped with wheel hub caps.

8 Remove the cotter pin securing the hub nut. Use nippers.



9 Unscrew the wheel hub axle nut. Use a combination spanner #24.



10 Remove the brake drum.



Replacement: brake shoes – SEAT IBIZA SPORTCOUPE Box Body / Hatchback (6J1). Tip:

- Examine the brake drum. Replace it if necessary.

11 Remove the retaining spring of the brake pads. Use pliers.



12 Remove the brake pads retaining clips. Use pliers.



13 Pull both brake shoes with the adjuster from the working brake cylinder, avoiding damage to the boots.



Replacement: brake shoes – SEAT IBIZA SPORTCOUPE Box Body / Hatchback (6J1). Tip from AUTODOC experts:

- Don't press the brake pedal after removing the rear brake drum shoes. This will cause the piston to fall out of the brake cylinder, leakage of brake fluid and depressurization of the system.

14 Disconnect the parking brake cable. Use nippers.



15 Remove the retaining spring of the brake pads.



16 Remove both shoes from the mounting bracket.



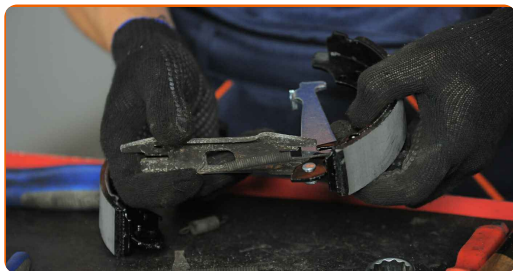
17 Perform further demounting of the upper retaining spring and the adjuster mechanism. Use pliers.



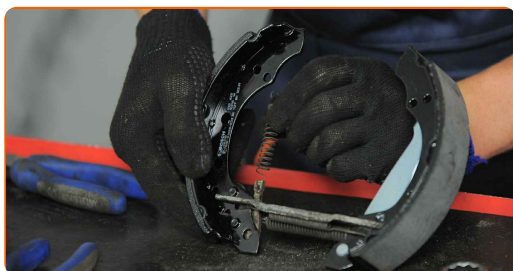
18 Install the upper retaining springs and adjustment mechanism on new brake shoes. Use pliers.



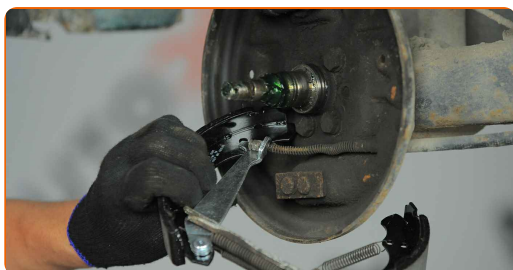
19 Place the brake shoes so that their inward edges rest on the anchor plate.



20 Install the retaining spring of the brake pads.



21 Connect the parking brake cable to the parking brake lever. Use nippers. Use pliers.



22 Attach the brake shoes, together with the brake adjuster, to the wheel cylinder.



23 Install the brake pads retaining clips. Use pliers.



24 Install the retaining spring of the brake pads. Use pliers.



25 Install a brake drum.



26 Screw in the wheel hub fastener. Use a combination spanner #24.



27 Install the cotter pin of the hub bearing fastening nut. Use a hammer. Use nippers.



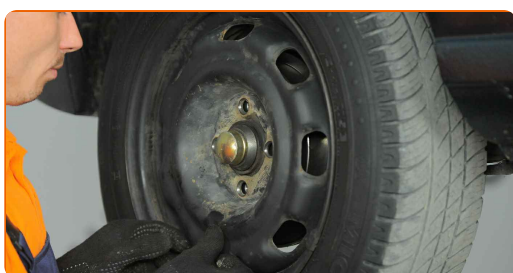
28 Install the hub bearing protection cap. Use a rubber mallet.



29 Clean the wheel rim mounting seat. Use a wire brush. Treat the surface where the wheel rim contacts the brake drum. Use copper grease.



30 Install the wheel.



Replacement: brake shoes – SEAT IBIZA SPORTCOUPE Box Body / Hatchback (6J1). Professionals recommend:

- To avoid injury, hold up the wheel when screwing in the fastening bolts.

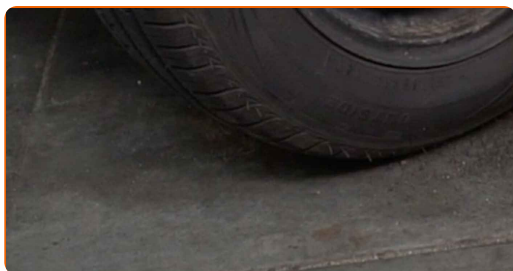
31 Screw in the wheel bolts. Use wheel impact socket #17.



32 Lower the car and working in a cross order, tighten the wheel bolts. Use wheel impact socket #17. Use a torque wrench. Tighten it to 120 nm torque.



33 Remove the jacks and chocks.



Replacement: brake shoes – SEAT IBIZA SPORTCOUPE Box Body / Hatchback (6J1). Tip from AUTODOC experts:

- Check the brake fluid level in the expansion tank and refill if necessary.

34 Tighten the brake fluid reservoir cap. Close the hood.

AUTODOC recommends:

- SEAT IBIZA SPORTCOUPE Box Body / Hatchback (6J1) – Press the brake pedal several times with the engine shut down until you feel the resistance built up.
- Slow down smoothly for first 150-200 km after the brake pads replacement. Avoid unnecessary and sharp braking to a stop.

35

Adjust the gap between the brake shoes and the drum on SEAT IBIZA SPORTCOUPE Box Body / Hatchback (6J1), pressing the brake pedal 10-15 times.



WELL DONE! 

[VIEW MORE TUTORIALS](#)

AUTODOC – TOP QUALITY AND AFFORDABLE CAR PARTS ONLINE

AUTODOC MOBILE APP: GREAT DEALS AND CONVENIENT SHOPPING



A GREAT SELECTION OF SPARE PARTS FOR YOUR CAR

BRAKE SHOES: A WIDE SELECTION

DISCLAIMER:

The document contains only general recommendations that may be useful for you when you perform repair or replacement work. AUTODOC shall not be liable for any loss, injury, damage of property occurring in the repair or replacement process due to incorrect use or misinterpretation of the provided information.

AUTODOC shall not be liable for any possible mistakes and uncertainties in this guide. The information provided is for information purposes only and cannot replace advice from specialists.

AUTODOC shall not be liable for incorrect or hazardous usage of equipment, tools and car parts. AUTODOC strongly recommends to be careful and observe the safety rules when performing repair or replacement works. Remember: usage of low quality auto parts does not guarantee you the appropriate level of road safety.

© Copyright 2023 – All the contents of this website, in particular texts, photographs and graphics, are protected by copyright. All rights, including reproduction, publication, editing and translation rights, are reserved by AUTODOC SE.