



How to change
serpentine belt on **SEAT**
Ibiza IV ST (6J8, 6P8) –
replacement guide

SIMILAR VIDEO TUTORIAL



This video shows the replacement procedure of a similar car part on another vehicle

Important!

This replacement procedure can be used for:

SEAT Ibiza IV ST (6J8, 6P8) 1.2 TDI, SEAT Ibiza IV ST (6J8, 6P8) 1.6 TDI

The steps may slightly vary depending on the car design.

This tutorial was created based on the replacement procedure for a similar car part on: VW Passat Saloon (362) 2.0 TDI

REPLACEMENT: SERPENTINE BELT – SEAT IBIZA IV ST (6J8, 6P8). LIST OF THE TOOLS YOU'LL NEED:



- Torque wrench
- Combination spanner #16
- Wheel impact socket #17
- Fender cover
- Wheel chock

[Buy tools](#)

Replacement: serpentine belt – SEAT Ibiza IV ST (6J8, 6P8). AUTODOC experts recommend:

- All work should be done with the engine stopped.

CARRY OUT REPLACEMENT IN THE FOLLOWING ORDER:

- 1 Open the bonnet.
- 2 Use a fender protection cover to prevent damaging paintwork and plastic parts of the car.
- 3 Secure the wheels with chocks.
- 4 Loosen the wheel mounting bolts. Use wheel impact socket #17.
- 5 Lift the car using a jack or place it over an inspection pit.
- 6 Unscrew the wheel bolts.

AUTODOC recommends:

- Warning! To avoid injury, hold the wheel while unscrewing the fastening bolts.
SEAT Ibiza IV ST (6J8, 6P8)

- 7 Remove the wheel.

8 Pull aside the V-ribbed belt tensioner pulley. Use a combination spanner #16.



9 Remove the V-ribbed belt.



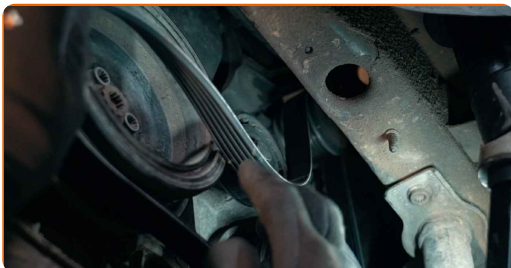
10 Return the tensioner pulley to its initial position. Use a combination spanner #16.

Replacement: serpentine belt – SEAT Ibiza IV ST (6J8, 6P8). Professionals recommend:

- Check the condition of the tensioner pulley and idler pulley. Replace them if necessary.

11 Pull aside the V-ribbed belt tensioner pulley. Use a combination spanner #16.

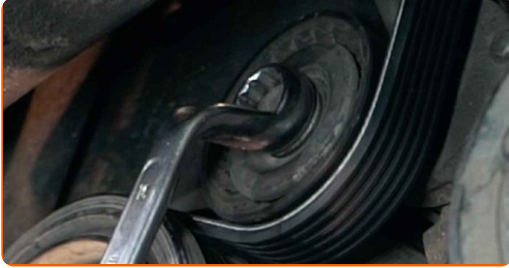
12 Install the V-ribbed belt.



Replacement: serpentine belt – SEAT Ibiza IV ST (6J8, 6P8). Tip:

- Make sure that the V-ribbed belt fits all pulleys snugly.

13 Return the tensioner pulley to its initial position. Use a combination spanner #16.



14 Install the wheel.

AUTODOC recommends:

- To avoid injury, hold up the wheel when screwing in the fastening bolts.

15 Screw in the wheel bolts. Use wheel impact socket #17.

16 Lower the car and working in a cross order, tighten the wheel bolts. Use wheel impact socket #17. Use a torque wrench. Tighten it to 120 Nm torque.

17 Remove the jacks and chocks.

18 Run the engine for a few minutes. This is necessary in order to make sure that the component operates properly.

19 Shut off the engine.

20 Remove the fender protection cover.

21

Close the hood.

WELL DONE! 

VIEW MORE TUTORIALS

AUTODOC – TOP QUALITY AND AFFORDABLE CAR PARTS ONLINE

AUTODOC MOBILE APP: GREAT DEALS AND CONVENIENT SHOPPING



A GREAT SELECTION OF SPARE PARTS FOR YOUR CAR

SERPENTINE BELT: A WIDE SELECTION

(i) DISCLAIMER:

The document contains only general recommendations that may be useful for you when you perform repair or replacement work. AUTODOC shall not be liable for any loss, injury, damage of property occurring in the repair or replacement process due to incorrect use or misinterpretation of the provided information.

AUTODOC shall not be liable for any possible mistakes and uncertainties in this guide. The information provided is for information purposes only and cannot replace advice from specialists.

AUTODOC shall not be liable for incorrect or hazardous usage of equipment, tools and car parts. AUTODOC strongly recommends to be careful and observe the safety rules when performing repair or replacement works. Remember: usage of low quality auto parts does not guarantee you the appropriate level of road safety.

© Copyright 2022 – All the contents of this website, in particular texts, photographs and graphics, are protected by copyright. All rights, including reproduction, publication, editing and translation rights, are reserved by AUTODOC GmbH.