



How to change rear  
engine mounts on **SEAT  
Ibiza IV Sportcoupe (6J,  
6P)** – replacement guide

## SIMILAR VIDEO TUTORIAL



This video shows the replacement procedure of a similar car part on another vehicle

### Important!

This replacement procedure can be used for:  
SEAT Ibiza IV Sportcoupe (6J, 6P) 1.2

The steps may slightly vary depending on the car design.

This tutorial was created based on the replacement procedure for a similar car part on: SKODA Fabia I Combi (6Y5) 1.2

REPLACEMENT: ENGINE MOUNTS – SEAT IBIZA IV SPORTCOUPE (6J, 6P). LIST OF THE TOOLS YOU'LL NEED:



- Wire brush
- WD-40 spray
- Copper grease
- Drive socket # 12
- Drive socket # 16
- Ratchet wrench
- Torque wrench
- Phillips screwdriver
- Fender cover

**Buy tools**

Replacement: engine mounts – SEAT Ibiza IV Sportcoupe (6J, 6P). AUTODOC recommends:

- All work should be done with the engine stopped.

## REPLACEMENT: ENGINE MOUNTS – SEAT IBIZA IV SPORTCOUPE (6J, 6P). USE THE FOLLOWING PROCEDURE:

**1** Open the bonnet.

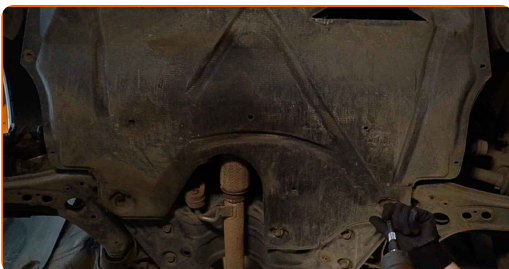
**2** Use a fender protection cover to prevent damaging paintwork and plastic parts of the car.

**3** Lift the car using a jack or place it over an inspection pit.

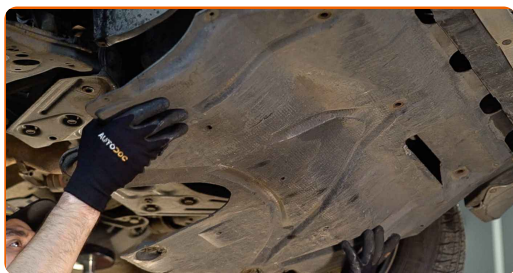
Replacement: engine mounts – SEAT Ibiza IV Sportcoupe (6J, 6P). Tip:

- The vehicle must be on even keel, and if it is at an angle, the drain plug must be at the lowest point.

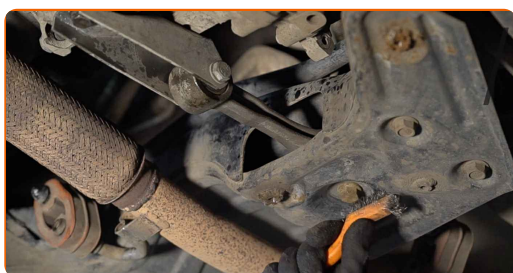
**4** Unscrew the fasteners of the lower sound insulation. Use a drive socket #12. Use a Phillips screwdriver.



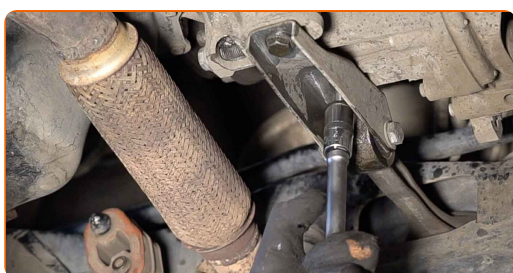
**5** Remove the lower sound insulation.



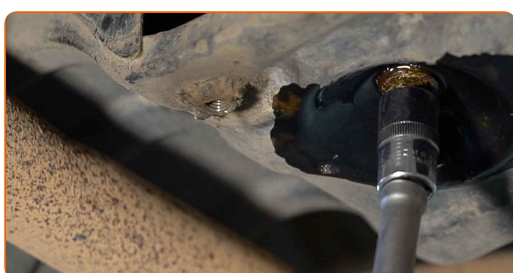
**6** Clean the engine mount fasteners. Use a wire brush. Use WD-40 spray.



**7** Unscrew the fastener connecting the engine mount to the gearbox housing. Use a drive socket #16. Use a ratchet wrench.



**8** Unscrew the engine mount fastener that connects it to the subframe. Use a drive socket #16. Use a ratchet wrench.



9

Remove the engine mount.



Replacement: engine mounts – SEAT Ibiza IV Sportcoupe (6J, 6P). AUTODOC experts recommend:

- Carefully check the other engine mounts and replace them if necessary.

10

Install the engine mount to its mounting seat.

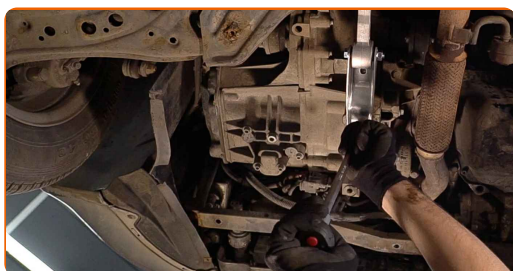


11

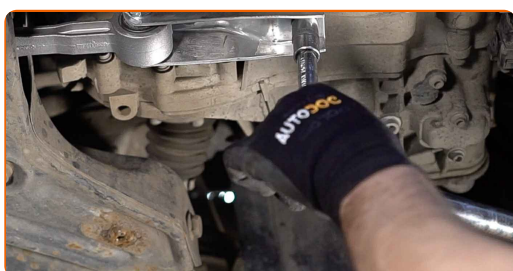
Screw in the engine mount fastener that connects it to the subframe. Use a drive socket #16.



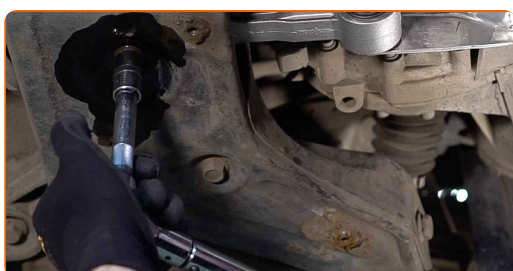
**12** Screw in the engine mount fastener that connects it to the gearbox housing. Use a drive socket #16. Use a ratchet wrench.



**13.1** Tighten the engine mount fastening bolts.



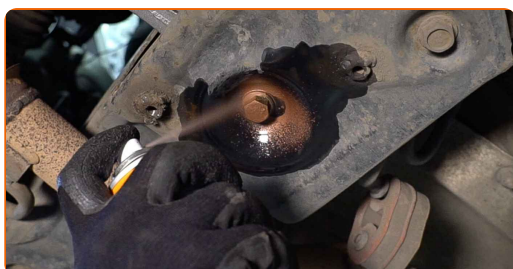
**13.2** Use a drive socket #16. Use a torque wrench. Tighten it to 40 Nm torque.+90°



**AUTODOC recommends:**

- Important! Be sure to use new fasteners.

**14** Treat the engine mount fasteners. Use copper grease.



**15** Install the lower sound insulation.



**16** Screw in the fasteners of the lower sound insulation. Use a drive socket #12. Use a Phillips screwdriver.



**17** Lower the car.

**18** Remove the fender protection cover.

**19** Close the hood.

**WELL DONE!** 

**VIEW MORE TUTORIALS**



# AUTODOC – TOP QUALITY AND AFFORDABLE CAR PARTS ONLINE

**AUTODOC MOBILE APP: GREAT DEALS AND CONVENIENT SHOPPING**



**+ AUTODOC**

GET IT ON  
**Google Play**

Download on the  
**App Store**

**Download**

**A GREAT SELECTION OF SPARE PARTS FOR YOUR CAR**

**ENGINE MOUNTS: A WIDE SELECTION**

## **DISCLAIMER:**

The document contains only general recommendations that may be useful for you when you perform repair or replacement work. AUTODOC shall not be liable for any loss, injury, damage of property occurring in the repair or replacement process due to incorrect use or misinterpretation of the provided information.

AUTODOC shall not be liable for any possible mistakes and uncertainties in this guide. The information provided is for information purposes only and cannot replace advice from specialists.

AUTODOC shall not be liable for incorrect or hazardous usage of equipment, tools and car parts. AUTODOC strongly recommends to be careful and observe the safety rules when performing repair or replacement works. Remember: usage of low quality auto parts does not guarantee you the appropriate level of road safety.

© Copyright 2023 – All the contents of this website, in particular texts, photographs and graphics, are protected by copyright. All rights, including reproduction, publication, editing and translation rights, are reserved by AUTODOC SE.