



How to change mass air  
flow sensor on **SEAT**  
**Exeo Saloon (3R2)** –  
replacement guide

## SIMILAR VIDEO TUTORIAL



This video shows the replacement procedure of a similar car part on another vehicle

### Important!

This replacement procedure can be used for:

SEAT Exeo Saloon (3R2) 1.6

The steps may slightly vary depending on the car design.

This tutorial was created based on the replacement procedure for a similar car part on: AUDI A4 Saloon (8D2, B5) 1.6

REPLACEMENT: MASS AIR FLOW SENSOR – SEAT EXEO SALOON (3R2). TOOLS YOU NEED:



- Electronic spray
- Torque wrench
- Drive socket # 7
- Drive socket # 10
- Ratchet wrench
- Phillips screwdriver
- Fender cover

**Buy tools**

Replacement: mass air flow sensor – SEAT Exeo Saloon (3R2). AUTODOC recommends:

- Clear the trouble codes from the electronic control unit if necessary.
- Make sure that no dust or dirt gets into the air duct components and the throttle body.
- Please note: all work on the car – SEAT Exeo Saloon (3R2) – should be done with the engine switched off.

## CARRY OUT REPLACEMENT IN THE FOLLOWING ORDER:

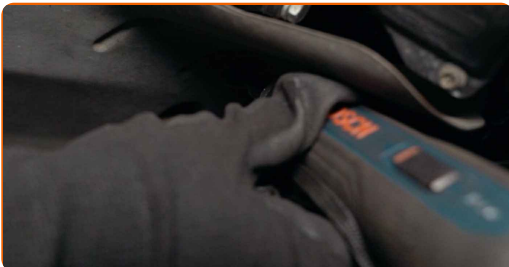
**1** Open the bonnet.

**2** Use a fender protection cover to prevent damaging paintwork and plastic parts of the car.

**3** Detach the air duct housing from the air filter housing.



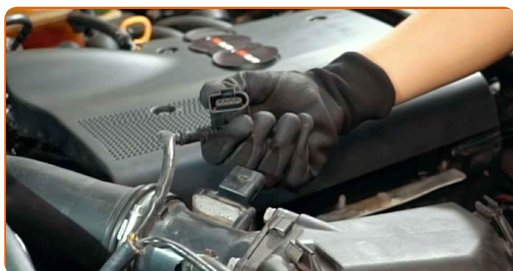
**4** Unscrew the fasteners of the heat shield of the air filter housing. Use a Phillips screwdriver.



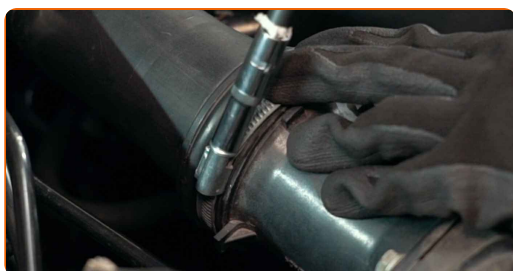
**5** Remove the heat shield of the air filter housing.



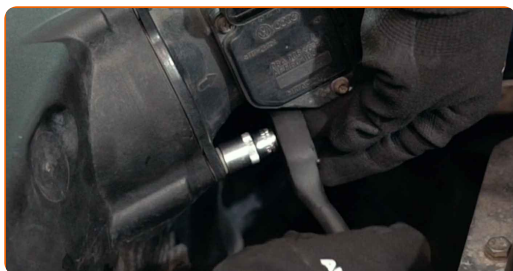
**6** Detach the mass air flow sensor connector.



**7** Loosen the fastening clamp connecting the air duct to the air filter housing. Use a drive socket #7. Use a ratchet wrench.



**8** Unscrew the MAF sensor fasteners. Use a drive socket #10. Use a ratchet wrench.



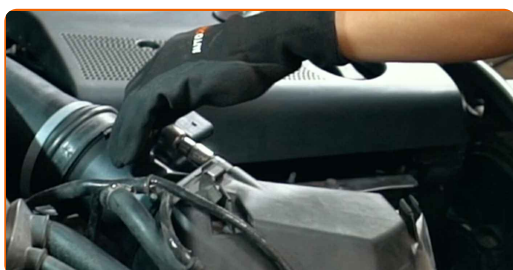
**9** Remove the mass air flow sensor.



**10** Install a new mass air flow sensor.



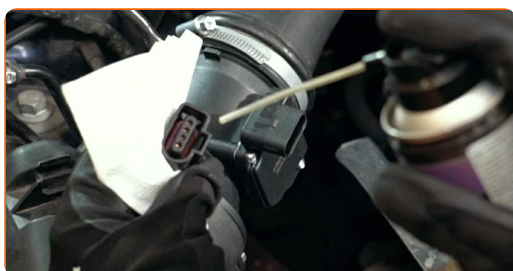
**11** Tighten the MAF sensor fasteners. Use a drive socket #10. Use a torque wrench. Tighten it to 4 Nm torque.



**12** Screw the fastening clamp connecting the air duct to the air filter housing. Use a drive socket #7. Use a ratchet wrench.



**13** Treat the mass air flow sensor connector. Use dielectric grease.



**14** Attach the mass air flow sensor connector.

**15** Install the heat shield of the air filter housing.

16

Screw in the fasteners of the heat shield of the air filter housing. Use a Phillips screwdriver.



17

Install the air duct housing.



18

Run the engine for a few minutes. This is necessary in order to make sure that the component operates properly.

19

Shut off the engine.

20

Remove the fender protection cover.

21

Close the hood.

**WELL DONE!** 

**VIEW MORE TUTORIALS**

# AUTODOC – TOP QUALITY AND AFFORDABLE CAR PARTS ONLINE

**AUTODOC MOBILE APP: GREAT DEALS AND CONVENIENT SHOPPING**



**+ AUTODOC**

GET IT ON  
**Google Play**

 Download on the  
**App Store**

**Download**

**A GREAT SELECTION OF SPARE PARTS FOR YOUR CAR**

**MASS AIR FLOW SENSOR: A WIDE SELECTION**

## **DISCLAIMER:**

The document contains only general recommendations that may be useful for you when you perform repair or replacement work. AUTODOC shall not be liable for any loss, injury, damage of property occurring in the repair or replacement process due to incorrect use or misinterpretation of the provided information.

AUTODOC shall not be liable for any possible mistakes and uncertainties in this guide. The information provided is for information purposes only and cannot replace advice from specialists.

AUTODOC shall not be liable for incorrect or hazardous usage of equipment, tools and car parts. AUTODOC strongly recommends to be careful and observe the safety rules when performing repair or replacement works. Remember: usage of low quality auto parts does not guarantee you the appropriate level of road safety.

© Copyright 2023 – All the contents of this website, in particular texts, photographs and graphics, are protected by copyright. All rights, including reproduction, publication, editing and translation rights, are reserved by AUTODOC SE.