



How to change front  
strut mount on **SEAT**  
**Córdoba II Saloon (6L2)** –  
replacement guide

### SIMILAR VIDEO TUTORIAL



This video shows the replacement procedure of a similar car part on another vehicle

#### **Important!**

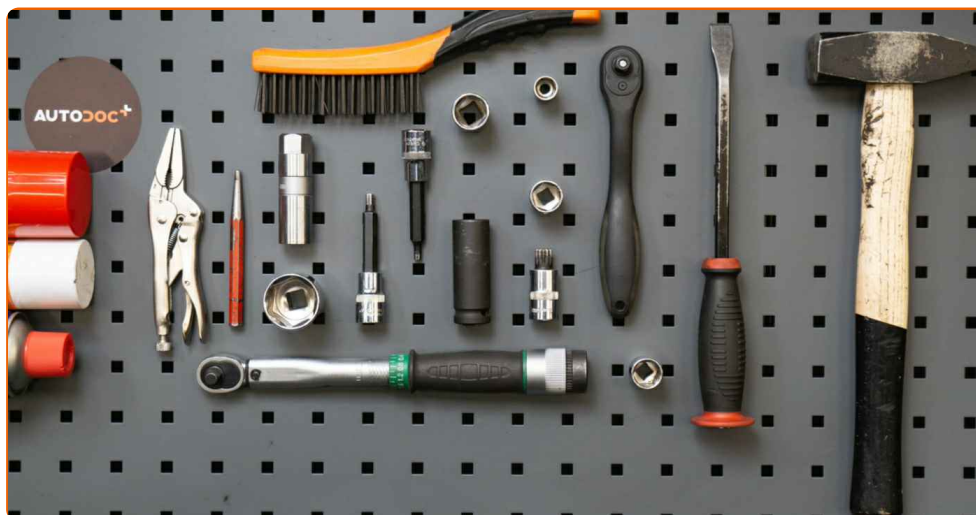
This replacement procedure can be used for:

SEAT Córdoba II Saloon (6L2) 1.2, SEAT Córdoba II Saloon (6L2) 1.4 16V, SEAT Córdoba II Saloon (6L2) 1.9 TDI, SEAT Córdoba II Saloon (6L2) 1.9 SDI, SEAT Córdoba II Saloon (6L2) 1.4 TDI, SEAT Córdoba II Saloon (6L2) 1.6, SEAT Córdoba II Saloon (6L2) 2.0

The steps may slightly vary depending on the car design.

This tutorial was created based on the replacement procedure for a similar car part on: SEAT Ibiza III Hatchback (6L) 1.4 16V

REPLACEMENT: STRUT MOUNT – SEAT CÓRDOBA II SALOON (6L2). TOOLS YOU'LL NEED:



- Wire brush
- WD-40 spray
- Brake cleaner
- Copper grease
- Torque wrench
- HEX bit No.H6.
- HEX bit No.H7.
- XZN socket bit # 14
- Drive socket # 13
- Drive socket # 17
- Drive socket # 18
- Drive socket # 21
- Drive socket # 36
- Wheel impact socket #17
- Shock absorber socket
- Ratchet wrench
- Pin punch
- Tap wrench
- Hammer
- Water pump pliers
- Crow bar
- Hydraulic strut spring compressor
- Hydraulic transmission jack
- Fender cover
- Wheel chock

**Buy tools**

Replacement: strut mount – SEAT Córdoba II Saloon (6L2). AUTODOC recommends:

- The replacement procedure is identical for the mounts of the left and right shock struts of the front suspension.
- All mounts of the front shock struts should be replaced simultaneously.
- All work should be done with the engine stopped.

**REPLACEMENT: STRUT MOUNT – SEAT CÓRDOBA II SALOON (6L2).  
RECOMMENDED SEQUENCE OF STEPS:**

**1** Open the bonnet.

**2** Use a fender protection cover to prevent damaging paintwork and plastic parts of the car.

**3** Clean the fasteners of the shock strut upper mount. Use a wire brush. Use WD-40 spray.



**4** Loosen the upper fastener of the shock strut mount. Use a drive socket #13. Use a ratchet wrench.



**5** Remove the protective cap from the shock absorber strut mount.



**6** Secure the wheels with chocks.

**7** Loosen the wheel mounting bolts. Use wheel impact socket #17.



**8** Raise the front of the car and secure on supports.

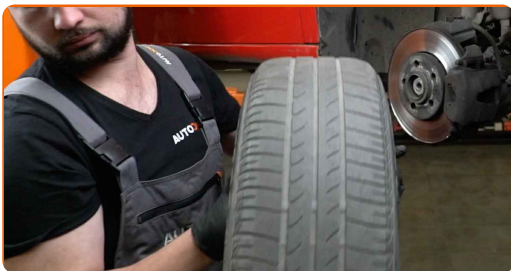
**9** Unscrew the wheel bolts.



Replacement: strut mount – SEAT Córdoba II Saloon (6L2). Professionals recommend:

- To avoid injury, hold up the wheel when unscrewing the bolts.

**10** Remove the wheel.



**11** Loosen the fastener of the driveshaft.



**12** Use a drive socket #36. Use a tap wrench.



**13** Clean the stabiliser link fasteners. Use a wire brush. Use WD-40 spray.



**14** Unscrew the fastener connecting the stabilizer link to the shock strut. Use a drive socket #17. Use a ratchet wrench.



**15** Remove the stabilizer rod.



**16** Clean the ABS wiring harness bracket. Use a wire brush. Use WD-40 spray.



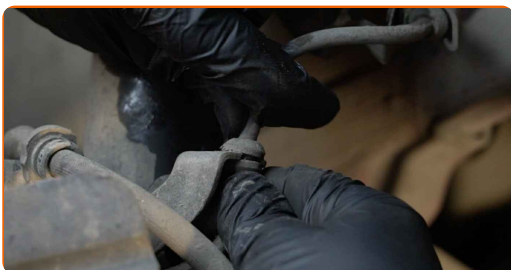
**17** Remove the brake hose retaining clip.



**18** Disconnect the brake hose. Use a crowbar.



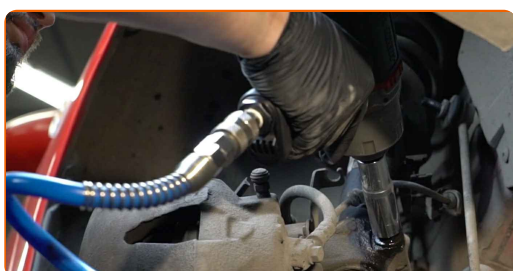
**19** Disconnect the ABS sensor wiring.



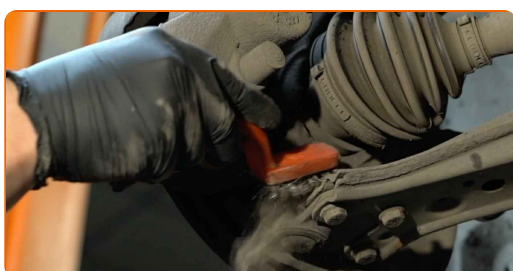
**20** Clean the fasteners connecting the shock strut to the steering knuckle. Use a wire brush. Use WD-40 spray.



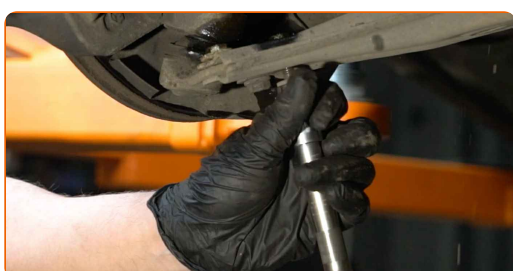
**21** Unscrew the lower fastener connecting the shock strut to the steering knuckle. Use XZN #14. Use a drive socket #18. Use a ratchet wrench. Use a tap wrench.



**22** Clean all joints of the arm. Use a wire brush. Use WD-40 spray.

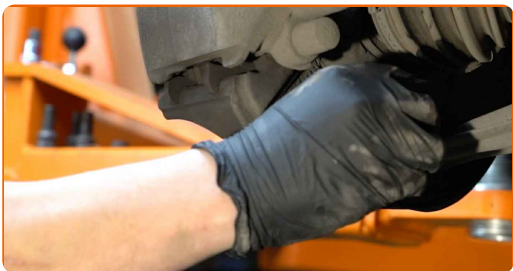


**23** Unscrew the fastener connecting the ball joint to the suspension control arm. Use a drive socket #13. Use a tap wrench.





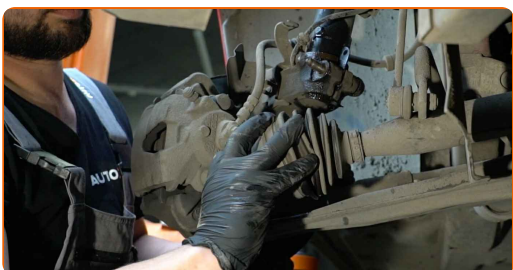
**24** Disconnect the spherical joint from the arm.



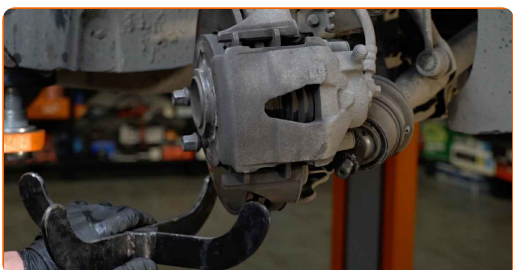
**25** Unscrew the fastener connecting the drive shaft to the wheel hub. Use a drive socket #36.



**26** Detach the driveshaft from the steering knuckle. Use a pin punch. Use a hammer.



**27** Prop up the steering knuckle. Use a hydraulic transmission jack.



**AUTODOC recommends:**

- Make sure that the steering knuckle is supported.

**28** Remove the fastening bolt.



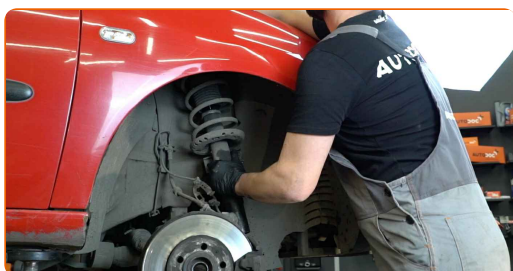
**29** Release the lower fastener connecting the shock strut to the steering knuckle. Use a special drive socket to remove the shock absorber. Use a ratchet wrench.



**30** Disconnect the steering knuckle from the shock absorber strut.



**31** Unscrew the top fastening of the shock strut mount.



**AUTODOC recommends:**

- SEAT Córdoba II Saloon (6L2) – To avoid injury, hold the suspension strut while unscrewing the fastening bolts.

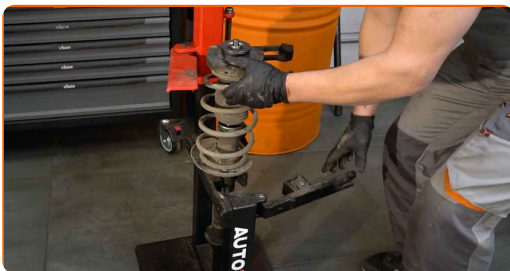
**32**

Remove the suspension strut.



**33**

Set the shock absorber strut on the spring compressor tool.

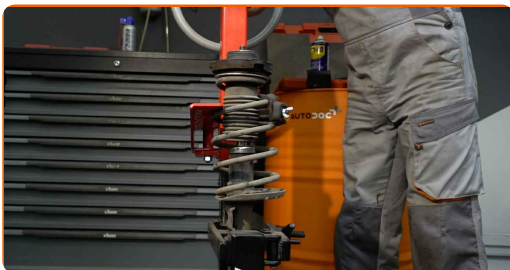


Replacement: strut mount – SEAT Córdoba II Saloon (6L2). Tip from AUTODOC experts:

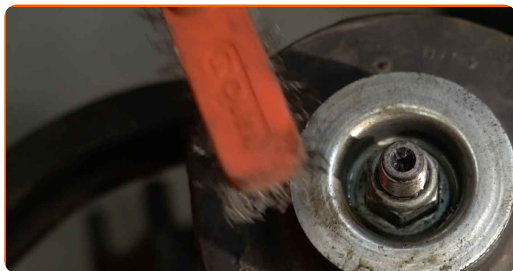
- Note that when using a spring compressor, spring coils need to be securely gripped, compressing the spring on the opposite sides.
- Ensure the correct position of the spring in the retainer.
- Make sure that the spring coils tightly entered the lock handles.

**34**

Compress the spring.



**35** Treat the shock strut rod. Use a wire brush. Use WD-40 spray.



**36** Remove the strut piston rod nut. Use HEX No.H6. Use a drive socket #21. Use a ratchet wrench.



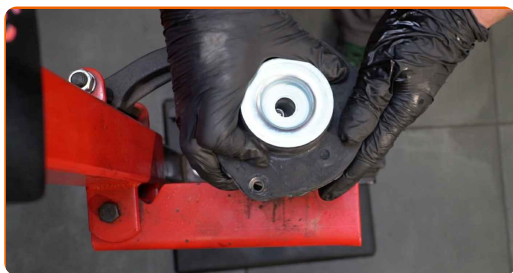
**37** Remove the shock absorber mount, boot and bump stop.



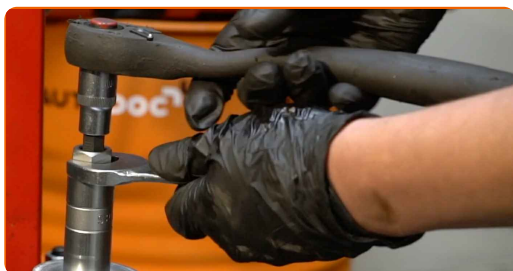
Replacement: strut mount – SEAT Córdoba II Saloon (6L2). AUTODOC recommends:

- Examine the shock absorber dust cap and the bump stop. Replace them if necessary.

**38** Install the new mount, boot, and bump stop on the shock absorber.



**39** Tighten the shock strut piston rod nut. Use HEX No.H7. Use a drive socket #21. Use a torque wrench.



**40** Tighten it to 60 Nm torque.



**AUTODOC recommends:**

- Check to make sure the spring is positioned correctly. Avoid its misalignment.

**41** Treat the shock strut rod. Use copper grease.



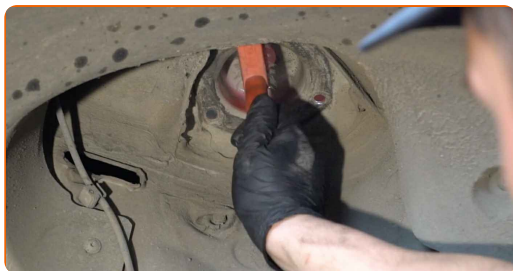
**42** Decompress the spring.



**43** Remove the assembled shock strut.



**44** Treat the mounting seats of the shock strut. Use a wire brush. Use WD-40 spray.



**45** Install the shock strut into the wheel arch.



**46** Screw the top fastening of the shock strut mount. Do not tighten it.

**AUTODOC recommends:**

- Important! Hold the suspension strut while screwing in the fastening bolts. SEAT Córdoba II Saloon (6L2)

**47**

Treat the shock strut mounting seat on the steering knuckle. Use a wire brush. Use WD-40 spray.

**48**

Fix the shock absorber strut on the steering knuckle.



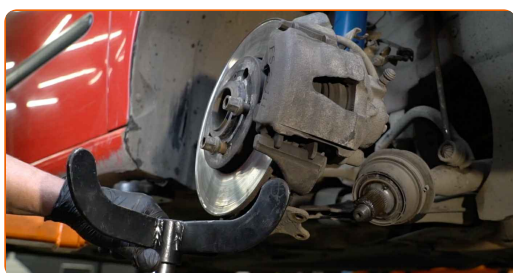
**49**

Install the fastening bolt.



**50**

Remove the support from under the steering knuckle.



**AUTODOC recommends:**

- SEAT Córdoba II Saloon (6L2) – Do not lower the transmission jack sharply to avoid damaging components and mechanisms of the car.

**51** Clean the splines of the drive shaft CV joint. Use a wire brush. Use WD-40 spray.

**52** Mount the drive shaft into the wheel hub.



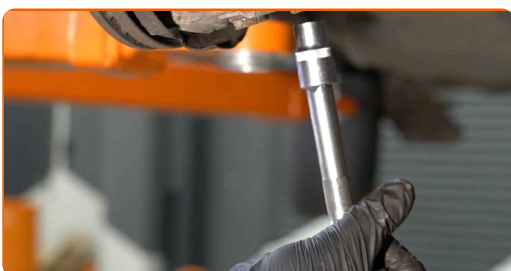
**53** Attach the ball joint to the control arm.



**54** Screw the fasteners of the ball joint. Use a drive socket #13. Use a ratchet wrench.



**55** Tighten the ball joint fastener. Use a drive socket #13. Use a torque wrench. Tighten it to 20 Nm torque.+90°





**AUTODOC recommends:**

- Important! Be sure to use new fasteners.

**56**

Screw the nut of the drive shaft. Use a drive socket #36. Use a ratchet wrench.



**57**

Tighten the drive shaft nut. Use a drive socket #36. Use a torque wrench. Tighten it to 50 Nm torque.+45°



**AUTODOC recommends:**

- Important! Be sure to use new fasteners.

**58**

Screw in the fastener that connects the shock strut to the steering knuckle. Use a drive socket #18. Use XZN #14. Use a ratchet wrench.



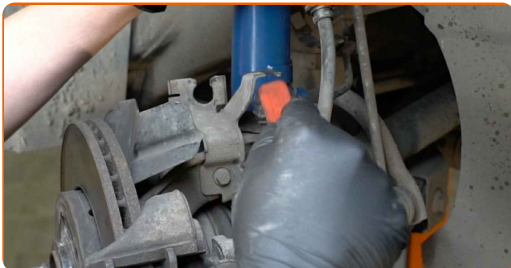
- 59** Tighten the lower fasteners connecting the shock strut to the steering knuckle. Use a drive socket #18. Use a torque wrench. Tighten it to 60 Nm torque.+90°



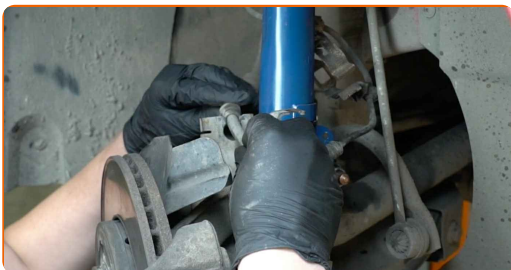
**AUTODOC recommends:**

- Important! Be sure to use new fasteners.

- 60** Clean the brake hose mounting seat. Use a wire brush. Use WD-40 spray.



- 61** Attach the brake hose.



- 62** Install the brake hose retaining clip.

**63** Connect the ABS sensor wiring. Use water pump pliers.



**64** Install the transverse stabilizer link.



**65** Tighten the fastener connecting the stabilizer link to the shock strut. Use a drive socket #17. Use a torque wrench. Tighten it to 40 Nm torque.



**66** Treat the shock strut fasteners. Treat all joints of the arm. Use copper grease.



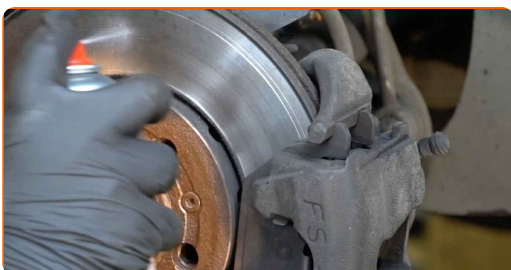
**67** Clean the wheel rim mounting seat. Use a wire brush.



**68** Treat the surface where the brake disc contacts the wheel rim. Use copper grease.



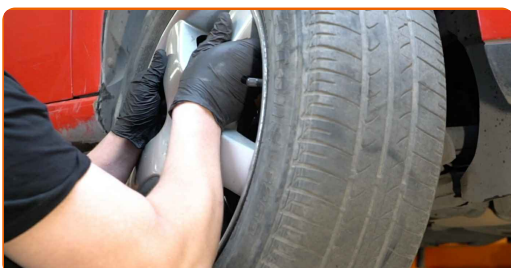
**69** Clean the brake disk surface. Use a brake cleaner.



Replacement: strut mount – SEAT Córdoba II Saloon (6L2). AUTODOC experts recommend:

- After applying the spray, wait a few minutes.

**70** Install the wheel.

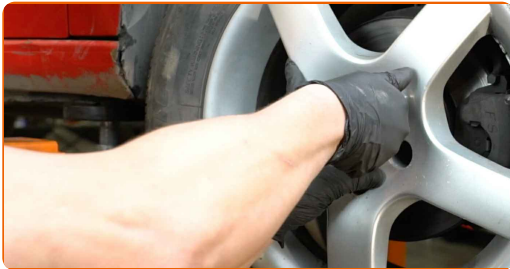


**AUTODOC recommends:**

- **Warning!** To avoid injury, hold the wheel while screwing in the fastening bolts on the car. SEAT Córdoba II Saloon (6L2)

**71**

Screw in the wheel bolts. Use wheel impact socket #17.



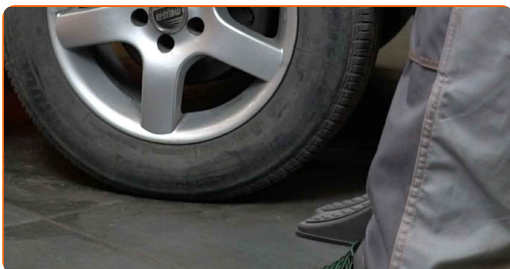
**72**

Lower the car and working in a cross order, tighten the wheel bolts. Use wheel impact socket #17. Use a torque wrench. Tighten it to 120 Nm torque.



**73**

Remove the jacks and chocks.



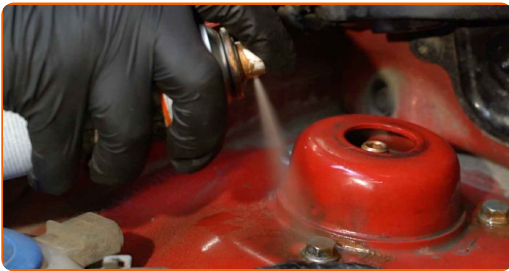
- 74** Tighten the upper fastener of the shock absorber strut mount. Use a drive socket #13. Use a torque wrench. Tighten it to 15 Nm torque.+90°



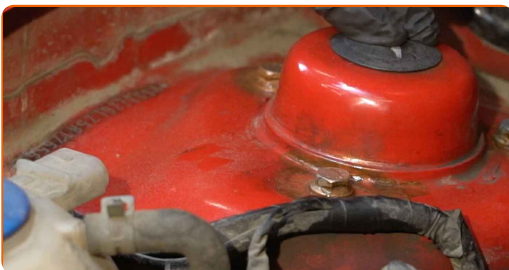
**AUTODOC recommends:**

- Important! Be sure to use new fasteners.

- 75** Treat the fasteners of the shock strut mount. Use copper grease.



- 76** Install the protective cap onto the shock absorber strut mount.



- 77** Remove the fender protection cover.

78

Close the hood.

**WELL DONE!** 

**VIEW MORE TUTORIALS**

# AUTODOC – TOP QUALITY AND AFFORDABLE CAR PARTS ONLINE

**AUTODOC MOBILE APP: GREAT DEALS AND CONVENIENT SHOPPING**



**+ AUTODOC**

GET IT ON  
**Google Play**

Download on the  
**App Store**

**Download**

**A GREAT SELECTION OF SPARE PARTS FOR YOUR CAR**

**STRUT MOUNT: A WIDE SELECTION**

## **DISCLAIMER:**

The document contains only general recommendations that may be useful for you when you perform repair or replacement work. AUTODOC shall not be liable for any loss, injury, damage of property occurring in the repair or replacement process due to incorrect use or misinterpretation of the provided information.

AUTODOC shall not be liable for any possible mistakes and uncertainties in this guide. The information provided is for information purposes only and cannot replace advice from specialists.

AUTODOC shall not be liable for incorrect or hazardous usage of equipment, tools and car parts. AUTODOC strongly recommends to be careful and observe the safety rules when performing repair or replacement works. Remember: usage of low quality auto parts does not guarantee you the appropriate level of road safety.

© Copyright 2022 – All the contents of this website, in particular texts, photographs and graphics, are protected by copyright. All rights, including reproduction, publication, editing and translation rights, are reserved by AUTODOC GmbH.