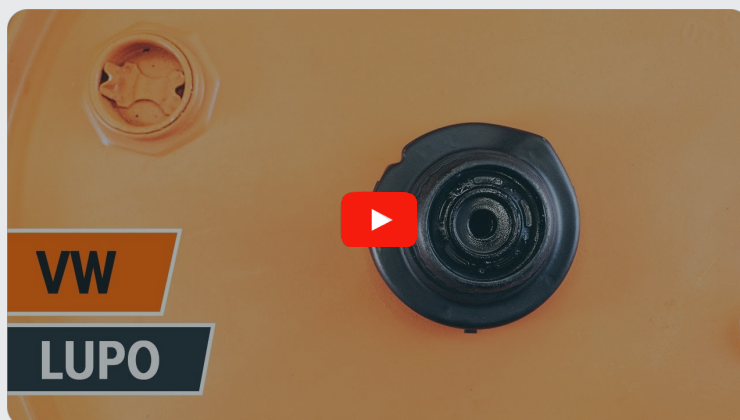




How to change front
strut mount on **SEAT**
AROSA (6H) –
replacement guide

SIMILAR VIDEO TUTORIAL



This video shows the replacement procedure of a similar car part on another vehicle

Important!

This replacement procedure can be used for:

SEAT AROSA (6H) 1.0, SEAT AROSA (6H) 1.4, SEAT AROSA (6H) 1.7 SDI, SEAT AROSA (6H) 1.4 16V, SEAT AROSA (6H) 1.4 TDI

The steps may slightly vary depending on the car design.

This tutorial was created based on the replacement procedure for a similar car part on: VW Lupo (6X1, 6E1) 1.4 TDI

**REPLACEMENT: STRUT MOUNT – SEAT AROSA (6H).
LIST OF THE TOOLS YOU'LL NEED:**



- Wire brush
- WD-40 spray
- Brake cleaner
- Copper grease
- Combination spanner #18
- Combination spanner #21
- Drive socket # 18
- Drive socket # 21
- HEX bit No.H7.
- Wheel impact socket #17
- Ratchet wrench
- Torque wrench
- Flat Screwdriver
- Hydraulic strut spring compressor
- Water pump pliers
- Fender cover
- Wheel chock

Buy tools

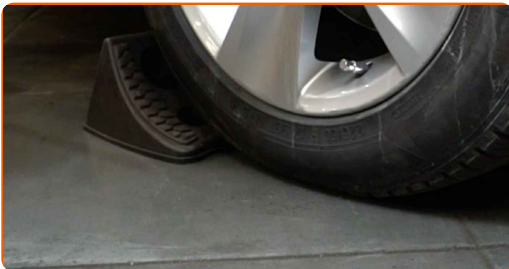
Replacement: strut mount – SEAT AROSA (6H). Tip from AUTODOC experts:

- The replacement procedure is identical for the mounts of the left and right shock struts of the front suspension.
- All mounts of the front shock struts should be replaced simultaneously.
- Please note: all work on the car – SEAT AROSA (6H) – should be done with the engine switched off.

CARRY OUT REPLACEMENT IN THE FOLLOWING ORDER:

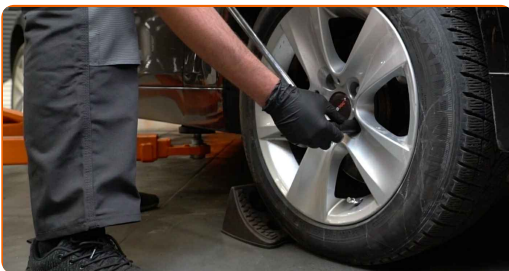
1

Secure the wheels with chocks.



2

Loosen the wheel mounting bolts. Use wheel impact socket #17.



3 Raise the front of the car and secure on supports.



4 Unscrew the wheel bolts.



Replacement: strut mount – SEAT AROSA (6H). AUTODOC recommends:

- To avoid injury, hold up the wheel when unscrewing the bolts.

5 Remove the wheel.



6 Disconnect the fastener of the ABS sensor cable from the shock absorber strut. Use a flat screwdriver.



7 Disconnect the ABS sensor wiring.

8 Clean the fasteners connecting the shock strut to the steering knuckle. Use a wire brush. Use WD-40 spray.



9 Unscrew the lower fastener connecting the shock strut to the steering knuckle. Use a combination spanner #18. Use a drive socket #18. Use a ratchet wrench.



10 Disconnect the steering knuckle from the shock absorber strut.



11 Lower the car.

12 Open the bonnet.

13 Use a fender protection cover to prevent damaging paintwork and plastic parts of the car.

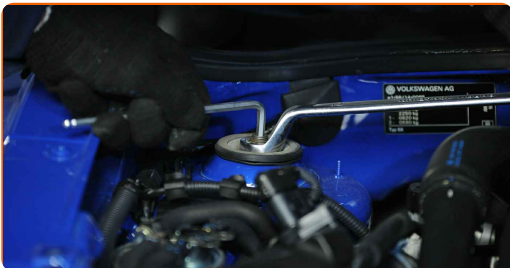
14

Remove the protective cap of the shock absorber mount.



15

Unscrew the top fastening of the shock strut mount. Use a combination spanner #21. Use HEX No.H7. Use a ratchet wrench.

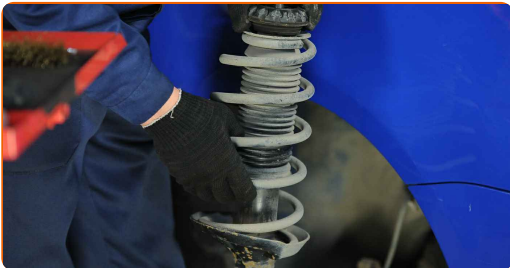


AUTODOC recommends:

- SEAT AROSA (6H) – To avoid injury, hold the suspension strut while unscrewing the fastening bolts.

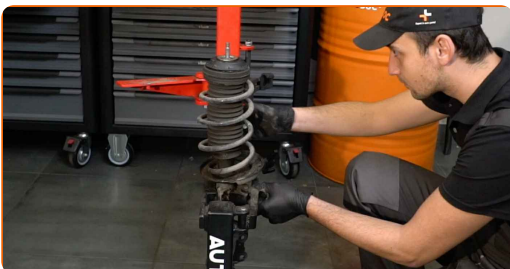
16

Remove the suspension strut.



17

Set the shock absorber strut on the spring compressor tool.

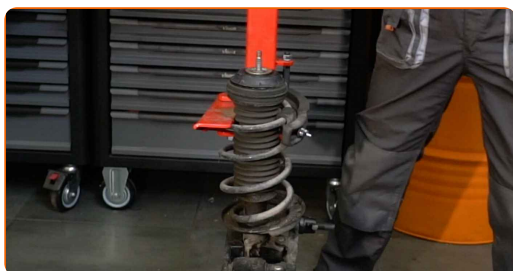


Replacement: strut mount – SEAT AROSA (6H). AUTODOC experts recommend:

- Note that when using a spring compressor, spring coils need to be securely gripped, compressing the spring on the opposite sides.
- Ensure the correct position of the spring in the retainer.
- Make sure that the spring coils tightly entered the lock handles.

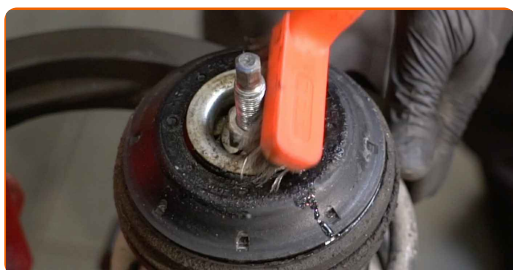
18

Compress the spring.



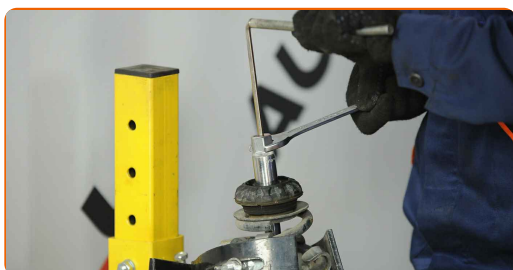
19

Treat the shock strut rod. Use a wire brush. Use WD-40 spray.



20

Remove the strut piston rod nut. Use a drive socket #21. Use HEX No.H7. Use a ratchet wrench.



21 Remove the top strut mount.



Replacement: strut mount – SEAT AROSA (6H). Professionals recommend:

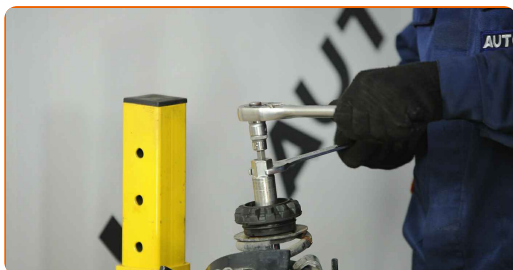
- Examine the shock absorber dust cap and the bump stop. Replace them if necessary.

22 Clean the mounting seat of the shock strut mount. Use a wire brush. Use WD-40 spray.

23 Install a new top shock strut mount.



24 Tighten the shock strut piston rod nut. Use a drive socket #21. Use HEX No.H7. Use a torque wrench. Tighten it to 60 Nm torque.

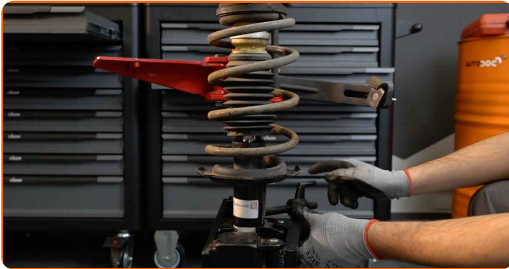


Replacement: strut mount – SEAT AROSA (6H). Tip from AUTODOC:

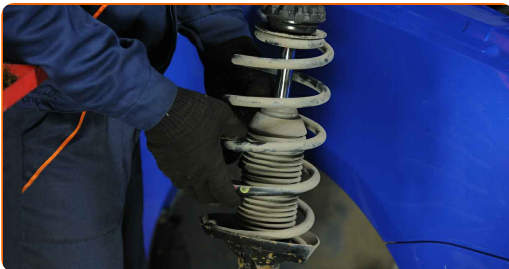
- Check to make sure the spring is positioned correctly. Avoid its misalignment.

25 Decompress the spring.

26 Remove the assembled shock strut.



27 Install the shock strut into the wheel arch.



28 Screw the top fastening of the shock strut mount.

AUTODOC recommends:

- Important! Hold the suspension strut while screwing in the fastening bolts. SEAT AROSA (6H)

- 29** Tighten the upper fastener of the shock absorber strut mount. Use a combination spanner #21. Use HEX No.H7. Use a torque wrench. Tighten it to 60 Nm torque.



- 30** Install the protective shock absorber mounting cap.

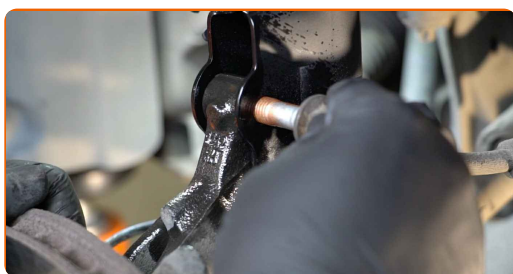


- 31** Remove the fender protection cover.

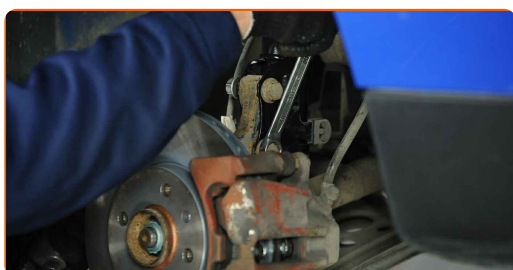
- 32** Close the hood.

- 33** Raise the front of the car and secure on supports.

- 34** Fix the shock absorber strut on the steering knuckle.



- 35** Tighten the lower fasteners connecting the shock strut to the steering knuckle. Use a combination spanner #18. Use a drive socket #18. Use a torque wrench. Tighten it to 40 Nm torque.+90°

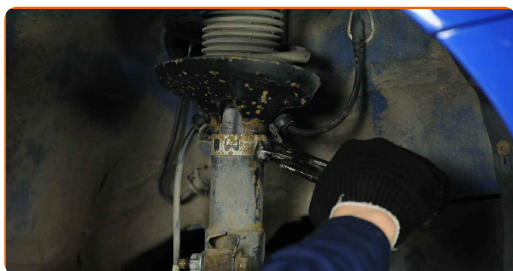


AUTODOC recommends:

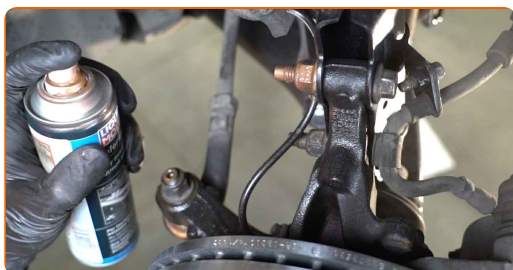
- Important! Be sure to use new fasteners.

36 Connect the ABS sensor wiring.

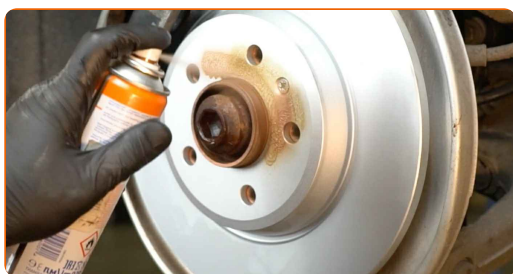
37 Connect the fastener of the ABS sensor cable to the shock absorber strut. Use water pump pliers.



38 Treat the shock strut fasteners. Use copper grease.

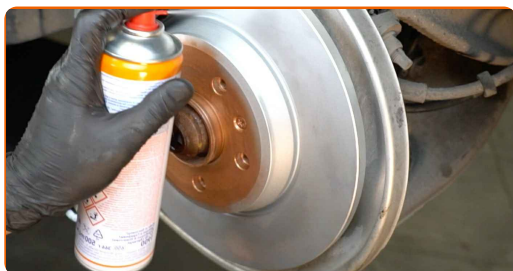


39 Treat the surface where the brake disc contacts the wheel rim. Use copper grease.



40

Clean the brake disk surface. Use a brake cleaner.



AUTODOC recommends:

- Replacement: strut mount – SEAT AROSA (6H). After applying the spray, wait a few minutes.

41

Install the wheel.



Replacement: strut mount – SEAT AROSA (6H). Tip from AUTODOC experts:

- To avoid injury, hold up the wheel when screwing in the fastening bolts.

42

Screw in the wheel bolts. Use wheel impact socket #17.

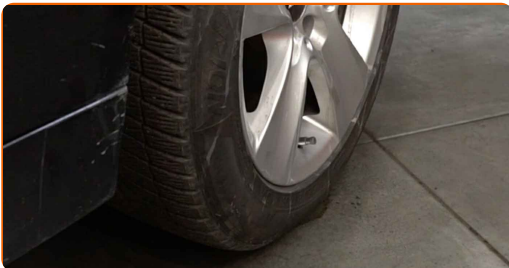


43

Lower the car and working in a cross order, tighten the wheel bolts. Use wheel impact socket #17. Use a torque wrench. Tighten it to 110 nm torque.

**44**

Remove the jacks and chocks.



WELL DONE! 

VIEW MORE TUTORIALS

AUTODOC – TOP QUALITY AND AFFORDABLE CAR PARTS ONLINE

AUTODOC MOBILE APP: GREAT DEALS AND CONVENIENT SHOPPING



+ AUTODOC

GET IT ON
 **Google Play**

 **Download on the App Store**

Download

A GREAT SELECTION OF SPARE PARTS FOR YOUR CAR

STRUT MOUNT: A WIDE SELECTION

DISCLAIMER:

The document contains only general recommendations that may be useful for you when you perform repair or replacement work. AutoDoc shall not be liable for any loss, injury, damage of property occurring in the repair or replacement process due to incorrect use or misinterpretation of the provided information.

AutoDoc shall not be liable for any possible mistakes and uncertainties in this guide. The information provided is for information purposes only and cannot replace advice from specialists.

AutoDoc shall not be liable for incorrect or hazardous usage of equipment, tools and car parts. AutoDoc strongly recommends to be careful and observe the safety rules when performing repair or replacement works. Remember: usage of low quality auto parts does not guarantee you the appropriate level of road safety.

© Copyright 2022 – All the contents of this website, in particular texts, photographs and graphics, are protected by copyright. All rights, including reproduction, publication, editing and translation rights, are reserved by Autodoc GmbH.