



How to change front ABS  
sensor on **SEAT AROSA**  
**(6H)** – replacement guide

## SIMILAR VIDEO TUTORIAL



This video shows the replacement procedure of a similar car part on another vehicle

### Important!

This replacement procedure can be used for:

SEAT AROSA (6H) 1.0, SEAT AROSA (6H) 1.4, SEAT AROSA (6H) 1.7 SDI, SEAT AROSA (6H) 1.4 16V, SEAT AROSA (6H) 1.4 TDI

The steps may slightly vary depending on the car design.

This tutorial was created based on the replacement procedure for a similar car part on: VW Golf IV Hatchback (1J1) 1.6

**REPLACEMENT: ABS SENSOR – SEAT AROSA (6H).  
TOOLS YOU MIGHT NEED:**



- Wire brush
- Nylon cleaning brush
- WD-40 spray
- Brake cleaner
- Electronic spray
- Copper grease
- Multipurpose grease
- Torque wrench
- Torx bit T30
- HEX bit No.H5
- HEX bit No.H7
- Wheel impact socket #17
- Ratchet wrench
- Flat screwdriver
- Pin punch
- Tap wrench
- Hammer
- Crow bar
- Wheel chock

**Buy tools**

Replacement: ABS sensor – SEAT AROSA (6H). Tip from AUTODOC:

- All work should be done with the engine stopped.

**REPLACEMENT: ABS SENSOR – SEAT AROSA (6H). TAKE THE FOLLOWING STEPS:**

**1** Secure the wheels with chocks.

**2** Loosen the wheel mounting bolts. Use wheel impact socket #17.



**3** Raise the front of the car and secure on supports.

**4** Unscrew the wheel bolts.



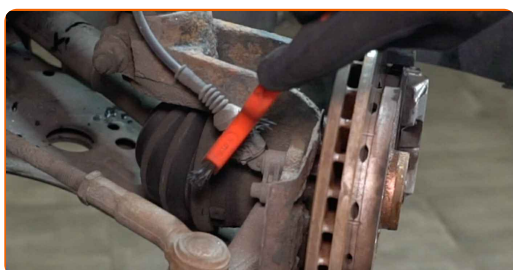
**AUTODOC recommends:**

- Warning! To avoid injury, hold the wheel while unscrewing the fastening bolts. SEAT AROSA (6H)

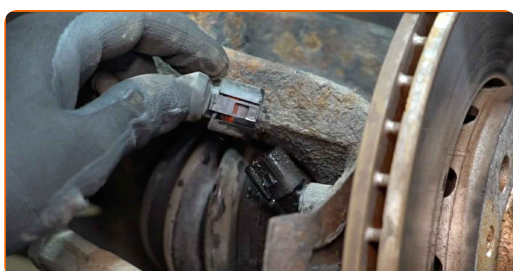
**5** Remove the wheel.



**6** Clean the ABS sensor fastener. Use a nylon cleaning brush. Use WD-40 spray.



**7** Detach the ABS sensor connector. Use a flat screwdriver.



**8** Clean the ABS sensor fastener. Use a wire brush. Use WD-40 spray.



9

Unscrew the ABS sensor fastener. Use HEX No.H5. Use a ratchet wrench.



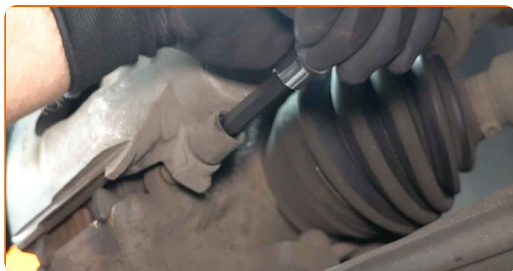
10

Remove the caps from the brake caliper guide pin boots. Use a crowbar.



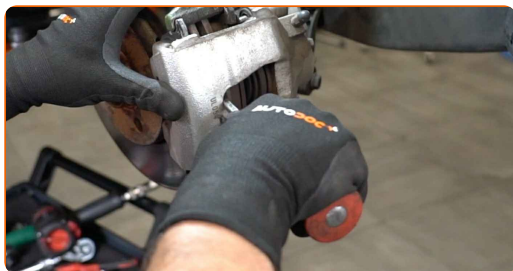
11

Unscrew the brake caliper fastening. Use HEX No.H7. Use a ratchet wrench. Use a tap wrench.



12

Spread the brake pads. Use a crowbar.



**13**

Remove the brake caliper.



**Replacement: ABS sensor – SEAT AROSA (6H). Professionals recommend:**

- Tie the caliper to the suspension or to the body with a wire without disconnecting from the brake hose to prevent depressurization of the brake system.
- Make sure that the brake caliper is not hanging on the brake hose.
- Don't press the brake pedal after the brake caliper has been removed. As a result, the piston can fall out from the brake cylinder, and brake fluid leakage and depressurization of the system may occur.
- Check the brake caliper bracket, brake caliper guide pins and boots. Clean them. Replace, if necessary.

**14**

Clean the brake disc fastener. Use a wire brush. Use WD-40 spray.





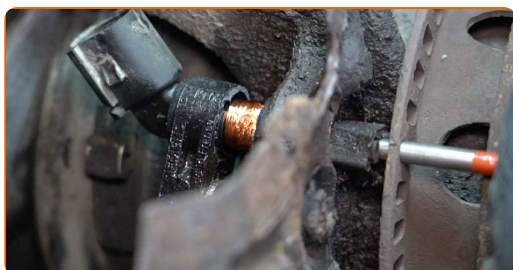
**15** Unscrew the brake disc fastening. Use Torx T30. Use a ratchet wrench.



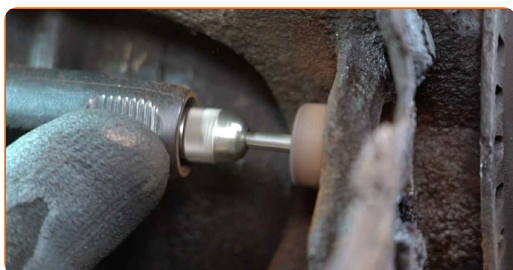
**16** Remove the brake disc.



**17** Disconnect the ABS sensor. Use a pin punch. Use a hammer. Use a crowbar.



**18** Clean the ABS sensor mounting seat. Use a wire brush. Use WD-40 spray.





**19** Treat the ABS sensor fastener. Use a multipurpose grease.



**20** Connect the ABS sensor.



**21** Tighten the fastener that connects the ABS sensor to the steering knuckle. Use HEX No.H5. Use a torque wrench. Tighten it to 6 Nm torque.



**22** Treat the ABS sensor connector. Use dielectric grease.



**23** Attach the ABS sensor connector.



24

Clean the hub. Use a wire brush. Treat the contacting surface. Use copper grease.



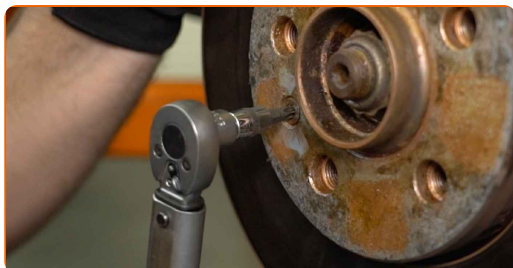
25

Install the brake disc.



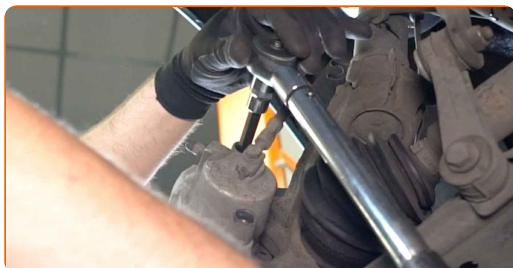
26

Tighten the brake disc fastening. Use Torx T30. Use a torque wrench. Tighten it to 6 Nm torque.

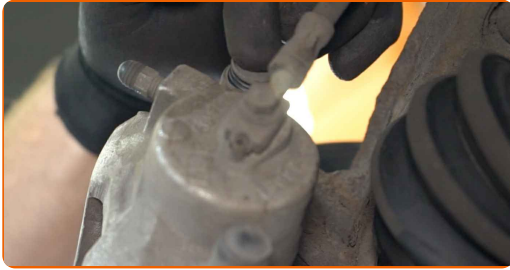


27

Install the brake caliper and fix it. Use HEX No.H7. Use a torque wrench. Tighten it to 30 Nm torque.



**28** Install the caps on the brake caliper guide pin boots.



**29** Clean the wheel rim mounting seat. Use a wire brush.



**30** Treat the surface where the brake disc contacts the wheel rim. Use copper grease.



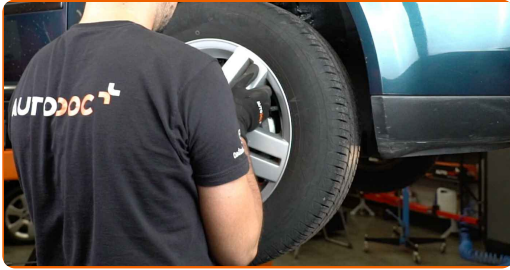
**31** Clean the brake disk surface. Use a brake cleaner.



**AUTODOC recommends:**

- Replacement: ABS sensor – SEAT AROSA (6H). After applying the spray, wait a few minutes.

**32** Install the wheel.



**AUTODOC recommends:**

- Warning! To avoid injury, hold the wheel while screwing in the fastening bolts on the car. SEAT AROSA (6H)

**33** Screw in the wheel bolts. Use wheel impact socket #17.



**34** Lower the car and working in a cross order, tighten the wheel bolts. Use wheel impact socket #17. Use a torque wrench. Tighten it to 120 nm torque.



35

Remove the jacks and chocks.



**WELL DONE!** 

**VIEW MORE TUTORIALS**

# AUTODOC – TOP QUALITY AND AFFORDABLE CAR PARTS ONLINE

**AUTODOC MOBILE APP: GREAT DEALS AND CONVENIENT SHOPPING**



**+ AUTODOC**

GET IT ON  
**Google Play**

 Download on the  
**App Store**

**Download**

**A GREAT SELECTION OF SPARE PARTS FOR YOUR CAR**

**ABS SENSOR: A WIDE SELECTION**

## **DISCLAIMER:**

The document contains only general recommendations that may be useful for you when you perform repair or replacement work. AUTODOC shall not be liable for any loss, injury, damage of property occurring in the repair or replacement process due to incorrect use or misinterpretation of the provided information.

AUTODOC shall not be liable for any possible mistakes and uncertainties in this guide. The information provided is for information purposes only and cannot replace advice from specialists.

AUTODOC shall not be liable for incorrect or hazardous usage of equipment, tools and car parts. AUTODOC strongly recommends to be careful and observe the safety rules when performing repair or replacement works. Remember: usage of low quality auto parts does not guarantee you the appropriate level of road safety.

© Copyright 2023 – All the contents of this website, in particular texts, photographs and graphics, are protected by copyright. All rights, including reproduction, publication, editing and translation rights, are reserved by AUTODOC SE.