



How to change front
wheel bearing on **SEAT**
Altea XL (5P5, 5P8) –
replacement guide

SIMILAR VIDEO TUTORIAL



This video shows the replacement procedure of a similar car part on another vehicle

Important!

This replacement procedure can be used for:

SEAT Altea XL (5P5, 5P8) 1.6, SEAT Altea XL (5P5, 5P8) 2.0 FSI, SEAT Altea XL (5P5, 5P8) 1.9 TDI, SEAT Altea XL (5P5, 5P8) 2.0 TDI 16V, SEAT Altea XL (5P5, 5P8) 2.0 TDI, SEAT Altea XL (5P5, 5P8) 1.8 TFSI, SEAT Altea XL (5P5, 5P8) 1.4 TSI, SEAT Altea XL (5P5, 5P8) 2.0 TFSI 4x4, SEAT Altea XL (5P5, 5P8) 2.0 TDI 4x4, SEAT Altea XL (5P5, 5P8) 1.4 16V, SEAT Altea XL (5P5, 5P8) 1.6 Multifuel, SEAT Altea XL (5P5, 5P8) 1.6 TDI, SEAT Altea XL (5P5, 5P8) 1.2 TSI, SEAT Altea XL (5P5, 5P8) 1.6 LPG, SEAT Altea XL (5P5, 5P8) 2.0 TFSI, (+ 2)

The steps may slightly vary depending on the car design.

This tutorial was created based on the replacement procedure for a similar car part on: SEAT Leon Hatchback (1P1) 2.0 FSI

REPLACEMENT: WHEEL BEARING – SEAT ALTEA XL (5P5, 5P8). LIST OF THE TOOLS YOU'LL NEED:



- Wire brush
- WD-40 spray
- Brake cleaner
- Ceramic grease
- Copper grease
- Torque wrench
- Drive socket # 16
- Drive socket # 21
- 12-point socket # 24
- XZN socket bit #12
- Torx bit T30
- Wheel impact socket #17
- Ratchet wrench
- Tap wrench
- Hammer
- Impact screwdriver
- Crow bar
- Hydraulic transmission jack
- Wheel chock

[Buy tools](#)

AUTODOC recommends:

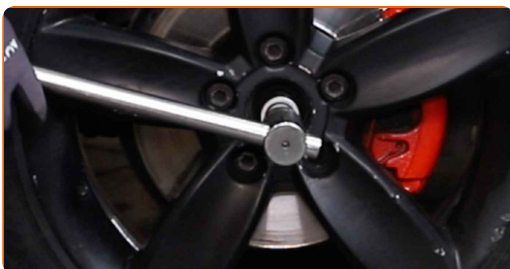
- Do not re-use the bearing assembly of your SEAT Altea XL (5P5, 5P8) car.
- The wheel hub bearing replacement procedure is identical for both wheels on the same axle.
- Please note: all work on the car – SEAT Altea XL (5P5, 5P8) – should be done with the engine switched off.

CARRY OUT REPLACEMENT IN THE FOLLOWING ORDER:

1 Open the bonnet. Unscrew the brake fluid reservoir cap.

2 Secure the wheels with chocks.

3 Loosen the fastener of the driveshaft. Use 12-point socket No.24. Use a tap wrench.



4 Loosen the wheel mounting bolts. Use wheel impact socket #17.



5

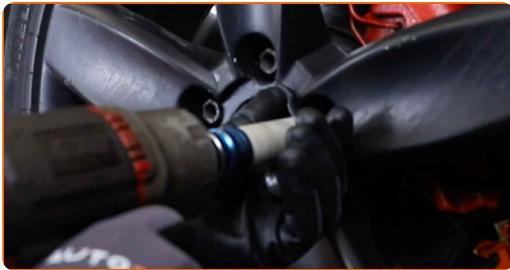
Raise the car.

Replacement: wheel bearing – SEAT Altea XL (5P5, 5P8). Professionals recommend:

- If you are using a jack, make sure it rests on a flat surface without any unevenness.
- Be sure to additionally secure the car with jack stands.

6

Unscrew the wheel bolts.



AUTODOC recommends:

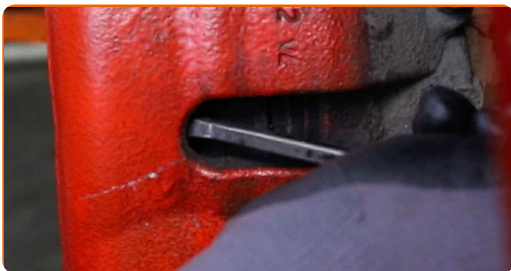
- Warning! To avoid injury, hold the wheel while unscrewing the fastening bolts.
SEAT Altea XL (5P5, 5P8)

7

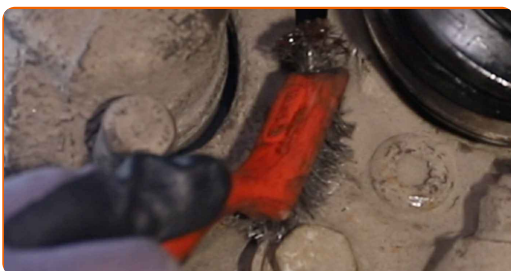
Remove the wheel.



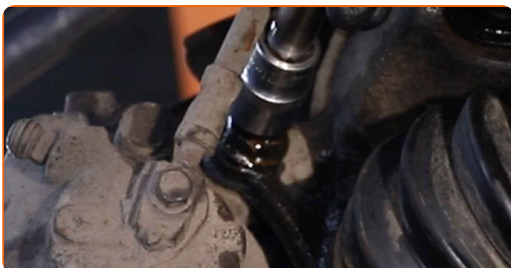
8 Spread the brake pads. Use a crowbar.



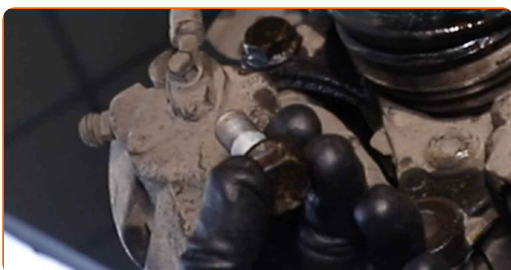
9 Clean the brake caliper bracket fasteners. Use a wire brush. Use WD-40 spray.



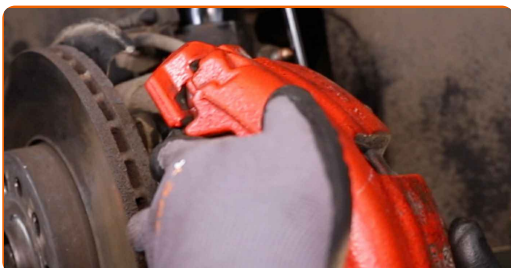
10 Unscrew the brake caliper bracket fasteners. Use a drive socket #21. Use a ratchet wrench.



11 Remove the fastening bolts.



12 Remove the brake caliper together with its bracket.

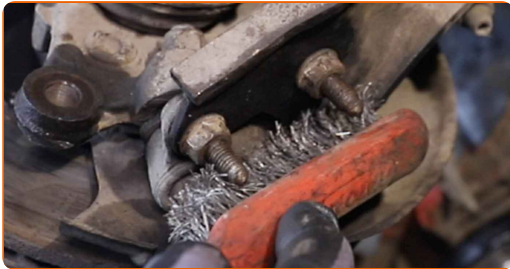


Replacement: wheel bearing – SEAT Altea XL (5P5, 5P8). Tip:

- Tie the caliper to the suspension or to the body with a wire without disconnecting from the brake hose to prevent depressurization of the brake system.
- Make sure that the brake caliper is not hanging on the brake hose.
- Don't press the brake pedal after the brake caliper has been removed. As a result, the piston can fall out from the brake cylinder, and brake fluid leakage and depressurization of the system may occur.
- Check the brake caliper bracket, brake caliper guide pins and boots. Clean them. Replace, if necessary.

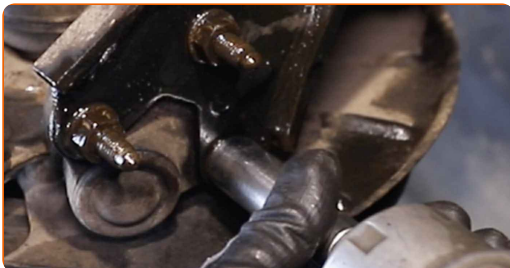
13

Clean the fasteners connecting the ball joint to the suspension control arm. Use a wire brush. Use WD-40 spray.



14

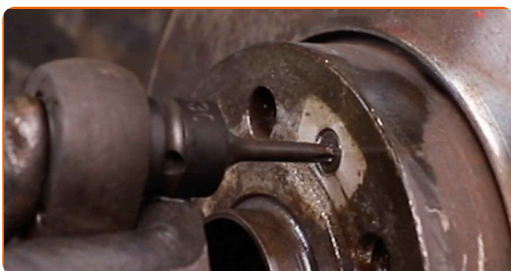
Unscrew the fasteners connecting the ball joint to the control arm. Use a drive socket #16. Use a ratchet wrench.



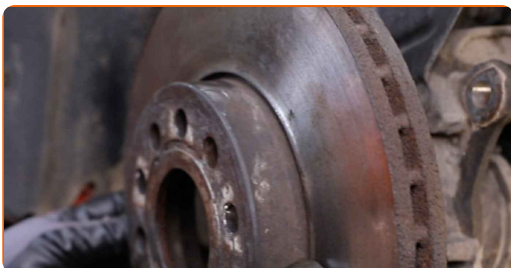
- 15 Clean the brake disc fastener. Use a wire brush. Use WD-40 spray.



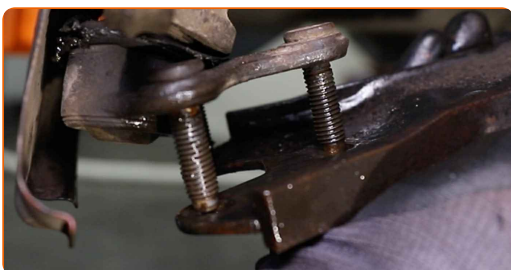
- 16 Unscrew the brake disc fastening. Use Torx T30. Use an impact screwdriver.



- 17 Remove the brake disc.



- 18 Disconnect the ball joint from the control arm.

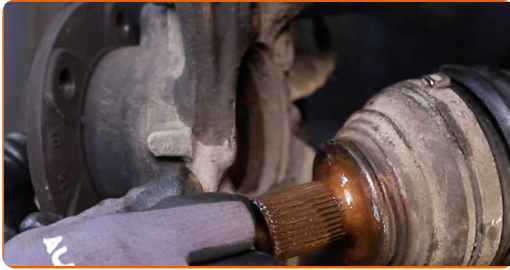


- 19 Unscrew the fastener connecting the drive shaft to the wheel hub.

- 20 Remove the fastening bolt.

21

Detach the driveshaft from the steering knuckle.



Replacement: wheel bearing – SEAT Altea XL (5P5, 5P8). AUTODOC experts recommend:

- Make sure that the drive shaft is not unloaded (when the car is jacked).

22

Prop up the steering knuckle. Use a hydraulic transmission jack.



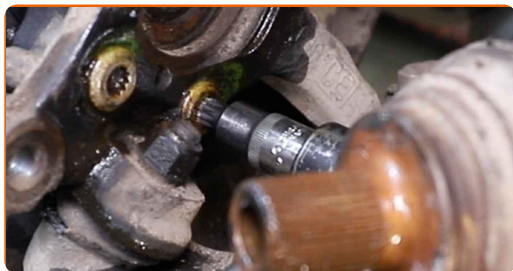
23

Clean the wheel hub fastener. Use a wire brush. Use WD-40 spray.



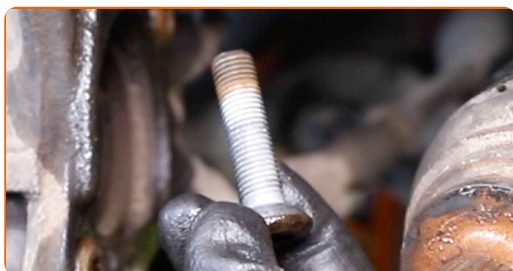
24

Unscrew the wheel hub bolts. Use XZN #12. Use a tap wrench.



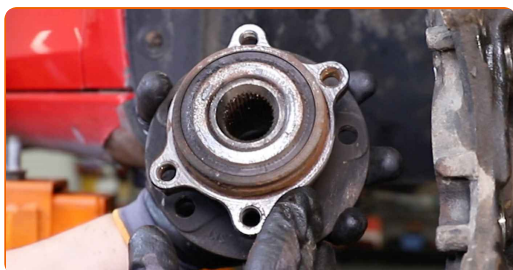
25

Remove the fastening bolts.



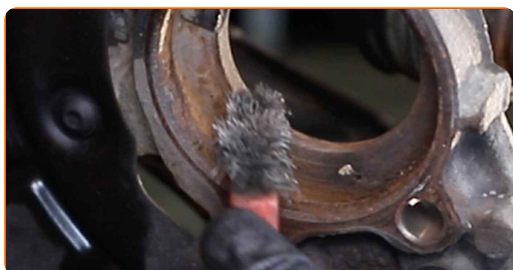
26

Remove the hub and the bearing together, since they are made as an assembly. Use a hammer.



27

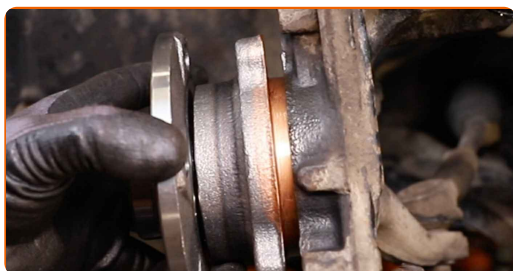
Clean the hub bearing mounting seat. Use a wire brush. Use WD-40 spray.



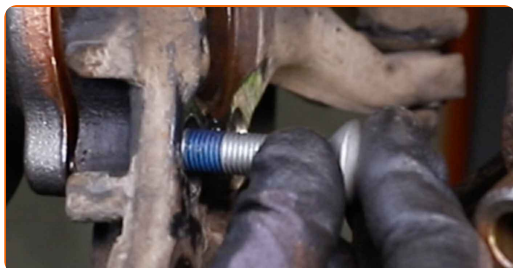
- 28 Treat the wheel hub mounting seat. Use copper grease.



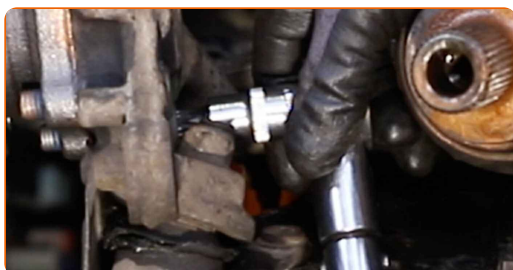
- 29 Install the new wheel hub together with the bearing.



- 30 Install the fastening bolts.



- 31 Tighten the wheel hub bolts. Use XZN #12. Use a torque wrench. Tighten it to 70 Nm torque.



- 32 Clean the splines of the drive shaft CV joint. Use a wire brush. Use WD-40 spray.



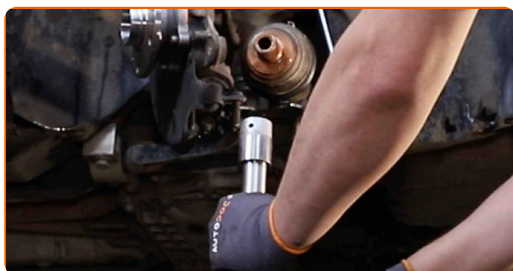
33

Treat the splines of the driveshaft CV joint. Use copper grease.



34

Remove the support from under the steering knuckle.

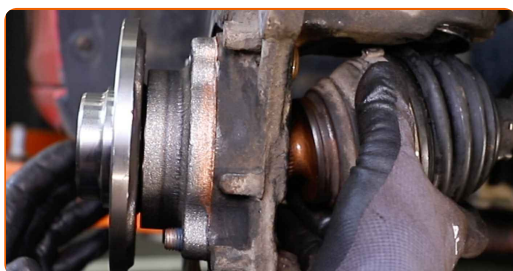


AUTODOC recommends:

- Replacement: wheel bearing – SEAT Altea XL (5P5, 5P8). Lower the transmission jack smoothly, without jerks, to avoid damaging components and mechanisms.

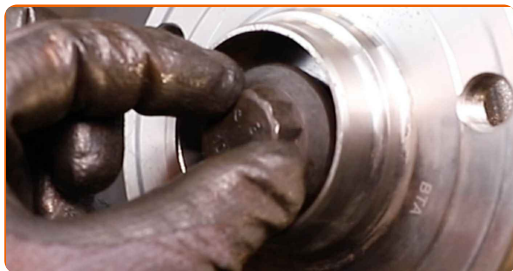
35

Install the drive shaft.



36

Install and tighten the drive shaft bolt. Use 12-point socket No.24. Use a ratchet wrench.



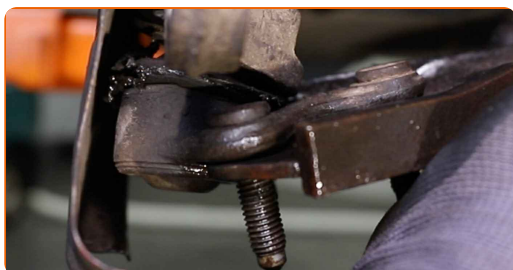
37

Clean the ball joint mounting seat. Use a wire brush. Use WD-40 spray.



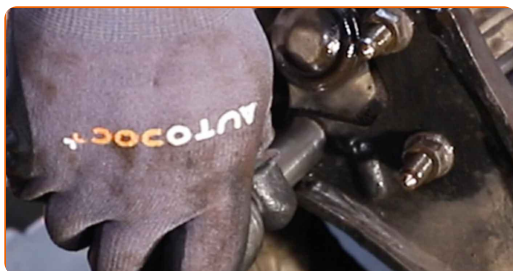
38

Attach the ball joint to the control arm.



39

Tighten the fasteners connecting the ball joint to the control arm. Use a drive socket #16. Use a torque wrench. Tighten it to 60 Nm torque.



40

Treat the fasteners of the ball joint. Use copper grease.



41

Treat the surface where the brake disc contacts the wheel rim. Use ceramic grease.



42

Install the brake disc.



43

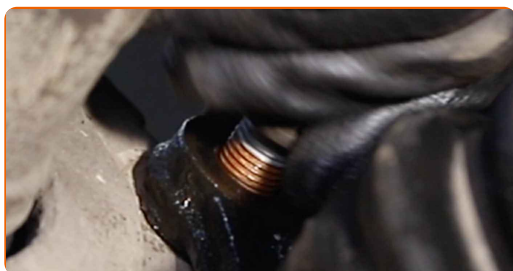
Tighten the brake disc fastening. Use Torx T30. Use a torque wrench. Tighten it to 4 Nm torque.



- 44** Install the brake caliper together with its bracket.



- 45** Install the fastening bolts.



- 46** Tighten the brake caliper bracket fasteners. Use a drive socket #21. Use a torque wrench. Tighten it to 190 Nm torque.



- 47** Treat the surface where the brake disc contacts the wheel rim. Use ceramic grease.



- 48** Clean the brake disk surface. Use a brake cleaner.



AUTODOC recommends:

- After applying the spray, wait a few minutes.

49

Install the wheel.



AUTODOC recommends:

- Warning! To avoid injury, hold the wheel while screwing in the fastening bolts on the car. SEAT Altea XL (5P5, 5P8)

50

Screw in the wheel bolts. Use wheel impact socket #17.

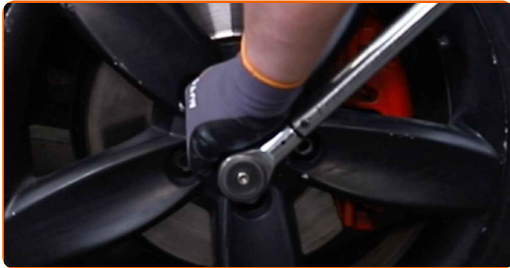


51

Lower the car.



- 52** Tighten the bolt connecting the drive shaft to the wheel hub. Use 12-point socket No.24. Use a torque wrench. Tighten it to 70 Nm torque.+90°



- 53** Tighten the wheel bolts using a criss-cross pattern. Use wheel impact socket #17. Use a torque wrench. Tighten it to 120 Nm torque.



- 54** Remove the jacks and chocks.



Replacement: wheel bearing – SEAT Altea XL (5P5, 5P8). Tip from AUTODOC:

- Without starting the engine, press the brake pedal several times until you feel significant resistance.
- Check the brake fluid level in the expansion tank and refill if necessary.

55

Tighten the brake fluid reservoir cap. Close the hood.

WELL DONE! 

VIEW MORE TUTORIALS

AUTODOC – TOP QUALITY AND AFFORDABLE CAR PARTS ONLINE

AUTODOC MOBILE APP: GREAT DEALS AND CONVENIENT SHOPPING



+ AUTODOC

GET IT ON
Google Play

Download on the
App Store

Download

A GREAT SELECTION OF SPARE PARTS FOR YOUR CAR

WHEEL BEARING: A WIDE SELECTION

DISCLAIMER:

The document contains only general recommendations that may be useful for you when you perform repair or replacement work. AUTODOC shall not be liable for any loss, injury, damage of property occurring in the repair or replacement process due to incorrect use or misinterpretation of the provided information.

AUTODOC shall not be liable for any possible mistakes and uncertainties in this guide. The information provided is for information purposes only and cannot replace advice from specialists.

AUTODOC shall not be liable for incorrect or hazardous usage of equipment, tools and car parts. AUTODOC strongly recommends to be careful and observe the safety rules when performing repair or replacement works. Remember: usage of low quality auto parts does not guarantee you the appropriate level of road safety.

© Copyright 2023 – All the contents of this website, in particular texts, photographs and graphics, are protected by copyright. All rights, including reproduction, publication, editing and translation rights, are reserved by AUTODOC SE.