



How to change fuel filter
on **SEAT Altea (5P1)** –
replacement guide

SIMILAR VIDEO TUTORIAL



This video shows the replacement procedure of a similar car part on another vehicle

Important!

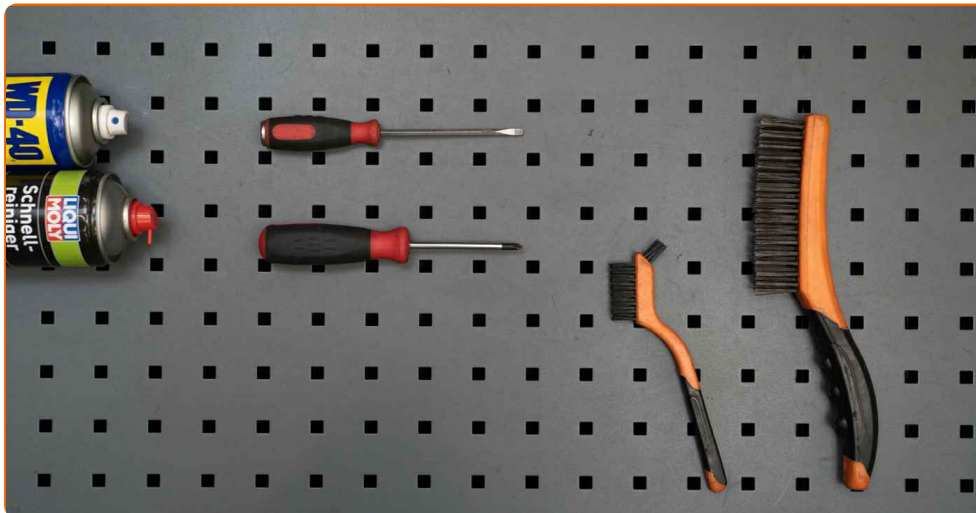
This replacement procedure can be used for:

SEAT Altea (5P1) 2.0 FSI, SEAT Altea (5P1) 2.0 TFSI, SEAT Altea (5P1) 1.8 TFSI, SEAT Altea (5P1) 1.4 TSI

The steps may slightly vary depending on the car design.

This tutorial was created based on the replacement procedure for a similar car part on: SEAT Leon Hatchback (1P1) 2.0 FSI

REPLACEMENT: FUEL FILTER – SEAT ALTEA (5P1).
TOOLS YOU NEED:



- Wire brush
- WD-40 spray
- Nylon cleaning brush
- All-purpose cleaning spray
- Flat Screwdriver
- Phillips screwdriver
- Fluid container

Buy tools

Replacement: fuel filter – SEAT Altea (5P1). AUTODOC experts recommend:

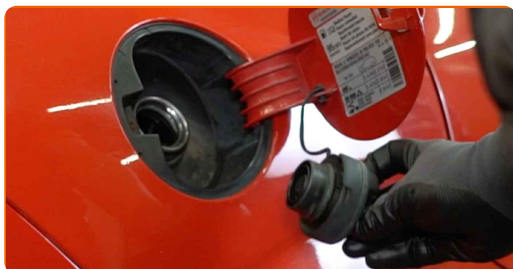
- Ensure adequate ventilation of the workplace. Fuel vapors are poisonous.
- Please note: all work on the car – SEAT Altea (5P1) – should be done with the engine switched off.

CARRY OUT REPLACEMENT IN THE FOLLOWING ORDER:

1 Open the fuel door.



2 Unscrew the fuel filler cap.

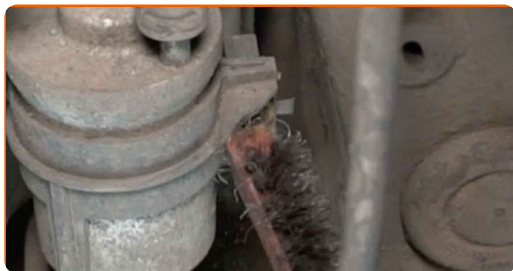


3 Lift the car using a jack or place it over an inspection pit.

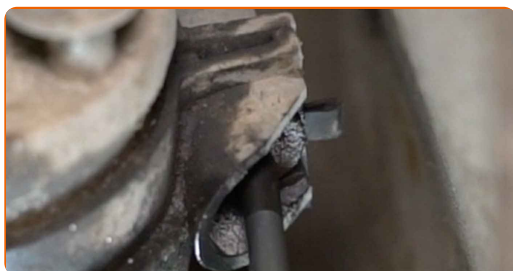
4 Prepare a container for fluids.



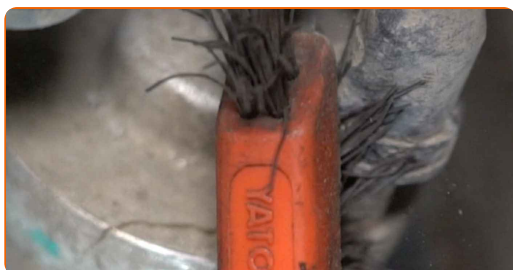
5 Clean the fuel filter mounting bracket. Use a wire brush. Use WD-40 spray.



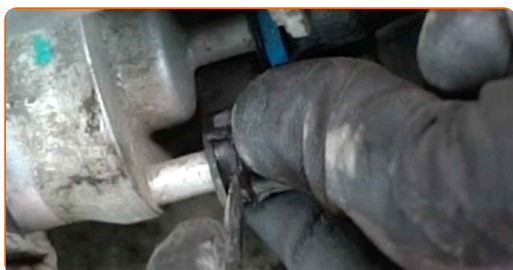
6 Loosen the fuel filter fasteners. Use a Phillips screwdriver.



7 Clean the fasteners of the fuel supply lines. Use a nylon cleaning brush. Use all-purpose cleaning spray.



8 Squeeze the clips and detach the fuel supply lines from the fuel filter housing. Use a flat screwdriver.

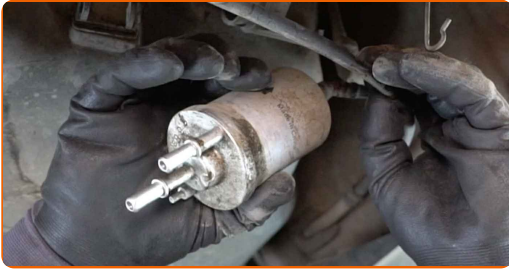


AUTODOC recommends:

- Be careful! Fuel may leak from the filter housing and hoses.

9

Remove the fuel filter.



10

Clean the fuel lines. Use all-purpose cleaning spray.



11

Install a new fuel filter.



Replacement: fuel filter – SEAT Altea (5P1). Tip:

- Remember, it is important not to mix up the input and output of the filter. Arrows on the filter indicate the direction of fuel flow.
- During installation, take care to prevent dust and dirt from getting into the fuel filter housing.
- Attention! Use quality filters – SEAT Altea (5P1).

12 Connect the fuel supply lines to the fuel filter.



13 Screw in the fuel filter mounting bracket. Use a Phillips screwdriver.



14 Take the fluid container away from under the fuel filter.



15 Lower the car.

16 Tighten the fuel filler cap.



17 Close the fuel door.



AUTODOC recommends:

- Before starting off, switch the ignition on and off several times. This should be done to activate the fuel pump to make it pump fuel through the fuel system.

18 Run the engine for a few minutes. This is necessary in order to make sure that the component operates properly.

19 Shut off the engine.

Replacement: fuel filter – SEAT Altea (5P1). Tip from AUTODOC:

- To protect the environment from pollution, be sure to dispose of the used filters at special collection points.

WELL DONE! 

[VIEW MORE TUTORIALS](#)

AUTODOC – TOP QUALITY AND AFFORDABLE CAR PARTS ONLINE

AUTODOC MOBILE APP: GREAT DEALS AND CONVENIENT SHOPPING



+ AUTODOC

GET IT ON
 **Google Play**

Download on the
 **App Store**

Download

A GREAT SELECTION OF SPARE PARTS FOR YOUR CAR

FUEL FILTER: A WIDE SELECTION

DISCLAIMER:

The document contains only general recommendations that may be useful for you when you perform repair or replacement work. AUTODOC shall not be liable for any loss, injury, damage of property occurring in the repair or replacement process due to incorrect use or misinterpretation of the provided information.

AUTODOC shall not be liable for any possible mistakes and uncertainties in this guide. The information provided is for information purposes only and cannot replace advice from specialists.

AUTODOC shall not be liable for incorrect or hazardous usage of equipment, tools and car parts. AUTODOC strongly recommends to be careful and observe the safety rules when performing repair or replacement works. Remember: usage of low quality auto parts does not guarantee you the appropriate level of road safety.

© Copyright 2023 – All the contents of this website, in particular texts, photographs and graphics, are protected by copyright. All rights, including reproduction, publication, editing and translation rights, are reserved by AUTODOC SE.