



How to change fog lights  
on **SEAT Altea (5P1)** –  
replacement guide

## SIMILAR VIDEO TUTORIAL



This video shows the replacement procedure of a similar car part on another vehicle

### **Important!**

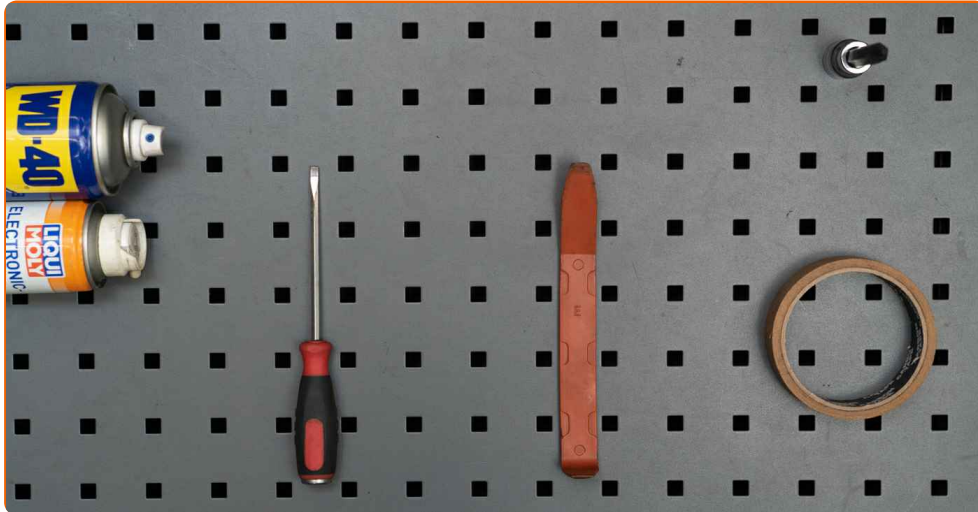
This replacement procedure can be used for:

SEAT Altea (5P1) 1.6, SEAT Altea (5P1) 2.0 FSI, SEAT Altea (5P1) 1.9 TDI, SEAT Altea (5P1) 2.0 TDI 16V, SEAT Altea (5P1) 2.0 TDI, SEAT Altea (5P1) 2.0 TFSI, SEAT Altea (5P1) 1.8 TFSI, SEAT Altea (5P1) 1.4 TSI, SEAT Altea (5P1) 1.4 16V, SEAT Altea (5P1) 1.6 TDI, SEAT Altea (5P1) 1.2 TSI, SEAT Altea (5P1) 1.6 LPG, SEAT Altea (5P1) 2.0 TDI 16V 4WD

The steps may slightly vary depending on the car design.

This tutorial was created based on the replacement procedure for a similar car part on: SEAT Leon II Hatchback (1P1) 2.0 FSI

REPLACEMENT: FOG LIGHTS – SEAT ALTEA (5P1).  
TOOLS YOU NEED:



- WD-40 spray
- Electronic spray
- Torx bit T20
- Phillips screwdriver
- Plastic trim tool
- Painter's tape

[Buy tools](#)

Replacement: fog lights – SEAT Altea (5P1). AUTODOC experts recommend:

- The procedure for replacing the right and left fog lights is identical.
- Please note: all work on the car – SEAT Altea (5P1) – should be done with the engine switched off.

## CARRY OUT REPLACEMENT IN THE FOLLOWING ORDER:

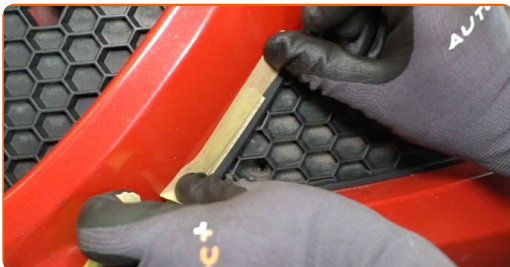
1

Unscrew the fog light grille fastener. Use a Phillips screwdriver.



2

Use the masking tape to prevent plastic and painted parts of the car from being damaged.



3

Remove the fog light grille. Use a plastic trim tool.



4 Treat the fog light fasteners. Use WD-40 spray.



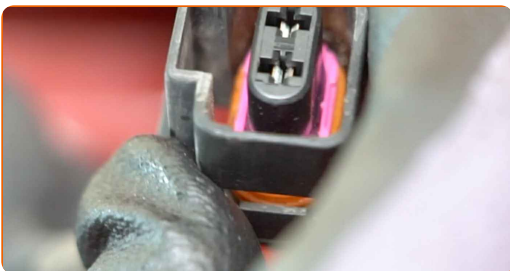
5 Unscrew the fog light fasteners. Use Torx T20.



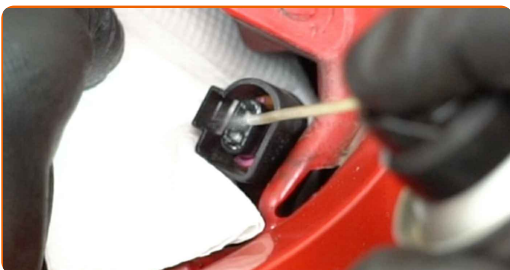
6 Remove the fog light.



7 Detach the fog light connector.



8 Treat the fog light connector. Use dielectric grease.



9 Attach the fog light connector.



10 Install the fog light.



11 Screw in the fog light fasteners. Use Torx T20.



12 Remove the masking tape.

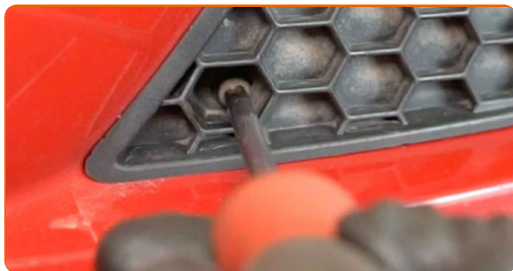


13 Install the fog light grille.



14

Screw in the fog light grille fastener. Use a Phillips screwdriver.



**WELL DONE!** 👍

[VIEW MORE TUTORIALS](#)



## AUTODOC – TOP QUALITY AND AFFORDABLE CAR PARTS ONLINE

**AUTODOC MOBILE APP: GREAT DEALS AND CONVENIENT SHOPPING**

**AUTODOC**

GET IT ON  
**Google Play**

Download on the  
**App Store**

**Download**

**A GREAT SELECTION OF SPARE PARTS FOR YOUR CAR**

**FOG LIGHTS: A WIDE SELECTION**

### **(i) DISCLAIMER:**

The document contains only general recommendations that may be useful for you when you perform repair or replacement work. AUTODOC shall not be liable for any loss, injury, damage of property occurring in the repair or replacement process due to incorrect use or misinterpretation of the provided information.

AUTODOC shall not be liable for any possible mistakes and uncertainties in this guide. The information provided is for information purposes only and cannot replace advice from specialists.

AUTODOC shall not be liable for incorrect or hazardous usage of equipment, tools and car parts. AUTODOC strongly recommends to be careful and observe the safety rules when performing repair or replacement works. Remember: usage of low quality auto parts does not guarantee you the appropriate level of road safety.

© Copyright 2022 – All the contents of this website, in particular texts, photographs and graphics, are protected by copyright. All rights, including reproduction, publication, editing and translation rights, are reserved by AUTODOC GmbH.