



How to change glow
plugs on **SEAT Alhambra**
(7V8, 7V9) – replacement
guide

SIMILAR VIDEO TUTORIAL



This video shows the replacement procedure of a similar car part on another vehicle

Important!

This replacement procedure can be used for:

SEAT Alhambra (7V8, 7V9) 1.9 TDI, SEAT Alhambra (7V8, 7V9) 1.9 TDI 4motion

The steps may slightly vary depending on the car design.

This tutorial was created based on the replacement procedure for a similar car part on: VW Caddy III Van (2KA, 2KH, 2CA, 2CH) 2.0 SDI

REPLACEMENT: GLOW PLUGS – SEAT ALHAMBRA (7V8, 7V9). TOOLS YOU MIGHT NEED:



- WD-40 spray
- Electronic spray
- High-temperature ceramic grease
- Torque wrench
- Spark plug socket # 10
- Fender cover

Buy tools

Replacement: glow plugs – SEAT Alhambra (7V8, 7V9). AUTODOC experts recommend:

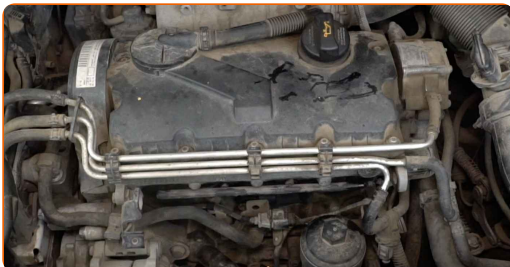
- The replacement procedure is identical for all glow plugs.
- Wear gloves to protect your hands from hot surfaces.
- Please note: all work on the car – SEAT Alhambra (7V8, 7V9) – should be done with the engine switched off.

CARRY OUT REPLACEMENT IN THE FOLLOWING ORDER:

1 Open the bonnet.

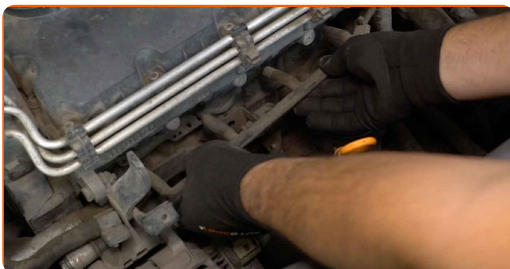
2 Use a fender protection cover to prevent damaging paintwork and plastic parts of the car.

3 Before getting down to work, start the engine and let it warm up to operating temperature.



4 Shut off the engine.

5 Detach the glow plug wiring connectors.



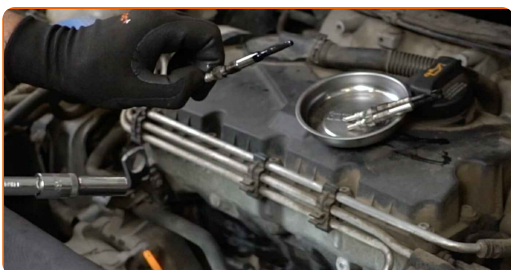
6 Treat the glow plugs. Use WD-40 spray.



7 Unscrew the glow plugs. Use the spark plug socket #10. Use a torque wrench.



8 Remove the glow plugs.



9 Treat the glow plugs. Use high-temperature ceramic grease.

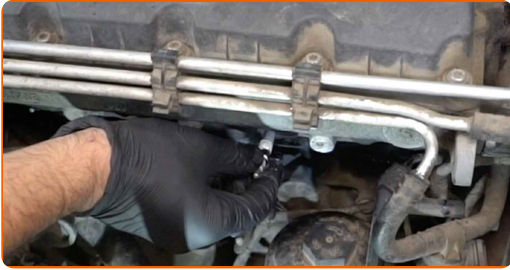


Please note!

- Do not touch the heating element as fingerprints may cause malfunction.

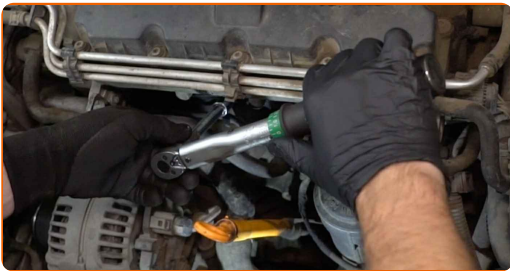
10

Install new glow plugs to their mounting seats.



11

Tighten the glow plugs. Use the spark plug socket #10. Use a torque wrench. Tighten it to 15 nm torque.

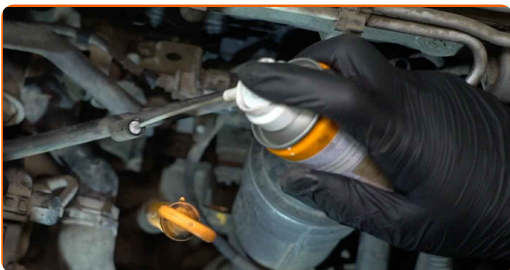


Replacement: glow plugs – SEAT Alhambra (7V8, 7V9). AUTODOC recommends:

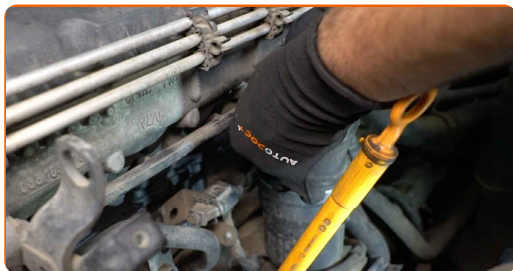
- Don't tighten the plugs with excessive force. Exceeding tightening torque can damage the thread connection.
- Be careful when working with a spark plug wrench. Its skewing can cause damage to the threaded connection.

12

Treat the glow plug connectors. Use dielectric grease.



13 Attach the glow plug wiring connectors.



14 Run the engine for a few minutes. This is necessary in order to make sure that the component operates properly.

15 Shut off the engine.

16 Remove the fender protection cover.

17 Close the hood.

WELL DONE! 

[VIEW MORE TUTORIALS](#)

AUTODOC – TOP QUALITY AND AFFORDABLE CAR PARTS ONLINE

AUTODOC MOBILE APP: GREAT DEALS AND CONVENIENT SHOPPING



+ AUTODOC

GET IT ON
Google Play

 Download on the
App Store

Download

A GREAT SELECTION OF SPARE PARTS FOR YOUR CAR

GLOW PLUGS: A WIDE SELECTION

DISCLAIMER:

The document contains only general recommendations that may be useful for you when you perform repair or replacement work. AUTODOC shall not be liable for any loss, injury, damage of property occurring in the repair or replacement process due to incorrect use or misinterpretation of the provided information.

AUTODOC shall not be liable for any possible mistakes and uncertainties in this guide. The information provided is for information purposes only and cannot replace advice from specialists.

AUTODOC shall not be liable for incorrect or hazardous usage of equipment, tools and car parts. AUTODOC strongly recommends to be careful and observe the safety rules when performing repair or replacement works. Remember: usage of low quality auto parts does not guarantee you the appropriate level of road safety.

© Copyright 2022 – All the contents of this website, in particular texts, photographs and graphics, are protected by copyright. All rights, including reproduction, publication, editing and translation rights, are reserved by AUTODOC GmbH.