



How to change front
brake discs on **RENAULT**
Thalia I (LB_) –
replacement guide

SIMILAR VIDEO TUTORIAL



This video shows the replacement procedure of a similar car part on another vehicle

Important!

This replacement procedure can be used for:

RENAULT Thalia I (LB_) 1.4 16V, RENAULT Thalia I (LB_) 1.5 dCi, RENAULT Thalia I (LB_) 1.6 16V, RENAULT Thalia I (LB_) 1.2 16V, RENAULT Thalia I (LB_) 1.6, RENAULT Thalia I (LB_) 1.9 D

The steps may slightly vary depending on the car design.

This tutorial was created based on the replacement procedure for a similar car part on: RENAULT KANGOO (KC0/1_) 1.2 16V

REPLACEMENT: BRAKE DISCS – RENAULT THALIA I (LB_). TOOLS YOU'LL NEED:



- Wire brush
- WD-40 spray
- Brake cleaner
- Copper grease
- Torx bit T30
- Impact socket №18
- Wheel impact socket #19
- Tap wrench
- Ratchet wrench
- Torque wrench
- Impact screwdriver
- Crow bar
- Wheel chock

Buy tools

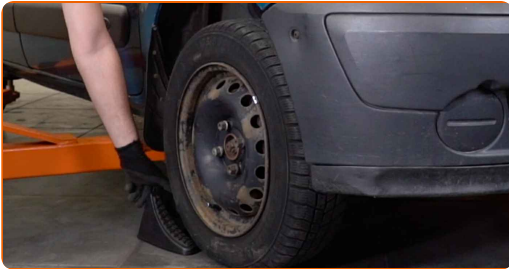
Replacement: brake discs – RENAULT Thalia I (LB_). AUTODOC experts recommend:

- Replace the brake discs on the car RENAULT Thalia I (LB_) in complete set for each axis. Regardless of the state of components. This will ensure even braking.
- The replacement procedure is identical for both brake disks on the same axle.
- When changing the brake discs, always replace the brake pads.
- All work should be done with the engine stopped.

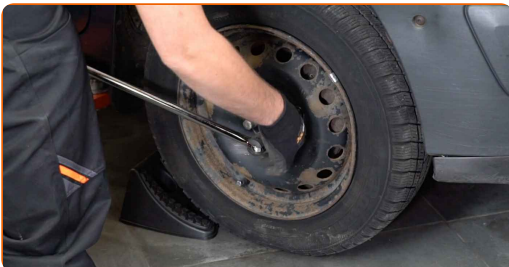
REPLACEMENT: BRAKE DISCS – RENAULT THALIA I (LB_). RECOMMENDED SEQUENCE OF STEPS:

1 Open the bonnet. Unscrew the brake fluid reservoir cap.

2 Secure the wheels with chocks.



3 Loosen the wheel mounting bolts. Use wheel impact socket #19.



4 Raise the front of the car and secure on supports.

5 Unscrew the wheel bolts.



Replacement: brake discs – RENAULT Thalia I (LB_). Tip:

- To avoid injury, hold up the wheel when unscrewing the bolts.

6 Remove the wheel.



7 Spread the brake pads. Use a crowbar.



8

Clean the brake caliper bracket from dirt and dust. Use a wire brush. Use WD-40 spray.



9

Unscrew the caliper bracket fastening. Use a drive socket #18. Use a ratchet wrench. Use a tap wrench.



10

Remove the brake caliper together with its bracket.



AUTODOC recommends:

- Tie the caliper to the suspension or to the body with a wire without disconnecting from the brake hose to prevent depressurization of the brake system.
- Make sure that the brake caliper is not hanging on the brake hose.
- Don't press the brake pedal after the brake caliper has been removed. As a result, the piston can fall out from the brake cylinder, and brake fluid leakage and depressurization of the system may occur.

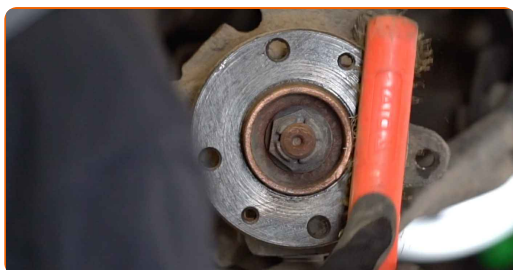
11 Unscrew the brake disc fastening. Use Torx T30. Use an impact screwdriver.



12 Remove the brake disc.



13 Clean the hub. Use a wire brush. Treat the contacting surface. Use copper grease.



14 Install the new brake disc on the hub and tighten the screws.



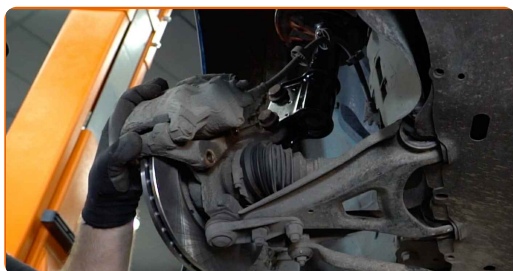
15

Tighten the brake disc fastening. Use Torx T30. Use a torque wrench. Tighten it to 14 Nm torque.



16

Install the brake caliper together with its bracket.



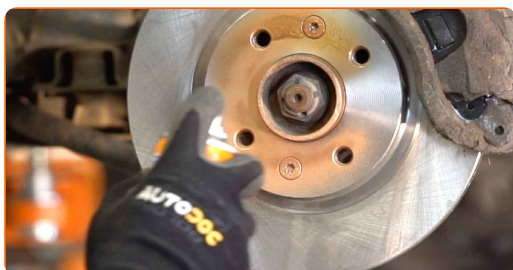
17

Tighten the brake caliper bracket. Use a drive socket #18. Use a torque wrench. Tighten it to 100 Nm torque.



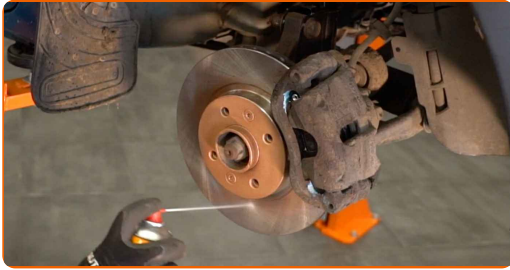
18

Treat the surface where the brake disc contacts the wheel rim. Use copper grease.



19

Clean the brake disk surface. Use a brake cleaner.



AUTODOC recommends:

- Replacement: brake discs – RENAULT Thalia I (LB_). After applying the spray, wait a few minutes.

20

Install the wheel.

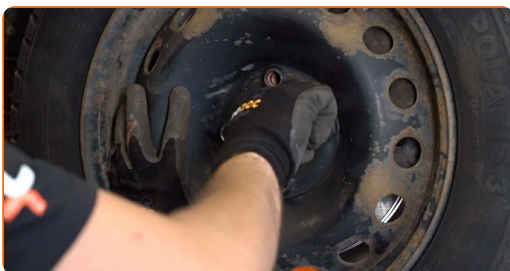


Replacement: brake discs – RENAULT Thalia I (LB_). AUTODOC experts recommend:

- To avoid injury, hold up the wheel when screwing in the fastening bolts.

21

Screw in the wheel bolts. Use wheel impact socket #19.



- 22** Lower the car and working in a cross order, tighten the wheel bolts. Use a torque wrench. Tighten it to 110 nm torque.



- 23** Remove the jacks and chocks.



- 24** Tighten the brake fluid reservoir cap.



- 25** Close the hood.

AUTODOC recommends:

- RENAULT Thalia I (LB_) – Press the brake pedal several times with the engine shut down until you feel the resistance built up.

WELL DONE! 

VIEW MORE TUTORIALS

AUTODOC – TOP QUALITY AND AFFORDABLE CAR PARTS ONLINE

AUTODOC MOBILE APP: GREAT DEALS AND CONVENIENT SHOPPING



A GREAT SELECTION OF SPARE PARTS FOR YOUR CAR

BRAKE DISCS: A WIDE SELECTION

(i) DISCLAIMER:

The document contains only general recommendations that may be useful for you when you perform repair or replacement work. AUTODOC shall not be liable for any loss, injury, damage of property occurring in the repair or replacement process due to incorrect use or misinterpretation of the provided information.

AUTODOC shall not be liable for any possible mistakes and uncertainties in this guide. The information provided is for information purposes only and cannot replace advice from specialists.

AUTODOC shall not be liable for incorrect or hazardous usage of equipment, tools and car parts. AUTODOC strongly recommends to be careful and observe the safety rules when performing repair or replacement works. Remember: usage of low quality auto parts does not guarantee you the appropriate level of road safety.

© Copyright 2023 – All the contents of this website, in particular texts, photographs and graphics, are protected by copyright. All rights, including reproduction, publication, editing and translation rights, are reserved by AUTODOC SE.