



How to change front anti
roll bar links on **RENAULT**
Symbol / Thalia I (LB) –
replacement guide

SIMILAR VIDEO TUTORIAL



This video shows the replacement procedure of a similar car part on another vehicle

Important!

This replacement procedure can be used for:

RENAULT Symbol / Thalia I (LB) 1.4 16V, RENAULT Symbol / Thalia I (LB) 1.5 dCi,
RENAULT Symbol / Thalia I (LB) 1.2 16V, RENAULT Symbol / Thalia I (LB) 1.6,
RENAULT Symbol / Thalia I (LB) 1.9 D

The steps may slightly vary depending on the car design.

This tutorial was created based on the replacement procedure for a similar car part on: RENAULT Kangoo I (KC) 1.2 16V

REPLACEMENT: ANTI ROLL BAR LINKS – RENAULT
SYMBOL / THALIA I (LB). TOOLS YOU MIGHT NEED:



- Wire brush
- WD-40 spray
- Copper grease
- Drive socket # 13
- Torx bit T45
- Wheel impact socket #19
- Ratchet wrench
- Torque wrench
- Hydraulic transmission jack
- Wheel chock

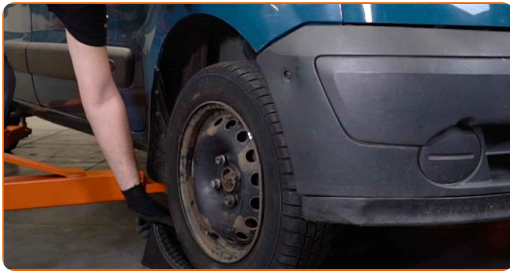
[Buy tools](#)

AUTODOC recommends:

- Replace the stabiliser links on RENAULT Symbol / Thalia I (LB) in pairs.
- The replacement procedure is identical for both stabiliser links on the same axle.
- All work should be done with the engine stopped.

REPLACEMENT: ANTI ROLL BAR LINKS – RENAULT SYMBOL / THALIA I (LB). USE THE FOLLOWING PROCEDURE:

1 Secure the wheels with chocks.



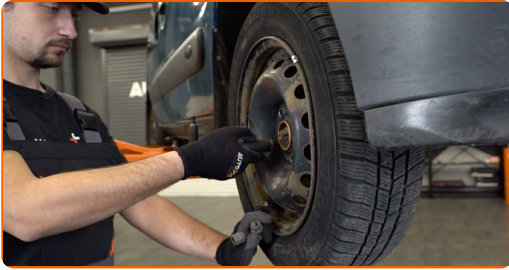
2 Loosen the wheel mounting bolts. Use wheel impact socket #19.



3 Raise the front of the car and secure on supports.

4

Unscrew the wheel bolts.



Replacement: anti roll bar links – RENAULT Symbol / Thalia I (LB). Tip from AUTODOC experts:

- To avoid injury, hold up the wheel when unscrewing the bolts.

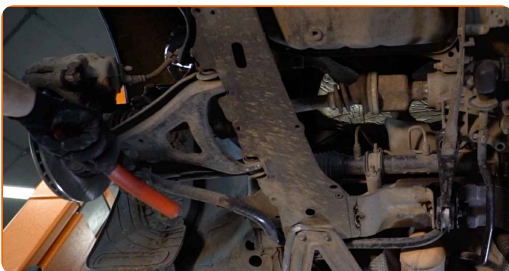
5

Remove the wheel.



6

Clean the stabiliser link fasteners. Use a wire brush. Use WD-40 spray.



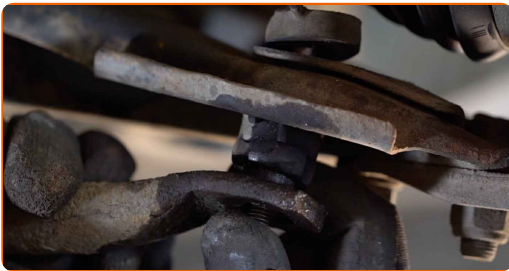
7

Unscrew the stabilizer rod fasteners. Use a drive socket #13. Use a ratchet wrench.



8

Remove the stabilizer rod.



Replacement: anti roll bar links – RENAULT Symbol / Thalia I (LB). Tip from AUTODOC:

- Examine stabiliser bushes. Replace them if needed.

9

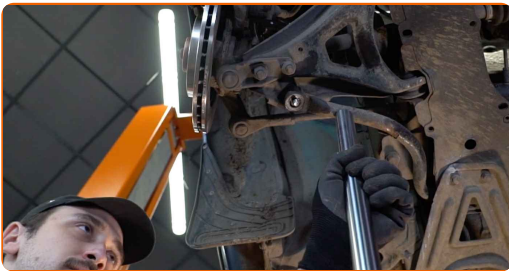
Clean all joints of the stabiliser link. Use a wire brush. Treat all joints of the stabiliser link. Use WD-40 spray.



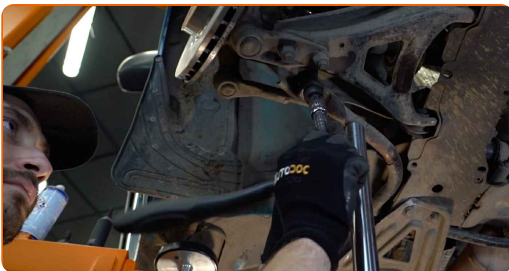
10 Install a new rod, tighten the fasteners.



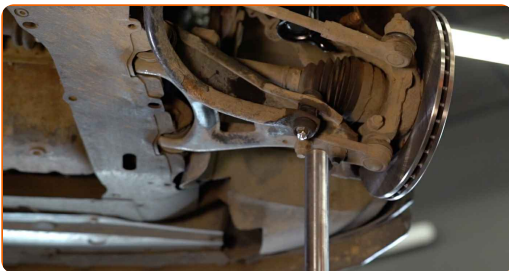
11 Support the stabilizer bar. Use a hydraulic transmission jack.



12 Tighten the stabiliser link fastener. Use Torx T45. Use a drive socket #13. Use a torque wrench. Tighten it to 35 Nm torque.



13 Remove the transmission jack from under the stabilizer bar.

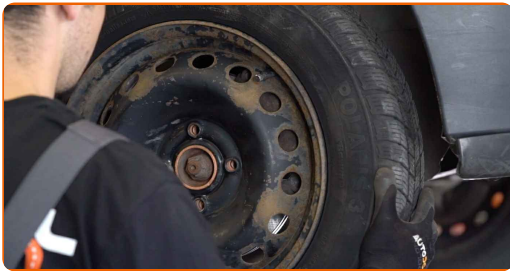


Replacement: anti roll bar links – RENAULT Symbol / Thalia I (LB). Tip:

- Clean the wheel rim mounting seat.

14

Install the wheel.



AUTODOC recommends:

- Warning! To avoid injury, hold the wheel while screwing in the fastening bolts on the car. RENAULT Symbol / Thalia I (LB)

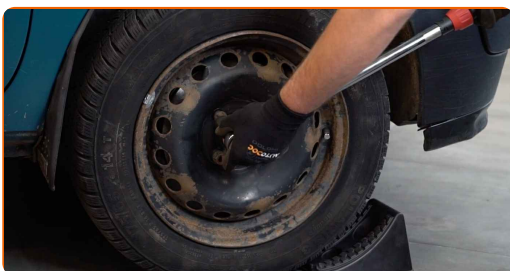
15

Screw in the wheel bolts. Use wheel impact socket #19.



16

Lower the car and working in a cross order, tighten the wheel bolts. Use wheel impact socket #19. Use a torque wrench. Tighten it to 110 Nm torque.



17

Remove the jacks and chocks.



WELL DONE! 

[VIEW MORE TUTORIALS](#)

AUTODOC – TOP QUALITY AND AFFORDABLE CAR PARTS ONLINE

AUTODOC MOBILE APP: GREAT DEALS AND CONVENIENT SHOPPING



AUTODOC

GET IT ON
 **Google Play**

Download on the
 **App Store**

Download

A GREAT SELECTION OF SPARE PARTS FOR YOUR CAR

ANTI ROLL BAR LINKS: A WIDE SELECTION

DISCLAIMER:

The document contains only general recommendations that may be useful for you when you perform repair or replacement work. AUTODOC shall not be liable for any loss, injury, damage of property occurring in the repair or replacement process due to incorrect use or misinterpretation of the provided information.

AUTODOC shall not be liable for any possible mistakes and uncertainties in this guide. The information provided is for information purposes only and cannot replace advice from specialists.

AUTODOC shall not be liable for incorrect or hazardous usage of equipment, tools and car parts. AUTODOC strongly recommends to be careful and observe the safety rules when performing repair or replacement works. Remember: usage of low quality auto parts does not guarantee you the appropriate level of road safety.

© Copyright 2022 – All the contents of this website, in particular texts, photographs and graphics, are protected by copyright. All rights, including reproduction, publication, editing and translation rights, are reserved by AUTODOC GmbH.