



How to change pollen
filter on **RENAULT**
Sandero / Stepway II
(B8_) – replacement
guide

SIMILAR VIDEO TUTORIAL



This video shows the replacement procedure of a similar car part on another vehicle

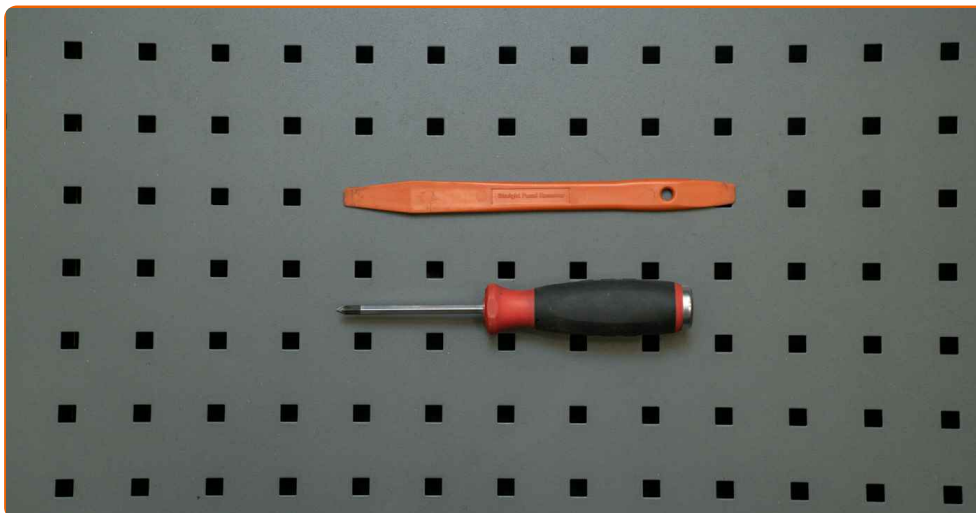
Important!

This replacement procedure can be used for:
 RENAULT Sandero / Stepway II (B8_) 1.6

The steps may slightly vary depending on the car design.

This tutorial was created based on the replacement procedure for a similar car part on: NISSAN MICRA III (K12) 1.4 16V

REPLACEMENT: POLLEN FILTER – RENAULT SANDERO
/ STEPWAY II (B8_). TOOLS YOU'LL NEED:



• Phillips screwdriver

• Plastic trim tool

Buy tools

Replacement: pollen filter – RENAULT Sandero / Stepway II (B8_). AUTODOC recommends:

- All work should be done with the engine stopped.
- Replace the cabin filter at least once every six months, in early spring and autumn seasons.
- Follow the terms, recommendations and requirements of the part operation provided by the manufacturer.
- If the air flow into the cabin has sharply reduced, replace the filter before a scheduled maintenance.
- Warning! Shut down the engine before starting any work – RENAULT Sandero / Stepway II (B8_).

CARRY OUT REPLACEMENT IN THE FOLLOWING ORDER:

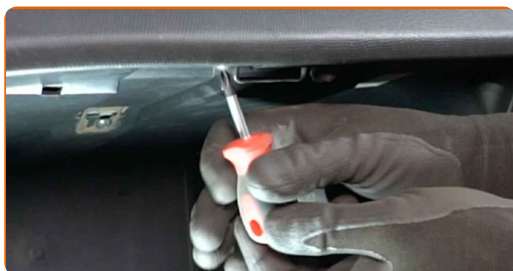
1 Open the car door.



2 Open the glove box.



3 Unscrew the glove box mounting screws. Use a Phillips screwdriver.



4 Remove the glove box cover retainers.



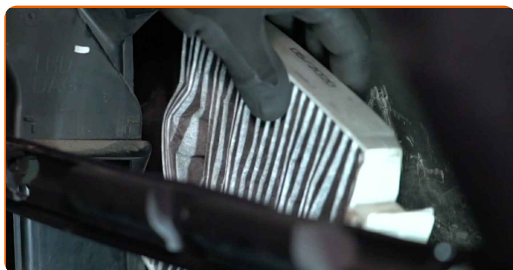
5 Detach the glove box cover.



6 Take out the inner part of the glove box. Use a plastic trim tool.



7 Remove the cabin filter.



Replacement: pollen filter – RENAULT Sandero / Stepway II (B8_). Tip:

- Do not attempt to clean and reuse the filter – this will reduce the quality of cabin air filtration.

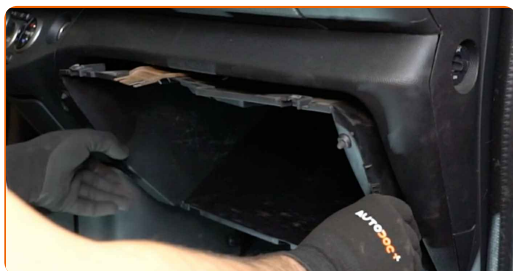
8

Install the new pollen filter.



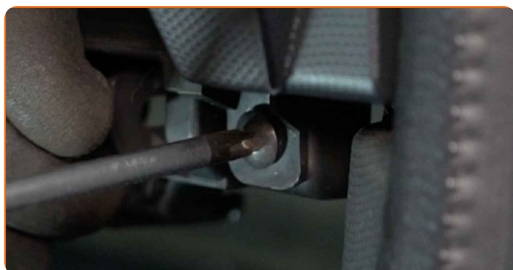
9

Install the inner part of the glove box.



10

Screw in the glove box mounting screws. Use a Phillips screwdriver.



11

Install the glove box cover.



12 Install the glove box cover retainers.



13 Close the glove box.



14 Close the car door.



15 Switch on the ignition.

16 Switch on the air conditioning system.

Replacement: pollen filter – RENAULT Sandero / Stepway II (B8_). Tip from AUTODOC experts:

- This is necessary in order to make sure that the component operates properly.

17

Switch off the ignition.

WELL DONE! 

VIEW MORE TUTORIALS

AUTODOC – TOP QUALITY AND AFFORDABLE CAR PARTS ONLINE

AUTODOC MOBILE APP: GREAT DEALS AND CONVENIENT SHOPPING



+ AUTODOC

GET IT ON
Google Play

Download on the
App Store

Download

A GREAT SELECTION OF SPARE PARTS FOR YOUR CAR

POLLEN FILTER: A WIDE SELECTION

DISCLAIMER:

The document contains only general recommendations that may be useful for you when you perform repair or replacement work. AUTODOC shall not be liable for any loss, injury, damage of property occurring in the repair or replacement process due to incorrect use or misinterpretation of the provided information.

AUTODOC shall not be liable for any possible mistakes and uncertainties in this guide. The information provided is for information purposes only and cannot replace advice from specialists.

AUTODOC shall not be liable for incorrect or hazardous usage of equipment, tools and car parts. AUTODOC strongly recommends to be careful and observe the safety rules when performing repair or replacement works. Remember: usage of low quality auto parts does not guarantee you the appropriate level of road safety.

© Copyright 2023 – All the contents of this website, in particular texts, photographs and graphics, are protected by copyright. All rights, including reproduction, publication, editing and translation rights, are reserved by AUTODOC SE.