



How to change front  
brake pads on **RENAULT**  
**RAPID Box (F40\_, G40\_)**  
– replacement guide

## SIMILAR VIDEO TUTORIAL



This video shows the replacement procedure of a similar car part on another vehicle

### Important!

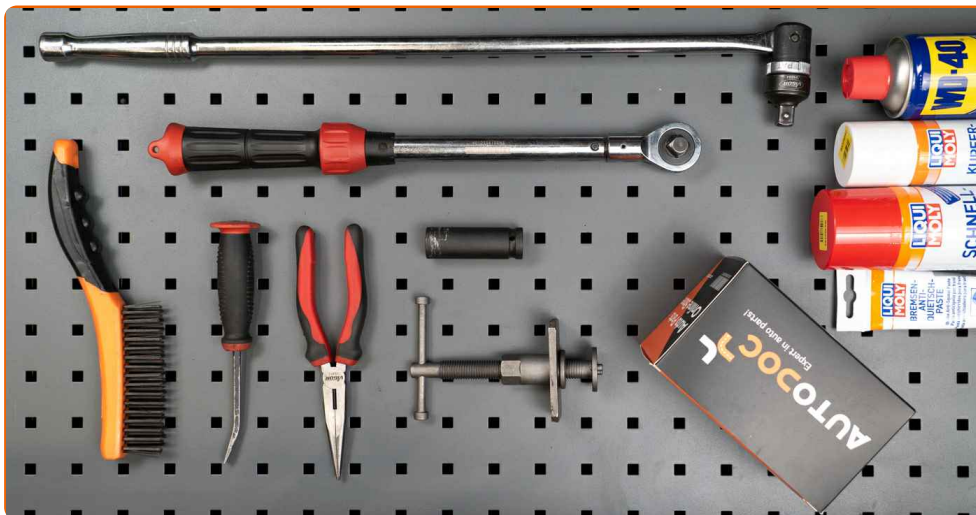
This replacement procedure can be used for:

RENAULT RAPID Box (F40\_, G40\_) 1.1, RENAULT RAPID Box (F40\_, G40\_) 1.6 D,  
RENAULT RAPID Box (F40\_, G40\_) 1.0

The steps may slightly vary depending on the car design.

This tutorial was created based on the replacement procedure for a similar car part on: RENAULT TWINGO I (C06\_) 1.2

REPLACEMENT: BRAKE PADS – RENAULT RAPID BOX (F40\_, G40\_). LIST OF THE TOOLS YOU'LL NEED:



- Brake cleaner
- Anti-squeal paste
- Copper grease
- Wheel impact socket #17
- Torque wrench
- Round-nose pliers
- Crow bar
- Wheel chock

**Buy tools**

Replacement: brake pads – RENAULT RAPID Box (F40\_, G40\_). Tip from AUTODOC experts:

- Perform the replacement of brake pads in complete set for each axis. This provides effective braking.
- The replacement procedure is identical for all brake pads on the same axle.
- All work should be done with the engine stopped.

## REPLACEMENT: BRAKE PADS – RENAULT RAPID BOX (F40\_, G40\_). USE THE FOLLOWING PROCEDURE:

**1** Open the bonnet. Unscrew the brake fluid reservoir cap.

**2** Secure the wheels with chocks.



**3** Loosen the wheel mounting bolts. Use wheel impact socket #17.



**4** Raise the front of the car and secure on supports.

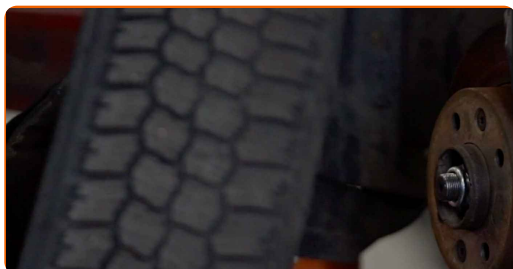
**5** Unscrew the wheel bolts.



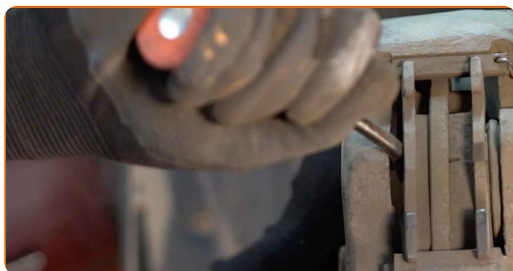
**AUTODOC recommends:**

- Important! Hold the wheel while unscrewing the fastening bolts. RENAULT RAPID Box (F40\_, G40\_)

**6** Remove the wheel.



**7** Spread the brake pads. Use a crowbar.



**8** Remove the brake pad retaining pin. Use a crowbar.



**9** Remove the retainer of the brake pads.



**10** Remove the brake pads.



Replacement: brake pads – RENAULT RAPID Box (F40\_, G40\_). Tip:

- Measure the brake disc thickness. Upon reaching the wear limit the part must be replaced.

**11** Treat the brake pads in the area where their surface comes into contact with the brake caliper bracket. Use anti-squeal paste.



Replacement: brake pads – RENAULT RAPID Box (F40\_, G40\_). AUTODOC recommends:

- Make sure the disc surface is clean before installing the pads.

**12** Install new brake pads.



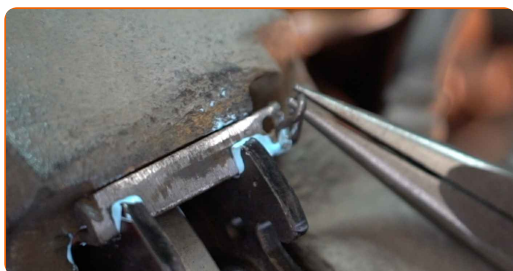
Replacement: brake pads – RENAULT RAPID Box (F40\_, G40\_). AUTODOC experts recommend:

- Make sure the pads are installed with linings facing the disc.

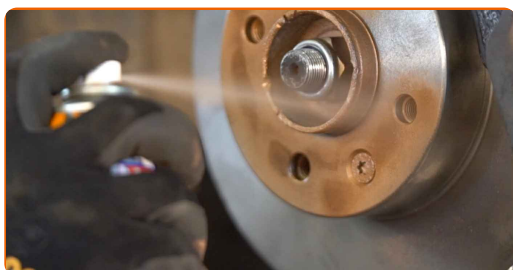
**13** Install the retainer of the brake pads.



**14** Install the brake pad retaining pin. Use round-nose pliers.



**15** Treat the surface where the brake disc contacts the wheel rim. Use copper grease.





16

Clean the brake disk surface. Use a brake cleaner.



**AUTODOC recommends:**

- Replacement: brake pads – RENAULT RAPID Box (F40\_, G40\_). After applying the spray, wait a few minutes.

17

Install the wheel.

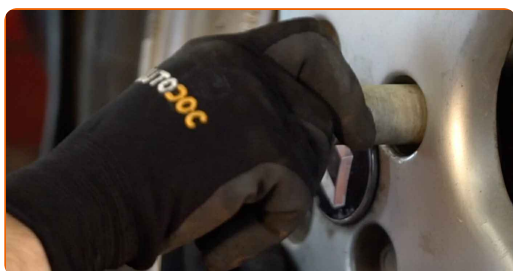


Replacement: brake pads – RENAULT RAPID Box (F40\_, G40\_). Tip from AUTODOC experts:

- To avoid injury, hold up the wheel when screwing in the fastening bolts.

18

Screw in the wheel bolts. Use wheel impact socket #17.





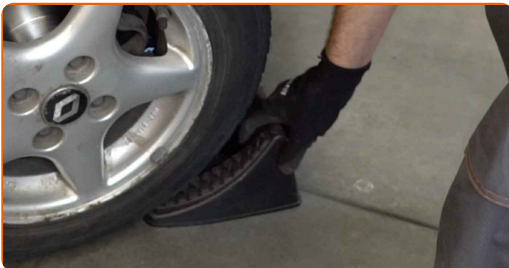
**19**

Lower the car and working in a cross order, tighten the wheel bolts. Use a torque wrench. Tighten it to 90 Nm torque.



**20**

Remove the jacks and chocks.

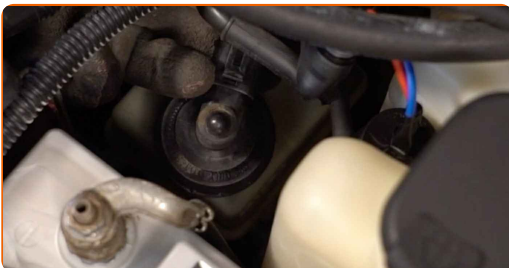


**AUTODOC recommends:**

- Important! Replacement: brake pads – RENAULT RAPID Box (F40\_, G40\_). Check the brake fluid level in the reservoir and top up if necessary.

**21**

Tighten the brake fluid reservoir cap.



**AUTODOC recommends:**

- RENAULT RAPID Box (F40\_, G40\_) – Without starting the engine, press the brake pedal several times until it feels firm.

22

Close the hood.

Replacement: brake pads – RENAULT RAPID Box (F40\_, G40\_). Tip:

- Slow down smoothly for first 150-200 km after the brake pads replacement. Avoid unnecessary and sharp braking to a stop.

**WELL DONE!** 

[VIEW MORE TUTORIALS](#)

# AUTODOC – TOP QUALITY AND AFFORDABLE CAR PARTS ONLINE

**AUTODOC MOBILE APP: GREAT DEALS AND CONVENIENT SHOPPING**



**+ AUTODOC**

GET IT ON  
**Google Play**

 Download on the  
**App Store**

**Download**

**A GREAT SELECTION OF SPARE PARTS FOR YOUR CAR**

**BRAKE PADS: A WIDE SELECTION**

## **DISCLAIMER:**

The document contains only general recommendations that may be useful for you when you perform repair or replacement work. AUTODOC shall not be liable for any loss, injury, damage of property occurring in the repair or replacement process due to incorrect use or misinterpretation of the provided information.

AUTODOC shall not be liable for any possible mistakes and uncertainties in this guide. The information provided is for information purposes only and cannot replace advice from specialists.

AUTODOC shall not be liable for incorrect or hazardous usage of equipment, tools and car parts. AUTODOC strongly recommends to be careful and observe the safety rules when performing repair or replacement works. Remember: usage of low quality auto parts does not guarantee you the appropriate level of road safety.

© Copyright 2023 – All the contents of this website, in particular texts, photographs and graphics, are protected by copyright. All rights, including reproduction, publication, editing and translation rights, are reserved by AUTODOC SE.