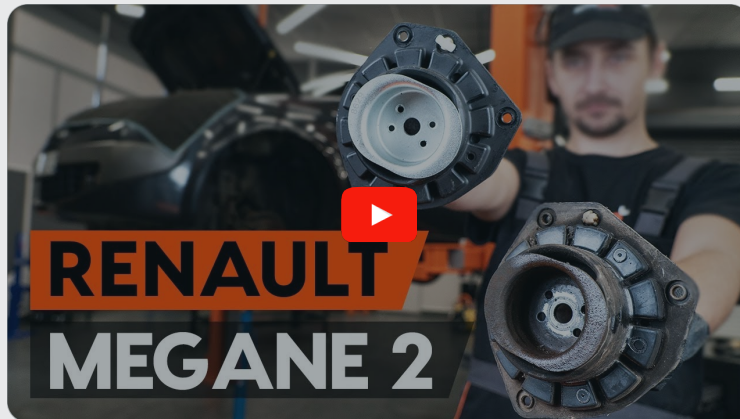




How to change front
strut mount on **RENAULT**
Megane II Coupé-
Cabriolet (EM) –
replacement guide

SIMILAR VIDEO TUTORIAL



This video shows the replacement procedure of a similar car part on another vehicle

Important!

This replacement procedure can be used for:

RENAULT Megane II Coupé-Cabriolet (EM) 1.6, RENAULT Megane II Coupé-Cabriolet (EM) 2.0, RENAULT Megane II Coupé-Cabriolet (EM) 1.9 dCi, RENAULT Megane II Coupé-Cabriolet (EM) 2.0 16V Turbo, RENAULT Megane II Coupé-Cabriolet (EM) 2.0 dCi, RENAULT Megane II Coupé-Cabriolet (EM) 1.5 dCi, RENAULT Megane II Coupé-Cabriolet (EM) 1.6 16V

The steps may slightly vary depending on the car design.

This tutorial was created based on the replacement procedure for a similar car part on: RENAULT Megane II Saloon (LM) 1.4

REPLACEMENT: STRUT MOUNT – RENAULT MEGANE II
COUPÉ-CABRIOLET (EM). TOOLS YOU MIGHT NEED:



- Wire brush
- WD-40 spray
- Copper grease
- Drive socket # 13
- Drive socket # 19
- HEX bit No.H6.
- Combination spanner #17
- Combination spanner #18
- Combination spanner #19
- Wheel impact socket #19
- Ratchet wrench
- Torque wrench
- Tap wrench
- Hammer
- Flat chisel
- Clip removal tool
- Crow bar
- Hydraulic transmission jack
- Hydraulic strut spring compressor
- Fender cover
- Wheel chock

[Buy tools](#)

Replacement: strut mount – RENAULT Megane II Coupé-Cabriolet (EM).
AUTODOC recommends:

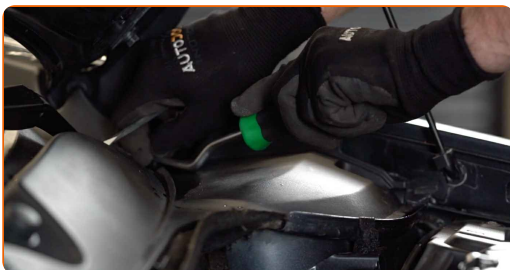
- All mounts of the front shock struts should be replaced simultaneously.
- The replacement procedure is identical for the mounts of the left and right shock struts of the front suspension.
- Be sure to replace all self-locking nuts and bolts during installation.
- All work should be done with the engine stopped.

REPLACEMENT: STRUT MOUNT – RENAULT MEGANE II COUPÉ-CABRIOLET (EM). RECOMMENDED SEQUENCE OF STEPS:

1 Open the bonnet.

2 Use a fender protection cover to prevent damaging paintwork and plastic parts of the car.

3 Remove the retainers of the shock strut mount cap. Use a clip removal tool.



4

Raise a little the shock strut mount cap. Treat the fasteners of the shock strut mount. Use WD-40 spray.



5

Loosen the upper fastener of the shock strut mount. Use a drive socket #13. Use a ratchet wrench.



6

Secure the wheels with chocks.



7

Loosen the wheel mounting bolts. Use wheel impact socket #19.

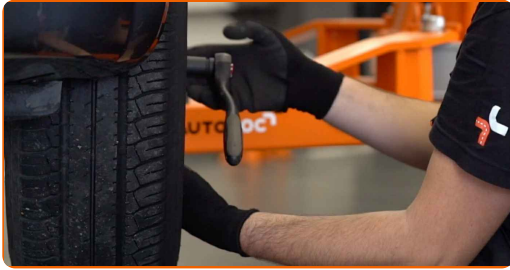


8

Raise the front of the car and secure on supports.

9

Unscrew the wheel bolts.

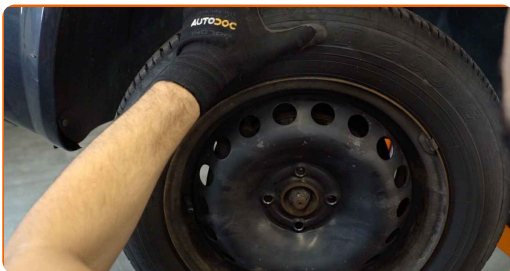


Replacement: strut mount – RENAULT Megane II Coupé-Cabriolet (EM). Tip:

- To avoid injury, hold up the wheel when unscrewing the bolts.

10

Remove the wheel.



11

Disconnect the wiring and the brake hose from the bracket on the shock strut. Use a crowbar.



12

Clean the stabiliser link fasteners. Use a wire brush. Use WD-40 spray.



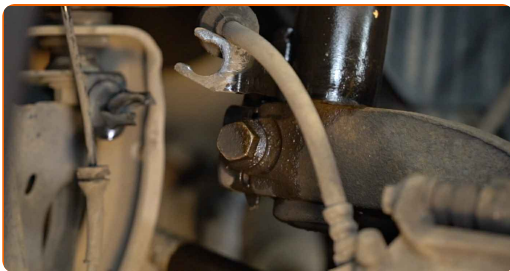
13

Unscrew the nut and remove the stabilizer rod from the shock strut. Use HEX No.H6. Use a combination spanner #17.



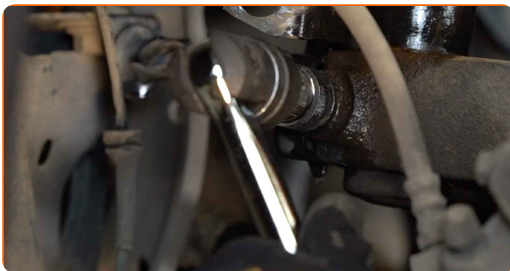
14

Clean the fasteners connecting the shock strut to the steering knuckle. Use a wire brush. Use WD-40 spray.



15

Unscrew the lower fastener of the shock absorber strut. Use a drive socket #19. Use a tap wrench.



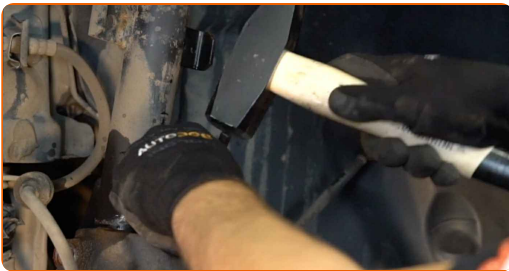
16 Remove the fastening bolt.



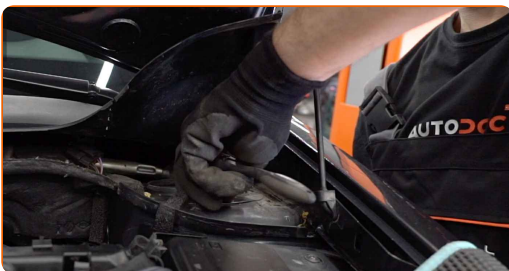
Replacement: strut mount – RENAULT Megane II Coupé-Cabriolet (EM).
AUTODOC experts recommend:

- Make sure that the steering knuckle is supported.

17 Disconnect the steering knuckle from the shock absorber strut. Use a hammer. Use a flat metal-working chisel.



18 Unscrew the upper fastening of the shock absorber strut. Use a drive socket #13. Use a ratchet wrench.



Replacement: strut mount – RENAULT Megane II Coupé-Cabriolet (EM).
Professionals recommend:

- To avoid injuries, hold the shock strut when undoing the fastening bolts.

19

Remove the suspension strut.



20

Set the shock absorber strut on the spring compressor tool.



Replacement: strut mount – RENAULT Megane II Coupé-Cabriolet (EM). Tip
from AUTODOC experts:

- Note that when using a spring compressor, spring coils need to be securely gripped, compressing the spring on the opposite sides.
- Ensure the correct position of the spring in the retainer.
- Make sure that the spring coils tightly entered the lock handles.

21 Compress the spring.



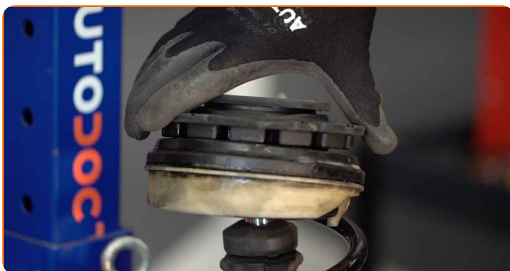
22 Remove the strut piston rod nut. Use HEX No.H6. Use a combination spanner #18. Use a ratchet wrench.



23 Remove the top strut mount.



24 Install a new top shock strut mount.



- 25** Tighten the shock strut piston rod nut. Use HEX No.H6. Use a combination spanner #18. Use a torque wrench. Tighten it to 62 Nm torque.



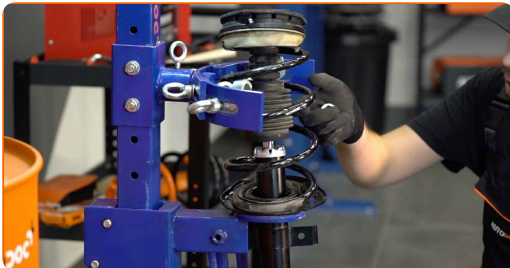
Replacement: strut mount – RENAULT Megane II Coupé-Cabriolet (EM). Tip from AUTODOC:

- Check to make sure the spring is positioned correctly. Avoid its misalignment.
- Important! Be sure to use new fasteners.

- 26** Decompress the spring.

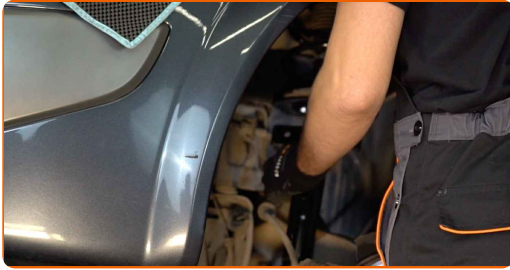


- 27** Remove the assembled shock strut.



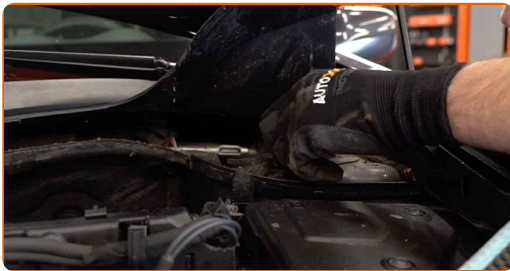
28

Install the shock strut into the wheel arch.



29

Secure the upper fasteners of the shock strut (3 pieces). Do not tighten it.

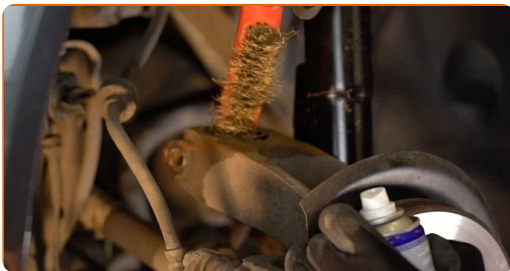


AUTODOC recommends:

- Important! Hold the suspension strut while screwing in the fastening bolts.
RENAULT Megane II Coupé-Cabriolet (EM)

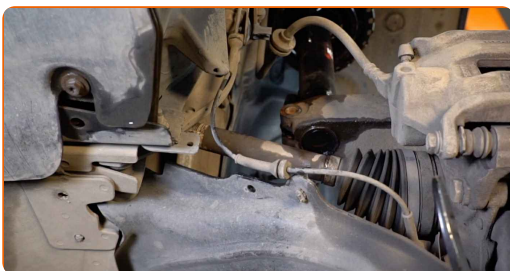
30

Treat the shock strut mounting seat on the steering knuckle. Use a wire brush. Use WD-40 spray.



31

Fix the shock absorber strut on the steering knuckle.



32

Prop up the steering knuckle. Use a hydraulic transmission jack.



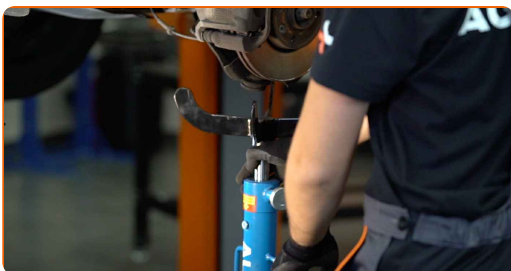
33

Install and tighten a new bolt of the steering knuckle. Use a drive socket #19. Use a combination spanner #19. Use a torque wrench. Tighten it to 105 Nm torque.



34

Remove the support from under the steering knuckle.



AUTODOC recommends:

- Replacement: strut mount – RENAULT Megane II Coupé-Cabriolet (EM). Lower the transmission jack smoothly, without jerks, to avoid damaging components and mechanisms.

35

Connect the fastener of the ABS sensor cable to the shock absorber strut. Fasten the brake hose on the strut.



36

Secure the stabilizer link on the suspension strut. Use HEX No.H6. Use a combination spanner #17. Use a torque wrench. Tighten it to 44 Nm torque.



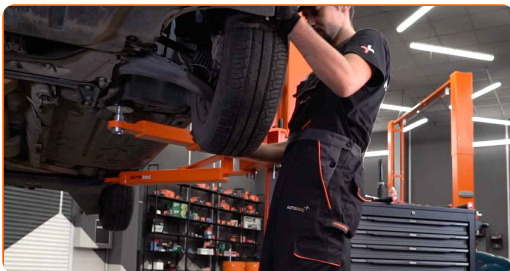
37

Clean the wheel rim mounting seat. Use a wire brush. Treat the contacting surface. Use copper grease.



38

Install the wheel.

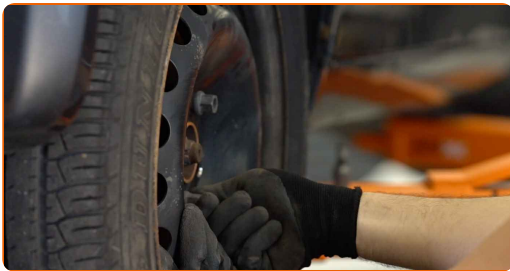


Replacement: strut mount – RENAULT Megane II Coupé-Cabriolet (EM).
AUTODOC experts recommend:

- To avoid injury, hold up the wheel when screwing in the fastening bolts.

39

Screw in the wheel bolts. Use wheel impact socket #19.



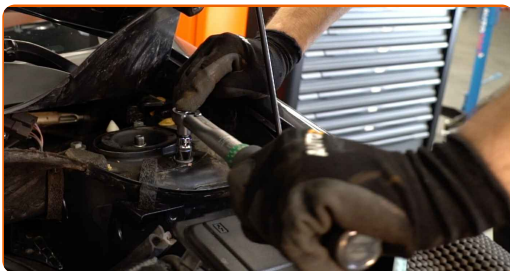
40

Lower the car and working in a cross order, tighten the wheel bolts. Use a torque wrench. Tighten it to 110 Nm torque.



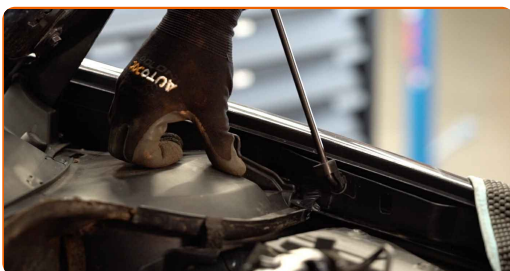
41

Tighten the shock strut top mount. Use a drive socket #13. Use a torque wrench. Tighten it to 21 Nm torque.



42

Install the shock strut mount cap.



43

Install the retainers of the shock strut mount cap.



44

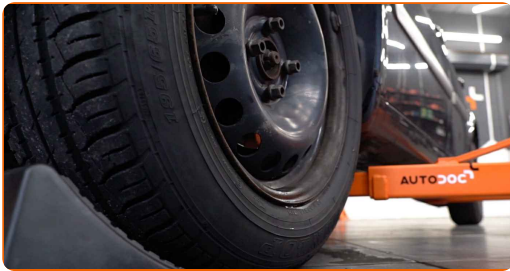
Remove the fender protection cover.

45

Close the hood.

46

Remove the jacks and chocks.



WELL DONE! 👍

[VIEW MORE TUTORIALS](#)

AUTODOC – TOP QUALITY AND AFFORDABLE CAR PARTS ONLINE

AUTODOC MOBILE APP: GREAT DEALS AND CONVENIENT SHOPPING

AUTODOC

GET IT ON
Google Play

Download on the
App Store

Download

A GREAT SELECTION OF SPARE PARTS FOR YOUR CAR

STRUT MOUNT: A WIDE SELECTION

(i) DISCLAIMER:

The document contains only general recommendations that may be useful for you when you perform repair or replacement work. AUTODOC shall not be liable for any loss, injury, damage of property occurring in the repair or replacement process due to incorrect use or misinterpretation of the provided information.

AUTODOC shall not be liable for any possible mistakes and uncertainties in this guide. The information provided is for information purposes only and cannot replace advice from specialists.

AUTODOC shall not be liable for incorrect or hazardous usage of equipment, tools and car parts. AUTODOC strongly recommends to be careful and observe the safety rules when performing repair or replacement works. Remember: usage of low quality auto parts does not guarantee you the appropriate level of road safety.

© Copyright 2022 – All the contents of this website, in particular texts, photographs and graphics, are protected by copyright. All rights, including reproduction, publication, editing and translation rights, are reserved by AUTODOC GmbH.