



How to change front
brake discs on **RENAULT**
Megane II Box Body /
Hatchback (KM0/2_) –
replacement guide

SIMILAR VIDEO TUTORIAL



This video shows the replacement procedure of a similar car part on another vehicle

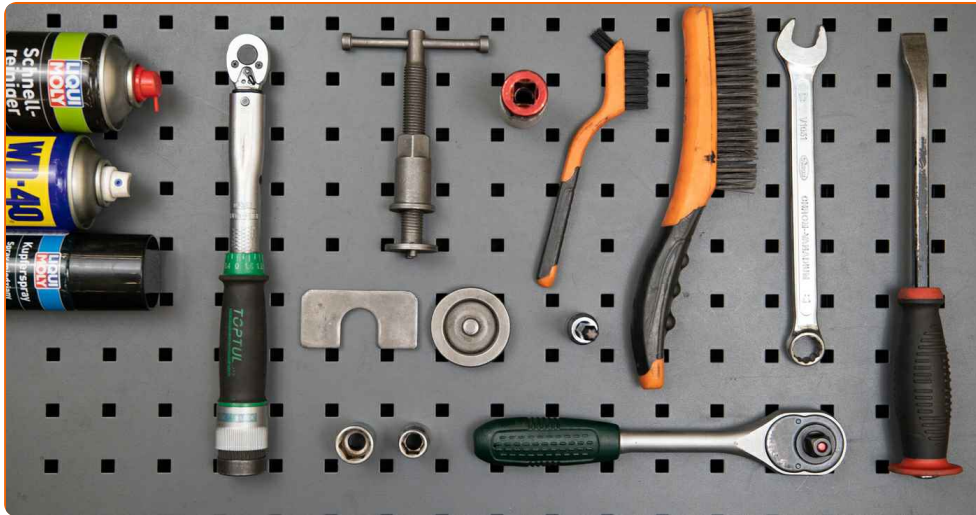
Important!

This replacement procedure can be used for:
RENAULT Megane II Box Body / Hatchback (KM0/2_) 1.5 dCi

The steps may slightly vary depending on the car design.

This tutorial was created based on the replacement procedure for a similar car part on: RENAULT Megane Scenic (JA) 1.6 16V

REPLACEMENT: BRAKE DISCS – RENAULT MEGANE II
BOX BODY / HATCHBACK (KM0/2_). LIST OF THE
TOOLS YOU'LL NEED:



- Wire brush
- Nylon cleaning brush
- WD-40 spray
- Brake cleaner
- Copper grease
- Torque wrench
- Combination spanner #17
- Drive socket # 13
- Drive socket # 18
- Wheel impact socket #19
- Torx bit T40
- Ratchet wrench
- Crow bar
- Brake caliper wind back tool
- Wheel chock

[Buy tools](#)

AUTODOC recommends:

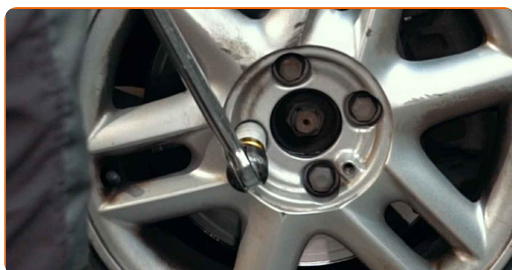
- Replace the brake disks on the car RENAULT Megane II Box Body / Hatchback (KM0/2_) in complete set for each axis. Regardless of the state of components. This will ensure even braking.
- The replacement procedure is identical for both brake disks on the same axle.
- When changing the brake discs, always replace the brake pads.
- Please note: all work on the car – RENAULT Megane II Box Body / Hatchback (KM0/2_) – should be done with the engine switched off.

CARRY OUT REPLACEMENT IN THE FOLLOWING ORDER:

1 Open the bonnet. Unscrew the brake fluid reservoir cap.

2 Secure the wheels with chocks.

3 Loosen the wheel mounting bolts. Use wheel impact socket #19.



4 Raise the car.

Replacement: brake discs – RENAULT Megane II Box Body / Hatchback (KM0/2_). Professionals recommend:

- If you are using a jack, make sure it rests on a flat surface without any unevenness.
- Be sure to additionally secure the car with jack stands.

5

Unscrew the wheel bolts.



AUTODOC recommends:

- Warning! To avoid injury, hold the wheel while unscrewing the fastening bolts.
RENAULT Megane II Box Body / Hatchback (KM0/2_)

6

Remove the wheel.



7

Clean the brake caliper fasteners. Use a wire brush. Use WD-40 spray.



8

Unscrew the brake caliper fastening. Use a combination spanner #17. Use a drive socket #13. Use a ratchet wrench.



9

Remove the brake caliper.



AUTODOC recommends:

- Tie the caliper to the suspension or to the body with a wire without disconnecting from the brake hose to prevent depressurization of the brake system.
- Make sure that the brake caliper is not hanging on the brake hose.
- Don't press the brake pedal after the brake caliper has been removed. As a result, the piston can fall out from the brake cylinder, and brake fluid leakage and depressurization of the system may occur.

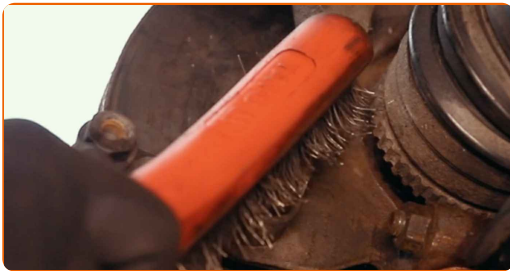
10

Remove the brake pads. Use a crowbar.



11

Clean the brake caliper bracket fasteners. Use a wire brush. Use WD-40 spray.



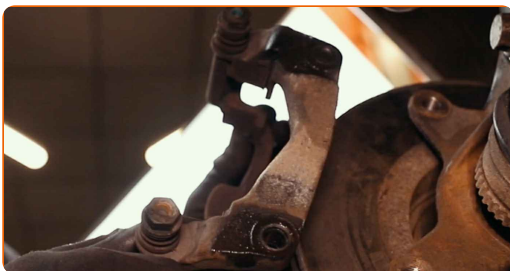
12

Unscrew the caliper bracket fastening. Use a drive socket #18. Use a ratchet wrench.



13

Remove the caliper bracket.



14

Clean the brake disc fasteners. Use a wire brush. Use WD-40 spray.



15

Unscrew the brake disc fastening. Use Torx T40. Use a ratchet wrench.



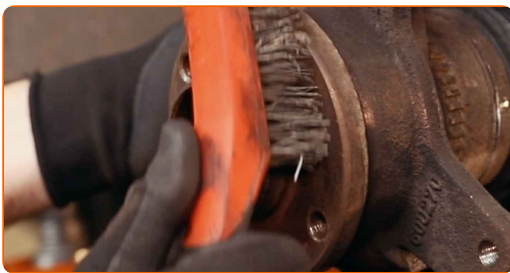
16

Remove the brake disc.



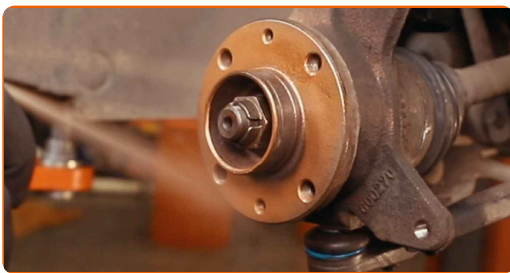
17

Clean the hub. Use a wire brush.



18

Treat the contacting surface. Use copper grease.



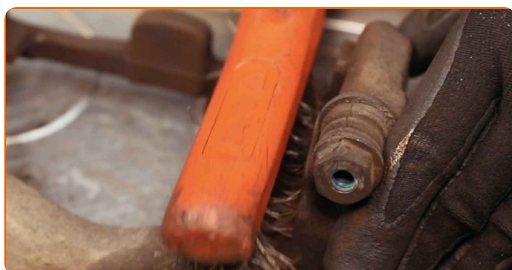
19 Install the brake disc.



20 Tighten the brake disc fastening. Use Torx T40. Use a torque wrench. Tighten it to 14 Nm torque.



21 Clean the brake caliper bracket from dirt and dust. Use a wire brush. Use a brake cleaner.



AUTODOC recommends:

- Replacement: brake discs – RENAULT Megane II Box Body / Hatchback (KM0/2_). After applying the spray, wait a few minutes.
- Check the brake caliper bracket, brake caliper guide pins and boots. Clean them. Replace, if necessary.

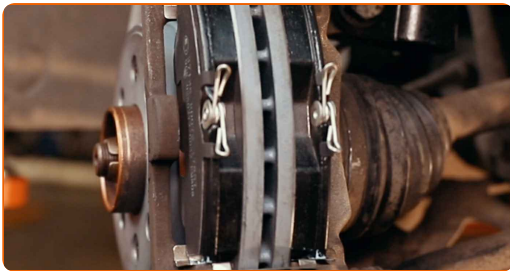
22 Install the brake caliper bracket.



23 Tighten the brake caliper bracket. Use a drive socket #18. Use a torque wrench. Tighten it to 100 Nm torque.



24 Install the brake pads.



25 Treat the brake caliper piston. Use a nylon cleaning brush. Use a brake cleaner.



AUTODOC recommends:

- After applying the spray, wait a few minutes.

26 Press in the brake caliper piston. Use brake caliper wind back tool.



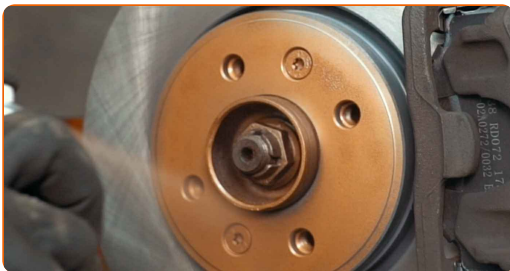
27 Install the brake caliper and fix it.



28 Tighten the brake caliper fasteners. Use a combination spanner #17. Use a drive socket #13. Use a torque wrench. Tighten it to 32 Nm torque.



29 Treat the surface where the brake disc contacts the wheel rim. Use copper grease.



30

Clean the brake disk surface. Use a brake cleaner.



AUTODOC recommends:

- Replacement: brake discs – RENAULT Megane II Box Body / Hatchback (KM0/2_). After applying the spray, wait a few minutes.

31

Install the wheel.



AUTODOC recommends:

- Warning! To avoid injury, hold the wheel while screwing in the fastening bolts on the car. RENAULT Megane II Box Body / Hatchback (KM0/2_)

32

Screw in the wheel bolts. Use wheel impact socket #19.



- 33** Lower the car and working in a cross order, tighten the wheel bolts. Use wheel impact socket #19. Use a torque wrench. Tighten it to 90 Nm torque.



- 34** Remove the jacks and chocks.



Replacement: brake discs – RENAULT Megane II Box Body / Hatchback (KM0/2_). AUTODOC recommends:

- Without starting the engine, press the brake pedal several times until you feel significant resistance.
- Check the brake fluid level in the expansion tank and refill if necessary.

- 35** Tighten the brake fluid reservoir cap. Close the hood.

WELL DONE! 

VIEW MORE TUTORIALS

AUTODOC – TOP QUALITY AND AFFORDABLE CAR PARTS ONLINE

AUTODOC MOBILE APP: GREAT DEALS AND CONVENIENT SHOPPING

AUTODOC

GET IT ON
 Google Play

Download on the
 App Store

Download

A GREAT SELECTION OF SPARE PARTS FOR YOUR CAR

BRAKE DISCS: A WIDE SELECTION

(i) DISCLAIMER:

The document contains only general recommendations that may be useful for you when you perform repair or replacement work. AUTODOC shall not be liable for any loss, injury, damage of property occurring in the repair or replacement process due to incorrect use or misinterpretation of the provided information.

AUTODOC shall not be liable for any possible mistakes and uncertainties in this guide. The information provided is for information purposes only and cannot replace advice from specialists.

AUTODOC shall not be liable for incorrect or hazardous usage of equipment, tools and car parts. AUTODOC strongly recommends to be careful and observe the safety rules when performing repair or replacement works. Remember: usage of low quality auto parts does not guarantee you the appropriate level of road safety.

© Copyright 2022 – All the contents of this website, in particular texts, photographs and graphics, are protected by copyright. All rights, including reproduction, publication, editing and translation rights, are reserved by AUTODOC GmbH.