



How to change track rod  
end on **RENAULT**  
**Megane I Grandtour**  
**(KA)** – replacement guide

## SIMILAR VIDEO TUTORIAL



This video shows the replacement procedure of a similar car part on another vehicle

### Important!

This replacement procedure can be used for:

RENAULT Megane I Grandtour (KA) 1.4 e, RENAULT Megane I Grandtour (KA) 1.6 e, RENAULT Megane I Grandtour (KA) 1.9 D, RENAULT Megane I Grandtour (KA) 1.9 dTi, RENAULT Megane I Grandtour (KA) 1.4 16V, RENAULT Megane I Grandtour (KA) 1.6 16V, RENAULT Megane I Grandtour (KA) 1.9 dCi, RENAULT Megane I Grandtour (KA) 1.8 16V

The steps may slightly vary depending on the car design.

This tutorial was created based on the replacement procedure for a similar car part on: RENAULT Twingo I Hatchback 1.2

**REPLACEMENT: TRACK ROD END – RENAULT MEGANE I GRANDTOUR (KA). TOOLS YOU NEED:**



- Wire brush
- WD-40 spray
- Brake cleaner
- Copper grease
- Combination spanner #13
- Combination spanner #21
- Combination spanner #22
- Drive socket # 13
- Drive socket # 17
- Drive socket # 18
- Wheel impact socket #17
- Ratchet wrench
- Torque wrench
- Vernier caliper
- Ball joint puller
- Wheel chock

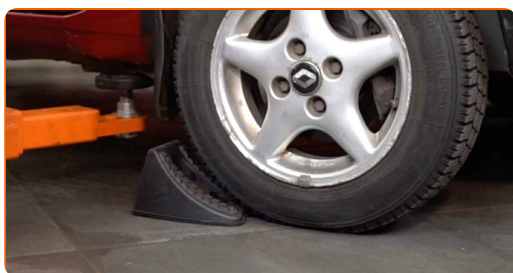
**Buy tools**

Replacement: track rod end – RENAULT Megane I Grandtour (KA). AUTODOC experts recommend:

- Replace tie rod ends in pairs.
- The replacement procedure is identical for the right and left tie rod ends.
- During the installation process, use only new bolts and nuts.
- Please note: all work on the car – RENAULT Megane I Grandtour (KA) – should be done with the engine switched off.

## CARRY OUT REPLACEMENT IN THE FOLLOWING ORDER:

**1** Secure the wheels with chocks.



**2** Loosen the wheel mounting bolts. Use wheel impact socket #17.



**3** Raise the front of the car and secure on supports.

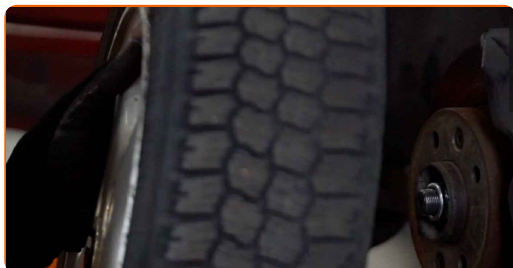
**4** Unscrew the wheel bolts.



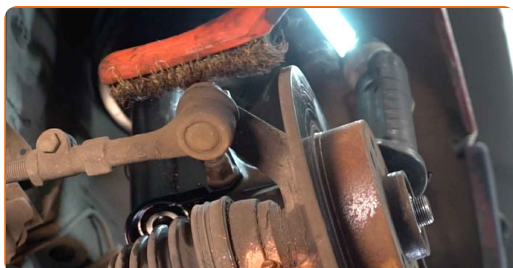
**AUTODOC recommends:**

- Important! Hold the wheel while unscrewing the fastening bolts. RENAULT Megane I Grandtour (KA)

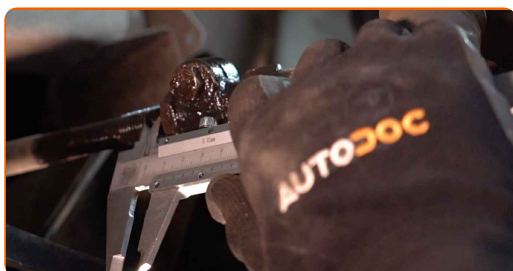
**5** Remove the wheel.



**6** Clean the fastener connecting the tie rod end to the steering knuckle. Use a wire brush. Use WD-40 spray.



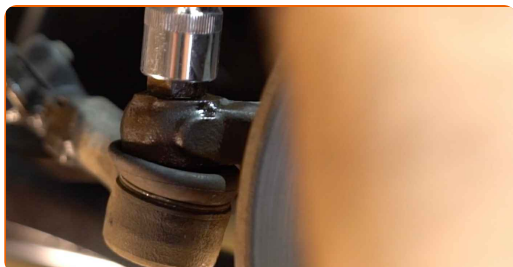
- 7 When deinstalling, mark or measure the precise position of the ball joint on the track rod, or count the number of turns in order to prevent misalignment afterward. Use a vernier caliper.



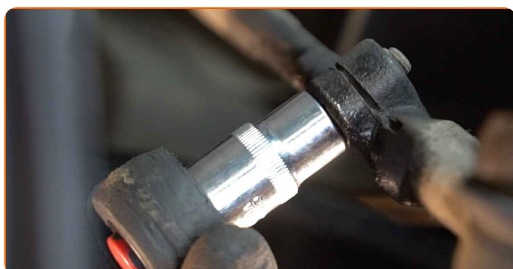
- 8 Loosen the lock nut securing the tie rod end to the tie rod. Use a combination spanner #21. Use a combination spanner #22.



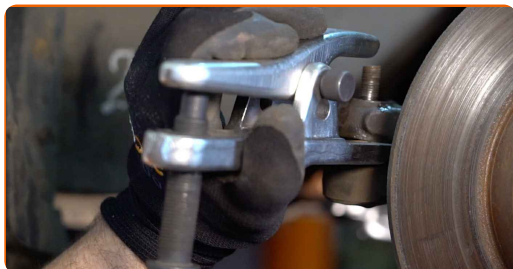
- 9 Unscrew the end fastening nut to the steering knuckle. Use a drive socket #17. Use a ratchet wrench.



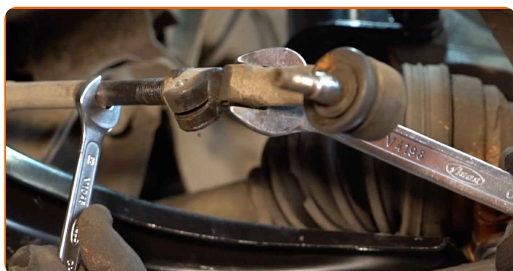
- 10 Loosen the fastener connecting the tie rod end to the tie rod. Use a drive socket #13. Use a ratchet wrench.



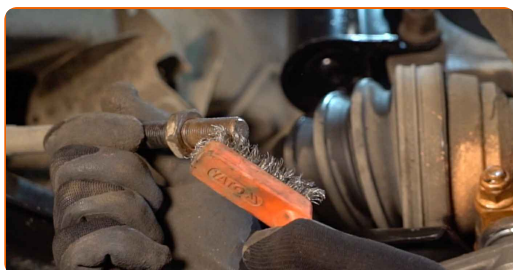
**11** Disconnect the tie rod end from the steering knuckle. Use a ball joint puller.



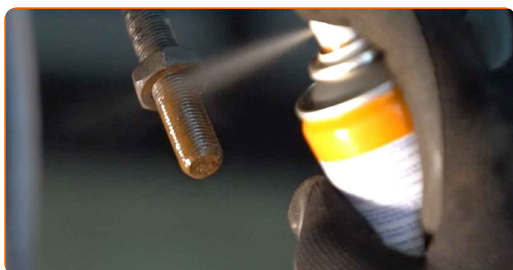
**12** Screw the end out of the tie rod. Use a combination spanner #13. Use a combination spanner #21.



**13** Clean the mounting seats of the tie rod end. Use a wire brush. Use WD-40 spray.



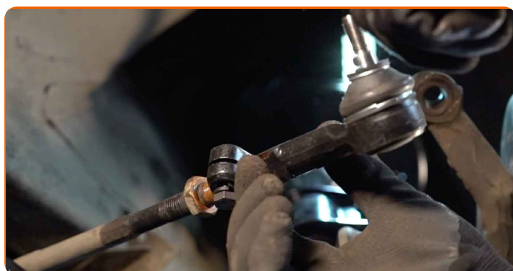
**14** Treat the threaded part of the tie rod. Use copper grease.





15

Screw on a new tie rod end.

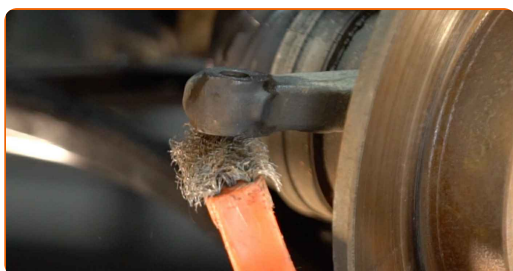


Replacement: track rod end – RENAULT Megane I Grandtour (KA). AUTODOC recommends:

- While installing the steering rod end remember to make the same number of turns or to leave the same length of thread showing as per your measurements.

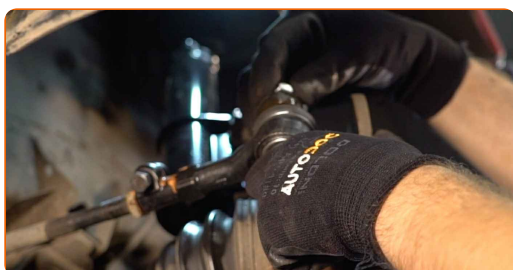
16

Clean the mounting seats of the tie rod end. Use a wire brush. Use WD-40 spray.



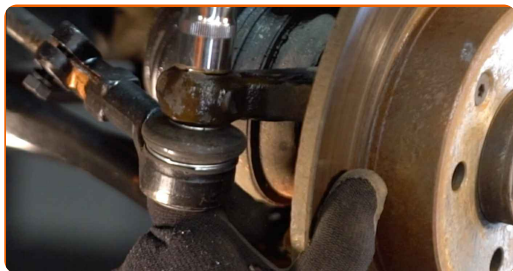
17

Connect the tie rod end to the steering knuckle.





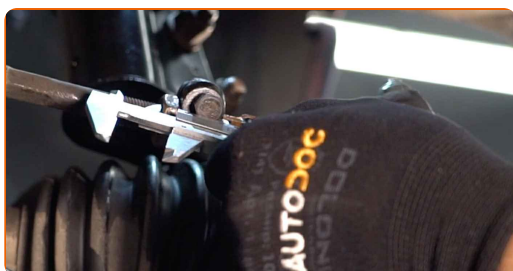
**18** Screw on the fastening nut that connects the tie rod end to the steering knuckle. Use a drive socket #17.



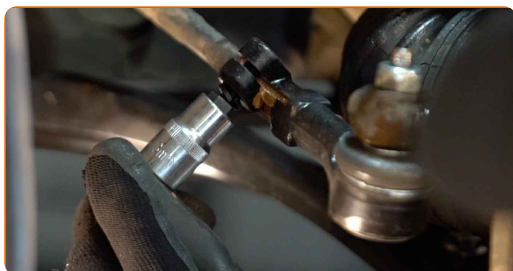
**19** Screw on the tie rod end jam nut. Use a combination spanner #21. Use a combination spanner #22.



**20** When deinstalling, mark or measure the precise position of the ball joint on the track rod, or count the number of turns in order to prevent misalignment afterward. Use a vernier caliper.

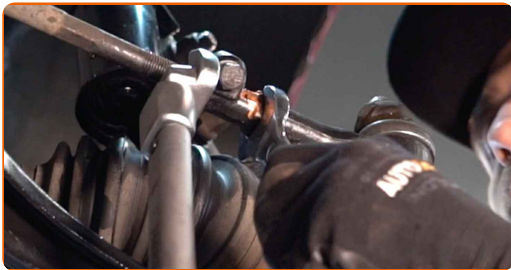


**21** Screw on the fastener connecting the tie rod end to the tie rod. Use a drive socket #13. Use a ratchet wrench.



**22**

Tighten the tie rod end locknut. Use a combination spanner #21. Use a combination spanner #22. Use a torque wrench. Tighten it to 53 nm torque.



**23**

Tighten the fastening nut connecting the tie rod end to the steering knuckle. Use a drive socket #18. Use a torque wrench. Tighten it to 40 nm torque.



**24**

Treat the fastener connecting the tie rod end to the steering knuckle. Use copper grease.



**25**

Treat the surface where the brake disc contacts the wheel rim. Use copper grease.

**26**

Clean the brake disk surface. Use a brake cleaner.

**AUTODOC recommends:**

- Replacement: track rod end – RENAULT Megane I Grandtour (KA). After applying the spray, wait a few minutes.

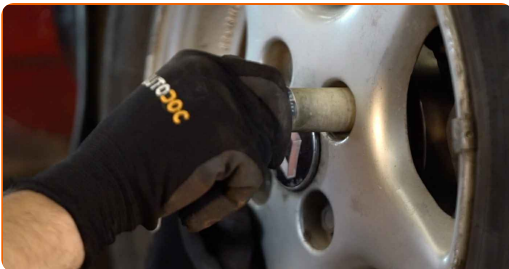
**27** Install the wheel.



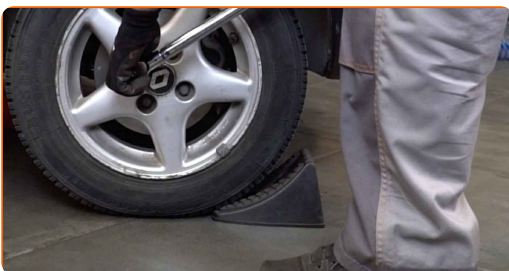
Replacement: track rod end – RENAULT Megane I Grandtour (KA). Tip from AUTODOC:

- To avoid injury, hold up the wheel when screwing in the fastening bolts.

**28** Screw in the wheel bolts. Use wheel impact socket #17.



**29** Lower the car and working in a cross order, tighten the wheel bolts. Use a torque wrench. Tighten it to 90 nm torque.

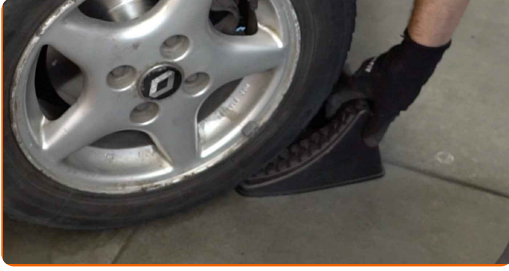


Replacement: track rod end – RENAULT Megane I Grandtour (KA). Tip from AUTODOC experts:

- Check and adjust wheel alignment if necessary.

30

Remove the jacks and chocks.



**WELL DONE!** 

**VIEW MORE TUTORIALS**

# AUTODOC – TOP QUALITY AND AFFORDABLE CAR PARTS ONLINE

**AUTODOC MOBILE APP: GREAT DEALS AND CONVENIENT SHOPPING**



**+ AUTODOC**

GET IT ON  
**Google Play**

Download on the  
**App Store**

**Download**

**A GREAT SELECTION OF SPARE PARTS FOR YOUR CAR**

**TRACK ROD END: A WIDE SELECTION**

## **DISCLAIMER:**

The document contains only general recommendations that may be useful for you when you perform repair or replacement work. AUTODOC shall not be liable for any loss, injury, damage of property occurring in the repair or replacement process due to incorrect use or misinterpretation of the provided information.

AUTODOC shall not be liable for any possible mistakes and uncertainties in this guide. The information provided is for information purposes only and cannot replace advice from specialists.

AUTODOC shall not be liable for incorrect or hazardous usage of equipment, tools and car parts. AUTODOC strongly recommends to be careful and observe the safety rules when performing repair or replacement works. Remember: usage of low quality auto parts does not guarantee you the appropriate level of road safety.

© Copyright 2022 – All the contents of this website, in particular texts, photographs and graphics, are protected by copyright. All rights, including reproduction, publication, editing and translation rights, are reserved by AUTODOC GmbH.