



How to change
windscreen washer
pump on **RENAULT**
Master II
Platform/Chassis –
replacement guide

SIMILAR VIDEO TUTORIAL



This video shows the replacement procedure of a similar car part on another vehicle

Important!

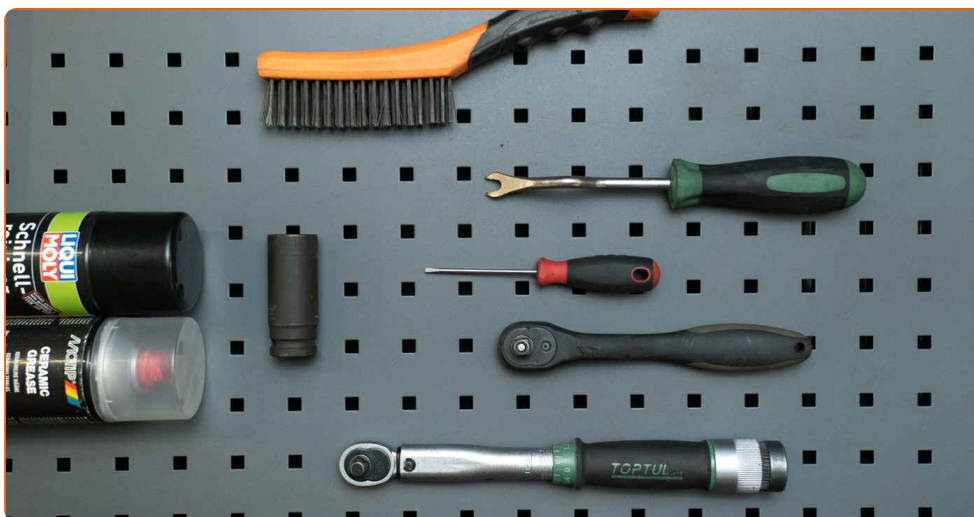
This replacement procedure can be used for:

RENAULT MASTER II Platform/Chassis (ED/HD/UD) 2.5 D, RENAULT MASTER II Platform/Chassis (ED/HD/UD) 2.8 dTi, RENAULT MASTER II Platform/Chassis (ED/HD/UD) 2.2 dCi 90, RENAULT MASTER II Platform/Chassis (ED/HD/UD) 2.5 dCi 120

The steps may slightly vary depending on the car design.

This tutorial was created based on the replacement procedure for a similar car part on: RENAULT MASTER II Box (FD) 2.2 dCi 90

REPLACEMENT: WINDSCREEN WASHER PUMP – RENAULT MASTER II PLATFORM/CHASSIS. TOOLS YOU MIGHT NEED:



- Wire brush
- All-purpose cleaning spray
- Electronic spray
- Ceramic grease
- Torque wrench
- 24 mm wheel impact socket
- Ratchet wrench or power tool for removal/installation of threaded fasteners
- Tommy bar
- Flat screwdriver
- A clip removal tool
- Fluid drain pan
- Car lift or jack with jack stands, and wheel chocks

Buy tools

Replacement: windscreen washer pump – RENAULT Master II Platform/Chassis. Tip from AUTODOC experts:

- All the work should be carried out with the ignition switched off.

REPLACEMENT: WINDSCREEN WASHER PUMP – RENAULT MASTER II PLATFORM/CHASSIS. TAKE THE FOLLOWING STEPS:

- 1 Secure the wheels with chocks.



- 2 Loosen the wheel fasteners. Use a 24 mm wheel impact socket. Use a tommy bar.



- 3 Raise the vehicle.

Warning!

- If you are using a jack, make sure the car is parked on a hard, flat surface.
- Make sure to additionally secure the car with jack stands.

4

Unscrew the wheel fasteners.



Replacement: windscreen washer pump – RENAULT Master II
Platform/Chassis. Tip:

- To avoid injury, hold up the wheel when unscrewing the fasteners.

5

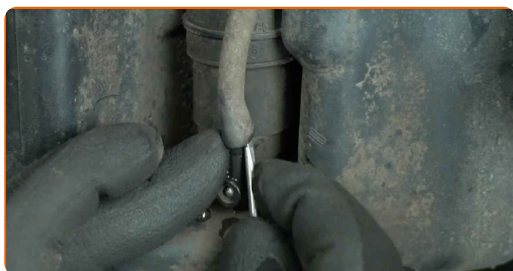
Remove the wheel.



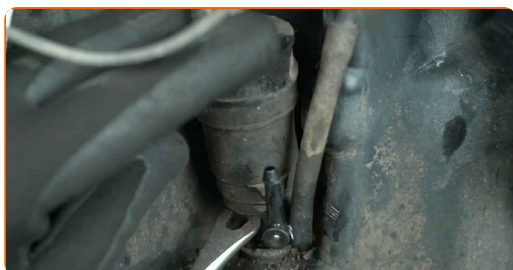
- 6 Place the fluid drain pan under the windscreen washer pump.



- 7 Detach the windscreen washer hose. Use a slotted screwdriver.



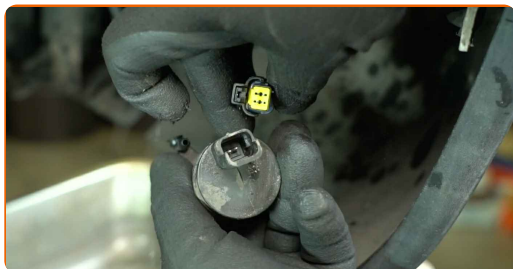
- 8 Remove the windscreen washer pump. Use a clip removal tool.



- 9 Remove the washer pump seal.



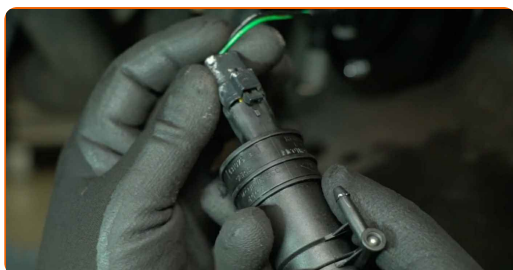
- 10 Detach the connector from the windscreen washer pump.



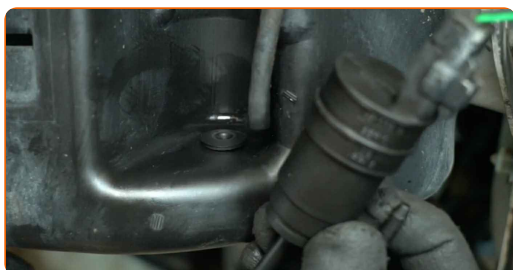
- 11 Treat the windscreen washer pump connector. Use an electronic spray.



- 12 Attach the connector to the new windscreen washer pump.



- 13 Install a new washer pump seal.



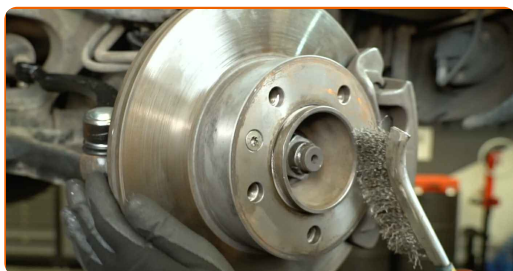
- 14 Install a new windscreen washer pump.



- 15 Attach the windscreen washer hose to the new windscreen washer pump.



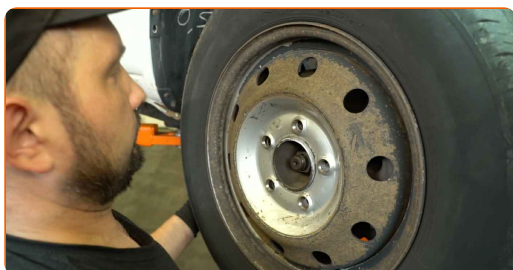
- 16 Clean the wheel rim mounting seat. Use a wire brush. Use an all-purpose cleaning spray.



- 17 Treat the brake disc surface that contacts the wheel rim. Use ceramic grease.



- 18 Install the wheel.

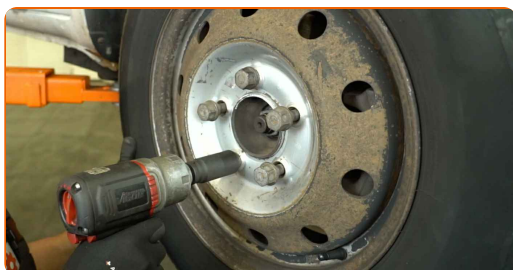


Replacement: windscreen washer pump – RENAULT Master II Platform/Chassis. AUTODOC recommends:

- To avoid injury, hold up the wheel when screwing in the fasteners.

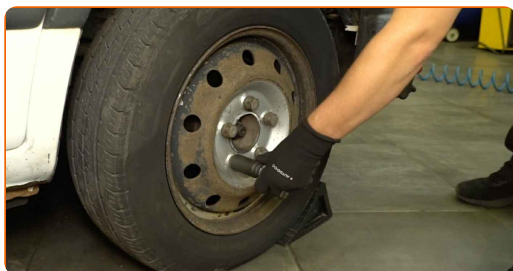
19

Screw in the wheel fasteners. Use a 24 mm wheel impact socket. Use a ratchet wrench.



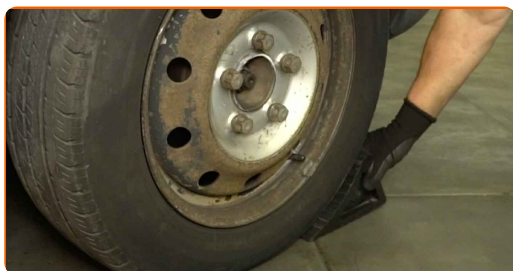
20

Lower the car and tighten the wheel fasteners in a criss-cross pattern. Use a 24 mm wheel impact socket. Use a torque wrench. Tightening torque: 172 N·m.



21

Remove the jack and wheel chocks.

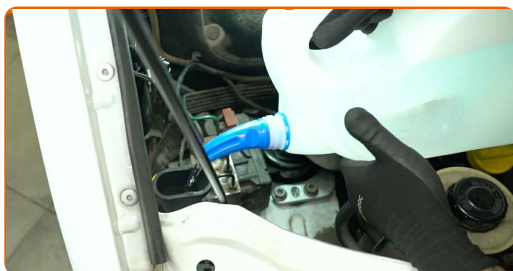


22

Open the bonnet.

23

Pour new washer fluid into the windscreen washer reservoir.

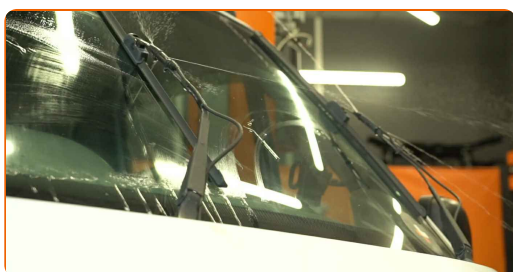


24

Close the bonnet.

25

Check that the new component is working.



WELL DONE! 

VIEW MORE TUTORIALS

AUTODOC – TOP QUALITY AND AFFORDABLE CAR PARTS ONLINE

AUTODOC MOBILE APP: GREAT DEALS AND CONVENIENT SHOPPING



+ AUTODOC

GET IT ON Google Play

Download on the App Store

Download

A GREAT SELECTION OF SPARE PARTS FOR YOUR CAR

WINDSCREEN WASHER PUMP: A WIDE SELECTION

i DISCLAIMER:

The document contains only general recommendations that may be useful for you when you perform repair or replacement work. AUTODOC shall not be liable for any loss, injury, damage of property occurring in the repair or replacement process due to incorrect use or misinterpretation of the provided information.

AUTODOC shall not be liable for any possible mistakes and uncertainties in this guide. The information provided is for information purposes only and cannot replace advice from specialists.

AUTODOC shall not be liable for incorrect or hazardous usage of equipment, tools and car parts. AUTODOC strongly recommends to be careful and observe the safety rules when performing repair or replacement works. Remember: usage of low quality auto parts does not guarantee you the appropriate level of road safety.

© Copyright 2025 – All the contents of this website, in particular texts, photographs and graphics, are protected by copyright. All rights, including reproduction, publication, editing and translation rights, are reserved by AUTODOC SE.