



How to change rear light
on **RENAULT Master II**
Minibus – replacement
guide

SIMILAR VIDEO TUTORIAL



This video shows the replacement procedure of a similar car part on another vehicle

Important!

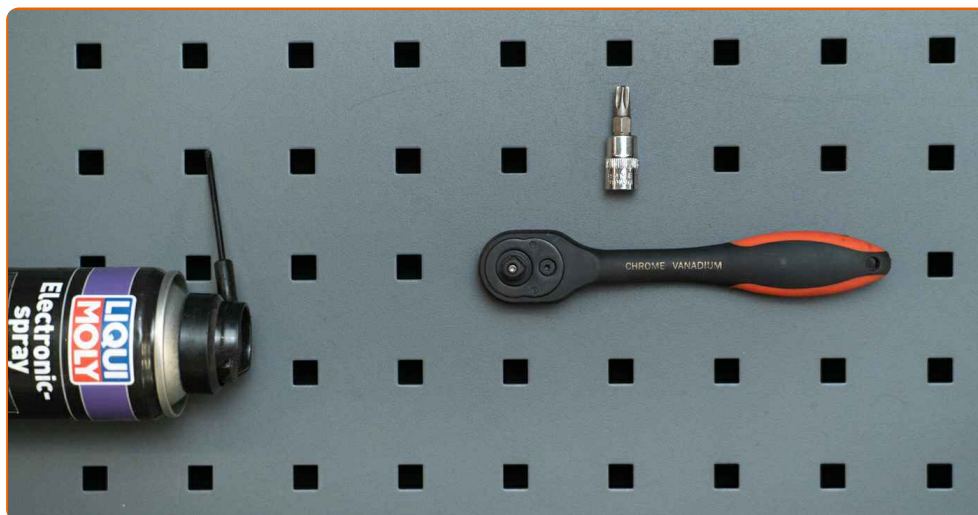
This replacement procedure can be used for:

RENAULT MASTER II Bus (JD) 2.5 D, RENAULT MASTER II Bus (JD) 2.8 dTi, RENAULT MASTER II Bus (JD) 2.2 dCi 90, RENAULT MASTER II Bus (JD) 1.9 dTi, RENAULT MASTER II Bus (JD) 2.5 dCi 120, RENAULT MASTER II Bus (JD) 1.9 dCi 80

The steps may slightly vary depending on the car design.

This tutorial was created based on the replacement procedure for a similar car part on: RENAULT MASTER II Box (FD) 2.2 dCi 90

REPLACEMENT: REAR LIGHT – RENAULT MASTER II MINIBUS. TOOLS YOU MIGHT NEED:



- Electronic spray
- T30 Torx bit
- Ratchet screwdriver

[Buy tools](#)

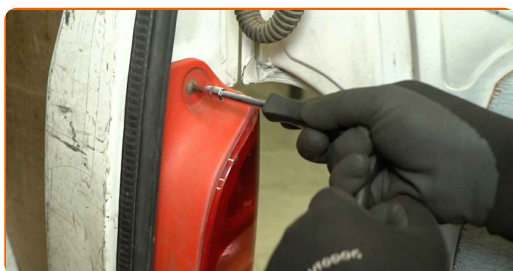
Replacement: rear light – RENAULT Master II Minibus. AUTODOC recommends:

- Replace both rear lights at the same time.
- All the work should be carried out with the ignition switched off.

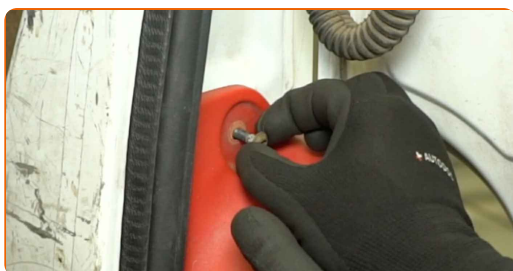
REPLACEMENT: REAR LIGHT – RENAULT MASTER II MINIBUS. RECOMMENDED SEQUENCE OF STEPS:

1 Open the rear door.

2 Unscrew the fastener connecting the rear light to the car body. Use a T30 Torx bit. Use a ratchet screwdriver.

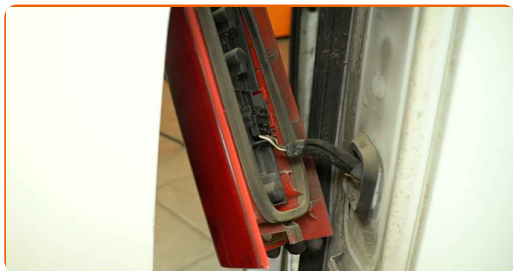


3 Remove the fastening bolt.



4

Remove the rear light.

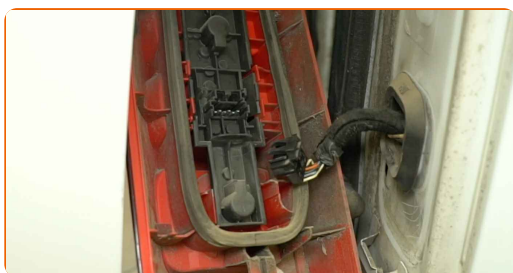


Replacement: rear light – RENAULT Master II Minibus. Professionals recommend:

- Do not apply excessive force when removing the part. Otherwise you may damage it.

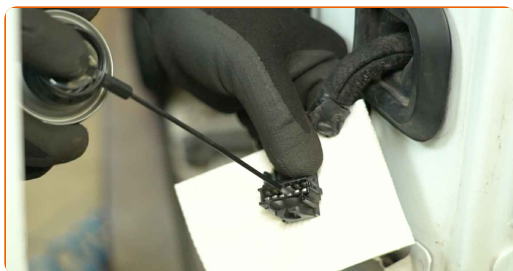
5

Detach the rear light connector.



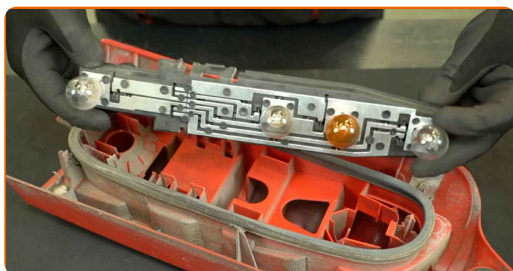
6

Treat the rear light connector. Use an electronic spray.



7

Remove the bulb holder together with the bulbs.



Replacement: rear light – RENAULT Master II Minibus. AUTODOC experts recommend:

- Do not apply excessive force when removing the part. Otherwise you may damage it.
- Avoid touching the bulb glass with bare hands. The finger marks left on it may cause failure.

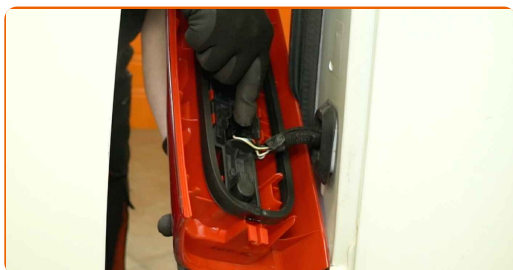
8

Install the bulb holder together with the bulbs.



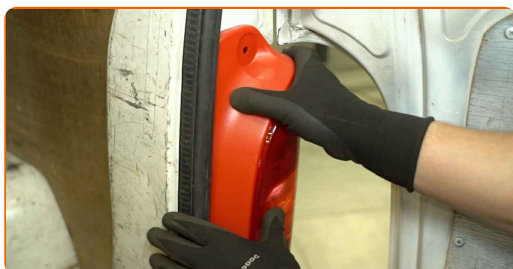
9

Attach the rear light connector.

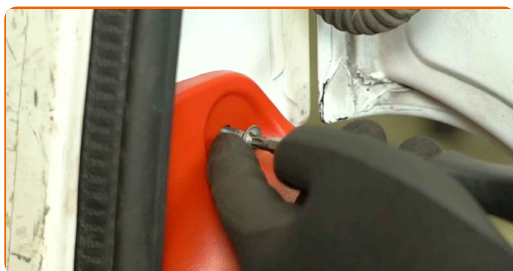


10

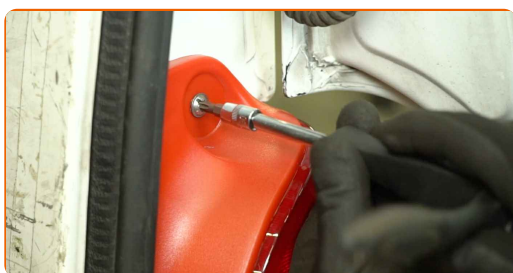
Install the new rear light.



11 Install the fastening bolt.

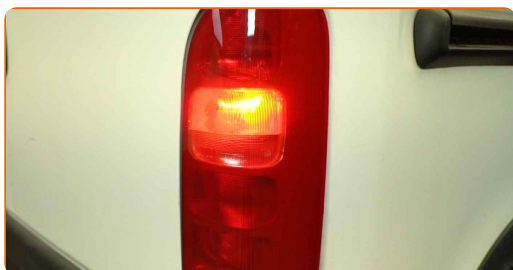


12 Tighten the fastener connecting the rear light to the car body. Use a T30 Torx bit. Use a ratchet screwdriver.



13 Close the rear door.

14 Check that the new component is working.



WELL DONE! 👍

[VIEW MORE TUTORIALS](#)

AUTODOC – TOP QUALITY AND AFFORDABLE CAR PARTS ONLINE

AUTODOC MOBILE APP: GREAT DEALS AND CONVENIENT SHOPPING





GET IT ON
Google Play

Download on the
App Store

Download

A GREAT SELECTION OF SPARE PARTS FOR YOUR CAR

REAR LIGHT: A WIDE SELECTION

DISCLAIMER:

The document contains only general recommendations that may be useful for you when you perform repair or replacement work. AUTODOC shall not be liable for any loss, injury, damage of property occurring in the repair or replacement process due to incorrect use or misinterpretation of the provided information.

AUTODOC shall not be liable for any possible mistakes and uncertainties in this guide. The information provided is for information purposes only and cannot replace advice from specialists.

AUTODOC shall not be liable for incorrect or hazardous usage of equipment, tools and car parts. AUTODOC strongly recommends to be careful and observe the safety rules when performing repair or replacement works. Remember: usage of low quality auto parts does not guarantee you the appropriate level of road safety.

© Copyright 2025 – All the contents of this website, in particular texts, photographs and graphics, are protected by copyright. All rights, including reproduction, publication, editing and translation rights, are reserved by AUTODOC SE.