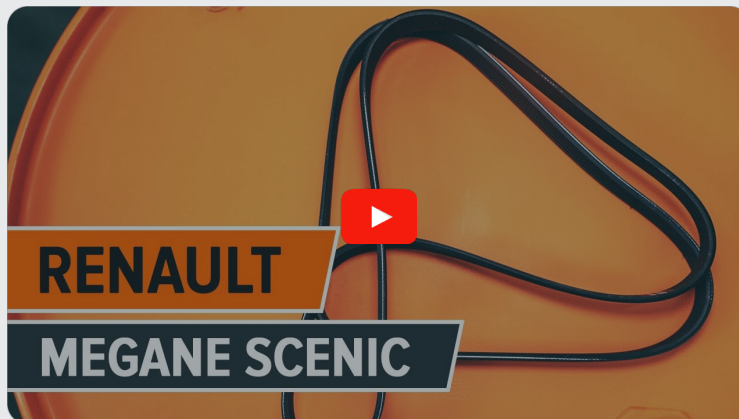




How to change  
serpentine belt on  
**RENAULT Logan Express**  
**(US\_)** – replacement  
guide

## SIMILAR VIDEO TUTORIAL



This video shows the replacement procedure of a similar car part on another vehicle

### **i Important!**

This replacement procedure can be used for:  
RENAULT Logan Express (US\_) 1.6

The steps may slightly vary depending on the car design.

This tutorial was created based on the replacement procedure for a similar car part on: RENAULT Megane Scenic (JA) 1.6 16V

REPLACEMENT: SERPENTINE BELT – RENAULT LOGAN EXPRESS (US\_). TOOLS YOU NEED:



- Torque wrench
- Combination spanner #13
- Drive socket # 18
- Wheel impact socket #19
- Ratchet wrench
- Phillips Screwdriver
- Fender cover
- Wheel chock

[Buy tools](#)

**AUTODOC recommends:**

- Please note: all work on the car – RENAULT Logan Express (US\_) – should be done with the engine switched off.

**CARRY OUT REPLACEMENT IN THE FOLLOWING ORDER:**

**1** Open the bonnet.

**2** Use a fender protection cover to prevent damaging paintwork and plastic parts of the car.

**3** Secure the wheels with chocks. Loosen the wheel mounting bolts. Use wheel impact socket #19.



**4** Raise the car.

**Replacement: serpentine belt – RENAULT Logan Express (US\_). Tip from AUTODOC:**

- If you are using a jack, make sure it rests on a flat surface without any unevenness.
- Be sure to additionally secure the car with jack stands.

5

Unscrew the wheel bolts.

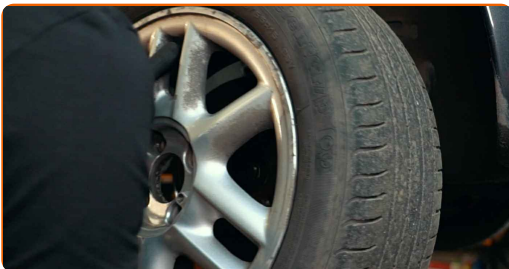


AUTODOC recommends:

- Warning! To avoid injury, hold the wheel while unscrewing the fastening bolts.  
RENAULT Logan Express (US\_)

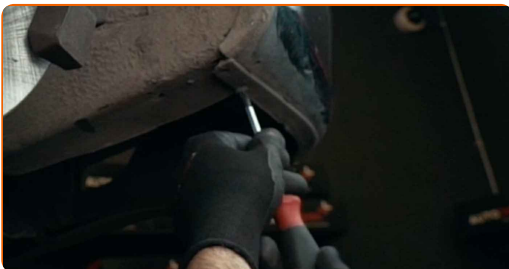
6

Remove the wheel.



7

Unscrew and remove the wheel arch cover fasteners. Use a Phillips screwdriver.



8

Remove the wheel arch cover.



**9** Pull aside the V-ribbed belt tensioner pulley. Use a combination spanner #13.



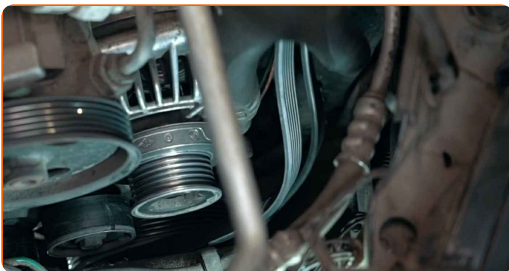
**10** Remove the V-ribbed belt.



Replacement: serpentine belt – RENAULT Logan Express (US\_). Professionals recommend:

- Check the condition of the tensioner pulley and idler pulley. Replace them if necessary.

**11** Install the V-ribbed belt.



AUTODOC recommends:

- Make sure that the V-ribbed belt fits all pulleys snugly.

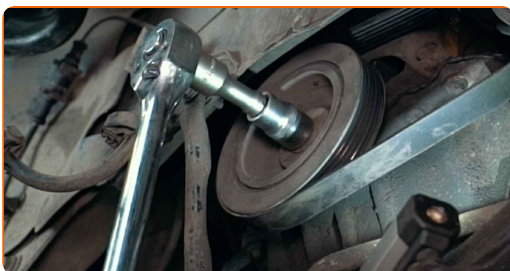
**12** Pull aside the V-ribbed belt tensioner pulley. Use a combination spanner #13.



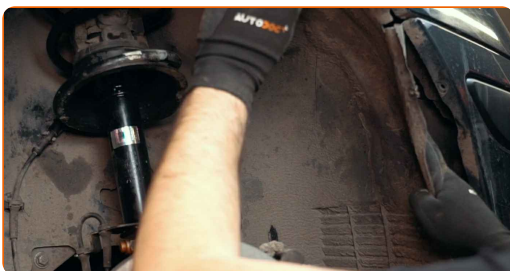
**13** Place the V-ribbed belt on the tensioner pulley. Return the tensioner pulley to its initial position.



**14** Rotate the crankshaft several times to check whether the new V-ribbed belt is working correctly. Use a drive socket #18. Use a ratchet wrench.



**15** Install the wheel arch cover to its mounting seat.



16

Install and tighten the wheel arch cover fasteners. Use a combination spanner #13.



17

Install the wheel.



### AUTODOC recommends:

- Important! Hold the wheel while screwing in the fastening bolts. RENAULT Logan Express (US\_)

18

Screw in the wheel bolts. Use wheel impact socket #19.





- 19 Lower the car and working in a cross order, tighten the wheel bolts. Use wheel impact socket #19. Use a torque wrench. Tighten it to 90 Nm torque.



- 20 Remove the jacks and chocks.



- 21 Run the engine for a few minutes. This is necessary in order to make sure that the component operates properly.

- 22 Shut off the engine.

- 23 Remove the fender protection cover.

- 24 Close the hood.

**WELL DONE!** 

[VIEW MORE TUTORIALS](#)

## AUTODOC – TOP QUALITY AND AFFORDABLE CAR PARTS ONLINE

**AUTODOC MOBILE APP: GREAT DEALS AND CONVENIENT SHOPPING**

**AUTODOC**

GET IT ON  
 **Google Play**

Download on the  
 **App Store**

**Download**

**A GREAT SELECTION OF SPARE PARTS FOR YOUR CAR**

**SERPENTINE BELT: A WIDE SELECTION**

### **DISCLAIMER:**

The document contains only general recommendations that may be useful for you when you perform repair or replacement work. AUTODOC shall not be liable for any loss, injury, damage of property occurring in the repair or replacement process due to incorrect use or misinterpretation of the provided information.

AUTODOC shall not be liable for any possible mistakes and uncertainties in this guide. The information provided is for information purposes only and cannot replace advice from specialists.

AUTODOC shall not be liable for incorrect or hazardous usage of equipment, tools and car parts. AUTODOC strongly recommends to be careful and observe the safety rules when performing repair or replacement works. Remember: usage of low quality auto parts does not guarantee you the appropriate level of road safety.

© Copyright 2022 – All the contents of this website, in particular texts, photographs and graphics, are protected by copyright. All rights, including reproduction, publication, editing and translation rights, are reserved by AUTODOC GmbH.