



How to change front
window regulator on
PEUGEOT PARTNER
Tepee – replacement
guide

SIMILAR VIDEO TUTORIAL



This video shows the replacement procedure of a similar car part on another vehicle

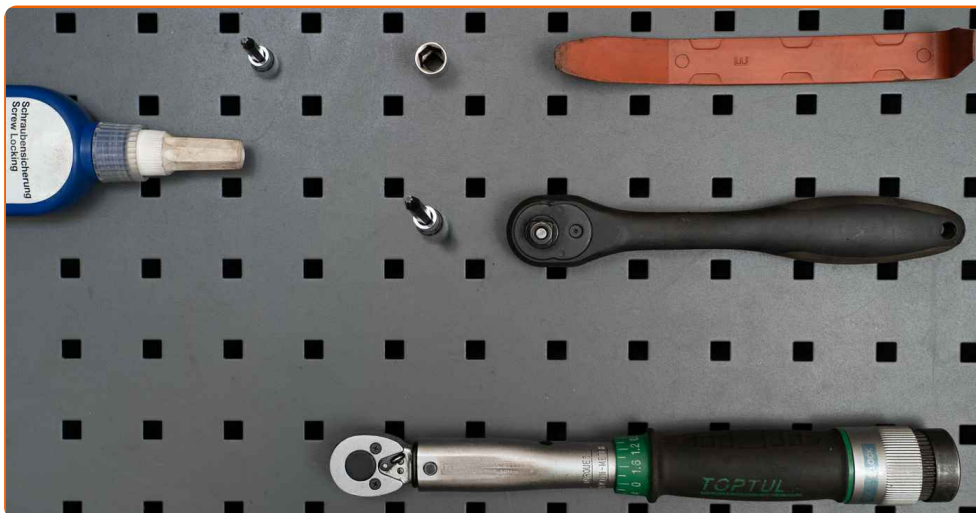
Important!

This replacement procedure can be used for:
 PEUGEOT PARTNER Tepee 1.6 HDi 90, PEUGEOT PARTNER Tepee 1.6, PEUGEOT PARTNER Tepee 1.6 HDi 16V, PEUGEOT PARTNER Tepee 1.6 HDi

The steps may slightly vary depending on the car design.

This tutorial was created based on the replacement procedure for a similar car part on: CITROËN Berlingo / Berlingo First Van (M_) 1.9 D

REPLACEMENT: WINDOW REGULATOR – PEUGEOT PARTNER TEPEE. LIST OF THE TOOLS YOU'LL NEED:



- Threadlocker
- Torque wrench
- Drive socket # 10
- Torx bit T20
- Torx bit T30
- Ratchet wrench
- Plastic trim tool

Buy tools

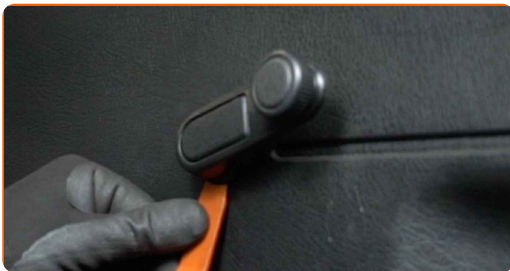
Replacement: window regulator – PEUGEOT PARTNER Tepee. Tip from AUTODOC:

- All work should be done with the engine stopped.

REPLACEMENT: WINDOW REGULATOR – PEUGEOT PARTNER TEPEE. USE THE FOLLOWING PROCEDURE:

1 Open the car door.

2 Detach the window regulator handle. Use a plastic trim tool.



AUTODOC recommends:

- Replacement: window regulator – PEUGEOT PARTNER Tepee. Do not use excessive force when removing the part as this may damage it.

3 Detach the door handle trim panel. Use a plastic trim tool.

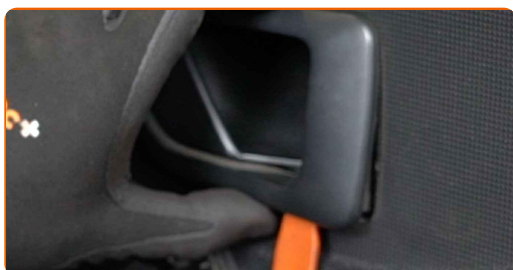


AUTODOC recommends:

- Do not apply excessive force when removing the part. Otherwise you may damage it.

4

Remove the door handle frame. Use a plastic trim tool.



AUTODOC recommends:

- Replacement: window regulator – PEUGEOT PARTNER Tepee. To avoid damaging the part when removing it, do not use excessive force.

5

Unscrew the lower fasteners of the door card. Use Torx T20.



6

Unscrew the door handle fastener. Use Torx T30.



7 Detach the door card.



AUTODOC recommends:

- Do not apply excessive force when removing the part. Otherwise you may damage it.

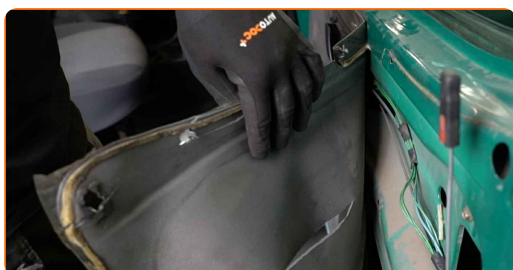
8 Remove the upper rubber seal.



9 Remove the door card.



10 Detach the door panel sound insulation.



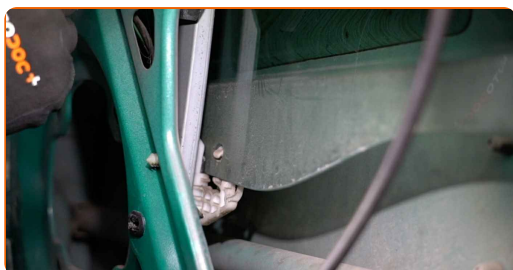
11 Remove the door handle.



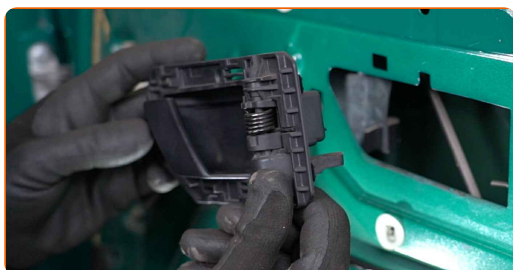
12 Attach the window regulator handle.



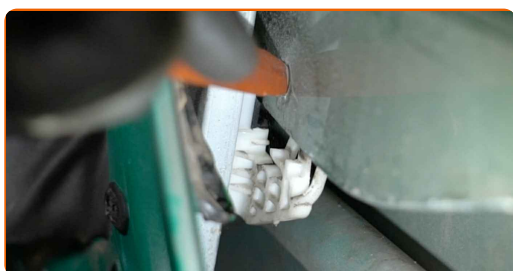
13 Lower the glass so that you can see the fasteners that connect it to the window regulator mechanism.



14 Detach the window regulator handle.

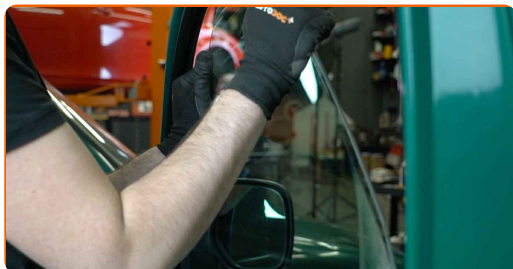


15 Detach the glass fasteners. Use a plastic trim tool.



16

Raise the glass a little and remove it.

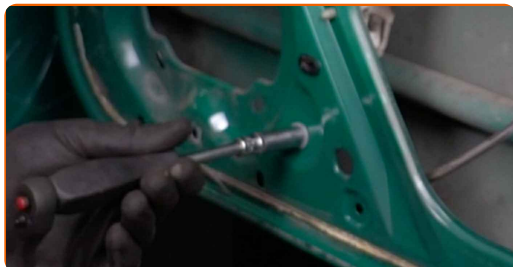


AUTODOC recommends:

- To avoid injury, hold the glass when raising it.
- Replacement: window regulator – PEUGEOT PARTNER Tepee. Do not use excessive force during installation. This may damage the part.

17

Unscrew the fasteners of the window regulator assembly. Use a drive socket #10. Use a ratchet wrench.

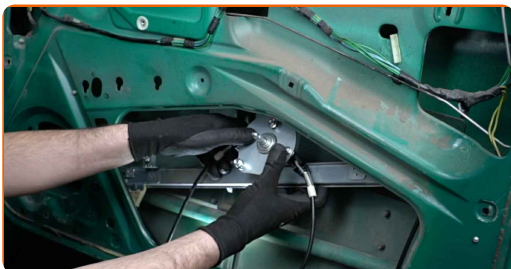


18

Remove the window regulator mechanism.



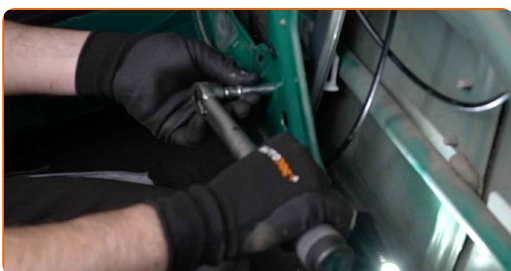
19 Install the new window regulator mechanism.



20 Treat the thread of the window regulator fasteners. Use threadlocker.



21 Tighten the fasteners of the window regulator assembly. Use a drive socket #10. Use a torque wrench. Tighten it to 12 Nm torque.



22 Lower the window glass and install it to its mounting seat in the window raiser mechanism.

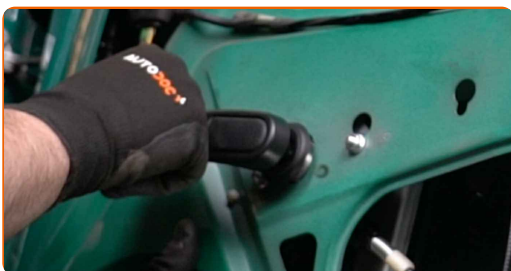


AUTODOC recommends:

- To avoid injury, hold the glass when lowering it.
- When installing, do not use excessive force to avoid damage to the part.

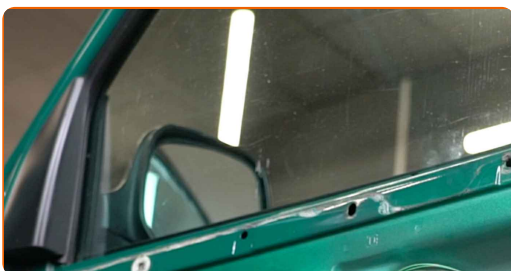
23

Attach the window regulator handle.



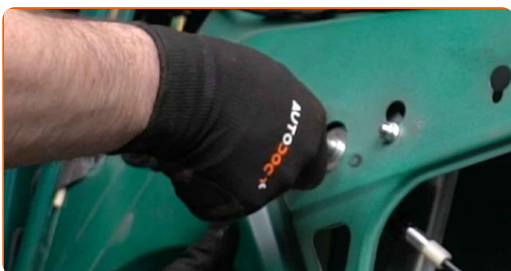
24

Lift the glass up fully.



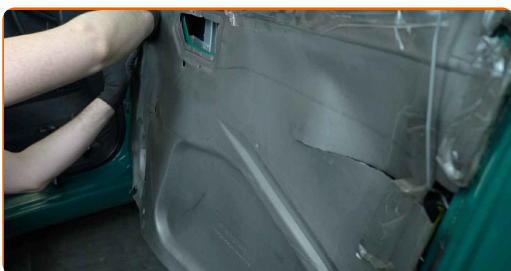
25

Detach the window regulator handle.



26

Attach the door panel sound insulation.



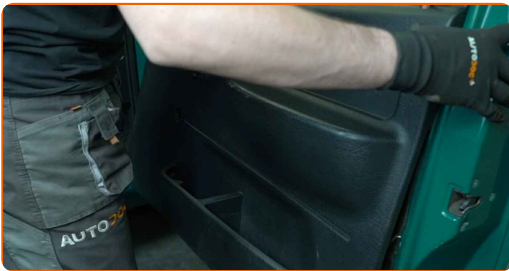
AUTODOC recommends:

- Check that the sound insulation fits snugly on the mounting seats.

27 Install the door handle.



28 Reinstall the door card. Make sure you hear a click indicating that it is locked in place.



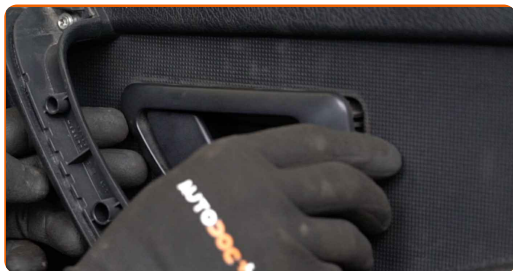
AUTODOC recommends:

- Replacement: window regulator – PEUGEOT PARTNER Tepee. To avoid damaging the part during installation, do not use excessive force.

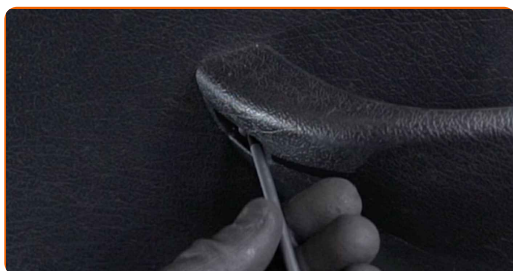
29 Tighten the door handle fastener. Use Torx T30.



30 Install the door handle frame.



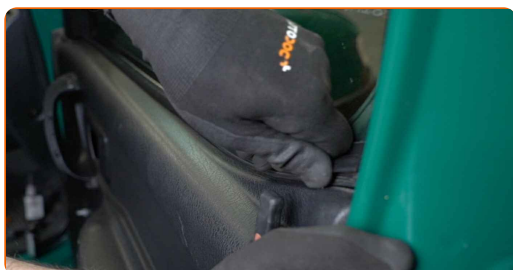
31 Screw in the lower fasteners of the door card. Use Torx T20.



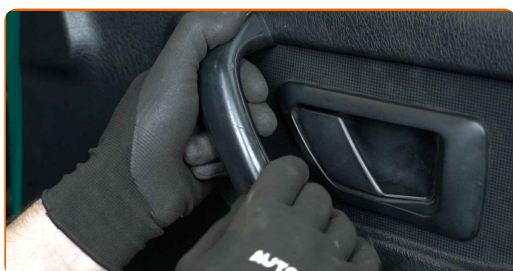
32 Attach the window regulator handle.



33 Install the upper rubber seal.



34 Attach the door handle trim panel.



35 Check that the window regulator works correctly.

36 Close the car door.

WELL DONE! 

VIEW MORE TUTORIALS

AUTODOC – TOP QUALITY AND AFFORDABLE CAR PARTS ONLINE

AUTODOC MOBILE APP: GREAT DEALS AND CONVENIENT SHOPPING



+ AUTODOC

GET IT ON
Google Play

Download on the
App Store

Download

A GREAT SELECTION OF SPARE PARTS FOR YOUR CAR

WINDOW REGULATOR: A WIDE SELECTION

DISCLAIMER:

The document contains only general recommendations that may be useful for you when you perform repair or replacement work. AUTODOC shall not be liable for any loss, injury, damage of property occurring in the repair or replacement process due to incorrect use or misinterpretation of the provided information.

AUTODOC shall not be liable for any possible mistakes and uncertainties in this guide. The information provided is for information purposes only and cannot replace advice from specialists.

AUTODOC shall not be liable for incorrect or hazardous usage of equipment, tools and car parts. AUTODOC strongly recommends to be careful and observe the safety rules when performing repair or replacement works. Remember: usage of low quality auto parts does not guarantee you the appropriate level of road safety.

© Copyright 2022 – All the contents of this website, in particular texts, photographs and graphics, are protected by copyright. All rights, including reproduction, publication, editing and translation rights, are reserved by AUTODOC GmbH.