



How to change rear  
wheel bearing on  
**PEUGEOT Partner Origin  
Combispac (G\_) –  
replacement guide**

## SIMILAR VIDEO TUTORIAL



This video shows the replacement procedure of a similar car part on another vehicle

### Important!

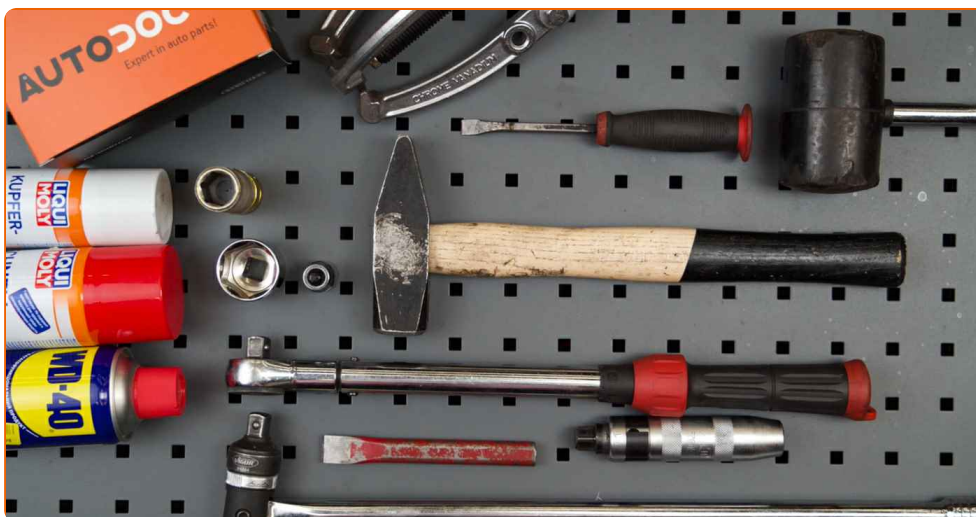
This replacement procedure can be used for:

PEUGEOT Partner Origin Combispac (G\_) 1.4, PEUGEOT Partner Origin Combispac (G\_) 1.6 HDi 75, PEUGEOT Partner Origin Combispac (G\_) 1.9 D

The steps may slightly vary depending on the car design.

This tutorial was created based on the replacement procedure for a similar car part on: CITROËN XSARA PICASSO (N68) 2.0 HDi

REPLACEMENT: WHEEL BEARING – PEUGEOT PARTNER ORIGIN COMBISPACE (G\_). LIST OF THE TOOLS YOU'LL NEED:



- Wire brush
- WD-40 spray
- All-purpose cleaning spray
- Copper grease
- Torx bit T30
- Drive socket # 32
- Drive socket # 34
- Wheel impact socket #19
- Torque wrench
- Flat chisel
- Hammer
- Tap wrench
- Impact screwdriver
- Rubber mallet
- 3-Arm Gear Puller
- Crow bar
- Wheel chock

**Buy tools**

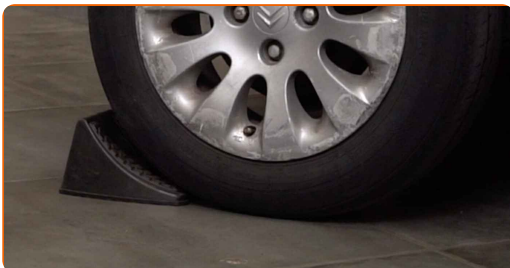
Replacement: wheel bearing – PEUGEOT Partner Origin Combispace (G\_).  
AUTODOC experts recommend:

- Do not re-use the bearing assembly of your PEUGEOT Partner Origin Combispace (G\_) car.
- The wheel hub bearing replacement procedure is identical for both wheels on the same axle.
- Warning! Shut down the engine before starting any work – PEUGEOT Partner Origin Combispace (G\_).

**CARRY OUT REPLACEMENT IN THE FOLLOWING ORDER:**

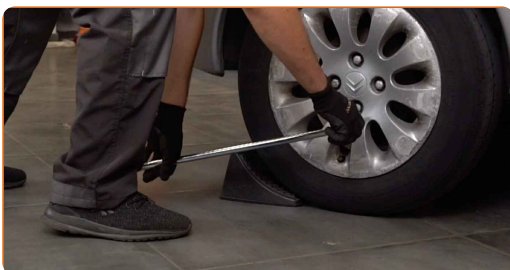
1

Secure the wheels with chocks.



2

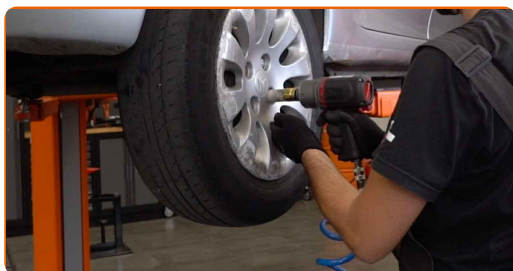
Loosen the wheel mounting bolts. Use wheel impact socket #19.



3

Raise the rear of the car and secure on supports.

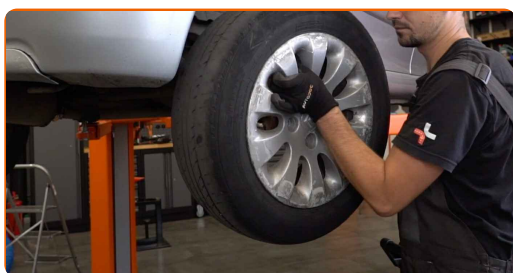
**4** Unscrew the wheel bolts.



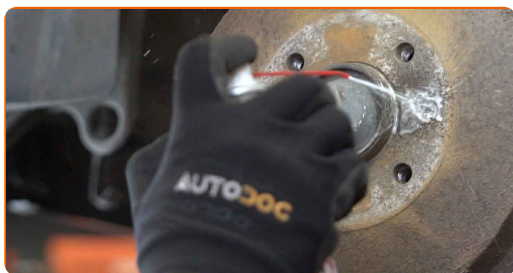
Replacement: wheel bearing – PEUGEOT Partner Origin Combispace (G\_). Tip:

- To avoid injury, hold up the wheel when unscrewing the bolts.

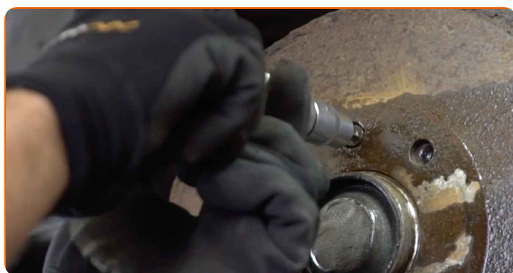
**5** Remove the wheel.



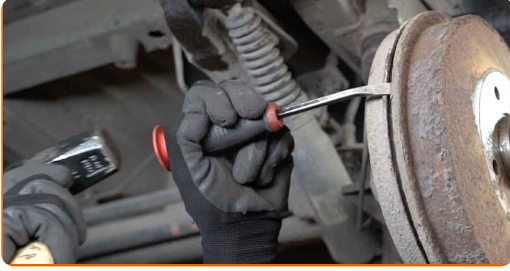
**6** Clean the brake drum. Use a wire brush. Use WD-40 spray.



**7** Unscrew the brake drum fastening. Use Torx T30. Use an impact screwdriver. Use a hammer.



**8** Remove the brake drum. Use a crowbar. Use a hammer.



Replacement: wheel bearing – PEUGEOT Partner Origin Combispace (G\_).  
AUTODOC recommends:

- Examine the brake drum. Replace it if necessary.

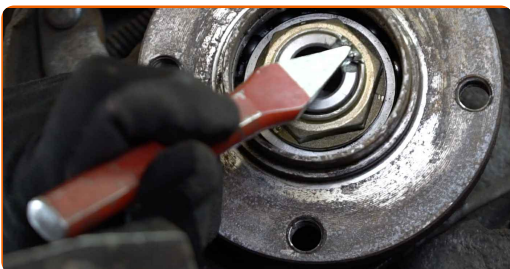
**9** Remove the hub bearing protection cap. Use a crowbar. Use a hammer.



Replacement: wheel bearing – PEUGEOT Partner Origin Combispace (G\_). Tip  
from AUTODOC:

- Some cars are not equipped with wheel hub caps.

**10** Unstake the wheel hub retaining nut. Use a flat metal-working chisel. Use a hammer.



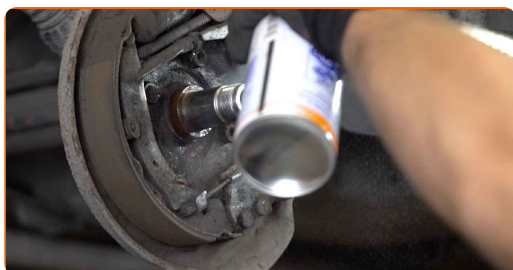
**11** Unscrew the wheel hub axle nut. Use a drive socket #34. Use a tap wrench.



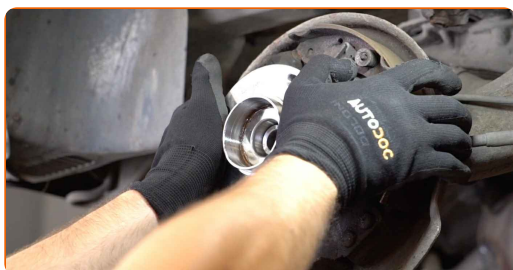
**12** Remove the hub and the bearing together, since they are a sealed unit. Use 3-Arm Gear Puller.



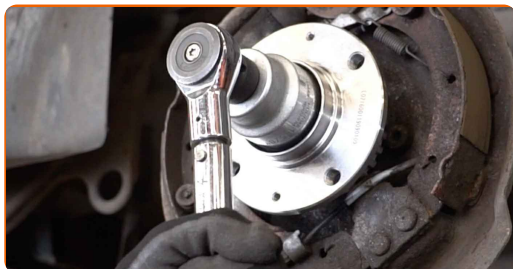
**13** Clean the hub bearing mounting seat. Use all-purpose cleaning spray.



**14** Install the new wheel hub with a bearing.



**15** Tighten the hub. Use a drive socket #32. Use a torque wrench. Tighten it to 225 Nm torque.



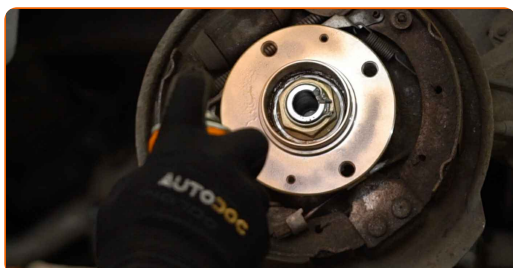
Replacement: wheel bearing – PEUGEOT Partner Origin Combispac (G\_). Tip from AUTODOC experts:

- The wheel bearing unit must not tilt on the axle pin.

**16** Restake the wheel hub retaining nut. Use a flat metal-working chisel. Use a hammer.

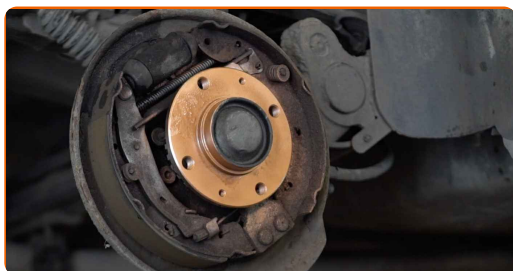


**17** Apply special grease to the bearing assembly mounting seat. Use copper grease.

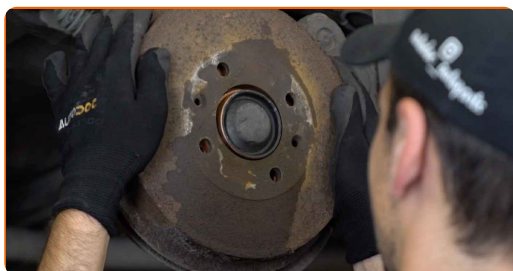




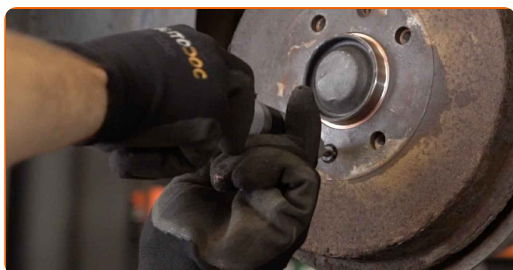
**18** Install the hub bearing protection cap. Use a rubber mallet.



**19** Install the brake drum and fasten it.

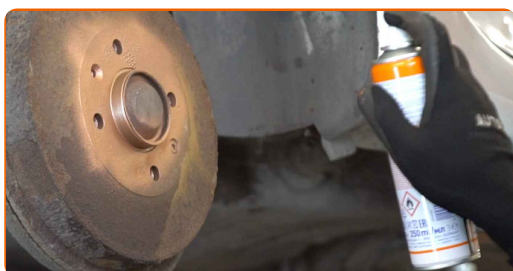


**20** Tighten the brake drum fasteners. Use Torx T30. Use a torque wrench. Tighten it to 10 Nm torque.



**21** Clean the wheel rim mounting seat. Use a wire brush.

**22** Treat the surface where the wheel rim contacts the brake drum. Use copper grease.



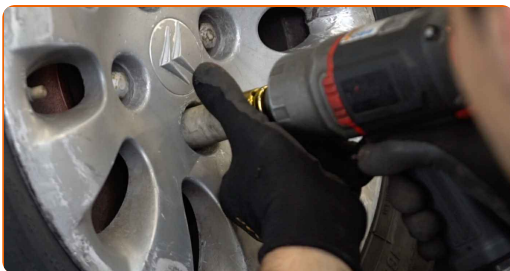
**23** Install the wheel.



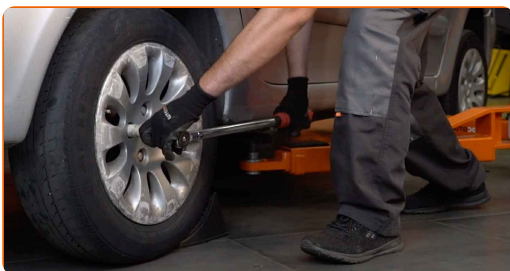
Replacement: wheel bearing – PEUGEOT Partner Origin Combispace (G\_).  
Professionals recommend:

- To avoid injury, hold up the wheel when screwing in the fastening bolts.

**24** Screw in the wheel bolts. Use wheel impact socket #19.



**25** Lower the car and working in a cross order, tighten the wheel bolts. Use a torque wrench. Tighten it to 100 nm torque.



26

Remove the jacks and chocks.



**WELL DONE!** 

**VIEW MORE TUTORIALS**

# AUTODOC – TOP QUALITY AND AFFORDABLE CAR PARTS ONLINE

**AUTODOC MOBILE APP: GREAT DEALS AND CONVENIENT SHOPPING**



**+ AUTODOC**

GET IT ON  
**Google Play**

 Download on the  
**App Store**

**Download**

**A GREAT SELECTION OF SPARE PARTS FOR YOUR CAR**

**WHEEL BEARING: A WIDE SELECTION**

## **DISCLAIMER:**

The document contains only general recommendations that may be useful for you when you perform repair or replacement work. AUTODOC shall not be liable for any loss, injury, damage of property occurring in the repair or replacement process due to incorrect use or misinterpretation of the provided information.

AUTODOC shall not be liable for any possible mistakes and uncertainties in this guide. The information provided is for information purposes only and cannot replace advice from specialists.

AUTODOC shall not be liable for incorrect or hazardous usage of equipment, tools and car parts. AUTODOC strongly recommends to be careful and observe the safety rules when performing repair or replacement works. Remember: usage of low quality auto parts does not guarantee you the appropriate level of road safety.

© Copyright 2023 – All the contents of this website, in particular texts, photographs and graphics, are protected by copyright. All rights, including reproduction, publication, editing and translation rights, are reserved by AUTODOC SE.