



How to change rear
brake shoes on
**PEUGEOT PARTNER
Combispace (5F)** –
replacement guide

SIMILAR VIDEO TUTORIAL



This video shows the replacement procedure of a similar car part on another vehicle

Important!

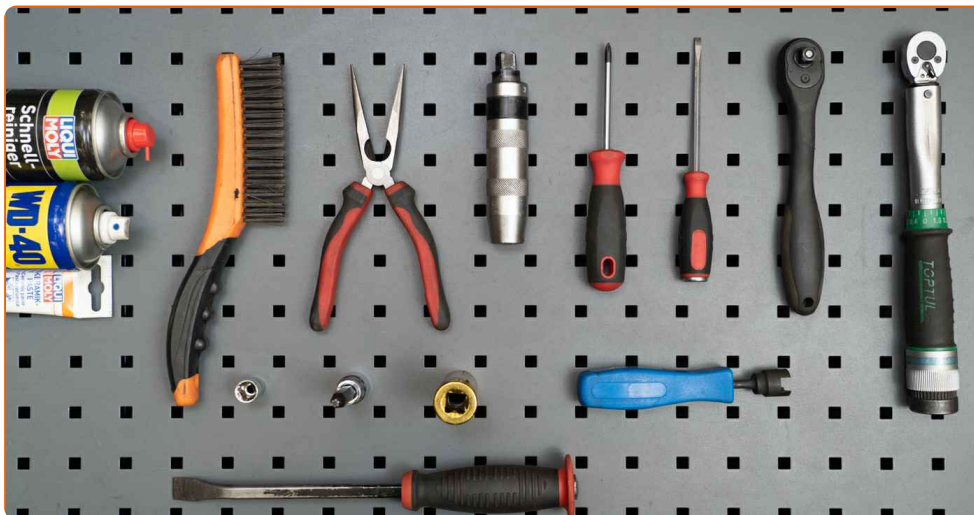
This replacement procedure can be used for:

PEUGEOT PARTNER Combispac (5F) 1.1, PEUGEOT PARTNER Combispac (5F) 1.4, PEUGEOT PARTNER Combispac (5F) 1.9 D, PEUGEOT PARTNER Combispac (5F) 1.8, PEUGEOT PARTNER Combispac (5F) 2.0 HDI, PEUGEOT PARTNER Combispac (5F) 1.6 16V, PEUGEOT PARTNER Combispac (5F) 1.6 HDi 90, PEUGEOT PARTNER Combispac (5F) 1.6 HDi 75, PEUGEOT PARTNER Combispac (5F) 1.9 D 4x4, PEUGEOT PARTNER Combispac (5F) 2.0 HDi 4x4, PEUGEOT PARTNER Combispac (5F) Electric, PEUGEOT PARTNER Combispac (5F) 1.6 Flexfuel, PEUGEOT PARTNER Combispac (5F) 1.6 HDI 92

The steps may slightly vary depending on the car design.

This tutorial was created based on the replacement procedure for a similar car part on: CITROËN Berlingo / Berlingo First Van (M_) 1.9 D

REPLACEMENT: BRAKE SHOES – PEUGEOT PARTNER COMBISPACE (5F). LIST OF THE TOOLS YOU'LL NEED:



- Wire brush
- WD-40 spray
- Brake cleaner
- Ceramic grease
- Torque wrench
- Drive socket # 12
- Torx bit T30
- Wheel impact socket #19
- Ratchet wrench
- Brake spring compressor tool
- Flat screwdriver
- Phillips Screwdriver
- Impact screwdriver
- Long nose pliers
- Vice
- Crow bar
- Wheel chock

Buy tools

Replacement: brake shoes – PEUGEOT PARTNER Combispace (5F). Tip from AUTODOC experts:

- Replace brake shoes as a set on an axle. This will ensure efficient braking.
- The replacement procedure is identical for brake shoes on the same axle.
- Please note: all work on the car – PEUGEOT PARTNER Combispace (5F) – should be done with the engine switched off.

CARRY OUT REPLACEMENT IN THE FOLLOWING ORDER:

1 Secure the wheels with chocks.

2 Loosen the wheel mounting bolts. Use wheel impact socket #19.



3 Raise the car.

Replacement: brake shoes – PEUGEOT PARTNER Combispace (5F). Tip:

- If you are using a jack, make sure it rests on a flat surface without any unevenness.
- Be sure to additionally secure the car with jack stands.

4

Unscrew the wheel bolts.



AUTODOC recommends:

- Warning! To avoid injury, hold the wheel while unscrewing the fastening bolts.
PEUGEOT PARTNER Combispace (5F)

5

Remove the wheel.



6

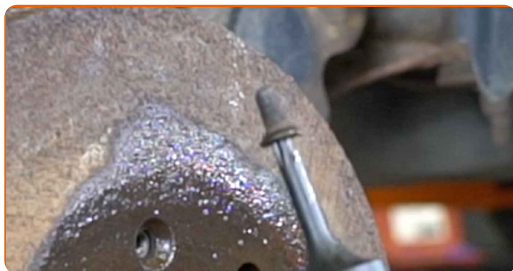
Clean the brake drum fasteners. Use a wire brush. Use WD-40 spray.



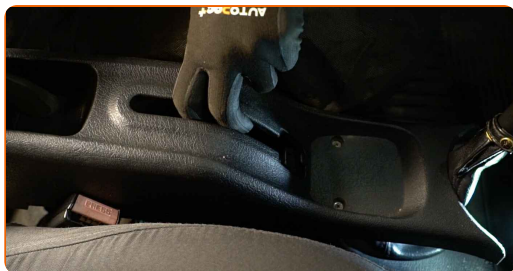
7 Unscrew the brake drum fasteners. Use Torx T30. Use an impact screwdriver.



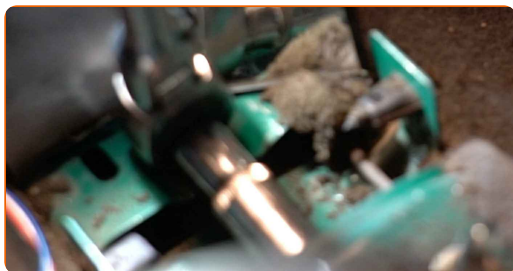
8 Remove the fastening bolts.



9 Unscrew the fasteners of the centre console and remove it. Use a Phillips screwdriver.



10 Loosen the parking brake cable adjustment nut. Use a drive socket #12. Use a ratchet wrench.



11 Remove the brake drum. Use a crowbar.



12 Clean the fasteners of the brake shoes. Use a wire brush. Use a brake cleaner.



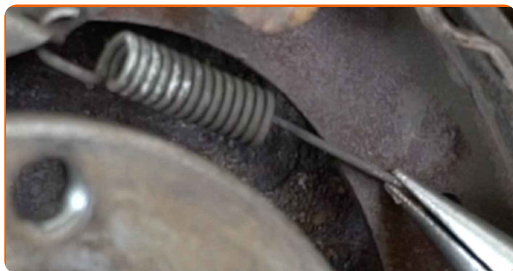
AUTODOC recommends:

- Replacement: brake shoes – PEUGEOT PARTNER Combispace (5F). After applying the spray, wait a few minutes.

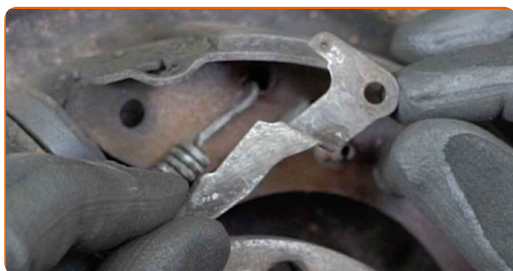
13 Remove the lower return spring of the brake shoes. Use a flat screwdriver.



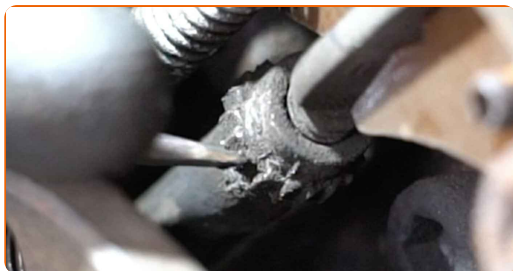
14 Remove the side retaining spring. Use long nose pliers.



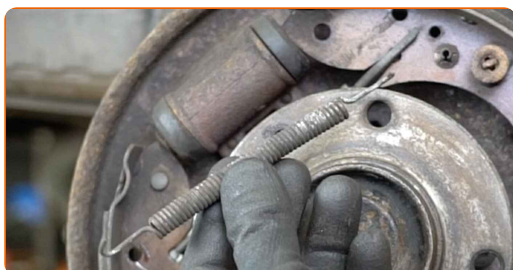
15 Remove the adjuster lever.



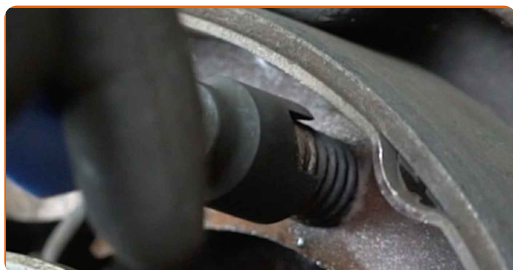
16 Loosen the brake shoe adjuster. Use a flat screwdriver.



17 Remove the upper return spring of the brake shoes. Use a flat screwdriver.



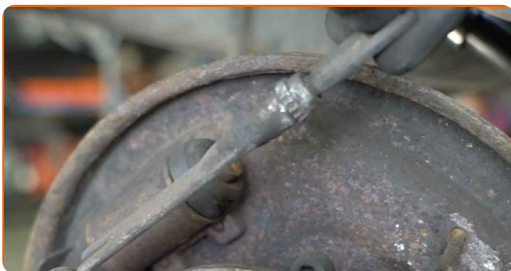
18 Remove the retainers of the drum brake shoes. Use a brake spring compressor tool.



19 Remove the right brake shoe.



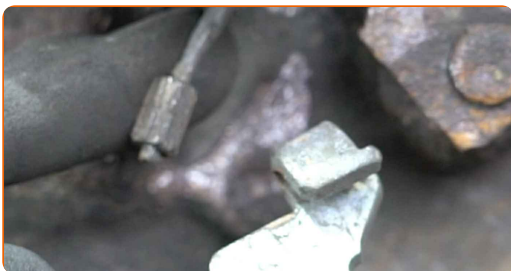
20 Remove the brake shoe adjuster.



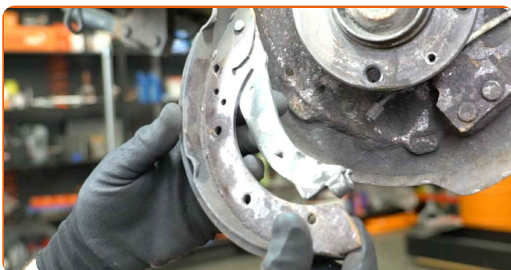
21 Remove the parking brake retaining spring of the left brake shoe. Use a flat screwdriver.



22 Disconnect the parking brake cable.



23 Remove the left brake shoe.



24

Clean the mounting seats of the brake shoes. Use a wire brush. Use a brake cleaner.

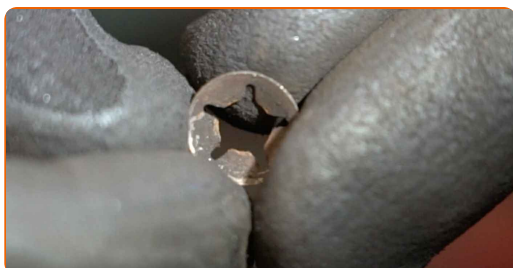


Replacement: brake shoes – PEUGEOT PARTNER Combispace (5F). Tip from AUTODOC experts:

- After applying the spray, wait a few minutes.

25

Remove the adjuster bushing from the old right-hand shoe and install it on the new one. Use a vice.



26

Connect the parking brake cable to the parking brake lever.



27

Install a new left brake shoe.



28

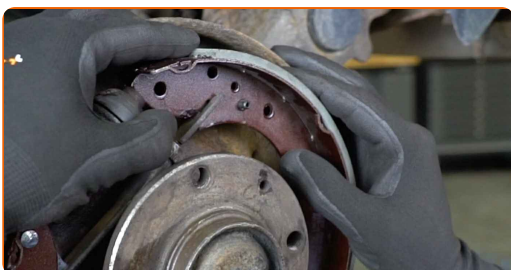
Install the retainers of the drum brake shoes. Use a brake shoe retaining spring compressor.

**29**

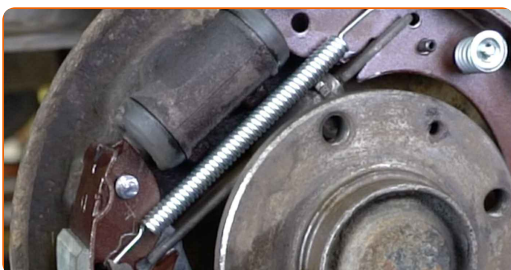
Install the brake shoe adjuster.

**30**

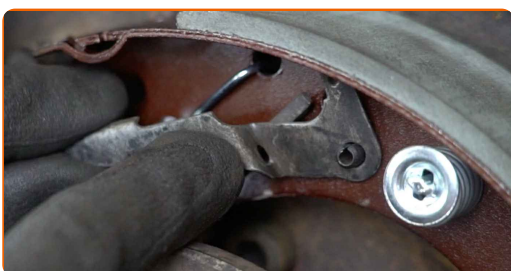
Install a new right brake shoe.

**31**

Install the upper return spring. Use a crowbar.

**32**

Install the adjuster lever.



33 Install the hold-down spring. Use long nose pliers.



34 Install the lower return spring. Use a crowbar.



35 Install the parking brake retaining spring of the left brake shoe.



36 Clean the hub. Use a wire brush.



37 Treat the contacting surface. Use ceramic grease.



38 Readjust the brake shoe adjuster. Use a crowbar.



39 Install a brake drum.



40 Install the fastening bolts.



41 Tighten the brake drum fasteners. Use Torx T30. Use a torque wrench. Tighten it to 10 Nm torque.



42 Treat the surface where the wheel rim contacts the brake drum. Use ceramic grease.



43 Install the wheel.



AUTODOC recommends:

- Warning! To avoid injury, hold the wheel while screwing in the fastening bolts on the car. PEUGEOT PARTNER Combispace (5F)

44 Screw in the wheel bolts. Use wheel impact socket #19.



AUTODOC recommends:

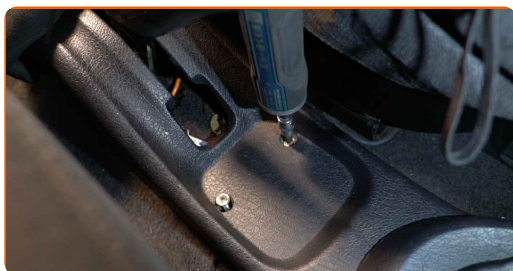
- Without starting the engine, press the brake pedal several times until you feel significant resistance.

45 Adjust the parking brake cable adjustment nut. Use a drive socket #12. Use a ratchet wrench.



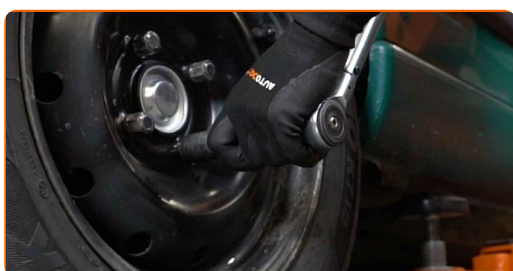
46

Install the centre console and screw in its fasteners. Use a Phillips screwdriver.



47

Lower the car and working in a cross order, tighten the wheel bolts. Use wheel impact socket #19. Use a torque wrench. Tighten it to 90 Nm torque.



48

Remove the jacks and chocks.



WELL DONE! 

VIEW MORE TUTORIALS

AUTODOC – TOP QUALITY AND AFFORDABLE CAR PARTS ONLINE

AUTODOC MOBILE APP: GREAT DEALS AND CONVENIENT SHOPPING



+ AUTODOC

GET IT ON
Google Play

 Download on the
App Store

Download

A GREAT SELECTION OF SPARE PARTS FOR YOUR CAR

BRAKE SHOES: A WIDE SELECTION

DISCLAIMER:

The document contains only general recommendations that may be useful for you when you perform repair or replacement work. AUTODOC shall not be liable for any loss, injury, damage of property occurring in the repair or replacement process due to incorrect use or misinterpretation of the provided information.

AUTODOC shall not be liable for any possible mistakes and uncertainties in this guide. The information provided is for information purposes only and cannot replace advice from specialists.

AUTODOC shall not be liable for incorrect or hazardous usage of equipment, tools and car parts. AUTODOC strongly recommends to be careful and observe the safety rules when performing repair or replacement works. Remember: usage of low quality auto parts does not guarantee you the appropriate level of road safety.

© Copyright 2023 – All the contents of this website, in particular texts, photographs and graphics, are protected by copyright. All rights, including reproduction, publication, editing and translation rights, are reserved by AUTODOC SE.