



How to change brake
drum on **PEUGEOT 405 I**
Saloon (15B) –
replacement guide

SIMILAR VIDEO TUTORIAL



This video shows the replacement procedure of a similar car part on another vehicle

Important!

This replacement procedure can be used for:

PEUGEOT 405 I Saloon (15B) 1.6, PEUGEOT 405 I Saloon (15B) 1.9, PEUGEOT 405 I Saloon (15B) 1.8 Turbo diesel, PEUGEOT 405 I Saloon (15B) 1.9 Diesel, PEUGEOT 405 I Saloon (15B) 1.9 Injection, PEUGEOT 405 I Saloon (15B) 1.9 4x4, PEUGEOT 405 I Saloon (15B) 1.4, PEUGEOT 405 I Saloon (15B) 1.6 4x4, PEUGEOT 405 I Saloon (15B) 1.8 D 4x4, PEUGEOT 405 I Saloon (15B) 1.9 (15BDFV)

The steps may slightly vary depending on the car design.

This tutorial was created based on the replacement procedure for a similar car part on: CITROËN Berlingo / Berlingo First Van (M_) 1.9 D

REPLACEMENT: BRAKE DRUM – PEUGEOT 405 I SALOON (15B). LIST OF THE TOOLS YOU'LL NEED:



- Wire brush
- WD-40 spray
- Ceramic grease
- Torque wrench
- Drive socket # 12
- Torx bit T30
- Wheel impact socket #19
- Ratchet wrench
- Phillips Screwdriver
- Impact screwdriver
- Crow bar
- Wheel chock

Buy tools

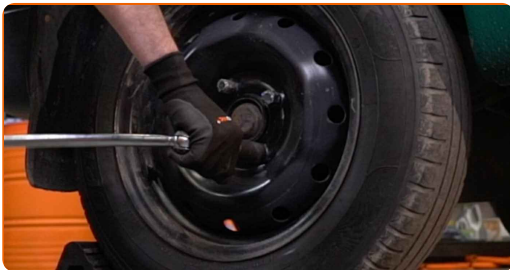
AUTODOC recommends:

- Replace the brake drums on PEUGEOT 405 I Saloon (15B) in pair for the rear axle. Disregarding the parts state. It ensures even braking.
- The replacement procedure is identical for the right and left brake drums on the same axle.
- When replacing the brake drums, be sure to also change the brake shoes.
- Replacement: brake drum – PEUGEOT 405 I Saloon (15B). Take the following steps:

CARRY OUT REPLACEMENT IN THE FOLLOWING ORDER:

1 Secure the wheels with chocks.

2 Loosen the wheel mounting bolts. Use wheel impact socket #19.



3 Raise the car.

Replacement: brake drum – PEUGEOT 405 I Saloon (15B). Tip from AUTODOC:

- If you are using a jack, make sure it rests on a flat surface without any unevenness.
- Be sure to additionally secure the car with jack stands.

4

Unscrew the wheel bolts.



AUTODOC recommends:

- Warning! To avoid injury, hold the wheel while unscrewing the fastening bolts.
PEUGEOT 405 I Saloon (15B)

5

Remove the wheel.



6 Clean the brake drum fasteners. Use a wire brush. Use WD-40 spray.



7 Unscrew the brake drum fasteners. Use Torx T30. Use an impact screwdriver.



8 Remove the fastening bolts.



9 Unscrew the fasteners of the centre console and remove it. Use a Phillips screwdriver.



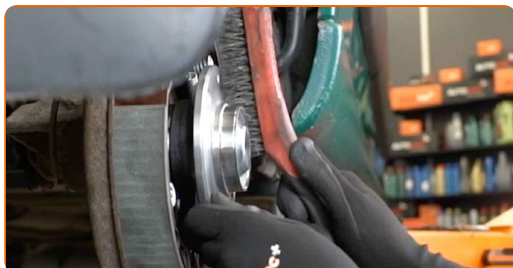
10 Loosen the parking brake cable adjustment nut. Use a drive socket #12. Use a ratchet wrench.



11 Remove the brake drum. Use a crowbar.



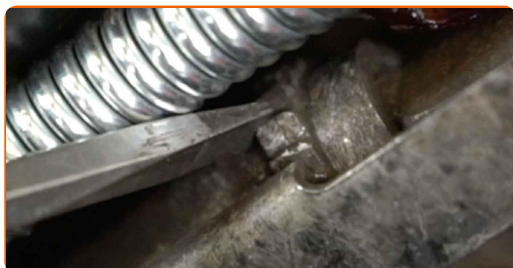
12 Clean the hub. Use a wire brush.



13 Treat the contacting surface. Use ceramic grease.



14 Readjust the brake shoe adjuster. Use a crowbar.



15 Install a brake drum.



16 Install the fastening bolts.



17 Tighten the brake drum fasteners. Use Torx T30. Use a torque wrench. Tighten it to 10 Nm torque.



18 Treat the surface where the wheel rim contacts the brake drum. Use ceramic grease.



19 Install the wheel.



AUTODOC recommends:

- Warning! To avoid injury, hold the wheel while screwing in the fastening bolts on the car. PEUGEOT 405 I Saloon (15B)

20

Screw in the wheel bolts. Use wheel impact socket #19.



Replacement: brake drum – PEUGEOT 405 I Saloon (15B). Tip:

- Without starting the engine, press the brake pedal several times until you feel significant resistance.

21

Adjust the parking brake cable adjustment nut. Use a drive socket #12. Use a ratchet wrench.



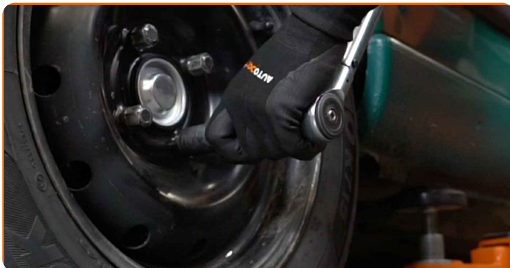
22

Install the centre console and screw in its fasteners. Use a Phillips screwdriver.



23

Lower the car and working in a cross order, tighten the wheel bolts. Use wheel impact socket #19. Use a torque wrench. Tighten it to 90 Nm torque.



24

Remove the jacks and chocks.



WELL DONE! 

VIEW MORE TUTORIALS

AUTODOC – TOP QUALITY AND AFFORDABLE CAR PARTS ONLINE

AUTODOC MOBILE APP: GREAT DEALS AND CONVENIENT SHOPPING



+ AUTODOC

GET IT ON
 **Google Play**

Download on the
 **App Store**

Download

A GREAT SELECTION OF SPARE PARTS FOR YOUR CAR

BRAKE DRUM: A WIDE SELECTION

DISCLAIMER:

The document contains only general recommendations that may be useful for you when you perform repair or replacement work. AUTODOC shall not be liable for any loss, injury, damage of property occurring in the repair or replacement process due to incorrect use or misinterpretation of the provided information.

AUTODOC shall not be liable for any possible mistakes and uncertainties in this guide. The information provided is for information purposes only and cannot replace advice from specialists.

AUTODOC shall not be liable for incorrect or hazardous usage of equipment, tools and car parts. AUTODOC strongly recommends to be careful and observe the safety rules when performing repair or replacement works. Remember: usage of low quality auto parts does not guarantee you the appropriate level of road safety.

© Copyright 2023 – All the contents of this website, in particular texts, photographs and graphics, are protected by copyright. All rights, including reproduction, publication, editing and translation rights, are reserved by AUTODOC SE.