



How to change front  
wheel bearing on  
**PEUGEOT 307 Saloon** –  
replacement guide

## SIMILAR VIDEO TUTORIAL



This video shows the replacement procedure of a similar car part on another vehicle

### Important!

This replacement procedure can be used for:

PEUGEOT 307 Saloon 1.6, PEUGEOT 307 Saloon 2.0, PEUGEOT 307 Saloon 2.0 HDi

The steps may slightly vary depending on the car design.

This tutorial was created based on the replacement procedure for a similar car part on: PEUGEOT 307 SW (3H) 2.0 HDi 135

REPLACEMENT: WHEEL BEARING – PEUGEOT 307  
SALOON. TOOLS YOU NEED:



- Wire brush
- WD-40 spray
- Brake cleaner
- Copper grease
- Torque wrench
- Combination spanner #18
- Drive socket # 10
- Drive socket # 16
- Drive socket # 17
- Drive socket # 18
- Drive socket # 21
- Drive socket # 36
- Torx bit T30
- Torx bit T50
- Wheel impact socket #17
- Ratchet wrench
- Bush and bearing driver set
- Tap wrench
- Hammer
- Pin punch
- Impact screwdriver
- Circlip pliers
- 3-Arm Gear Puller
- Bearing separator
- Ball joint puller
- Crow bar
- Hydraulic transmission jack
- Wheel chock

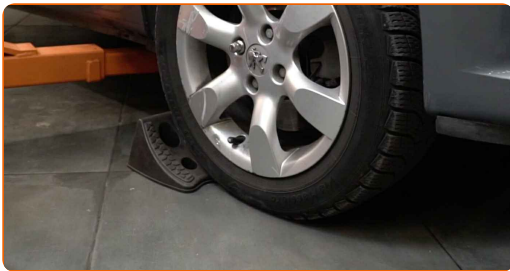
**Buy tools**

Replacement: wheel bearing – PEUGEOT 307 Saloon. AUTODOC recommends:

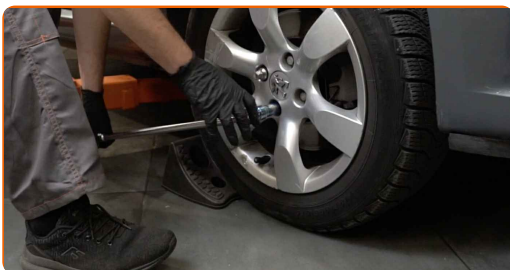
- Do not re-use the bearing assembly of your PEUGEOT 307 Saloon car.
- The wheel hub bearing replacement procedure is identical for both wheels on the same axle.
- All work should be done with the engine stopped.

**REPLACEMENT: WHEEL BEARING – PEUGEOT 307 SALOON. TAKE THE FOLLOWING STEPS:**

**1** Secure the wheels with chocks.



**2** Loosen the wheel mounting bolts. Use wheel impact socket #17.



**3** Raise the front of the car and secure on supports.

4

Unscrew the wheel bolts.



Replacement: wheel bearing – PEUGEOT 307 Saloon. AUTODOC experts recommend:

- To avoid injury, hold up the wheel when unscrewing the bolts.

5

Remove the wheel.

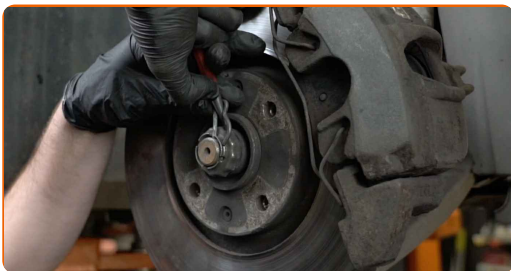


6

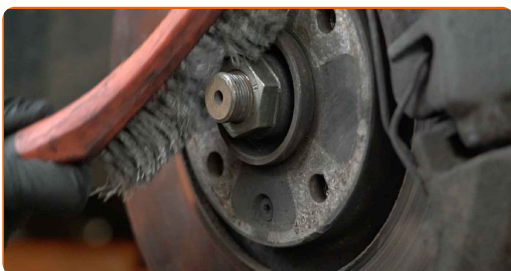
Clean the CV axle nut cotter pin. Use a wire brush.



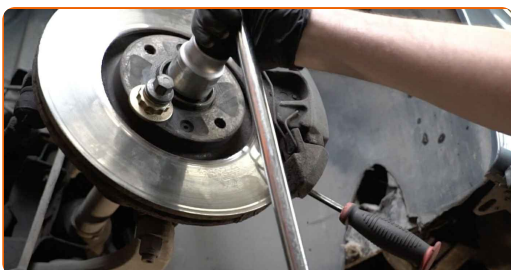
**7** Remove the CV axle nut cotter pin. Use a pin punch.



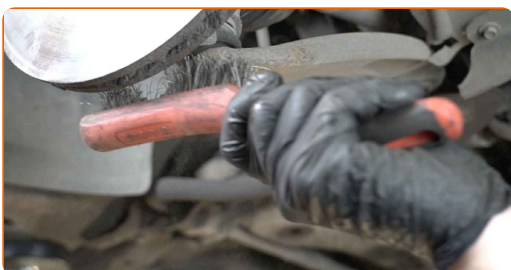
**8** Clean the fastener of the driveshaft. Use a wire brush. Use WD-40 spray.



**9** Loosen the fastener of the driveshaft. Use a drive socket #36. Use a ratchet wrench.



**10** Clean all joints of the arm. Use a wire brush. Use WD-40 spray.



- 11 Unscrew the fastener connecting the ball joint to the suspension control arm. Use a drive socket #21. Use a tap wrench.



- 12 Disconnect the spherical joint from the arm. Use a ball joint puller.



- 13 Prop up the steering knuckle. Use a hydraulic transmission jack.



- 14 Disconnect the spherical joint from the arm. Use a crowbar.



- 15 Remove the support from under the steering knuckle.





**AUTODOC recommends:**

- Replacement: wheel bearing – PEUGEOT 307 Saloon. Lower the transmission jack smoothly, without jerks, to avoid damaging components and mechanisms.

**16**

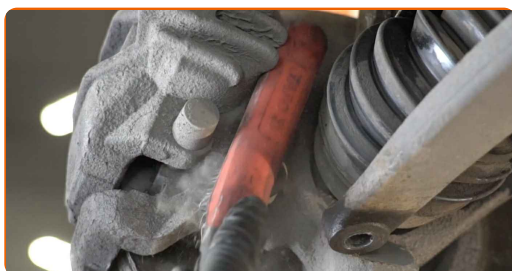
Detach the driveshaft from the steering knuckle.

**Replacement: wheel bearing – PEUGEOT 307 Saloon. Tip:**

- Make sure that the drive shaft is not unloaded (when the car is jacked).

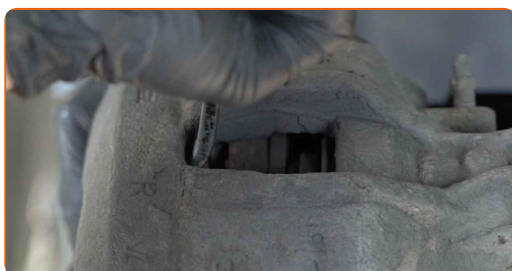
**17**

Clean the brake caliper bracket fasteners. Use a wire brush. Use WD-40 spray.



**18**

Spread the brake pads. Use a crowbar.





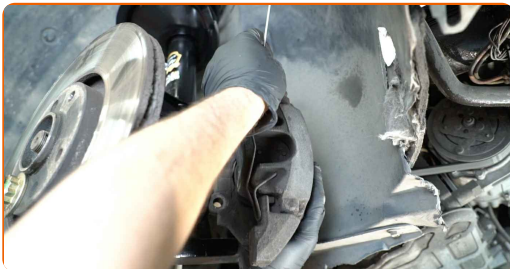
**19**

Unscrew the caliper bracket fastening. Use Torx T50. Use a tap wrench.



**20**

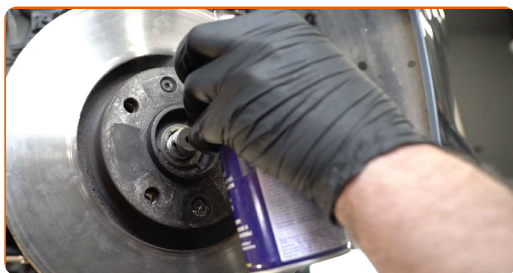
Remove the brake caliper together with its bracket.



**Replacement: wheel bearing – PEUGEOT 307 Saloon. Professionals recommend:**

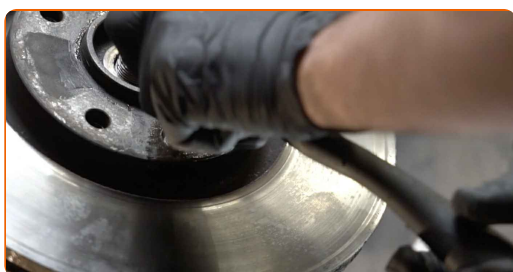
- Tie the caliper to the suspension or to the body with a wire without disconnecting from the brake hose to prevent depressurization of the brake system.
- Make sure that the brake caliper is not hanging on the brake hose.
- Don't press the brake pedal after the brake caliper has been removed. As a result, the piston can fall out from the brake cylinder, and brake fluid leakage and depressurization of the system may occur.
- Check the brake caliper bracket, brake caliper guide pins and boots. Clean them. Replace, if necessary.

**21** Clean the fastener connecting the tie rod end to the steering knuckle. Use a wire brush. Use WD-40 spray.

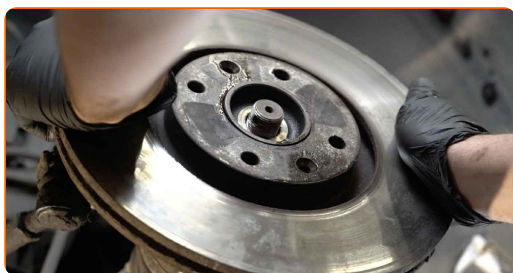


**22** Clean the brake disc fasteners. Use a wire brush. Use WD-40 spray.

**23** Unscrew the brake disc fastening. Use Torx T30. Use an impact screwdriver.



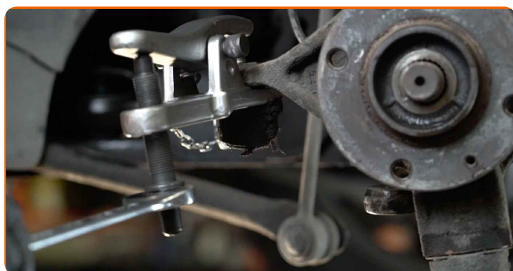
**24** Remove the brake disc.



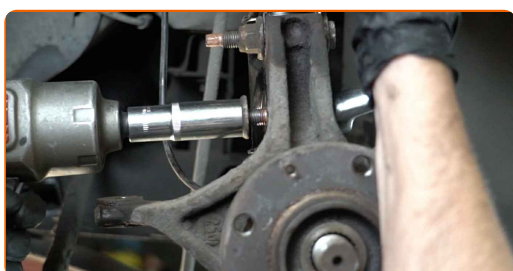
**25** Unscrew the end fastening nut to the steering knuckle. Use a drive socket #16. Use a ratchet wrench.



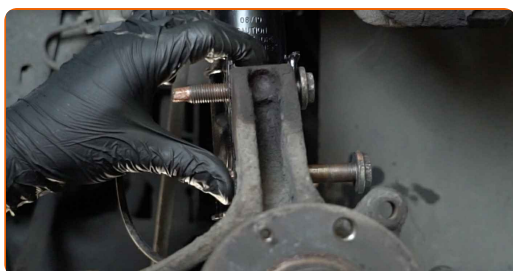
**26** Disconnect the tie rod end from the steering knuckle. Use a ball joint puller.



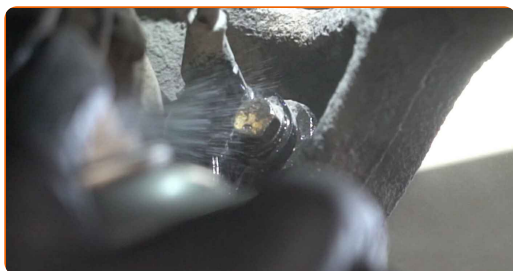
**27** Unscrew the lower fastener connecting the shock strut to the steering knuckle. Use a combination spanner #18. Use a drive socket #18. Use a ratchet wrench.



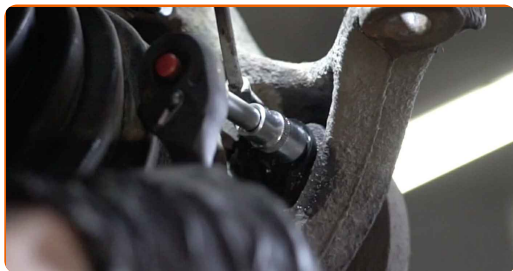
**28** Remove the fastening bolt.



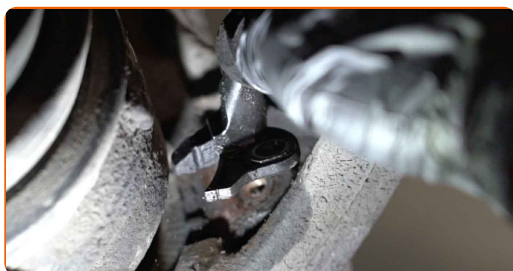
**29** Clean the ABS sensor fastener. Use a wire brush. Use WD-40 spray.



**30** Unscrew the ABS sensor fastener. Use a drive socket #10. Use a ratchet wrench.



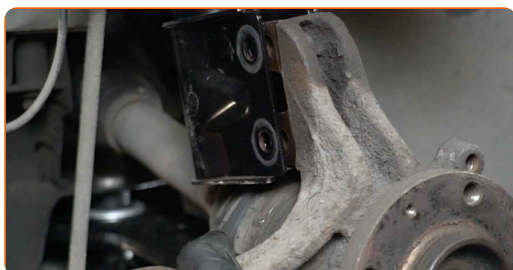
**31** Remove the ABS sensor from the steering knuckle.



**32** Remove the fastening bolt.



**33** Disconnect the steering knuckle from the shock absorber strut.



**34** Remove the steering knuckle together with the hub.



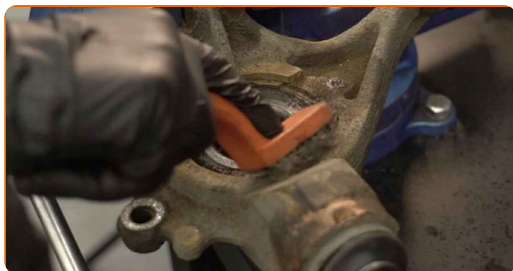
**35** Remove the wheel hub from the steering knuckle. Use a pin punch. Use a hammer.



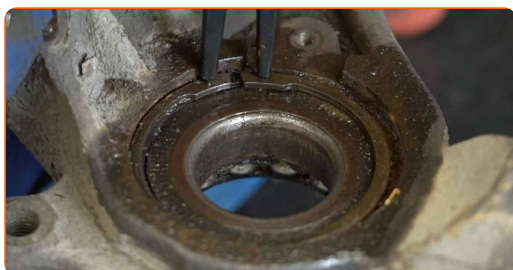
**36** Pull the bearing inner race out of the wheel hub. Use a bearing separator. Use 3-Arm Gear Puller.



**37** Clean the wheel hub bearing retaining ring. Use a wire brush. Use WD-40 spray.



**38** Remove the wheel hub bearing retaining ring. Use circlip pliers.





**39**

Press out the wheel hub bearing. Use a bush and bearing driver set.



**40**

Clean the hub bearing mounting seat. Use a wire brush. Use WD-40 spray.



**41**

Press the new bearing in the steering knuckle.



**Replacement: wheel bearing – PEUGEOT 307 Saloon. Tip from AUTODOC experts:**

- Check to make sure the wheel hub bearing is positioned correctly. Avoid its misalignment.
- Stop pressing on the surface of the bearing immediately after it has been fitted into its mounting seat.

42 Install the wheel hub bearing retaining ring. Use circlip pliers.



43 Clean the hub. Use WD-40 spray.



44 Install the wheel hub on the steering knuckle. Use a bush and bearing driver set.

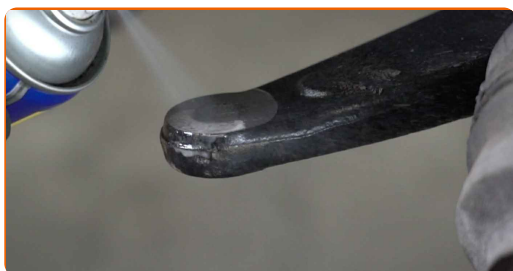


45 Clean the splines of the drive shaft CV joint. Use a wire brush. Use WD-40 spray.

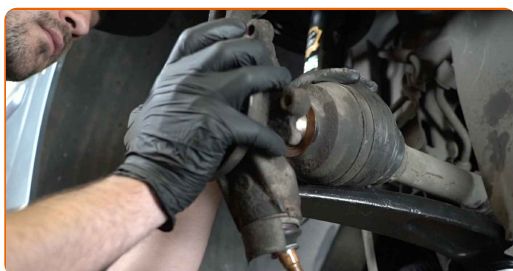




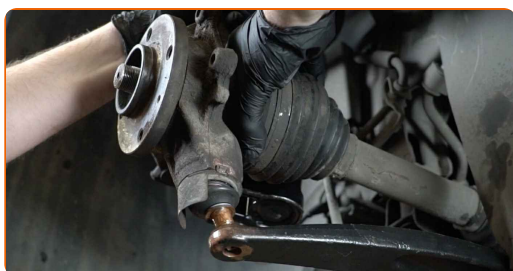
- 46 Clean the mounting seats of the tie rod end. Clean the mounting seats and the thread of the suspension arm. Use a wire brush. Use WD-40 spray.



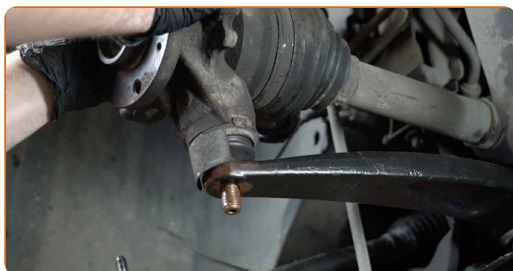
- 47 Install the steering knuckle with a hub in assembly.



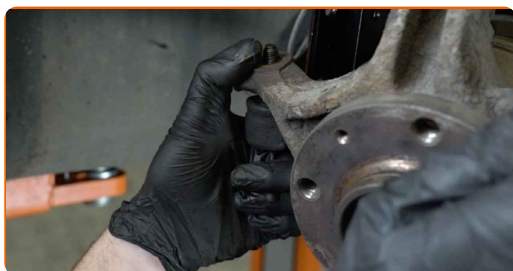
- 48 Install the drive shaft.



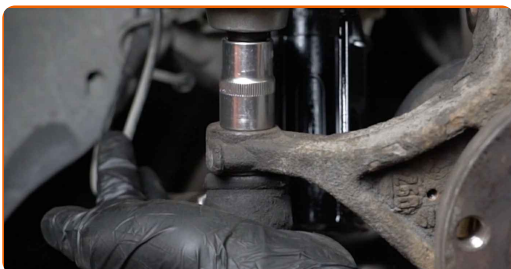
- 49 Attach the ball joint to the control arm.



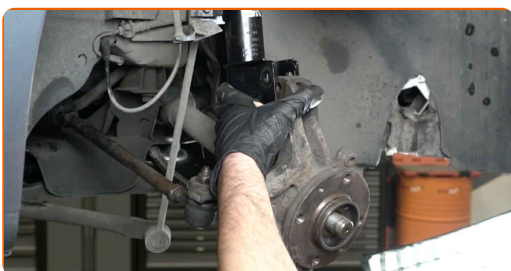
- 50 Connect the tie rod end to the steering knuckle.



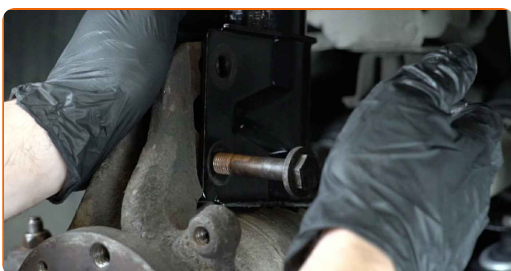
- 51** Screw on the fastening nut that connects the tie rod end to the steering knuckle. Use a drive socket #17. Use a ratchet wrench.



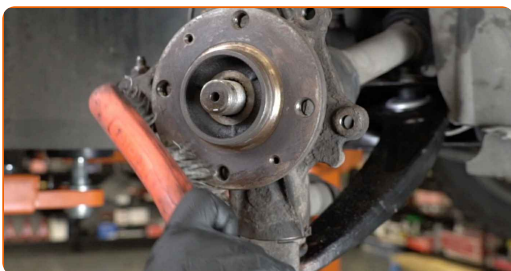
- 52** Fix the shock absorber strut on the steering knuckle. Use a crowbar.



- 53** Install the fastening bolts.



- 54** Clean the hub. Use a wire brush. Treat the contacting surface. Use copper grease.

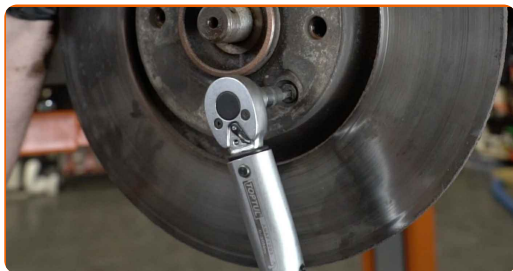


- 55** Install the brake disc.



56

Tighten the brake disc fastening. Use Torx T30. Use a torque wrench. Tighten it to 9 Nm torque.



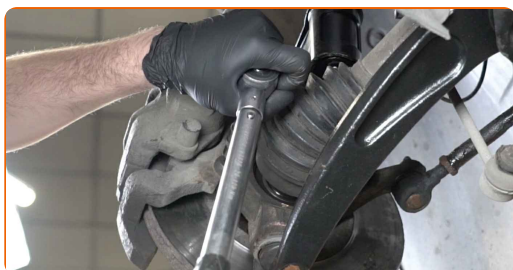
57

Install the brake caliper together with its bracket.



58

Tighten the brake caliper bracket. Use Torx T50. Use a torque wrench. Tighten it to 105 Nm torque.



59

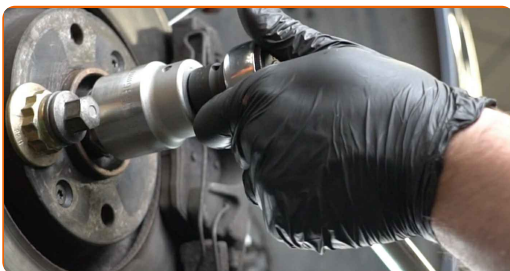
Tighten the lower fasteners connecting the shock strut to the steering knuckle. Use a combination spanner #18. Use a drive socket #18. Use a torque wrench. Tighten it to 90 Nm torque.



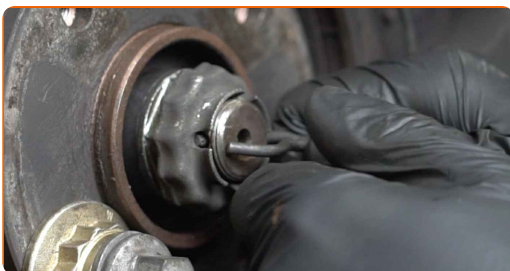
- 60** Tighten the fastening nut connecting the tie rod end to the steering knuckle. Use a drive socket #17. Use a torque wrench. Tighten it to 35 nm torque.



- 61** Tighten the drive shaft nut. Use a drive socket #36. Use a torque wrench. Tighten it to 280 Nm torque.



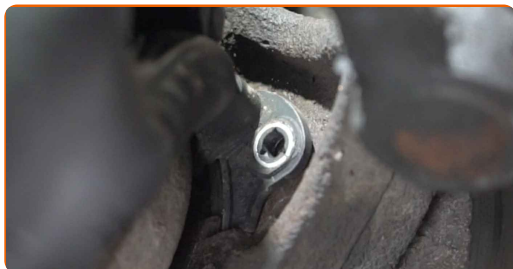
- 62** Install the CV axle nut cotter pin. Use a crowbar. Use a hammer.



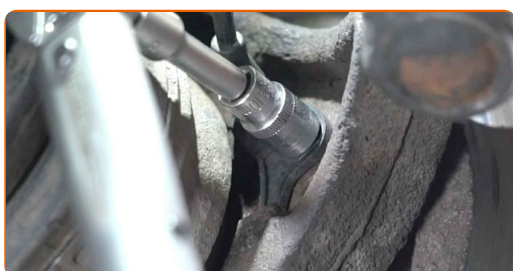
- 63** Screw the fasteners of the ball joint. Use a drive socket #21. Use a ratchet wrench.



**64** Connect the ABS sensor to the steering knuckle.

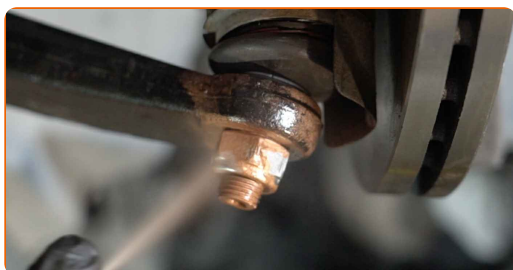


**65** Tighten the fastener that connects the ABS sensor to the steering knuckle. Use a drive socket #10. Use a torque wrench. Tighten it to 11 nm torque.



**66** Tighten the ball joint fastener. Use a drive socket #21. Use a torque wrench. Tighten it to 50 nm torque.

**67** Treat all joints of the arm. Treat the shock strut fasteners. Use copper grease.



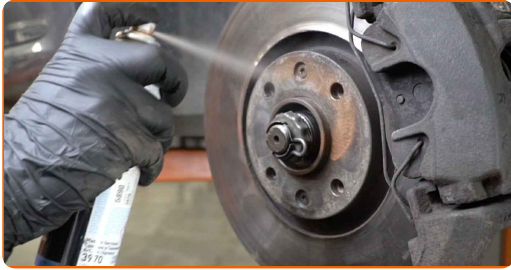
**68** Clean the wheel rim mounting seat. Use a wire brush.





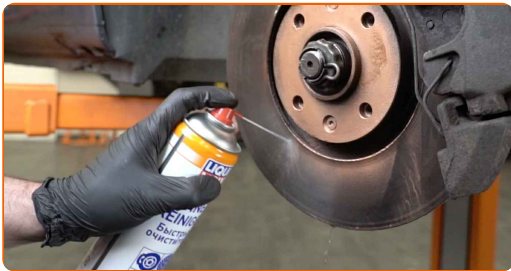
**69**

Treat the surface where the brake disc contacts the wheel rim. Use copper grease.



**70**

Clean the brake disk surface. Use a brake cleaner.

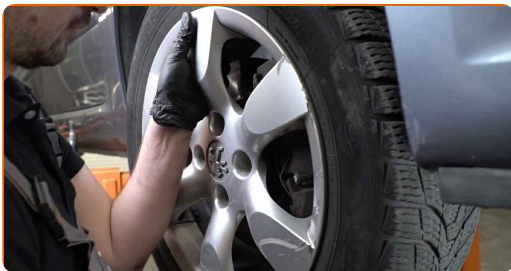


**AUTODOC recommends:**

- Replacement: wheel bearing – PEUGEOT 307 Saloon. After applying the spray, wait a few minutes.

**71**

Install the wheel.



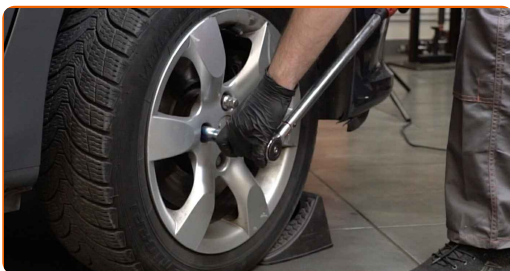
**Replacement: wheel bearing – PEUGEOT 307 Saloon. Tip from AUTODOC:**

- To avoid injury, hold up the wheel when screwing in the fastening bolts.

**72** Screw in the wheel bolts. Use wheel impact socket #17.



**73** Lower the car and working in a cross order, tighten the wheel bolts. Use wheel impact socket #17. Use a torque wrench. Tighten it to 100 Nm torque.



**74** Remove the jacks and chocks.



**WELL DONE!** 

**VIEW MORE TUTORIALS**



# AUTODOC – TOP QUALITY AND AFFORDABLE CAR PARTS ONLINE

**AUTODOC MOBILE APP: GREAT DEALS AND CONVENIENT SHOPPING**



**+ AUTODOC**

GET IT ON  
**Google Play**

 Download on the  
**App Store**

**Download**

**A GREAT SELECTION OF SPARE PARTS FOR YOUR CAR**

**WHEEL BEARING: A WIDE SELECTION**

## **DISCLAIMER:**

The document contains only general recommendations that may be useful for you when you perform repair or replacement work. AUTODOC shall not be liable for any loss, injury, damage of property occurring in the repair or replacement process due to incorrect use or misinterpretation of the provided information.

AUTODOC shall not be liable for any possible mistakes and uncertainties in this guide. The information provided is for information purposes only and cannot replace advice from specialists.

AUTODOC shall not be liable for incorrect or hazardous usage of equipment, tools and car parts. AUTODOC strongly recommends to be careful and observe the safety rules when performing repair or replacement works. Remember: usage of low quality auto parts does not guarantee you the appropriate level of road safety.

© Copyright 2022 – All the contents of this website, in particular texts, photographs and graphics, are protected by copyright. All rights, including reproduction, publication, editing and translation rights, are reserved by AUTODOC GmbH.