



How to change rear  
wheel bearing on

**PEUGEOT 208 I**

**Hatchback (CA\_, CC\_) –  
replacement guide**

### SIMILAR VIDEO TUTORIAL



This video shows the replacement procedure of a similar car part on another vehicle

#### **ⓘ Important!**

This replacement procedure can be used for:

PEUGEOT 208 I Hatchback (CA\_, CC\_) 1.6, PEUGEOT 208 I Hatchback (CA\_, CC\_) 1.4 HDi, PEUGEOT 208 I Hatchback (CA\_, CC\_) 1.6 HDi, PEUGEOT 208 I Hatchback (CA\_, CC\_) 1.0, PEUGEOT 208 I Hatchback (CA\_, CC\_) 1.2, PEUGEOT 208 I Hatchback (CA\_, CC\_) 1.4 VTi, PEUGEOT 208 I Hatchback (CA\_, CC\_) 1.6 GTi, PEUGEOT 208 I Hatchback (CA\_, CC\_) 1.6 BlueHDi 100, PEUGEOT 208 I Hatchback (CA\_, CC\_) 1.6 THP 165, PEUGEOT 208 I Hatchback (CA\_, CC\_) 1.4 GPL, PEUGEOT 208 I Hatchback (CA\_, CC\_) 1.2 GPL, PEUGEOT 208 I Hatchback (CA\_, CC\_) 1.5 BlueHDI 100

The steps may slightly vary depending on the car design.

This tutorial was created based on the replacement procedure for a similar car part on: PEUGEOT 207 Hatchback 1.6 16V VTi

**REPLACEMENT: WHEEL BEARING – PEUGEOT 208 I HATCHBACK (CA\_, CC\_). LIST OF THE TOOLS YOU'LL NEED:**



- Wire brush
- Nylon cleaning brush
- WD-40 spray
- All-purpose cleaning spray
- Brake cleaner
- Multipurpose grease
- Copper grease
- Torque wrench
- Combination spanner #19
- Drive socket # 13
- Drive socket # 36
- Torx bit T55
- Wheel impact socket #17
- Brake caliper wind back tool
- Ratchet wrench
- Tap wrench
- Hammer
- Flat chisel
- Rubber mallet
- Flat Screwdriver
- Crow bar
- Hub slide hammer puller
- Wheel chock

**Buy tools**

Replacement: wheel bearing – PEUGEOT 208 I Hatchback (CA\_, CC\_).  
AUTODOC recommends:

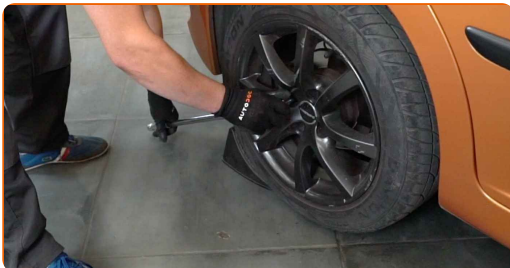
- Do not re-use the bearing assembly of your PEUGEOT 207 car.
- The wheel hub bearing replacement procedure is identical for both wheels on the same axle.
- All work should be done with the engine stopped.

**REPLACEMENT: WHEEL BEARING – PEUGEOT 208 I HATCHBACK (CA\_, CC\_). RECOMMENDED SEQUENCE OF STEPS:**

**1** Open the bonnet. Unscrew the brake fluid reservoir cap.

**2** Secure the wheels with chocks.

**3** Loosen the wheel mounting bolts. Use wheel impact socket #17.



**4** Raise the rear of the car and secure on supports.

**5** Unscrew the wheel bolts.



**AUTODOC recommends:**

- Important! Hold the wheel while unscrewing the fastening bolts. PEUGEOT 208 I Hatchback (CA\_, CC\_)

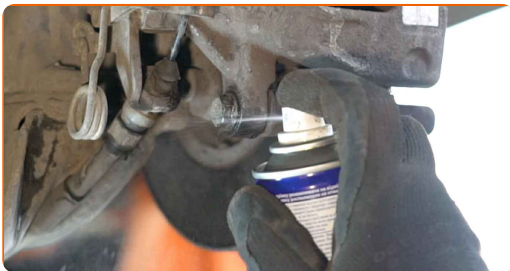
**6**

Remove the wheel.



**7**

Clean the brake caliper fasteners. Use a wire brush. Use all-purpose cleaning spray.



**8**

Unscrew the brake caliper fastening. Use a combination spanner #19. Use a drive socket #13. Use a ratchet wrench.



**9**

Spread the brake pads. Use a crowbar.

**10**

Remove the brake caliper.

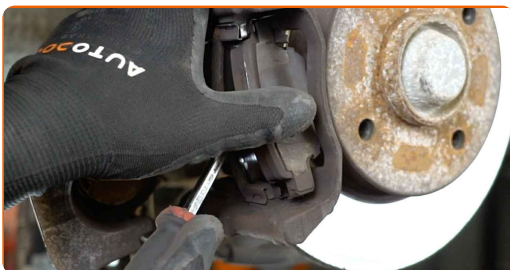


Replacement: wheel bearing – PEUGEOT 208 I Hatchback (CA\_, CC\_). Tip from AUTODOC experts:

- Tie the caliper to the suspension or to the body with a wire without disconnecting from the brake hose to prevent depressurization of the brake system.
- Make sure that the brake caliper is not hanging on the brake hose.
- Don't press the brake pedal after the brake caliper has been removed. As a result, the piston can fall out from the brake cylinder, and brake fluid leakage and depressurization of the system may occur.
- Check the brake caliper bracket, brake caliper guide pins and boots. Clean them. Replace, if necessary.

**11**

Remove the brake pads. Use a crowbar.



**12** Clean the brake caliper bracket fasteners. Use a wire brush. Use WD-40 spray.



**13** Unscrew the caliper bracket fastening. Use Torx T55. Use a tap wrench.



**14** Remove the caliper bracket.



**15** Clean the brake disc fasteners. Use a wire brush. Use WD-40 spray.





**16**

Remove the wheel hub nut cap. Use a crowbar. Use a rubber mallet.



Replacement: wheel bearing – PEUGEOT 208 I Hatchback (CA\_, CC\_). Tip from AUTODOC:

- In some cars, the wheel hub nut is not protected with a cap.

**17**

Unstake the wheel hub retaining nut. Use a flat metal-working chisel. Use a hammer.



**18**

Unscrew the hub nut. Use a drive socket #36. Use a tap wrench.





19

Remove the brake disc assembled with the wheel hub bearing. Use the hub slide hammer puller.



20

Clean the stub axle. Use a wire brush. Use all-purpose cleaning spray.



21

Treat the stub axle. Use a multipurpose grease. Use a flat screwdriver.



22

Clean the brake caliper bracket from dirt and dust. Use a wire brush. Use a brake cleaner.



**AUTODOC recommends:**

- Replacement: wheel bearing – PEUGEOT 208 I Hatchback (CA\_, CC\_). After applying the spray, wait a few minutes.

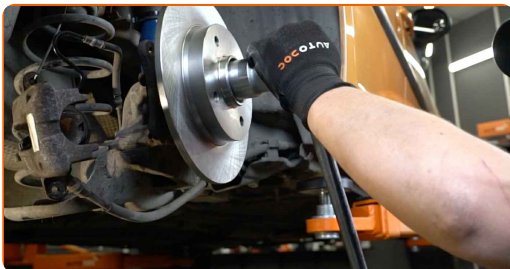
**23**

Install the brake disc assembled with the wheel hub bearing.



**24**

Tighten the wheel hub nut. Use a drive socket #36. Use a torque wrench. Tighten it to 270 nm torque.



**Replacement: wheel bearing – PEUGEOT 208 I Hatchback (CA\_, CC\_).  
AUTODOC experts recommend:**

- The wheel bearing unit must not tilt on the axle pin.
- During the installation process, use only new bolts and nuts.

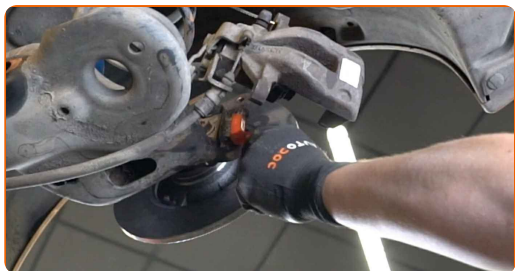
**25** Restake the wheel hub retaining nut. Use a flat metal-working chisel. Use a hammer.



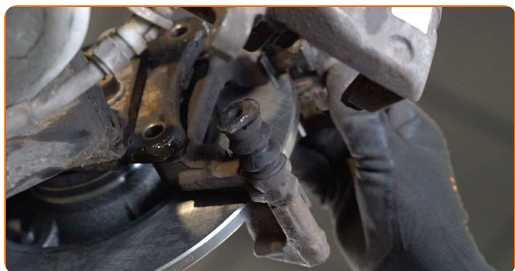
**26** Install the cap of the hub nut. Use a rubber mallet.



**27** Clean the mounting seats of the caliper and its bracket. Use a wire brush. Use WD-40 spray.



**28** Install the brake caliper bracket.



29

Tighten the brake caliper bracket. Use Torx T55. Use a torque wrench. Tighten it to 53 Nm torque.



30

Treat the brake caliper piston. Use a nylon cleaning brush. Use a brake cleaner.

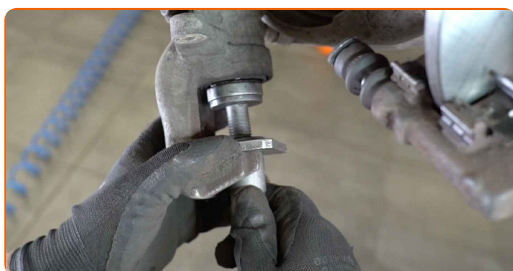


**AUTODOC recommends:**

- Replacement: wheel bearing – PEUGEOT 208 I Hatchback (CA\_, CC\_). After applying the spray, wait a few minutes.

31

Press in the brake caliper piston. Use brake caliper wind back tool.



**32**

Install the brake pads.



**33**

Install the brake caliper and fix it. Use a combination spanner #19. Use a drive socket #13. Use a torque wrench. Tighten it to 30 Nm torque.



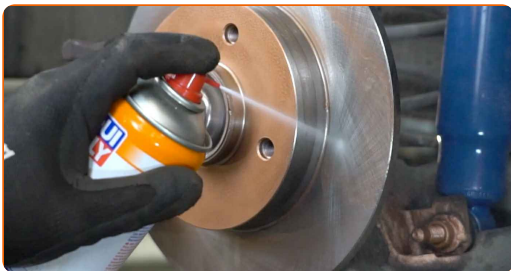
**34**

Treat the surface where the brake disc contacts the wheel rim. Use copper grease.



**35**

Clean the brake disk surface. Use a brake cleaner.



**AUTODOC recommends:**

- Replacement: wheel bearing – PEUGEOT 208 I Hatchback (CA\_, CC\_). After applying the spray, wait a few minutes.



**36** Install the wheel.



**AUTODOC recommends:**

- Warning! To avoid injury, hold the wheel while screwing in the fastening bolts on the car. PEUGEOT 208 I Hatchback (CA\_, CC\_)

**37** Screw in the wheel bolts. Use wheel impact socket #17.



**38** Lower the car and working in a cross order, tighten the wheel bolts. Use wheel impact socket #17. Use a torque wrench. Tighten it to 100 Nm torque.



**39**

Remove the jacks and chocks.



Replacement: wheel bearing – PEUGEOT 208 I Hatchback (CA\_, CC\_).  
AUTODOC experts recommend:

- Check the brake fluid level in the expansion tank and refill if necessary.

**40**

Tighten the brake fluid reservoir cap. Close the hood.

Replacement: wheel bearing – PEUGEOT 208 I Hatchback (CA\_, CC\_).  
AUTODOC experts recommend:

- Without starting the engine, press the brake pedal several times until you feel significant resistance.

**WELL DONE!** 

**VIEW MORE TUTORIALS**



# AUTODOC – TOP QUALITY AND AFFORDABLE CAR PARTS ONLINE

**AUTODOC MOBILE APP: GREAT DEALS AND CONVENIENT SHOPPING**



**A GREAT SELECTION OF SPARE PARTS FOR YOUR CAR**

**WHEEL BEARING: A WIDE SELECTION**

## **(i) DISCLAIMER:**

The document contains only general recommendations that may be useful for you when you perform repair or replacement work. AUTODOC shall not be liable for any loss, injury, damage of property occurring in the repair or replacement process due to incorrect use or misinterpretation of the provided information.

AUTODOC shall not be liable for any possible mistakes and uncertainties in this guide. The information provided is for information purposes only and cannot replace advice from specialists.

AUTODOC shall not be liable for incorrect or hazardous usage of equipment, tools and car parts. AUTODOC strongly recommends to be careful and observe the safety rules when performing repair or replacement works. Remember: usage of low quality auto parts does not guarantee you the appropriate level of road safety.

© Copyright 2023 – All the contents of this website, in particular texts, photographs and graphics, are protected by copyright. All rights, including reproduction, publication, editing and translation rights, are reserved by AUTODOC SE.