



How to change rear  
engine mounts on  
**PEUGEOT 207 SW** –  
replacement guide

## SIMILAR VIDEO TUTORIAL



This video shows the replacement procedure of a similar car part on another vehicle

### Important!

This replacement procedure can be used for:

PEUGEOT 207 SW 1.4, PEUGEOT 207 SW 1.4 16V, PEUGEOT 207 SW 1.6 16V

The steps may slightly vary depending on the car design.

This tutorial was created based on the replacement procedure for a similar car part on: PEUGEOT 207 Hatchback 1.6 16V VTi

REPLACEMENT: ENGINE MOUNTS – PEUGEOT 207 SW.  
TOOLS YOU'LL NEED:



- Wire brush
- WD-40 spray
- Copper grease
- Torque wrench
- Drive socket # 16
- Ratchet wrench
- Crow bar
- Hydraulic transmission jack
- Fender cover

**Buy tools**

Replacement: engine mounts – PEUGEOT 207 SW. AUTODOC recommends:

- All work should be done with the engine stopped.

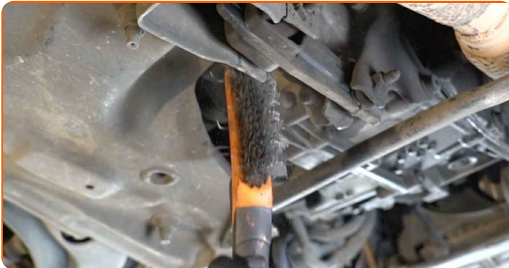
**CARRY OUT REPLACEMENT IN THE FOLLOWING ORDER:**

**1** Open the bonnet.

**2** Use a fender protection cover to prevent damaging paintwork and plastic parts of the car.

**3** Lift the car using a jack or place it over an inspection pit.

**4** Clean the engine mount fasteners. Use a wire brush. Use WD-40 spray.



**5** Support the gearbox. Use a hydraulic transmission jack.



Replacement: engine mounts – PEUGEOT 207 SW. Tip:

- Take care to prevent the gearbox from being unsupported (hanging).

- 6 Unscrew the fasteners that connect the engine mount to the car body. Use a drive socket #16. Use a ratchet wrench.



- 7 Remove the fastening bolt.



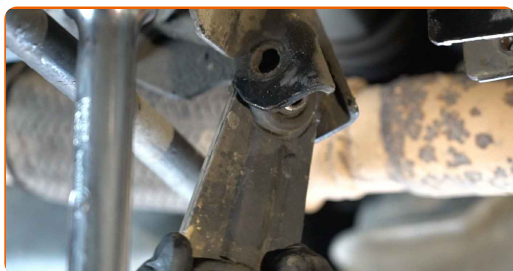
- 8 Unscrew the fastener connecting the engine mount to the gearbox housing. Use a drive socket #16. Use a ratchet wrench.



- 9 Remove the fastening bolt.



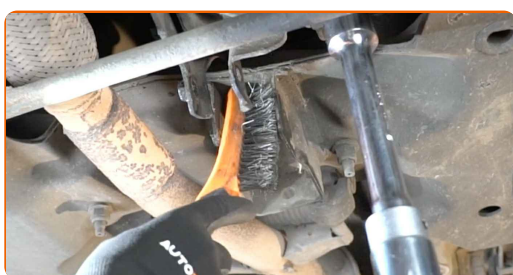
**10** Remove the engine mount.



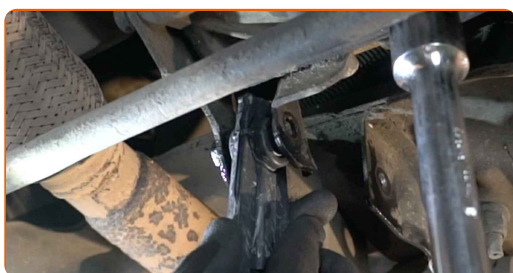
Replacement: engine mounts – PEUGEOT 207 SW. Professionals recommend:

- Carefully check the other engine mounts and replace them if necessary.

**11** Clean the mounting seat of the engine mount. Use a wire brush. Use WD-40 spray.



**12** Install the engine mount to its mounting seat.



**13** Install the fastening bolts. Use a crowbar.



- 14** Screw in the fasteners that connect the engine mount to the car body. Use a drive socket #16. Use a ratchet wrench.



- 15** Screw in the engine mount fastener that connects it to the gearbox housing. Use a drive socket #16. Use a ratchet wrench.



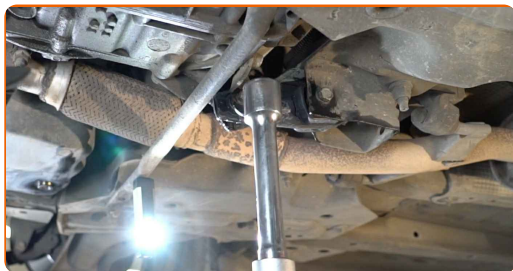
- 16** Tighten the fasteners that connect the engine mount to the car body. Use a drive socket #16. Use a torque wrench. Tighten it to 60 nm torque.



- 17** Tighten the fastening bolt connecting the engine mount to the gearbox housing. Use a drive socket #16. Use a torque wrench. Tighten it to 60 nm torque.



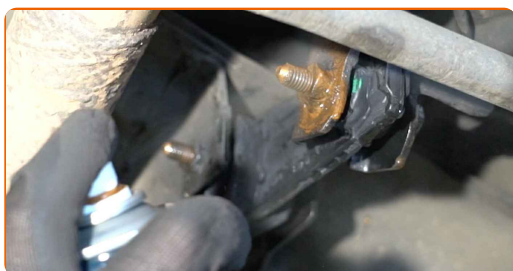
**18** Remove the support from under the gearbox.



**AUTODOC recommends:**

- PEUGEOT 207 SW – Do not lower the transmission jack sharply to avoid damaging components and mechanisms of the car.

**19** Treat the engine mount fasteners. Use copper grease.



**20** Lower the car.

**21** Remove the fender protection cover.

**22** Close the hood.

**WELL DONE!** 

**VIEW MORE TUTORIALS**



# AUTODOC – TOP QUALITY AND AFFORDABLE CAR PARTS ONLINE

**AUTODOC MOBILE APP: GREAT DEALS AND CONVENIENT SHOPPING**



**+ AUTODOC**

GET IT ON  
**Google Play**

Download on the  
**App Store**

**Download**

**A GREAT SELECTION OF SPARE PARTS FOR YOUR CAR**

**ENGINE MOUNTS: A WIDE SELECTION**

## **(i) DISCLAIMER:**

The document contains only general recommendations that may be useful for you when you perform repair or replacement work. AUTODOC shall not be liable for any loss, injury, damage of property occurring in the repair or replacement process due to incorrect use or misinterpretation of the provided information.

AUTODOC shall not be liable for any possible mistakes and uncertainties in this guide. The information provided is for information purposes only and cannot replace advice from specialists.

AUTODOC shall not be liable for incorrect or hazardous usage of equipment, tools and car parts. AUTODOC strongly recommends to be careful and observe the safety rules when performing repair or replacement works. Remember: usage of low quality auto parts does not guarantee you the appropriate level of road safety.

© Copyright 2023 – All the contents of this website, in particular texts, photographs and graphics, are protected by copyright. All rights, including reproduction, publication, editing and translation rights, are reserved by AUTODOC SE.