



How to change lambda  
sensor on **PEUGEOT 207**  
**CC** – replacement guide

## SIMILAR VIDEO TUTORIAL



This video shows the replacement procedure of a similar car part on another vehicle

### Important!

This replacement procedure can be used for:  
PEUGEOT 207 CC 1.6 16V, PEUGEOT 207 CC 1.6 16V Turbo

The steps may slightly vary depending on the car design.

This tutorial was created based on the replacement procedure for a similar car part on: PEUGEOT 207 Hatchback 1.6 16V VTi

REPLACEMENT: LAMBDA SENSOR – PEUGEOT 207 CC.  
 TOOLS YOU MIGHT NEED:



- Wire brush
- WD-40 spray
- Electronic spray
- Copper grease
- Torque wrench
- Combination spanner #22
- 22-mm oxygen sensor socket
- Ratchet wrench
- Thread tap
- Fender cover

**Buy tools**

Replacement: lambda sensor – PEUGEOT 207 CC. AUTODOC experts recommend:

- After replacing the oxygen sensor, clear the trouble code from the electronic control unit and let the ECU adapt itself to the new sensor.
- Before getting down to work, start the engine and let it warm up to operating temperature.
- Please note: all work on the car – PEUGEOT 207 CC – should be done with the engine switched off.

**CARRY OUT REPLACEMENT IN THE FOLLOWING ORDER:**

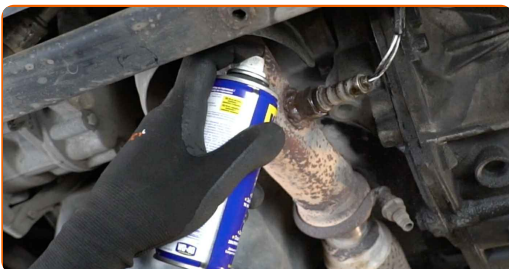
**1** Open the bonnet.

**2** Use a fender protection cover to prevent damaging paintwork and plastic parts of the car.

**3** Detach the oxygen sensor connector.



**4** Clean the oxygen sensor fastener. Use a wire brush. Use WD-40 spray.



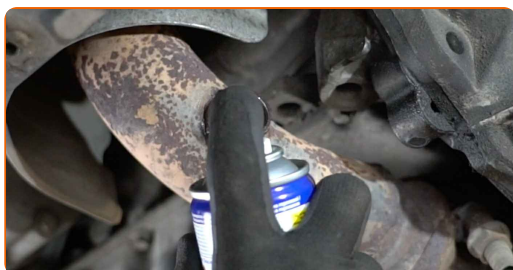
**5** Unscrew the oxygen sensor fastener. Use a 22-mm oxygen sensor socket. Use a ratchet wrench.



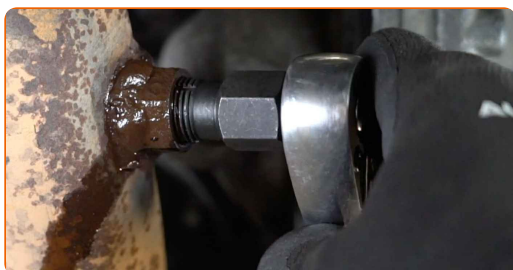
**6** Remove the oxygen sensor.



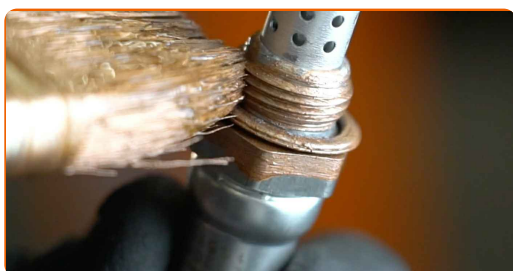
**7** Clean the oxygen sensor mounting seat. Use WD-40 spray.



**8** Cut the thread for the new oxygen sensor. Use a thread tap. Use a ratchet wrench.



**9** Treat the oxygen sensor. Use copper grease.



**10** Install the new oxygen sensor.



**11** Tighten the oxygen sensor fastener. Use a combination spanner #22. Use a torque wrench. Tighten it to 47 Nm torque.



**12** Treat the oxygen sensor connector. Use dielectric grease.



**13** Attach the oxygen sensor connector.



**14** Remove the fender protection cover.

15

Close the hood.

**WELL DONE!** 

**VIEW MORE TUTORIALS**

# AUTODOC – TOP QUALITY AND AFFORDABLE CAR PARTS ONLINE

**AUTODOC MOBILE APP: GREAT DEALS AND CONVENIENT SHOPPING**



**+ AUTODOC**

GET IT ON  
**Google Play**

 Download on the  
**App Store**

**Download**

**A GREAT SELECTION OF SPARE PARTS FOR YOUR CAR**

**LAMBDA SENSOR: A WIDE SELECTION**

## **DISCLAIMER:**

The document contains only general recommendations that may be useful for you when you perform repair or replacement work. AUTODOC shall not be liable for any loss, injury, damage of property occurring in the repair or replacement process due to incorrect use or misinterpretation of the provided information.

AUTODOC shall not be liable for any possible mistakes and uncertainties in this guide. The information provided is for information purposes only and cannot replace advice from specialists.

AUTODOC shall not be liable for incorrect or hazardous usage of equipment, tools and car parts. AUTODOC strongly recommends to be careful and observe the safety rules when performing repair or replacement works. Remember: usage of low quality auto parts does not guarantee you the appropriate level of road safety.

© Copyright 2022 – All the contents of this website, in particular texts, photographs and graphics, are protected by copyright. All rights, including reproduction, publication, editing and translation rights, are reserved by AUTODOC GmbH.