



How to change engine oil  
and filter on **Peugeot**  
**206 CC 2D** – replacement  
guide

## VIDEO TUTORIAL



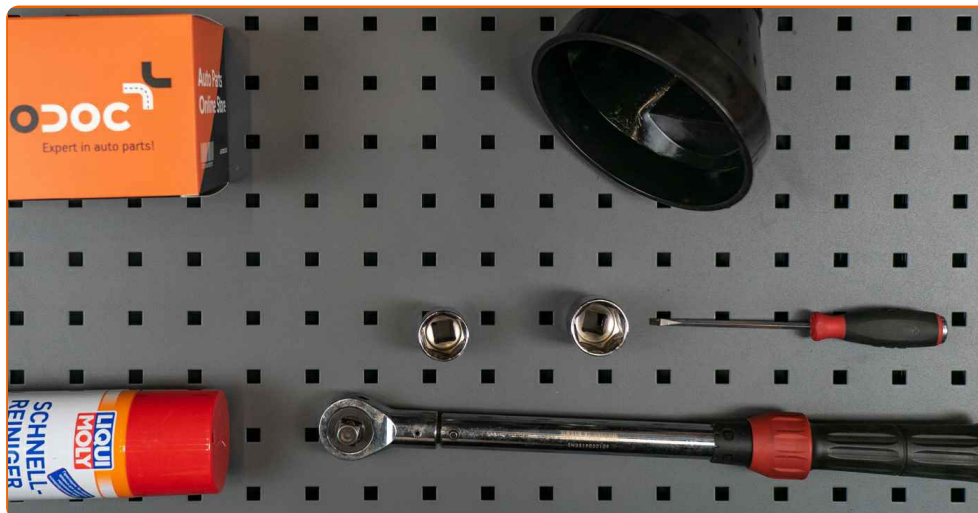
### Important!

This replacement procedure can be used for:

PEUGEOT 508 I (8D\_) Saloon 1.6 VTi, PEUGEOT 508 I SW (8E\_) 1.6 VTi, PEUGEOT 508 I (8D\_) Saloon 1.6 THP, PEUGEOT 508 I SW (8E\_) 1.6 THP, PEUGEOT 508 I (8D\_) Saloon 2.0 HDi, PEUGEOT 508 I SW (8E\_) 2.0 HDi, PEUGEOT 508 I (8D\_) Saloon 2.2 HDi, PEUGEOT 508 I SW (8E\_) 2.2 HDi, PEUGEOT 807 2.0 HDi, PEUGEOT 308 I Hatchback (4A, 4C) 1.6 BioFlex, PEUGEOT Expert II Tepee (VF3X) 2.0 HDi 120 4x4, PEUGEOT 308 I CC (4B) 1.6 THP, PEUGEOT Partner I Van 1.4, PEUGEOT Partner I Combispace 1.4, PEUGEOT Partner II Van 1.6, (+ 179)

The steps may slightly vary depending on the car design.

REPLACEMENT: ENGINE OIL AND FILTER – PEUGEOT  
206 CC 2D. TOOLS YOU'LL NEED:



- All-purpose cleaning spray
- Drive socket # 24
- Drive socket # 27
- Torque wrench
- Flat Screwdriver
- Oil drain pan
- Funnel
- Fender cover

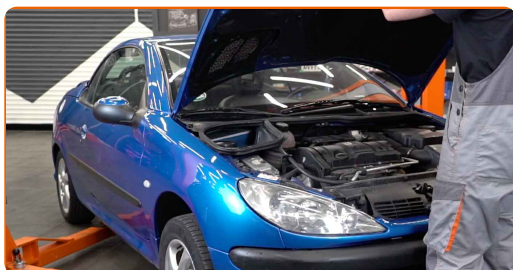
**BUY TOOLS**

Replacement: engine oil and filter – Peugeot 206 CC 2D. AUTODOC recommends:

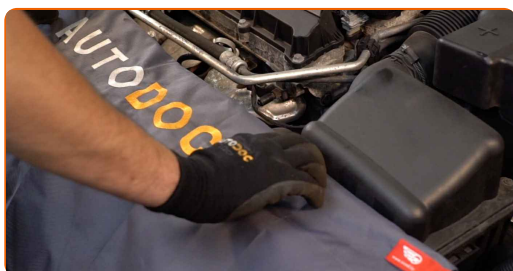
- Replace the oil filter every time when changing motor oil.
- All work should be done with the engine stopped.
- Wear gloves to prevent contact with hot liquid.

## REPLACEMENT: ENGINE OIL AND FILTER – PEUGEOT 206 CC 2D. USE THE FOLLOWING PROCEDURE:

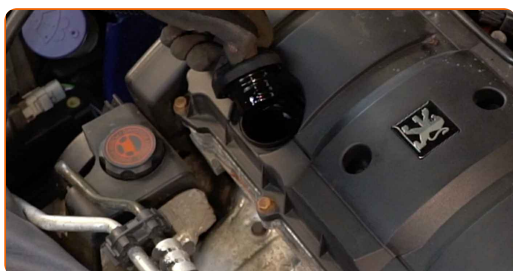
**1** Open the hood.



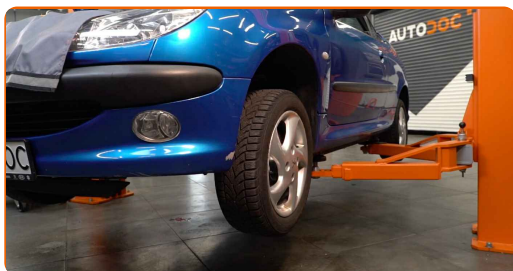
**2** Use a fender protection cover to prevent damaging paintwork and plastic parts of the car.



**3** Unscrew the oil filler plug.



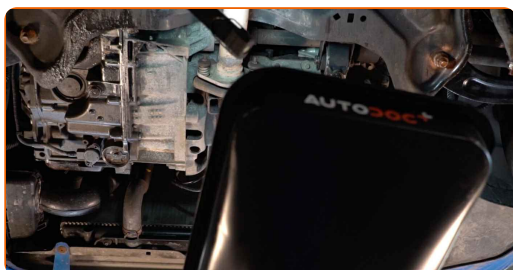
**4** Lift the car using a jack or place it over an inspection pit.



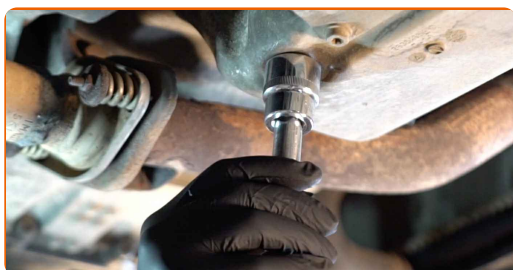
Replacement: engine oil and filter – Peugeot 206 CC 2D. AUTODOC experts recommend:

- The vehicle must be on even keel, and if it is at an angle, the drain plug must be at the lowest point.
- All work should be done with the engine stopped.

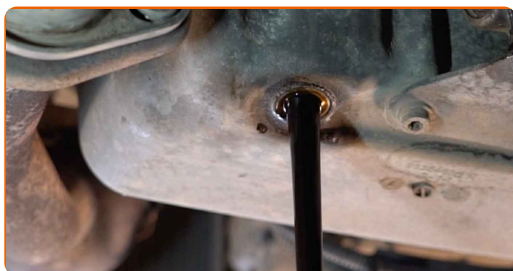
**5** Put a waste oil container with at least 5 l capacity under the drainage hole.



**6** Unscrew the drain plug. Use a drive socket #24.



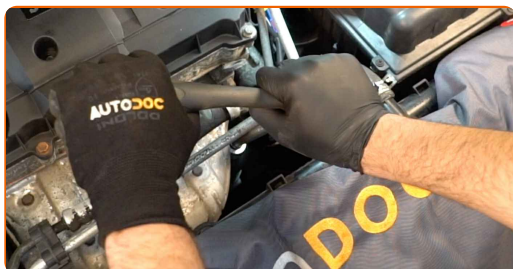
**7** Drain the used oil.



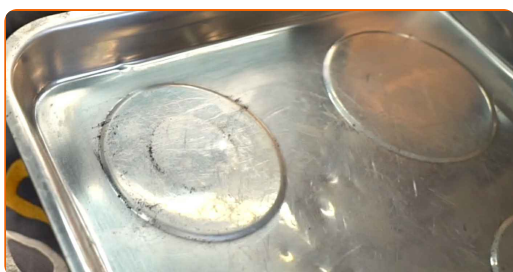
**Replacement: engine oil and filter – Peugeot 206 CC 2D. Tip from AUTODOC:**

- Caution! The oil may be hot.
- Wait until the oil has completely drained from the drainage hole.
- Move up the container. The oil starts to drain out of the drainage hole immediately after you have removed the oil filter.

**8** Unscrew the filter housing cap together with the old filter element. Use a drive socket #27.

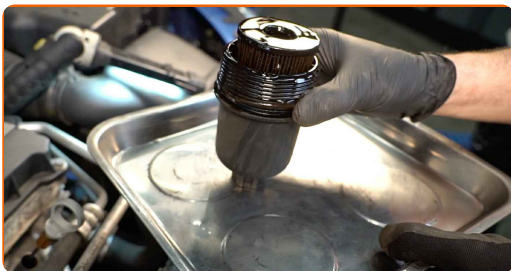


**9** Prepare a container for the old oil filter.

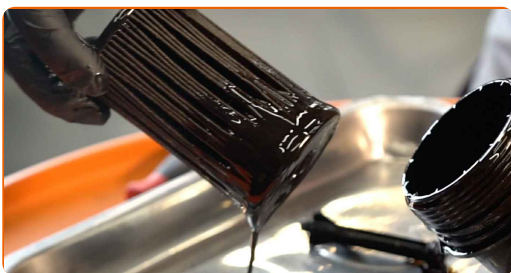




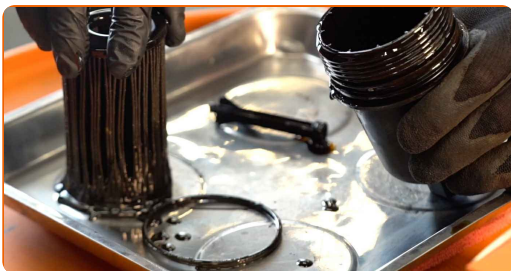
10 Put the old filter cartridge in the container.



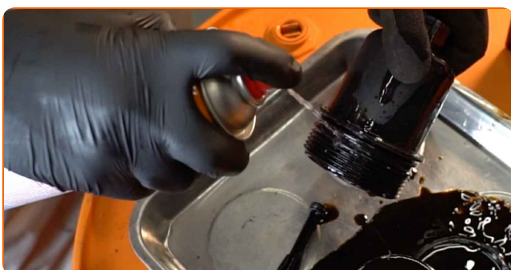
11 Remove the filter element from the filter housing.



12 Remove the oil filter cover O-ring. Use a flat screwdriver.



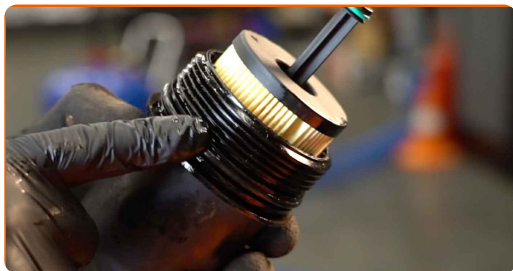
13 Clean the oil filter seat. Use all-purpose cleaning spray.



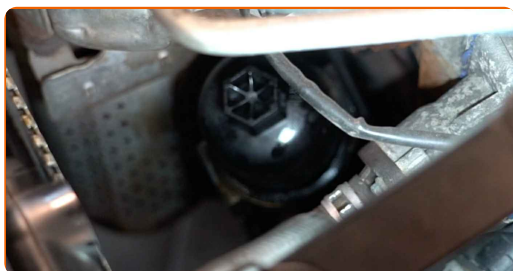
14 Install a new O-ring to its mounting seat on the filter cover.



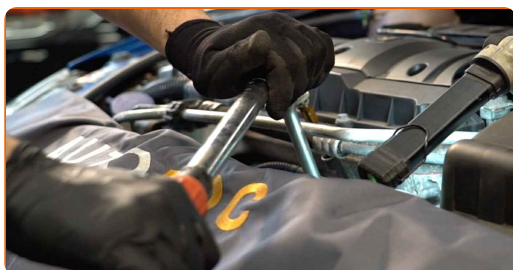
**15** Lubricate the rubber seal of the new filter with a little amount of fresh oil.



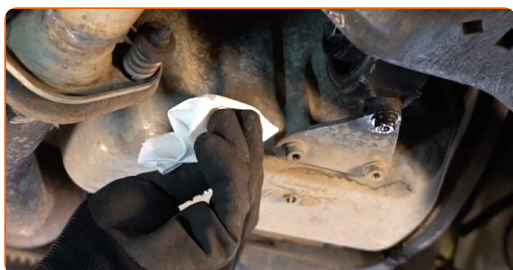
**16** Screw the new filter into its place.



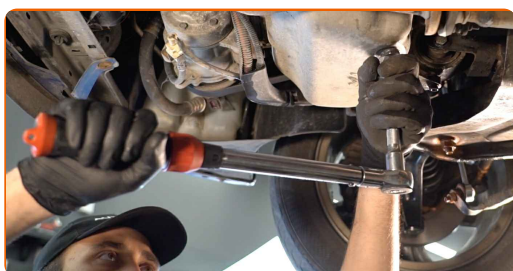
**17** Screw the cap. Use a drive socket #27. Use a torque wrench. Tighten it to 25 Nm torque.



**18** Clean the area of the oil pan drainage hole.



**19** Screw in the new drainage plug and tighten it. Use a drive socket #24. Use a torque wrench. Tighten it to 30 Nm torque.





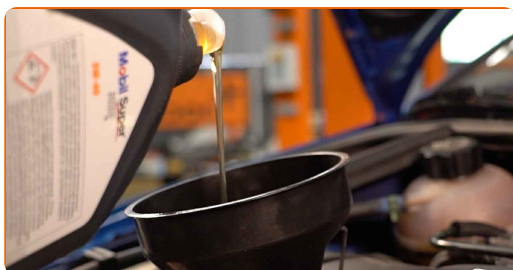
**20** Lower the car.



**21** Remove the oil filler cap. Insert the funnel.



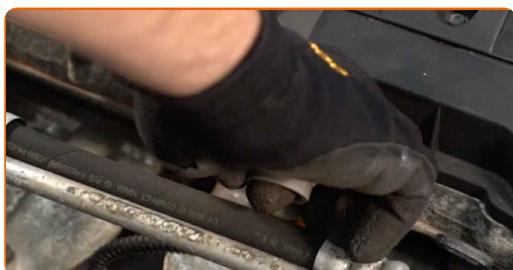
**22** Pour oil into the engine through the filler. Required amount of oil: 4.25 l.



Replacement: engine oil and filter – Peugeot 206 CC 2D. AUTODOC experts recommend:

- Use the oil recommended by the manufacturer.

**23** Check the oil level using the dipstick. Top up oil if necessary.

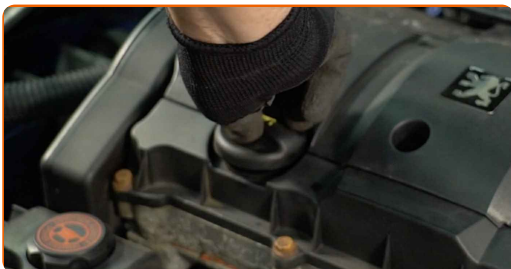


Please note!

- The oil level should be between the Min and Max marks.

24

Install the oil filler cap.



25

Tighten the oil filler cap.

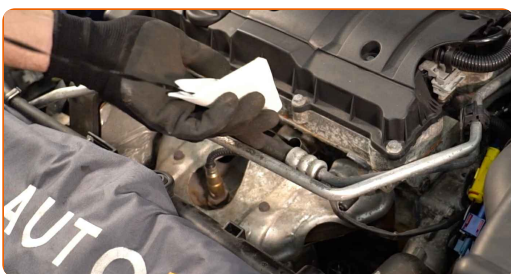


26

Run the engine for a few minutes. After the oil pressure warning light goes out, stop the engine.

27

Check the oil level 5 minutes after the stop of the engine operation using a dipstick and add oil if necessary.



Please note!

- The oil level should be between the Min and Max marks.
- Make sure that the oil filler cap is properly tightened.
- Check the threaded plug of the drainage hole and the oil filter seal for tightness. If necessary, carefully tighten them up.

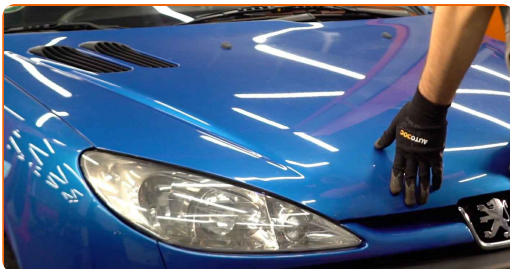
28

Remove the fender protection cover.



29

Close the hood.



### Replacement: engine oil and filter – Peugeot 206 CC 2D. Tip:

- Note that oil pressure warning light, which indicates insufficient pressure in the lubrication system, may be on for a longer time than usual. After a few seconds, the oil will fill all the channels, and the light will go out.
- To protect the environment from pollution, be sure to dispose of the used filters at special collection points.

**WELL DONE!** 

[VIEW MORE TUTORIALS](#)

# AUTODOC – TOP QUALITY AND AFFORDABLE CAR PARTS ONLINE

**AUTODOC MOBILE APP: GREAT DEALS AND CONVENIENT SHOPPING**



**+ AUTODOC**

GET IT ON  **Google Play**

 **Download on the App Store**

**Download**

**A GREAT SELECTION OF SPARE PARTS FOR YOUR CAR**

**BUY SPARE PARTS FOR PEUGEOT**

**OIL FILTER: A WIDE SELECTION**

**CHOOSE CAR PARTS FOR PEUGEOT 206 CC 2D**

**OIL FILTER FOR PEUGEOT: BUY NOW**

**OIL FILTER FOR PEUGEOT 206 CC 2D: THE BEST DEALS & OFFERS**

### **DISCLAIMER:**

The document contains only general recommendations that may be useful for you when you perform repair or replacement work. AUTODOC shall not be liable for any loss, injury, damage of property occurring in the repair or replacement process due to incorrect use or misinterpretation of the provided information.

AUTODOC shall not be liable for any possible mistakes and uncertainties in this guide. The information provided is for information purposes only and cannot replace advice from specialists.

AUTODOC shall not be liable for incorrect or hazardous usage of equipment, tools and car parts. AUTODOC strongly recommends to be careful and observe the safety rules when performing repair or replacement works. Remember: usage of low quality auto parts does not guarantee you the appropriate level of road safety.

© Copyright 2022 – All the contents of this website, in particular texts, photographs and graphics, are protected by copyright. All rights, including reproduction, publication, editing and translation rights, are reserved by AUTODOC GmbH.