



How to change rear
wheel bearing on
PEUGEOT 206 Van –
replacement guide

SIMILAR VIDEO TUTORIAL



This video shows the replacement procedure of a similar car part on another vehicle

Important!

This replacement procedure can be used for:

PEUGEOT 206 Van 1.4 HDi, PEUGEOT 206 Van 1.9 D, PEUGEOT 206 Van 1.1

The steps may slightly vary depending on the car design.

This tutorial was created based on the replacement procedure for a similar car part on: PEUGEOT 206 Hatchback (2A/C) 1.6

**REPLACEMENT: WHEEL BEARING – PEUGEOT 206 VAN.
TOOLS YOU NEED:**



- Wire brush
- WD-40 spray
- Brake cleaner
- All-purpose cleaning spray
- Copper grease
- Torx bit T30
- Drive socket # 19
- Drive socket # 32
- Wheel impact socket #19
- Ratchet wrench
- Torque wrench
- Tap wrench
- Hammer
- Round-nose pliers
- Flat chisel
- Rubber mallet
- Impact screwdriver
- 3-Arm Gear Puller
- Crow bar
- Wheel chock

Buy tools

Replacement: wheel bearing – PEUGEOT 206 Van. Professionals recommend:

- Do not re-use the bearing assembly of your PEUGEOT 206 Vancar.
- The wheel hub bearing replacement procedure is identical for both wheels on the same axle.
- All work should be done with the engine stopped.

**REPLACEMENT: WHEEL BEARING – PEUGEOT 206 VAN.
RECOMMENDED SEQUENCE OF STEPS:**

1 Secure the wheels with chocks.



2 Loosen the wheel mounting bolts. Use wheel impact socket #19.



3 Raise the rear of the car and secure on supports.

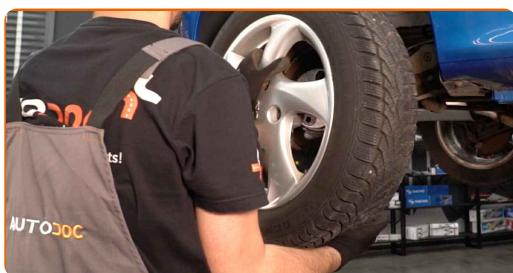
4 Unscrew the wheel bolts.



Replacement: wheel bearing – PEUGEOT 206 Van. AUTODOC recommends:

- To avoid injury, hold up the wheel when unscrewing the bolts.

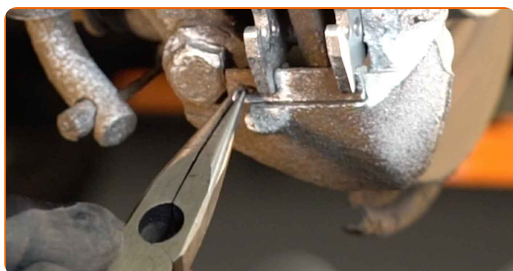
5 Remove the wheel.



6 Remove the retaining springs of the brake pads. Use a crowbar.

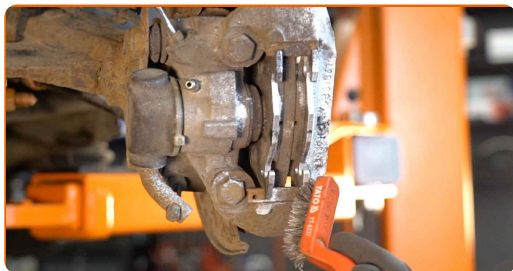


7 Remove the brake pad retaining pin. Use round-nose pliers.



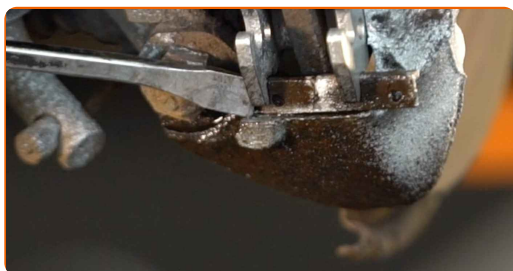
8

Clean the brake caliper fasteners. Use a wire brush. Use WD-40 spray.



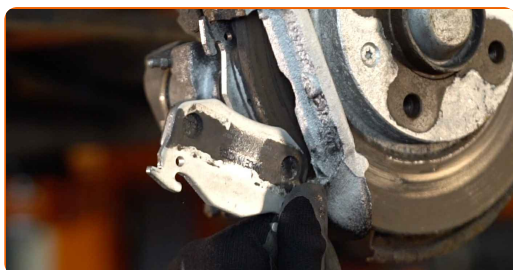
9

Remove the retainer of the brake pads. Use a crowbar. Use a rubber mallet.



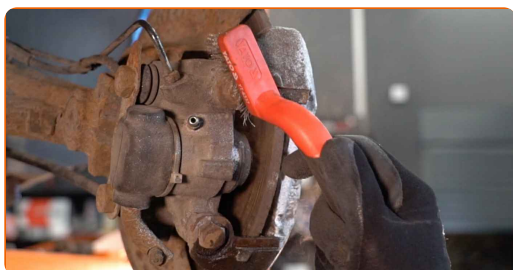
10

Remove the brake pads. Use a crowbar.



11

Clean the brake caliper fasteners. Use a wire brush. Use WD-40 spray.



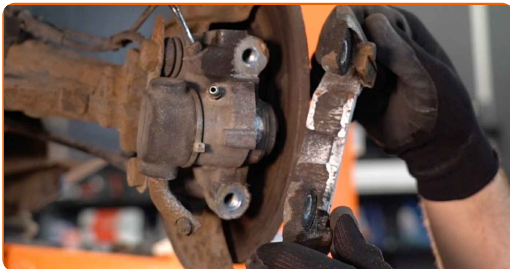
12

Unscrew the brake caliper fastening. Use a drive socket #19. Use a ratchet wrench.



13

Remove the brake caliper.

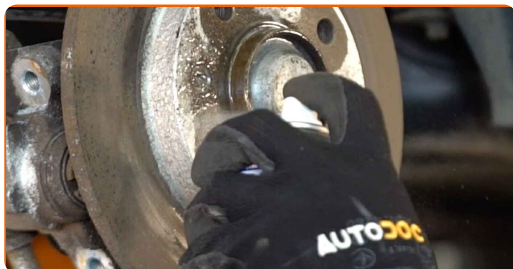


Replacement: wheel bearing – PEUGEOT 206 Van. Tip from AUTODOC:

- Tie the caliper to the suspension or to the body with a wire without disconnecting from the brake hose to prevent depressurization of the brake system.
- Make sure that the brake caliper is not hanging on the brake hose.
- Don't press the brake pedal after the brake caliper has been removed. As a result, the piston can fall out from the brake cylinder, and brake fluid leakage and depressurization of the system may occur.
- Check the brake caliper bracket, brake caliper guide pins and boots. Clean them. Replace, if necessary.

14

Clean the brake disc fasteners. Use a wire brush. Use WD-40 spray.



15

Unscrew the brake disc fastening. Use Torx T30. Use an impact screwdriver.

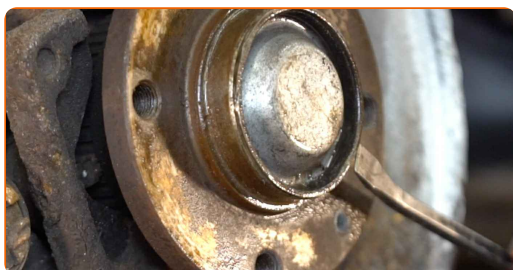


16

Remove the brake disc.

17

Remove the hub bearing protection cap. Use a crowbar. Use a hammer.

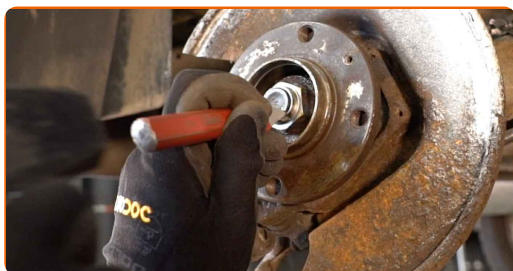


Replacement: wheel bearing – PEUGEOT 206 Van. AUTODOC experts recommend:

- Some cars are not equipped with wheel hub caps.

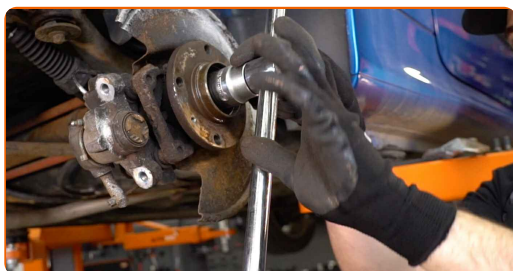
18

Unstake the wheel hub retaining nut. Use a flat metal-working chisel. Use a hammer.



19

Unscrew the wheel hub axle nut. Use a drive socket #32. Use a tap wrench.



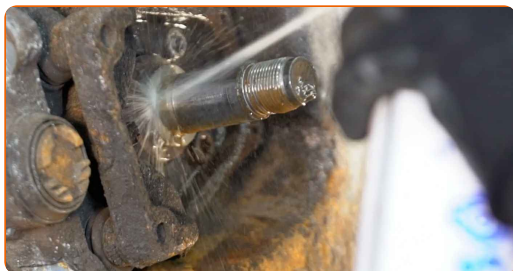
20

Remove the hub and the bearing together, since they are a sealed unit. Use 3-Arm Gear Puller.



21

Clean the hub bearing mounting seat. Use all-purpose cleaning spray.



22 Install the new wheel hub with a bearing.



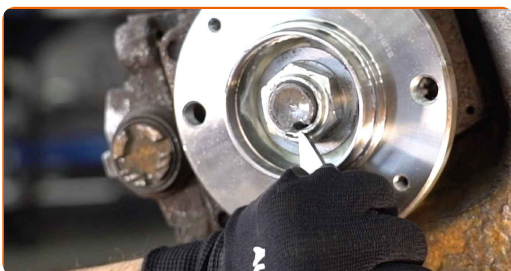
23 Tighten the hub. Use a drive socket #32. Use a torque wrench. Tighten it to 230 Nm torque.



Replacement: wheel bearing – PEUGEOT 206 Van. Tip:

- The wheel bearing unit must not tilt on the axle pin.

24 Restake the wheel hub retaining nut. Use a flat metal-working chisel. Use a hammer.



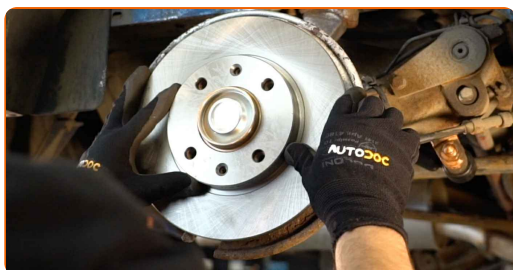
25 Install the hub bearing protection cap. Use a rubber mallet.



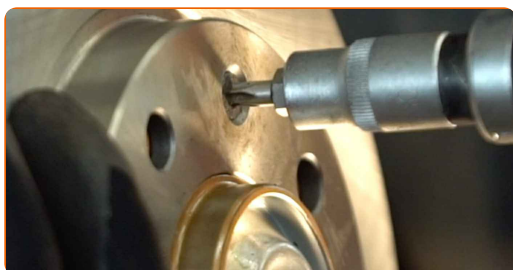
26 Clean the hub. Use a wire brush. Treat the contacting surface. Use copper grease.



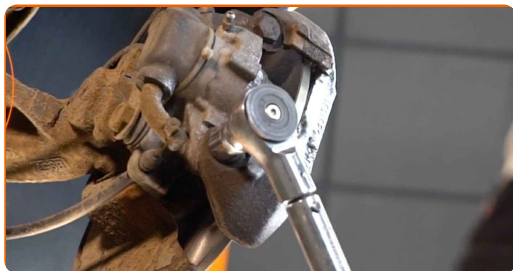
27 Install the brake disc.



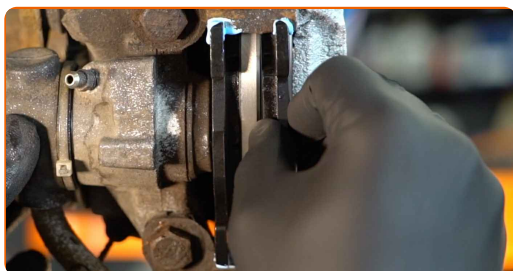
28 Tighten the brake disc fastening. Use Torx T30. Use a torque wrench. Tighten it to 9 Nm torque.



29 Install the brake caliper and fix it. Use a drive socket #19. Use a torque wrench. Tighten it to 110 Nm torque.



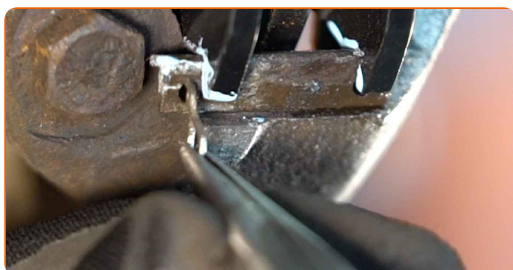
30 Install the brake pads.



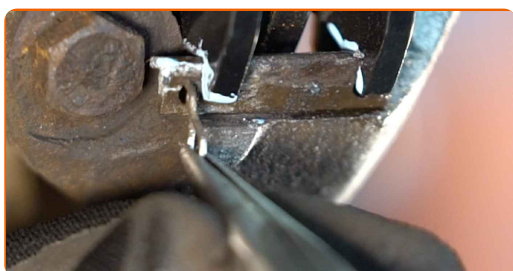
31 Install the retainer of the brake pads. Use a crowbar.



32 Install the brake pad retaining pin.

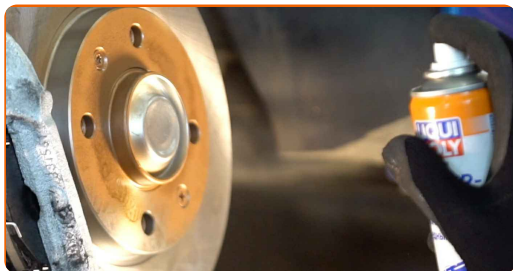


33 Install the retaining springs of the brake pads.



34

Treat the surface where the brake disc contacts the wheel rim. Use copper grease.



35

Clean the brake disk surface. Use a brake cleaner.



AUTODOC recommends:

- Replacement: wheel bearing – PEUGEOT 206 Van. After applying the spray, wait a few minutes.

36

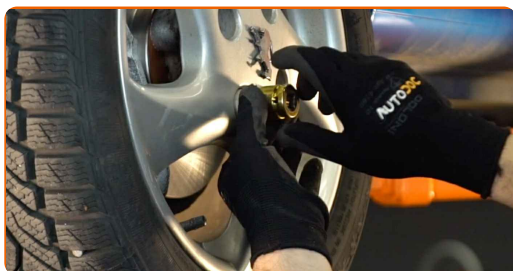
Install the wheel.



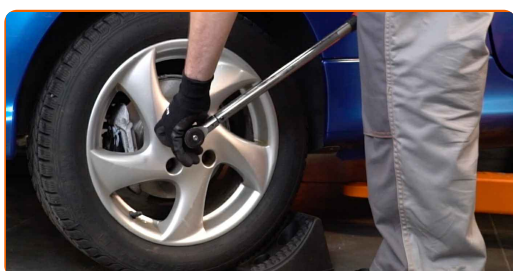
Replacement: wheel bearing – PEUGEOT 206 Van. Tip from AUTODOC experts:

- To avoid injury, hold up the wheel when screwing in the fastening bolts.

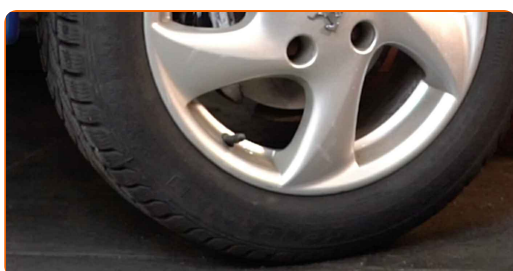
37 Screw in the wheel bolts. Use wheel impact socket #19.



38 Lower the car and working in a cross order, tighten the wheel bolts. Use a torque wrench. Tighten it to 100 Nm torque.



39 Remove the jacks and chocks.



WELL DONE! 

VIEW MORE TUTORIALS

AUTODOC – TOP QUALITY AND AFFORDABLE CAR PARTS ONLINE

AUTODOC MOBILE APP: GREAT DEALS AND CONVENIENT SHOPPING



+ AUTODOC

GET IT ON
Google Play

 Download on the
App Store

Download

A GREAT SELECTION OF SPARE PARTS FOR YOUR CAR

WHEEL BEARING: A WIDE SELECTION

DISCLAIMER:

The document contains only general recommendations that may be useful for you when you perform repair or replacement work. AUTODOC shall not be liable for any loss, injury, damage of property occurring in the repair or replacement process due to incorrect use or misinterpretation of the provided information.

AUTODOC shall not be liable for any possible mistakes and uncertainties in this guide. The information provided is for information purposes only and cannot replace advice from specialists.

AUTODOC shall not be liable for incorrect or hazardous usage of equipment, tools and car parts. AUTODOC strongly recommends to be careful and observe the safety rules when performing repair or replacement works. Remember: usage of low quality auto parts does not guarantee you the appropriate level of road safety.

© Copyright 2023 – All the contents of this website, in particular texts, photographs and graphics, are protected by copyright. All rights, including reproduction, publication, editing and translation rights, are reserved by AUTODOC SE.