



How to change front  
lower arm on **PEUGEOT**  
**206 Hatchback (2A/C)** –  
replacement guide

## SIMILAR VIDEO TUTORIAL



This video shows the replacement procedure of a similar car part on another vehicle

### Important!

This replacement procedure can be used for:

PEUGEOT 206 Hatchback (2A/C) 1.1 i, PEUGEOT 206 Hatchback (2A/C) 1.4 i, PEUGEOT 206 Hatchback (2A/C) 1.4 LPG, PEUGEOT 206 Hatchback (2A/C) 2.0 HDI 90, PEUGEOT 206 Hatchback (2A/C) 2.0 S16, PEUGEOT 206 Hatchback (2A/C) 1.4 HDi eco 70, PEUGEOT 206 Hatchback (2A/C) 2.0 RC, PEUGEOT 206 Hatchback (2A/C) 1.4 16V, PEUGEOT 206 Hatchback (2A/C) 1.6 HDi 110, PEUGEOT 206 Hatchback (2A/C) 1.4 HDi, PEUGEOT 206 Hatchback (2A/C) 1.4 Flex, PEUGEOT 206 Hatchback (2A/C) 1.6, PEUGEOT 206 Hatchback (2A/C) 1.6 8V

The steps may slightly vary depending on the car design.

This tutorial was created based on the replacement procedure for a similar car part on: PEUGEOT 206 Hatchback (2A/C) 1.6

**REPLACEMENT: FRONT LOWER ARM – PEUGEOT 206 HATCHBACK (2A/C). LIST OF THE TOOLS YOU'LL NEED:**



- Wire brush
- WD-40 spray
- Brake cleaner
- Copper grease
- Combination spanner #17
- Combination spanner #21
- Drive socket # 17
- Drive socket # 21
- Drive socket # 32
- Wheel impact socket #19
- Torque wrench
- Tap wrench
- Hammer
- Pin punch
- Flat chisel
- Crow bar
- Hydraulic transmission jack
- Fender cover
- Wheel chock

**Buy tools**

Replacement: front lower arm – PEUGEOT 206 Hatchback (2A/C). AUTODOC recommends:

- The replacement procedure is identical for the left and right lower control arms.
- Warning! Shut down the engine before starting any work – PEUGEOT 206 Hatchback (2A/C).

## CARRY OUT REPLACEMENT IN THE FOLLOWING ORDER:

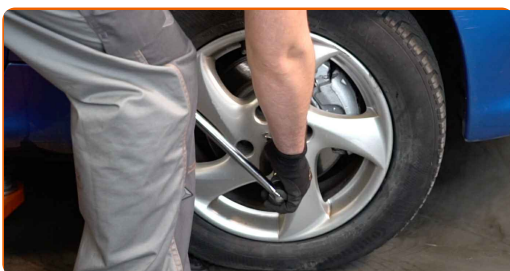
**1** Open the bonnet.

**2** Use a fender protection cover to prevent damaging paintwork and plastic parts of the car.

**3** Secure the wheels with chocks.



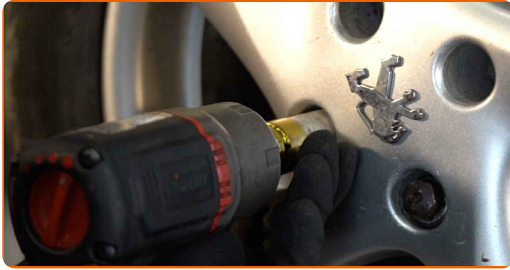
**4** Loosen the wheel mounting bolts. Use wheel impact socket #19.



**5** Raise the front of the car and secure on supports.

6

Unscrew the wheel bolts.

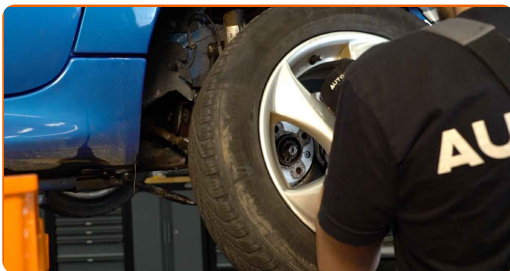


Replacement: front lower arm – PEUGEOT 206 Hatchback (2A/C). Tip:

- To avoid injury, hold up the wheel when unscrewing the bolts.

7

Remove the wheel.



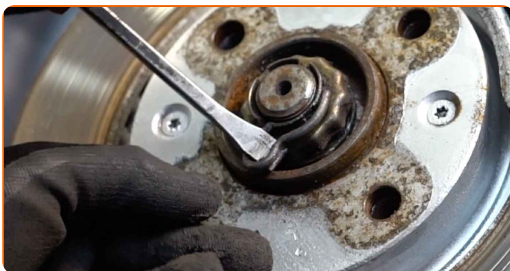
8

Clean the fastener of the driveshaft. Use a wire brush.



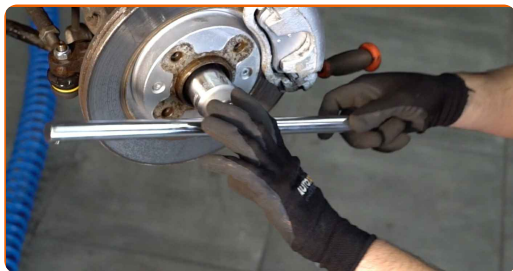
9

Remove the cotter pin. Use a crowbar.



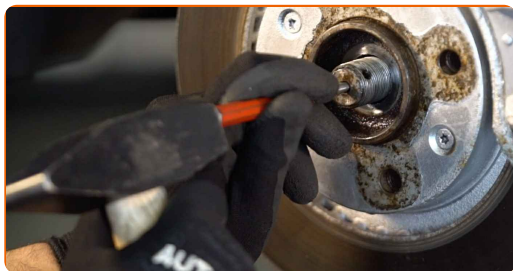
**10**

Loosen the fastener of the driveshaft. Use a drive socket #32. Use a tap wrench. Use a crowbar.



**11**

Detach the driveshaft from the steering knuckle. Use a pin punch. Use a hammer.



**12**

Clean the fastener connecting the ball joint to the steering knuckle. Use a wire brush. Use WD-40 spray.



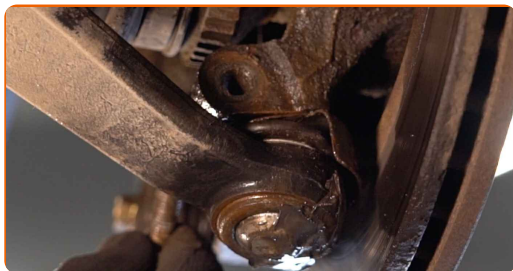
**13**

Unscrew the ball joint fastening to the steering knuckle. Use a combination spanner #17. Use a drive socket #17.

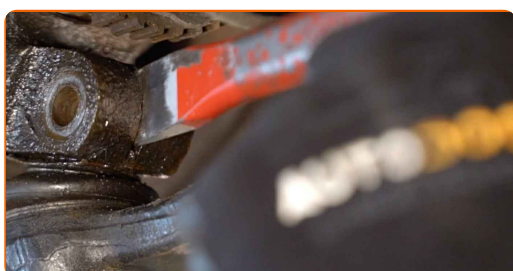




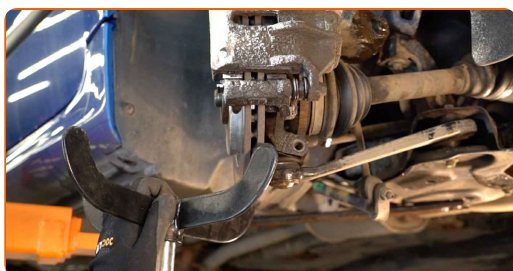
**14** Remove the fastening bolt.



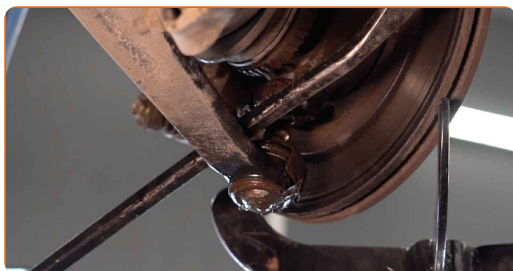
**15** Release the fastener that connects the control arm ball joint to the steering knuckle. Use a flat metal-working chisel. Use a hammer.



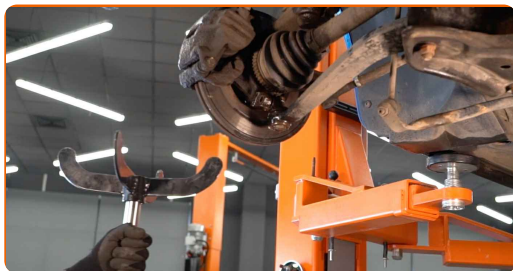
**16** Prop up the steering knuckle. Use a hydraulic transmission jack.



**17** Disconnect the lower arm from the steering knuckle. Use a crowbar.



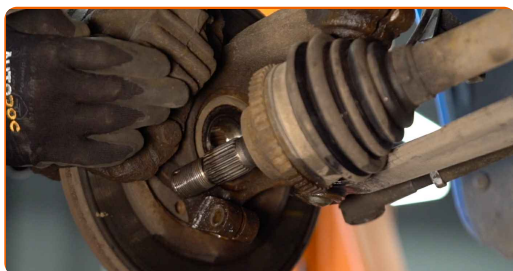
**18** Remove the support from under the steering knuckle.



**AUTODOC recommends:**

- Replacement: front lower arm – PEUGEOT 206 Hatchback (2A/C). Lower the transmission jack smoothly, without jerks, to avoid damaging components and mechanisms.

**19** Pull the drive shaft out of the steering knuckle and lifting it, tie to the body.



**Replacement: front lower arm – PEUGEOT 206 Hatchback (2A/C). AUTODOC recommends:**

- Make sure that the drive shaft is not unloaded (when the car is jacked).



20

Clean all joints of the arm. Use a wire brush. Use WD-40 spray.



Replacement: front lower arm – PEUGEOT 206 Hatchback (2A/C). Tip from AUTODOC:

- After applying the spray, wait a few minutes.

21

Unscrew the front arm fastener. Use a drive socket #21. Use a tap wrench.

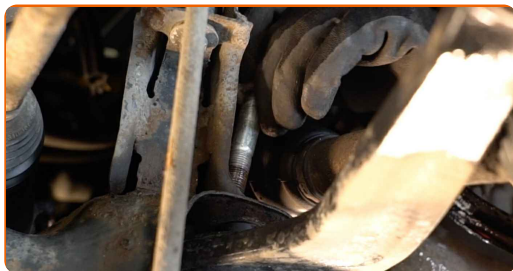


22

Unscrew the rear arm fastener. Use a drive socket #21. Use a tap wrench.



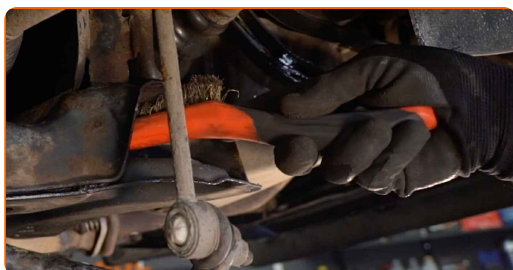
23 Remove the fastening bolts.



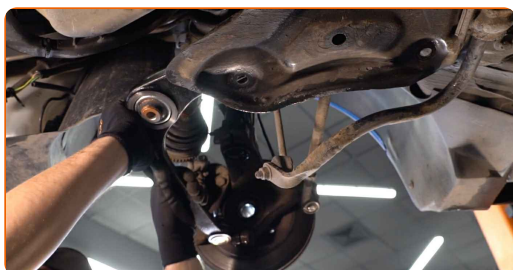
24 Remove the arm.



25 Clean the mounting seats and the thread of the suspension arm. Use a wire brush. Use WD-40 spray.



26 Install a new arm.



Replacement: front lower arm – PEUGEOT 206 Hatchback (2A/C). AUTODOC experts recommend:

- During the installation process, use only new bolts and nuts.
- Do not damage the ball joint cover.

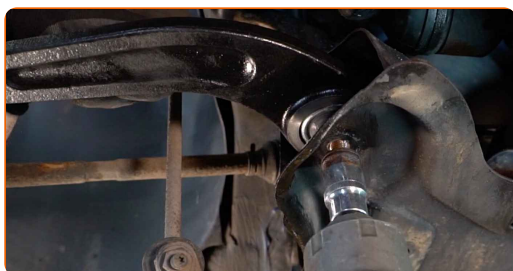
27

Install the control arm fasteners.



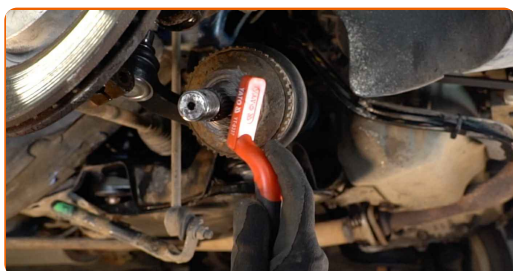
28

Screw the front arm fastener. Use a combination spanner #21. Use a drive socket #21.

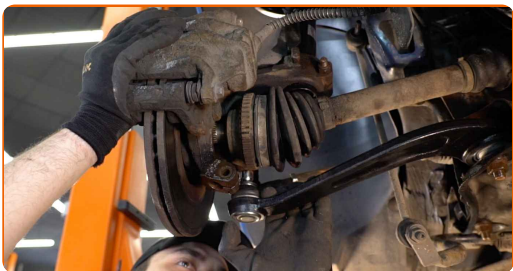


29

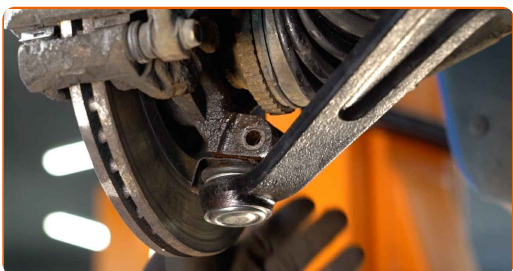
Clean the splines of the drive shaft CV joint. Use a wire brush. Use WD-40 spray.



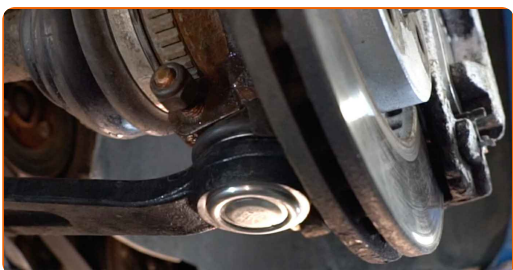
**30** Install the drive shaft.



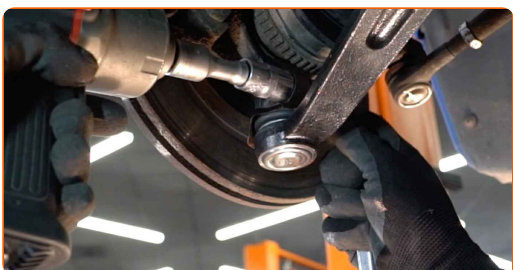
**31** Connect the lower arm to the steering knuckle.



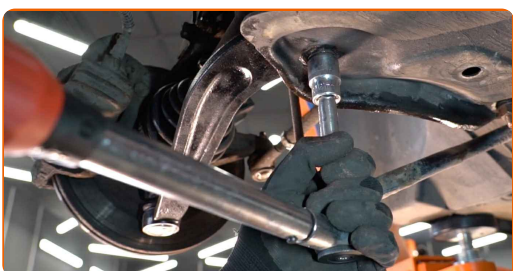
**32** Install the fastening bolt.



**33** Screw the fasteners of the ball joint. Use a drive socket #17. Use a combination spanner #17.



**34** Tighten the front fastener connecting the control arm to the subframe. Use a drive socket #21. Use a torque wrench. Tighten it to 111 Nm torque.



- 35** Tighten the rear fastener of the control arm. Use a drive socket #21. Use a torque wrench. Tighten it to 111 nm torque.



- 36** Tighten the ball joint fastener. Use a combination spanner #17. Use a drive socket #17. Use a torque wrench. Tighten it to 40 nm torque.

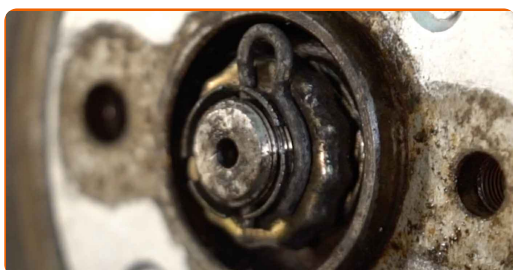


- 37** Treat all joints of the arm. Use copper grease.

- 38** Tighten the drive shaft nut. Use a drive socket #32. Use a torque wrench. Tighten it to 245 Nm torque.



- 39** Install the cotter pin. Use a crowbar.





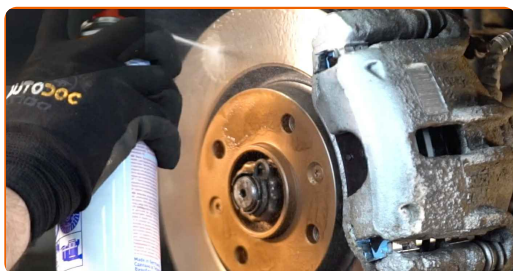
40

Treat the surface where the brake disc contacts the wheel rim. Use copper grease.



41

Clean the brake disk surface. Use a brake cleaner.

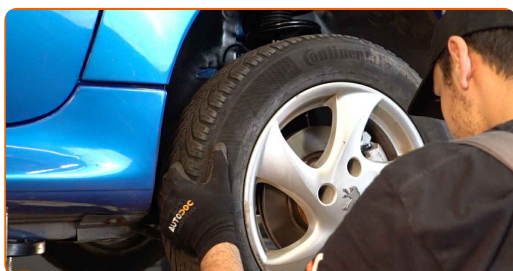


**AUTODOC recommends:**

- Replacement: front lower arm – PEUGEOT 206 Hatchback (2A/C). After applying the spray, wait a few minutes.

42

Install the wheel.

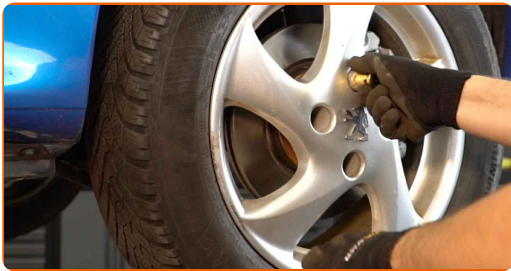


**Replacement: front lower arm – PEUGEOT 206 Hatchback (2A/C). Tip:**

- To avoid injury, hold up the wheel when screwing in the fastening bolts.



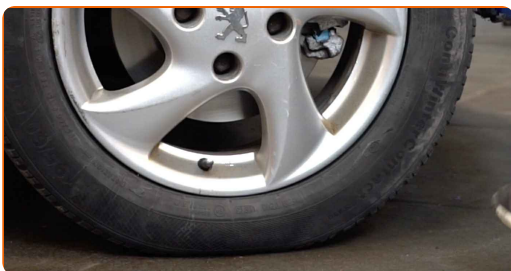
**43** Screw in the wheel bolts. Use wheel impact socket #19.



**44** Lower the car and working in a cross order, tighten the wheel bolts. Use a torque wrench. Tighten it to 100 nm torque.



**45** Remove the jacks and chocks.



**46** Remove the fender protection cover.

**47** Close the hood.

**WELL DONE!** 

**VIEW MORE TUTORIALS**

# AUTODOC – TOP QUALITY AND AFFORDABLE CAR PARTS ONLINE

**AUTODOC MOBILE APP: GREAT DEALS AND CONVENIENT SHOPPING**



**+ AUTODOC**

GET IT ON  
 **Google Play**

Download on the  
 **App Store**

**Download**

**A GREAT SELECTION OF SPARE PARTS FOR YOUR CAR**

**CONTROL ARM: A WIDE SELECTION**

## **DISCLAIMER:**

The document contains only general recommendations that may be useful for you when you perform repair or replacement work. AUTODOC shall not be liable for any loss, injury, damage of property occurring in the repair or replacement process due to incorrect use or misinterpretation of the provided information.

AUTODOC shall not be liable for any possible mistakes and uncertainties in this guide. The information provided is for information purposes only and cannot replace advice from specialists.

AUTODOC shall not be liable for incorrect or hazardous usage of equipment, tools and car parts. AUTODOC strongly recommends to be careful and observe the safety rules when performing repair or replacement works. Remember: usage of low quality auto parts does not guarantee you the appropriate level of road safety.

© Copyright 2023 – All the contents of this website, in particular texts, photographs and graphics, are protected by copyright. All rights, including reproduction, publication, editing and translation rights, are reserved by AUTODOC SE.