



How to change air filter
on **PEUGEOT 2008**
Estate (CU_) –
replacement guide

SIMILAR VIDEO TUTORIAL



This video shows the replacement procedure of a similar car part on another vehicle

i Important!

This replacement procedure can be used for:

PEUGEOT 2008 Estate (CU_) 1.2 VTi, PEUGEOT 2008 Estate (CU_) 1.2 PureTech 82

The steps may slightly vary depending on the car design.

This tutorial was created based on the replacement procedure for a similar car part on: PEUGEOT 208 I Hatchback (CA_, CC_) 1.2

REPLACEMENT: AIR FILTER – PEUGEOT 2008 ESTATE (CU_). TOOLS YOU MIGHT NEED:



- Drive socket # 7
- Drive socket # 10
- Ratchet wrench
- Phillips screwdriver
- Microfibre towel
- Fender cover

[Buy tools](#)

Replacement: air filter – PEUGEOT 2008 Estate (CU_). AUTODOC experts recommend:

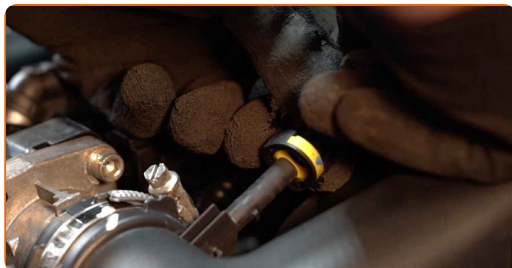
- Follow the terms, recommendations and requirements of the part operation provided by the manufacturer.
- All work should be done with the engine stopped.

REPLACEMENT: AIR FILTER – PEUGEOT 2008 ESTATE (CU_). RECOMMENDED SEQUENCE OF STEPS:

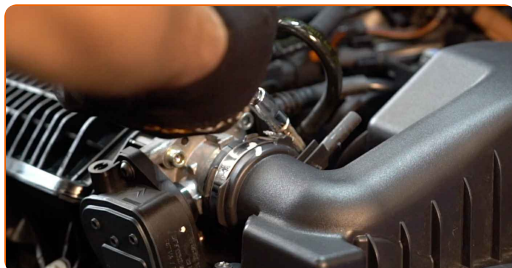
1 Open the bonnet.

2 Use a fender protection cover to prevent damaging paintwork and plastic parts of the car.

3 Disconnect the crankcase ventilation hose from the air duct.



4 Unscrew the clamp fastening the engine air filter housing to the throttle body. Use a drive socket #7.



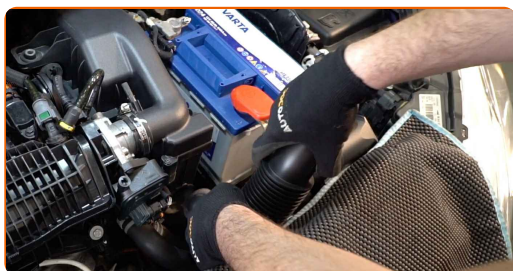
5

Unscrew the filter housing fastening bolts. Use a drive socket #10. Use a ratchet wrench.



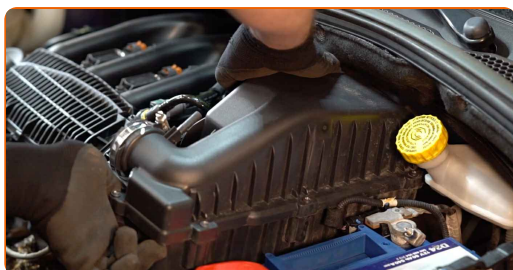
6

Disconnect the air intake pipe from the air filter housing.



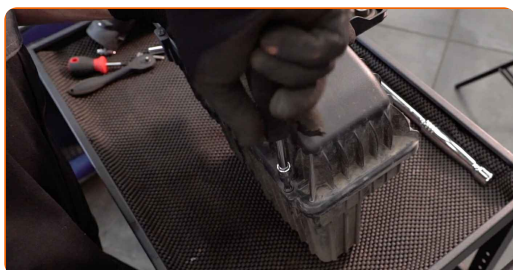
7

Remove the air filter housing.



8

Undo the fastening screws of the air filter cover. Use a Phillips screwdriver.



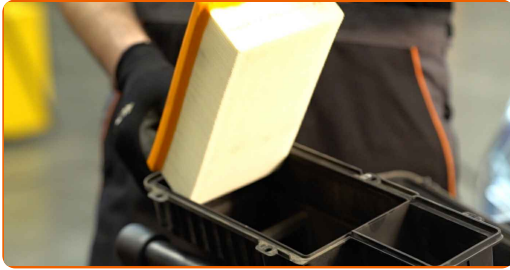
9

Take off the filter lid.



10

Remove the filter element from the filter housing.



11

Clean the air filter cover and housing.



Replacement: air filter – PEUGEOT 2008 Estate (CU_). Tip from AUTODOC experts:

- Before cleaning the air filter cover and housing, cover the air duct parts, mass airflow sensor (if available), throttle valve with a clean cloth.

12

Insert a new filter element into the filter housing. Make sure that the filter edge fits tight to the housing.



AUTODOC recommends:

- Replacement: air filter – PEUGEOT 2008 Estate (CU_). Be sure to position the filtering element correctly. Avoid misalignment.
- Take care to only use quality filters.
- During installation, make sure to prevent dust and dirt from getting into the air filter housing.

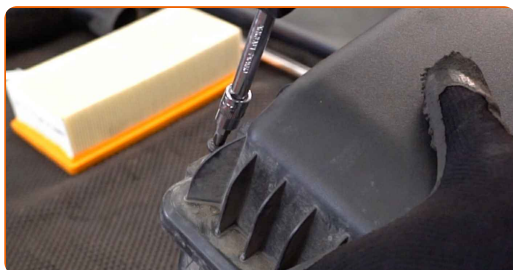
13

Reinstall the air filter cover. Fasten it.



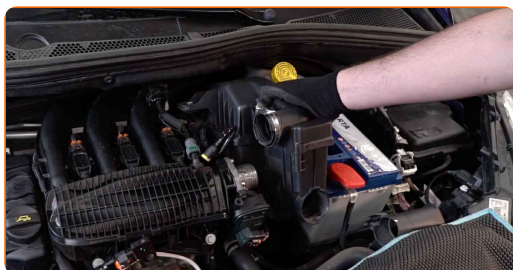
14

Screw in the fastening screws of the air filter cover. Use a Phillips screwdriver.



15

Reinstall the air filter housing.



16

Screw the filter housing fastening bolts. Use a drive socket #10. Use a ratchet wrench.



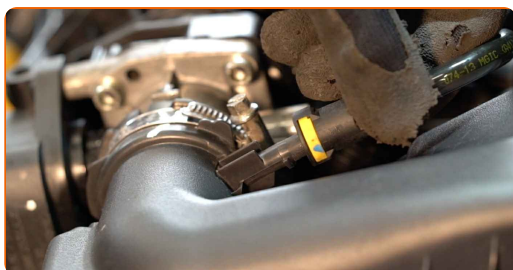
17

Tighten the clamp fastening the engine air filter housing to the throttle body. Use a drive socket #7.



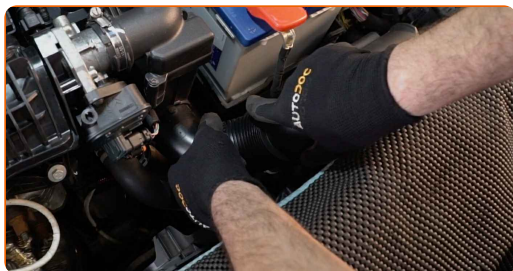
18

Connect the crankcase ventilation hose to the air duct.



19

Connect the air intake pipe to the air filter housing.



20

Remove the fender protection cover.

21

Close the hood.

WELL DONE! 

VIEW MORE TUTORIALS

AUTODOC – TOP QUALITY AND AFFORDABLE CAR PARTS ONLINE

AUTODOC MOBILE APP: GREAT DEALS AND CONVENIENT SHOPPING





 GET IT ON
Google Play

 Download on the
App Store

Download

A GREAT SELECTION OF SPARE PARTS FOR YOUR CAR

AIR FILTER: A WIDE SELECTION

DISCLAIMER:

The document contains only general recommendations that may be useful for you when you perform repair or replacement work. AUTODOC shall not be liable for any loss, injury, damage of property occurring in the repair or replacement process due to incorrect use or misinterpretation of the provided information.

AUTODOC shall not be liable for any possible mistakes and uncertainties in this guide. The information provided is for information purposes only and cannot replace advice from specialists.

AUTODOC shall not be liable for incorrect or hazardous usage of equipment, tools and car parts. AUTODOC strongly recommends to be careful and observe the safety rules when performing repair or replacement works. Remember: usage of low quality auto parts does not guarantee you the appropriate level of road safety.

© Copyright 2023 – All the contents of this website, in particular texts, photographs and graphics, are protected by copyright. All rights, including reproduction, publication, editing and translation rights, are reserved by AUTODOC SE.