



How to change fuel filter
on **PEUGEOT 106 II**
Hatchback (1A, 1C) –
replacement guide

SIMILAR VIDEO TUTORIAL



This video shows the replacement procedure of a similar car part on another vehicle

Important!

This replacement procedure can be used for:

PEUGEOT 106 II Hatchback (1A, 1C) 1.0 i, PEUGEOT 106 II Hatchback (1A, 1C) 1.1 i, PEUGEOT 106 II Hatchback (1A, 1C) 1.4 i, PEUGEOT 106 II Hatchback (1A, 1C) 1.6 i, PEUGEOT 106 II Hatchback (1A, 1C) 1.6 S16, PEUGEOT 106 II Hatchback (1A, 1C) 1.1 BiFuel

The steps may slightly vary depending on the car design.

This tutorial was created based on the replacement procedure for a similar car part on: PEUGEOT 206 Hatchback (2A/C) 1.6

REPLACEMENT: FUEL FILTER – PEUGEOT 106 II HATCHBACK (1A, 1C). LIST OF THE TOOLS YOU'LL NEED:



- All-purpose cleaning spray
- Fuel line pliers
- Crow bar
- Fluid container

Buy tools

Replacement: fuel filter – PEUGEOT 106 II Hatchback (1A, 1C). Tip from AUTODOC experts:

- Ensure adequate ventilation of the workplace. Fuel vapors are poisonous.
- Please note: all work on the car – PEUGEOT 106 II Hatchback (1A, 1C) – should be done with the engine switched off.

CARRY OUT REPLACEMENT IN THE FOLLOWING ORDER:

1 Open the fuel door.

2 Unscrew the fuel filler cap.



3 Lift the car using a jack or place it over an inspection pit.

4 Prepare a container for fluids.



5 Clean the fasteners of the fuel supply lines. Use all-purpose cleaning spray.



6 Remove the fuel lines from the car body.



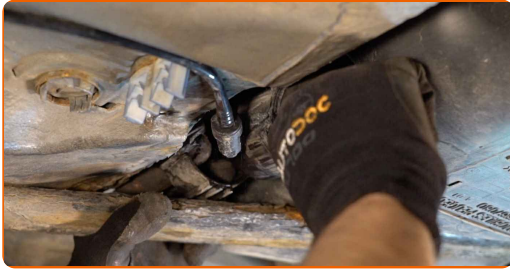
7 Squeeze the clips and detach the fuel supply lines from the fuel filter housing. Use fuel line pliers. Use a crowbar.



Replacement: fuel filter – PEUGEOT 106 II Hatchback (1A, 1C). Tip from AUTODOC experts:

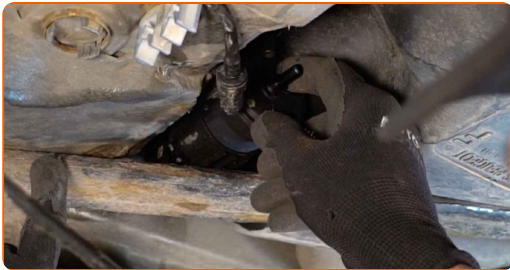
- Be careful! Fuel may leak from the filter housing and hoses.

8 Remove the fuel filter. Use a crowbar.



9 Put the old filter cartridge in the container.

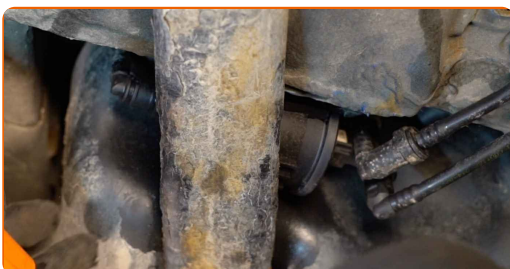
10 Install a new fuel filter.



Replacement: fuel filter – PEUGEOT 106 II Hatchback (1A, 1C). AUTODOC experts recommend:

- Make sure that the fuel filter is positioned correctly. Consider the fuel flow direction mark.
- During installation, take care to prevent dust and dirt from getting into the fuel filter housing.
- Take care to only use quality filters.

11 Connect the fuel supply lines to the fuel filter.



12

Install the fuel lines on the car body.



13

Take the fluid container away from under the fuel filter.



14

Lower the car.

15

Tighten the fuel filler cap.



16

Close the fuel door.

Replacement: fuel filter – PEUGEOT 106 II Hatchback (1A, 1C). Tip from AUTODOC:

- Before starting off, switch the ignition on and off several times. This should be done to activate the fuel pump to make it pump fuel through the fuel system.

17

Run the engine for a few minutes. This is necessary in order to make sure that the component operates properly.

18

Shut off the engine.

Replacement: fuel filter – PEUGEOT 106 II Hatchback (1A, 1C). Tip from AUTODOC experts:

- To protect the environment from pollution, be sure to dispose of the used filters at special collection points.

WELL DONE! 

[VIEW MORE TUTORIALS](#)

AUTODOC – TOP QUALITY AND AFFORDABLE CAR PARTS ONLINE

AUTODOC MOBILE APP: GREAT DEALS AND CONVENIENT SHOPPING



+ AUTODOC

GET IT ON
Google Play

Download on the
App Store

Download

A GREAT SELECTION OF SPARE PARTS FOR YOUR CAR

FUEL FILTER: A WIDE SELECTION

DISCLAIMER:

The document contains only general recommendations that may be useful for you when you perform repair or replacement work. AUTODOC shall not be liable for any loss, injury, damage of property occurring in the repair or replacement process due to incorrect use or misinterpretation of the provided information.

AUTODOC shall not be liable for any possible mistakes and uncertainties in this guide. The information provided is for information purposes only and cannot replace advice from specialists.

AUTODOC shall not be liable for incorrect or hazardous usage of equipment, tools and car parts. AUTODOC strongly recommends to be careful and observe the safety rules when performing repair or replacement works. Remember: usage of low quality auto parts does not guarantee you the appropriate level of road safety.

© Copyright 2023 – All the contents of this website, in particular texts, photographs and graphics, are protected by copyright. All rights, including reproduction, publication, editing and translation rights, are reserved by AUTODOC SE.