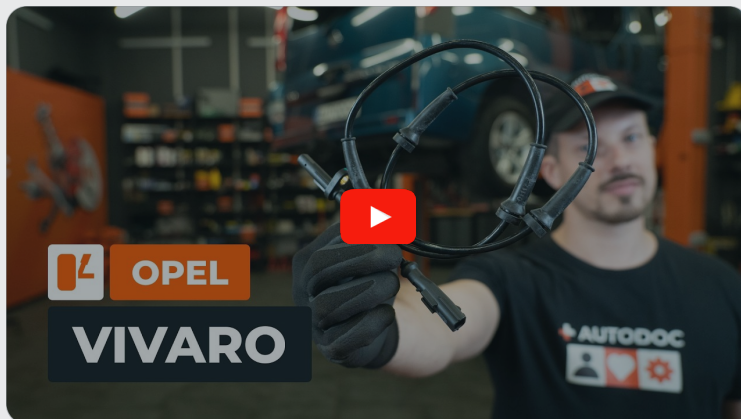




How to change rear ABS
sensor on **OPEL Vivaro A**
Platform / Chassis (X83)
– replacement guide

SIMILAR VIDEO TUTORIAL



This video shows the replacement procedure of a similar car part on another vehicle

i Important!

This replacement procedure can be used for:

OPEL Vivaro A Platform / Chassis (X83) 1.9 Di, OPEL Vivaro A Platform / Chassis (X83) 2.5 DTi, OPEL Vivaro A Platform / Chassis (X83) 2.0 CDTI, OPEL Vivaro A Platform / Chassis (X83) 2.0 ECOTEC, OPEL Vivaro A Platform / Chassis (X83) 2.5 CDTI, OPEL Vivaro A Platform / Chassis (X83) 1.9 DTI

The steps may slightly vary depending on the car design.

This tutorial was created based on the replacement procedure for a similar car part on: OPEL Vivaro A Combi (X83) 2.5 CDTI (F7, J7, A07)

REPLACEMENT: ABS SENSOR – OPEL VIVARO A PLATFORM / CHASSIS (X83). TOOLS YOU NEED:



- Wire brush
- WD-40 spray
- All-purpose cleaning spray
- Electronic spray
- Torque wrench
- T30 Torx bit
- Ratchet wrench or power tool for removal/installation of threaded fasteners
- Mounting lever
- Slotted screwdriver
- Wire bore brush drill attachment
- Car lift or jack with jack stands, and wheel chocks

[Buy tools](#)

Replacement: ABS sensor – OPEL Vivaro A Platform / Chassis (X83).
AUTODOC recommends:

- All the work should be carried out with the ignition switched off.

REPLACEMENT: ABS SENSOR – OPEL VIVARO A PLATFORM / CHASSIS (X83). RECOMMENDED SEQUENCE OF STEPS:

1

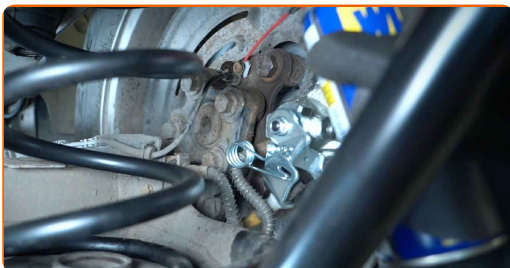
Raise the vehicle or place it over an inspection pit.

Warning!

- If you are using a jack, make sure the car is parked on a hard, flat surface.
- Make sure to additionally secure the car with jack stands.

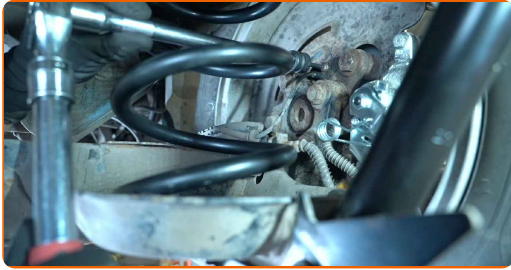
2

Clean the ABS sensor fastener. Use a wire brush. Use WD-40 spray.



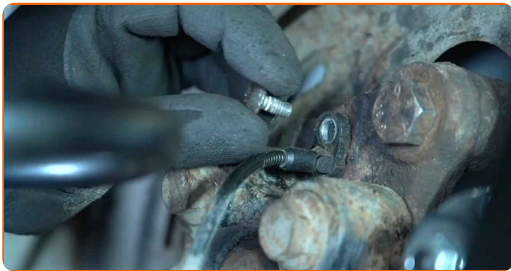
3

Unscrew the ABS sensor fastener. Use a T30 Torx bit. Use a ratchet wrench.



4

Remove the fastening bolt.



5

Remove the ABS sensor. Use a mounting lever.



6.1

Detach the ABS sensor wiring.



6.2

Detach the vehicle connector from the ABS sensor connector.



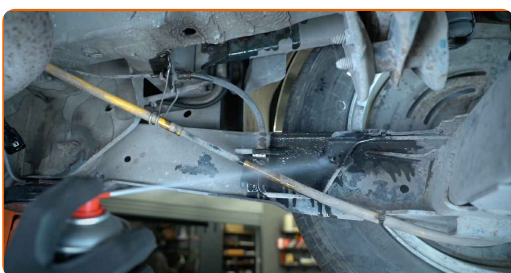
6.3

Remove the ABS sensor connector from its mounting seat on the vehicle. Use a slotted screwdriver.



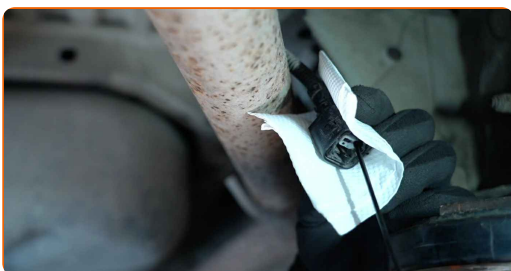
7

Clean the ABS sensor mounting seat. Use a wire brush. Use an all-purpose cleaning spray. Use a wire bore brush drill attachment.



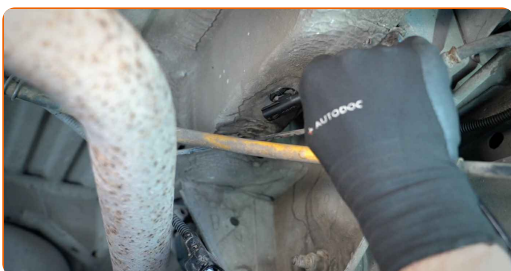
8

Treat the vehicle connector of the ABS sensor. Use an electronic spray.



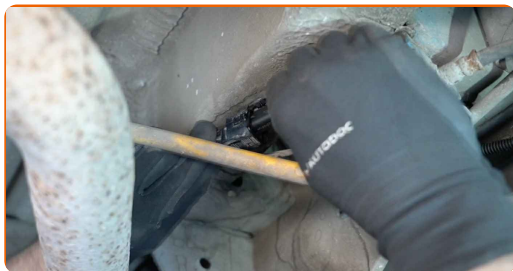
9

Secure the ABS sensor connector in its mounting seat on the vehicle.



10

Attach the vehicle connector to the ABS sensor connector.



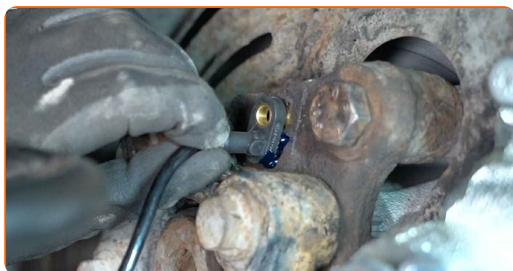
11

Secure the ABS sensor wiring.



12

Install the ABS sensor.



Replacement: ABS sensor – OPEL Vivaro A Platform / Chassis (X83).
Professionals recommend:

- To prevent the sensor from sticking, apply a small amount of the ABS sensor grease to its mounting surface before installing it. Avoid getting any grease on the sensor's magnetic tip.

13 Install the fastening bolt.



14 Tighten the ABS sensor fastener. Use a T30 Torx bit. Use a torque wrench. Tightening torque: 8 N·m.



15 Lower the vehicle.

16 Check that the new component is working.

WELL DONE! 

[VIEW MORE TUTORIALS](#)

AUTODOC – TOP QUALITY AND AFFORDABLE CAR PARTS ONLINE

AUTODOC MOBILE APP: GREAT DEALS AND CONVENIENT SHOPPING



+ AUTODOC

GET IT ON
Google Play

Download on the
App Store

Download

A GREAT SELECTION OF SPARE PARTS FOR YOUR CAR

ABS SENSOR: A WIDE SELECTION

DISCLAIMER:

The document contains only general recommendations that may be useful for you when you perform repair or replacement work. AUTODOC shall not be liable for any loss, injury, damage of property occurring in the repair or replacement process due to incorrect use or misinterpretation of the provided information.

AUTODOC shall not be liable for any possible mistakes and uncertainties in this guide. The information provided is for information purposes only and cannot replace advice from specialists.

AUTODOC shall not be liable for incorrect or hazardous usage of equipment, tools and car parts. AUTODOC strongly recommends to be careful and observe the safety rules when performing repair or replacement works. Remember: usage of low quality auto parts does not guarantee you the appropriate level of road safety.

© Copyright 2025 – All the contents of this website, in particular texts, photographs and graphics, are protected by copyright. All rights, including reproduction, publication, editing and translation rights, are reserved by AUTODOC SE.