



How to change front anti
roll bar links on **OPEL**
Combo C Box Body /
Estate – replacement
guide

SIMILAR VIDEO TUTORIAL



This video shows the replacement procedure of a similar car part on another vehicle

Important!

This replacement procedure can be used for:

OPEL Combo C Box Body / Estate 1.7 DI 16V, OPEL Combo C Box Body / Estate 1.6, OPEL Combo C Box Body / Estate 1.7 DTI 16V, OPEL Combo C Box Body / Estate 1.4 16V, OPEL Combo C Box Body / Estate 1.3 CDTI 16V, OPEL Combo C Box Body / Estate 1.6 CNG 16V, OPEL Combo C Box Body / Estate 1.7 CDTI 16V

The steps may slightly vary depending on the car design.

This tutorial was created based on the replacement procedure for a similar car part on: OPEL Corsa C Hatchback (X01) 1.3 CDTI (F08, F68)

**REPLACEMENT: ANTI ROLL BAR LINKS – OPEL COMBO
C BOX BODY / ESTATE. TOOLS YOU MIGHT NEED:**



- Wire brush
- WD-40 spray
- Brake cleaner
- Copper grease
- Combination spanner #17
- Combination spanner #18
- Drive socket # 8
- Drive socket # 19
- Wheel impact socket #17
- Ratchet wrench
- Torque wrench
- Wheel chock

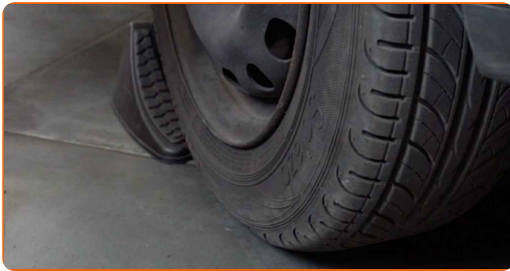
Buy tools

AUTODOC recommends:

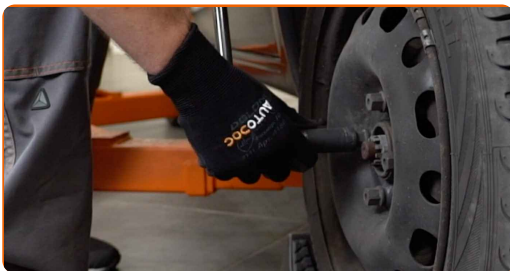
- Replace the stabiliser links on OPEL Combo C Box Body / Estate in pairs.
- The replacement procedure is identical for both stabiliser links on the same axle.
- All work should be done with the engine stopped.

REPLACEMENT: ANTI ROLL BAR LINKS – OPEL COMBO C BOX BODY / ESTATE. RECOMMENDED SEQUENCE OF STEPS:

1 Secure the wheels with chocks.



2 Loosen the wheel mounting bolts. Use wheel impact socket #17.



3 Raise the front of the car and secure on supports.

4

Unscrew the wheel bolts.

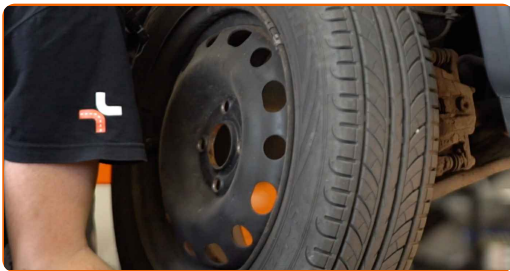


AUTODOC recommends:

- Important! Hold the wheel while unscrewing the fastening bolts. OPEL Combo C Box Body / Estate

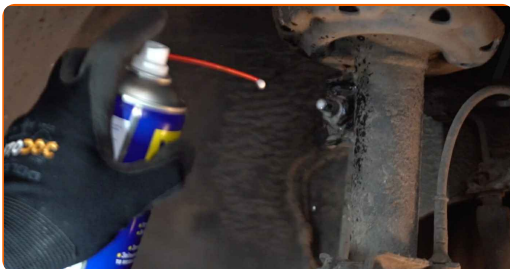
5

Remove the wheel.



6

Clean the stabiliser link fasteners. Use a wire brush. Use WD-40 spray.



- 7** Unscrew the fastener connecting the stabilizer link to the stabilizer bar. Use a combination spanner #18. Use a drive socket #8. Use a ratchet wrench.



- 8** Unscrew the fastener connecting the stabilizer link to the shock strut. Use a combination spanner #18. Use a drive socket #8. Use a ratchet wrench.



- 9** Remove the stabilizer rod.



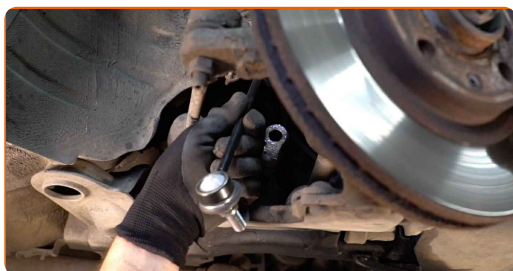
Replacement: anti roll bar links – OPEL Combo C Box Body / Estate. Tip from AUTODOC experts:

- Examine stabiliser bushes. Replace them if needed.

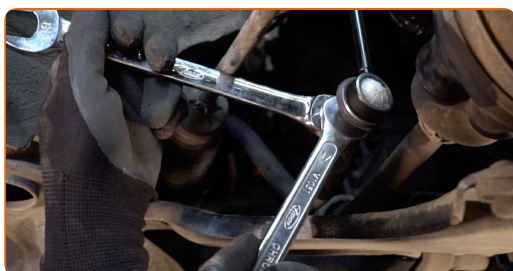
10 Clean the mounting seats of the stabiliser link. Use a wire brush. Use WD-40 spray.



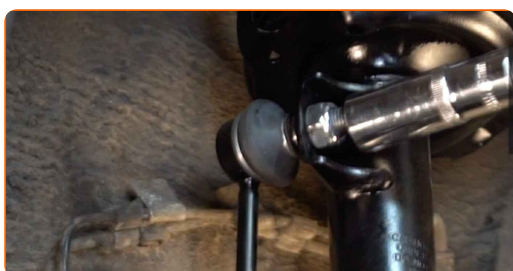
11 Install a new rod, tighten the fasteners.



12 Tighten the fastener connecting the stabilizer link to the stabilizer bar. Use a combination spanner #17. Use a drive socket #19. Use a torque wrench. Tighten it to 60 Nm torque.



13 Tighten the fastener connecting the stabilizer link to the shock strut. Use a drive socket #19. Use a torque wrench. Tighten it to 60 Nm torque.



14 Treat all joints of the stabiliser link. Use copper grease.

15

Treat the surface where the brake disc contacts the wheel rim. Use copper grease.



16

Clean the brake disc surface. Use a brake cleaner.



AUTODOC recommends:

- Replacement: anti roll bar links – OPEL Combo C Box Body / Estate. After applying the spray, wait a few minutes.

17

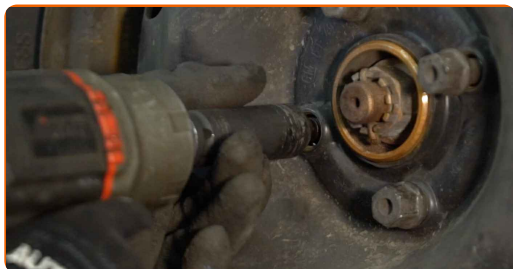
Install the wheel.



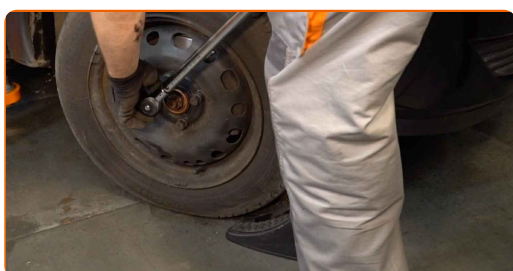
AUTODOC recommends:

- To avoid injury, hold up the wheel when screwing in the fastening bolts.

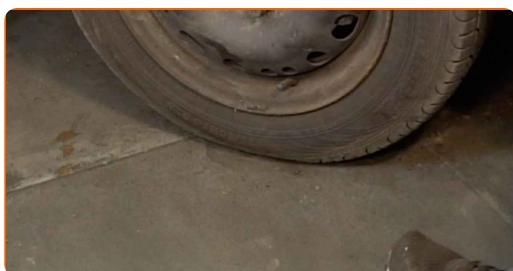
18 Screw in the wheel bolts. Use wheel impact socket #17.



19 Lower the car and working in a cross order, tighten the wheel bolts. Use a torque wrench. Tighten it to 110 nm torque.



20 Remove the jacks and chocks.



WELL DONE! 

VIEW MORE TUTORIALS

AUTODOC – TOP QUALITY AND AFFORDABLE CAR PARTS ONLINE

AUTODOC MOBILE APP: GREAT DEALS AND CONVENIENT SHOPPING



+ AUTODOC

GET IT ON
 **Google Play**

 **Download on the App Store**

Download

A GREAT SELECTION OF SPARE PARTS FOR YOUR CAR

ANTI ROLL BAR LINKS: A WIDE SELECTION

DISCLAIMER:

The document contains only general recommendations that may be useful for you when you perform repair or replacement work. AUTODOC shall not be liable for any loss, injury, damage of property occurring in the repair or replacement process due to incorrect use or misinterpretation of the provided information.

AUTODOC shall not be liable for any possible mistakes and uncertainties in this guide. The information provided is for information purposes only and cannot replace advice from specialists.

AUTODOC shall not be liable for incorrect or hazardous usage of equipment, tools and car parts. AUTODOC strongly recommends to be careful and observe the safety rules when performing repair or replacement works. Remember: usage of low quality auto parts does not guarantee you the appropriate level of road safety.

© Copyright 2022 – All the contents of this website, in particular texts, photographs and graphics, are protected by copyright. All rights, including reproduction, publication, editing and translation rights, are reserved by AUTODOC GmbH.