



How to change lambda sensor on **OPEL Astra G Classic Caravan (F35)** – replacement guide

SIMILAR VIDEO TUTORIAL



This video shows the replacement procedure of a similar car part on another vehicle

Important!

This replacement procedure can be used for:

OPEL Astra G Classic Caravan (F35) 1.4 16V, OPEL Astra G Classic Caravan (F35) 1.6

The steps may slightly vary depending on the car design.

This tutorial was created based on the replacement procedure for a similar car part on: OPEL Astra H Saloon (A04) 1.6 (L69)

REPLACEMENT: LAMBDA SENSOR – OPEL ASTRA G CLASSIC CARAVAN (F35). LIST OF THE TOOLS YOU'LL NEED:



- Wire brush
- WD-40 spray
- Electronic spray
- High-temperature ceramic grease
- Torque wrench
- Combination spanner #22
- Flare nut wrench #22
- Ratchet wrench
- Thread tap
- Fender cover

Buy tools

Replacement: lambda sensor – OPEL Astra G Classic Caravan (F35).
 AUTODOC experts recommend:

- After replacing the oxygen sensor, clear the trouble code from the electronic control unit and let the ECU adapt itself to the new sensor.
- Before getting down to work, start the engine and let it warm up to operating temperature.
- Please note: all work on the car – OPEL Astra G Classic Caravan (F35) – should be done with the engine switched off.

CARRY OUT REPLACEMENT IN THE FOLLOWING ORDER:

1 Open the hood.

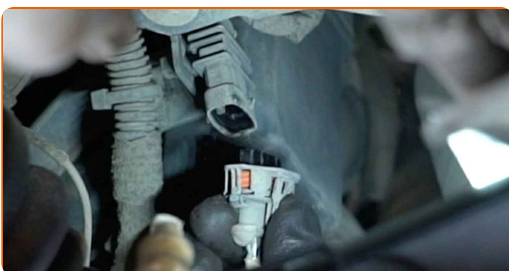
2 Use a fender protection cover to prevent damaging paintwork and plastic parts of the car.

3 Lift the car using a jack or place it over an inspection pit.

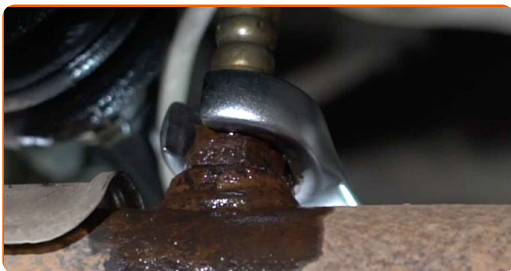
4 Clean the oxygen sensor fastener. Use a wire brush. Use WD-40 spray.



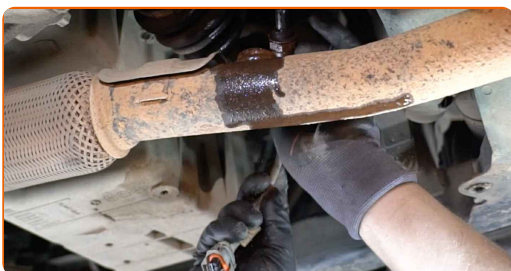
5 Detach the oxygen sensor connector.



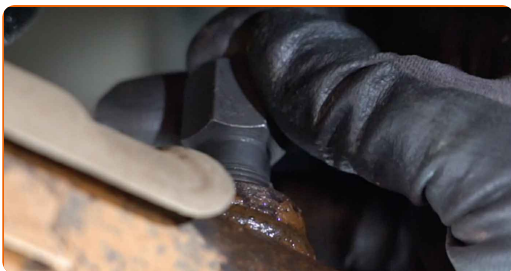
6 Unscrew the oxygen sensor fastener. Use a flare nut spanner #22.



7 Remove the oxygen sensor.

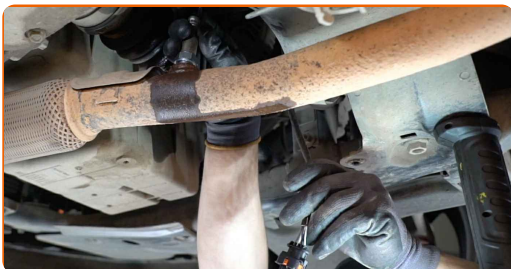


8 Cut the thread for the new oxygen sensor. Use a thread tap. Use a ratchet wrench.



9 Treat the oxygen sensor. Use high-temperature ceramic grease.

10 Install the new oxygen sensor.



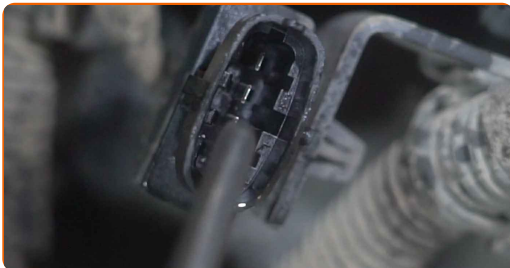
11

Tighten the oxygen sensor fastener. Use a combination spanner #22. Use a torque wrench. Tighten it to 32 Nm torque.



12

Treat the oxygen sensor connector. Use dielectric grease.



13

Attach the oxygen sensor connector.



14

Lower the car.

15

Switch on the ignition. This is necessary in order to make sure that the component operates properly.

16

Switch off the ignition.

17

Remove the fender protection cover.

18

Close the hood.

WELL DONE! 

VIEW MORE TUTORIALS

AUTODOC – TOP QUALITY AND AFFORDABLE CAR PARTS ONLINE

AUTODOC MOBILE APP: GREAT DEALS AND CONVENIENT SHOPPING



+ AUTODOC

GET IT ON
Google Play

 Download on the
App Store

Download

A GREAT SELECTION OF SPARE PARTS FOR YOUR CAR

LAMBDA SENSOR: A WIDE SELECTION

DISCLAIMER:

The document contains only general recommendations that may be useful for you when you perform repair or replacement work. AUTODOC shall not be liable for any loss, injury, damage of property occurring in the repair or replacement process due to incorrect use or misinterpretation of the provided information.

AUTODOC shall not be liable for any possible mistakes and uncertainties in this guide. The information provided is for information purposes only and cannot replace advice from specialists.

AUTODOC shall not be liable for incorrect or hazardous usage of equipment, tools and car parts. AUTODOC strongly recommends to be careful and observe the safety rules when performing repair or replacement works. Remember: usage of low quality auto parts does not guarantee you the appropriate level of road safety.

© Copyright 2022 – All the contents of this website, in particular texts, photographs and graphics, are protected by copyright. All rights, including reproduction, publication, editing and translation rights, are reserved by AUTODOC GmbH.