



How to change front
lower arm on **OPEL**
ASTRA G Box (F70) –
replacement guide

SIMILAR VIDEO TUTORIAL



This video shows the replacement procedure of a similar car part on another vehicle

Important!

This replacement procedure can be used for:

OPEL ASTRA G Box (F70) 1.6 (F70), OPEL ASTRA G Box (F70) 1.7 TD (F70), OPEL ASTRA G Box (F70) 2.0 DI (F70)

The steps may slightly vary depending on the car design.

This tutorial was created based on the replacement procedure for a similar car part on: OPEL Astra G CC (T98) 1.2 16V (F08, F48)

REPLACEMENT: FRONT LOWER ARM – OPEL ASTRA G BOX (F70). LIST OF THE TOOLS YOU'LL NEED:



- Wire brush
- WD-40 spray
- Copper grease
- Drive socket # 18
- Combination spanner #18
- Wheel impact socket #17
- Ratchet wrench
- Torque wrench
- Pin punch
- Flat chisel
- Hammer
- Rubber mallet
- Crow bar
- Hydraulic transmission jack
- Wheel chock

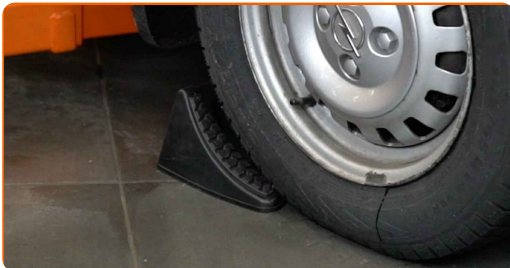
Buy tools

Replacement: front lower arm – OPEL ASTRA G Box (F70). AUTODOC experts recommend:

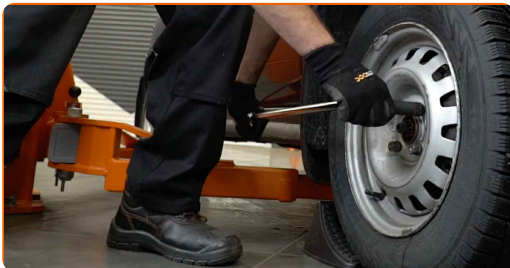
- The replacement procedure is identical for the left and right lower control arms.
- All work should be done with the engine stopped.

REPLACEMENT: FRONT LOWER ARM – OPEL ASTRA G BOX (F70). TAKE THE FOLLOWING STEPS:

1 Secure the wheels with chocks.



2 Loosen the wheel mounting bolts. Use wheel impact socket #17.



3 Raise the front of the car and secure on supports.

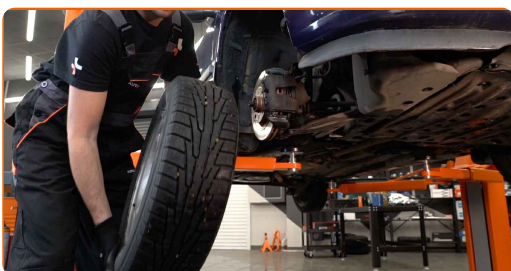
4 Unscrew the wheel bolts.



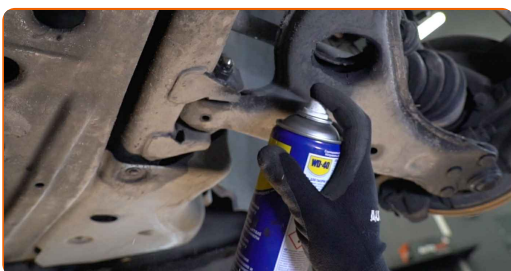
AUTODOC recommends:

- Important! Hold the wheel while unscrewing the fastening bolts. OPEL ASTRA G Box (F70)

5 Remove the wheel.



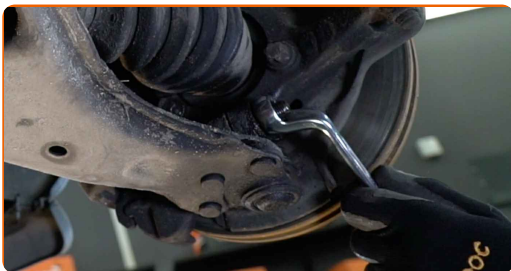
6 Clean all joints of the arm. Use a wire brush. Treat all joints of the arm. Use WD-40 spray.



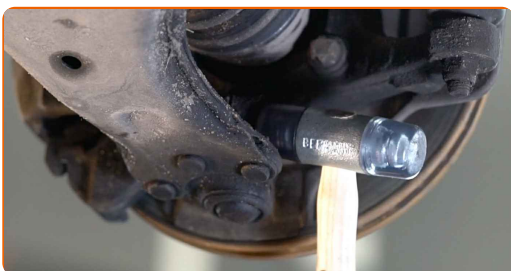
Replacement: front lower arm – OPEL ASTRA G Box (F70). Tip:

- After applying the spray, wait a few minutes.
- Wear protective goggles.

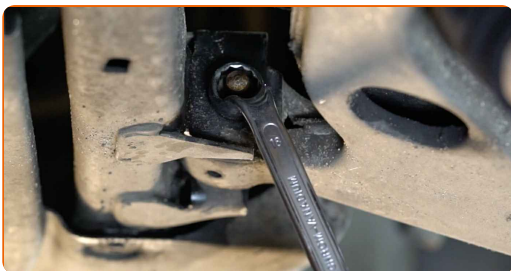
7 Unscrew the ball joint fastening to the steering knuckle. Use a drive socket #18. Use a ratchet wrench.



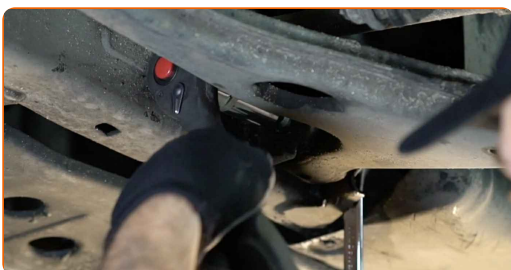
8 Remove the fastening bolt. Use a hammer. Use a pin punch.



9 Unscrew the front arm fastener. Use a drive socket #18. Use a combination spanner #18. Use a ratchet wrench.



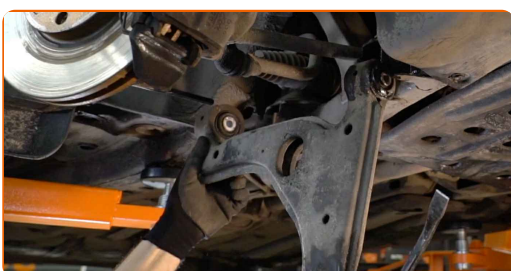
10 Unscrew the rear arm fastener. Use a drive socket #18. Use a combination spanner #18. Use a ratchet wrench.



- 11** Release the fastener connecting the ball joint to the steering knuckle. Use a flat metal-working chisel. Use a hammer. Disconnect the ball joint from the steering knuckle.



- 12** Remove the arm. Use a crowbar.



- 13** Clean the mounting seats and the thread of the suspension arm. Use a wire brush. Use WD-40 spray.

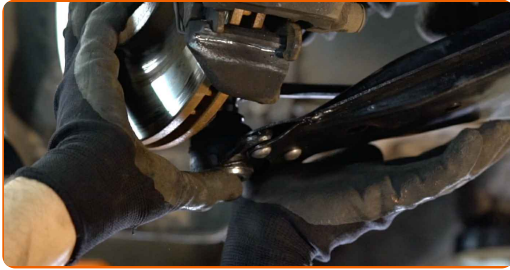


- 14** Install a new arm.



15

Connect the ball joint to the steering knuckle.

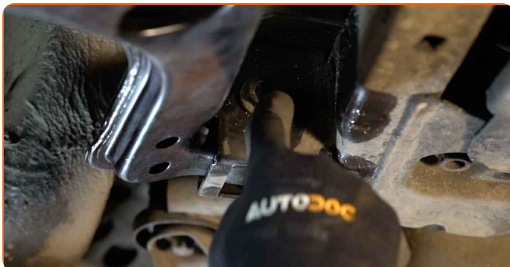


Replacement: front lower arm – OPEL ASTRA G Box (F70). AUTODOC recommends:

- During the installation process, use only new bolts and nuts.
- Do not damage the ball joint cover.

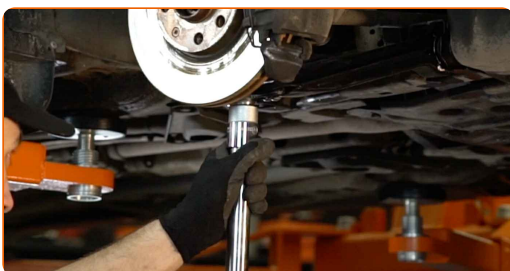
16

Install the control arm fasteners. Do not tighten it.



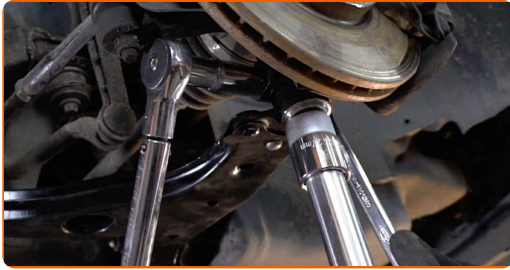
17

Support the arm. Use a hydraulic transmission jack.



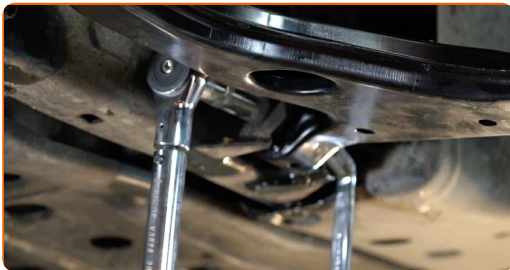
18

Tighten the ball joint fastener. Use a drive socket #18. Use a torque wrench. Tighten it to 50 nm torque.



19

Screw the front arm fastener. Use a drive socket #18. Use a combination spanner #18. Use a torque wrench. Tighten it to 90 Nm torque.+75°

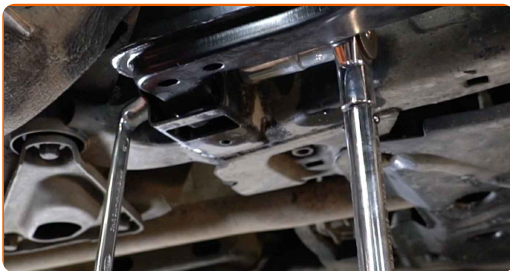


AUTODOC recommends:

- Important! Be sure to use new fasteners.

20

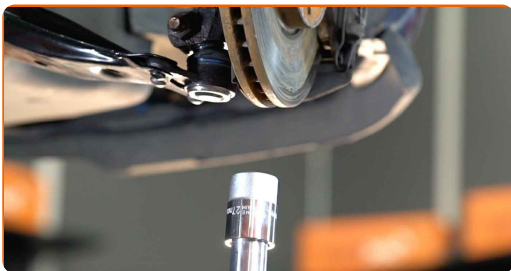
Screw the rear arm fastener. Use a drive socket #18. Use a combination spanner #18. Use a torque wrench. Tighten it to 90 Nm torque.+75°



AUTODOC recommends:

- Important! Be sure to use new fasteners.

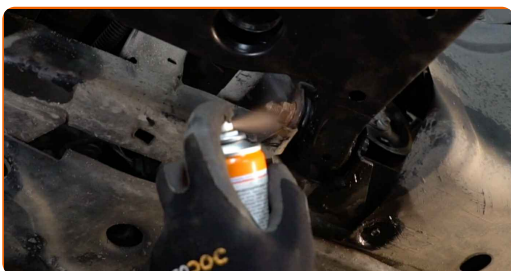
21 Remove the support from under the arm.



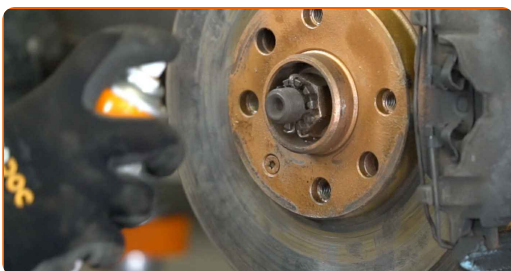
AUTODOC recommends:

- Replacement: front lower arm – OPEL ASTRA G Box (F70). Lower the transmission jack smoothly, without jerks, to avoid damaging components and mechanisms.

22 Treat all joints of the arm. Use copper grease.



23 Clean the wheel rim mounting seat. Use a wire brush. Treat the contacting surface. Use copper grease.



24 Install the wheel.



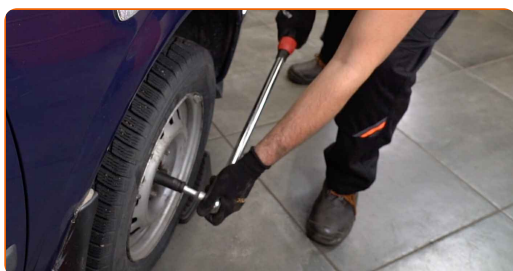
Replacement: front lower arm – OPEL ASTRA G Box (F70). AUTODOC experts recommend:

- To avoid injury, hold up the wheel when screwing in the fastening bolts.

25 Screw in the wheel bolts. Use wheel impact socket #17.



26 Lower the car and working in a cross order, tighten the wheel bolts. Use a torque wrench. Tighten it to 110 nm torque.



27

Remove the jacks and chocks.



WELL DONE! 

VIEW MORE TUTORIALS

AUTODOC – TOP QUALITY AND AFFORDABLE CAR PARTS ONLINE

AUTODOC MOBILE APP: GREAT DEALS AND CONVENIENT SHOPPING



+ AUTODOC

GET IT ON
Google Play

Download on the
App Store

Download

A GREAT SELECTION OF SPARE PARTS FOR YOUR CAR

CONTROL ARM: A WIDE SELECTION

DISCLAIMER:

The document contains only general recommendations that may be useful for you when you perform repair or replacement work. AUTODOC shall not be liable for any loss, injury, damage of property occurring in the repair or replacement process due to incorrect use or misinterpretation of the provided information.

AUTODOC shall not be liable for any possible mistakes and uncertainties in this guide. The information provided is for information purposes only and cannot replace advice from specialists.

AUTODOC shall not be liable for incorrect or hazardous usage of equipment, tools and car parts. AUTODOC strongly recommends to be careful and observe the safety rules when performing repair or replacement works. Remember: usage of low quality auto parts does not guarantee you the appropriate level of road safety.

© Copyright 2023 – All the contents of this website, in particular texts, photographs and graphics, are protected by copyright. All rights, including reproduction, publication, editing and translation rights, are reserved by AUTODOC SE.