



How to change rear
wheel bearing on **OPEL**
ASCONA B (81_, 86_, 87_,
88_) – replacement guide

SIMILAR VIDEO TUTORIAL



This video shows the replacement procedure of a similar car part on another vehicle

Important!

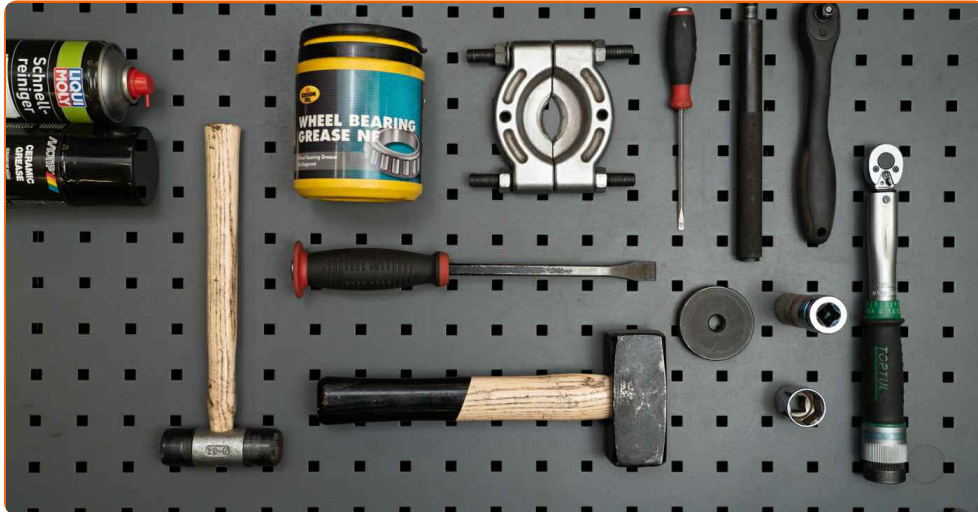
This replacement procedure can be used for:

OPEL ASCONA B (81_, 86_, 87_, 88_) 1.2, OPEL ASCONA B (81_, 86_, 87_, 88_) 1.2 S,
 OPEL ASCONA B (81_, 86_, 87_, 88_) 1.3 S, OPEL ASCONA B (81_, 86_, 87_, 88_) 1.3 N,
 OPEL ASCONA B (81_, 86_, 87_, 88_) 1.6 N, OPEL ASCONA B (81_, 86_, 87_, 88_) 1.6 S,
 OPEL ASCONA B (81_, 86_, 87_, 88_) 1.9 N, OPEL ASCONA B (81_, 86_, 87_, 88_) 1.9 S,
 OPEL ASCONA B (81_, 86_, 87_, 88_) 2.0 N, OPEL ASCONA B (81_, 86_, 87_, 88_) 2.0 S,
 OPEL ASCONA B (81_, 86_, 87_, 88_) 2.0 E, OPEL ASCONA B (81_, 86_, 87_, 88_) 2.0 D,
 OPEL ASCONA B (81_, 86_, 87_, 88_) 2.4 400

The steps may slightly vary depending on the car design.

This tutorial was created based on the replacement procedure for a similar car part on: OPEL Corsa B Hatchback (S93) 1.4 i (F08, F68, M68)

REPLACEMENT: WHEEL BEARING – OPEL ASCONA B (81_, 86_, 87_, 88_). LIST OF THE TOOLS YOU'LL NEED:



- All-purpose cleaning spray
- Bearing grease
- Ceramic grease
- Torque wrench
- Drive socket # 24
- Wheel impact socket #17
- Universal puller
- Bush and bearing driver set
- Ratchet wrench
- Flat screwdriver
- Hammer
- Rubber mallet
- Crow bar
- Wheel chock

Buy tools

AUTODOC recommends:

- Do not re-use the bearing assembly of your OPEL ASCONA B (81_, 86_, 87_, 88_) car.
- The wheel hub bearing replacement procedure is identical for both wheels on the same axle.
- Please note: all work on the car – OPEL ASCONA B (81_, 86_, 87_, 88_) – should be done with the engine switched off.

CARRY OUT REPLACEMENT IN THE FOLLOWING ORDER:

1 Secure the wheels with chocks.

2 Loosen the wheel mounting bolts. Use wheel impact socket #17.



3 Raise the car.

Replacement: wheel bearing – OPEL ASCONA B (81_, 86_, 87_, 88_).
Professionals recommend:

- If you are using a jack, make sure it rests on a flat surface without any unevenness.
- Be sure to additionally secure the car with jack stands.

4 Unscrew the wheel bolts.



AUTODOC recommends:

- Warning! To avoid injury, hold the wheel while unscrewing the fastening bolts.
OPEL ASCONA B (81_, 86_, 87_, 88_)

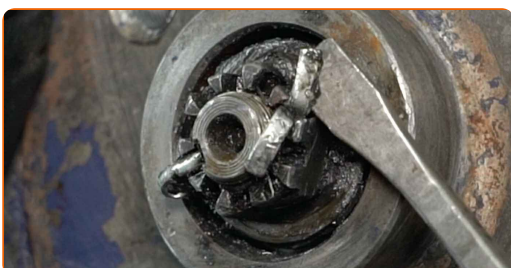
5 Remove the wheel.



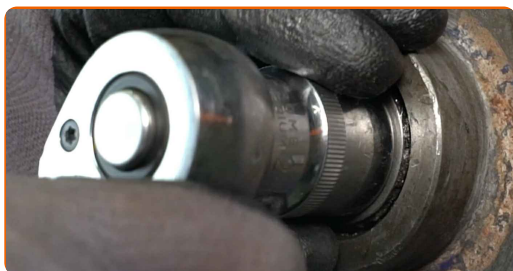
6 Remove the wheel hub nut cap. Use a crowbar. Use a hammer.



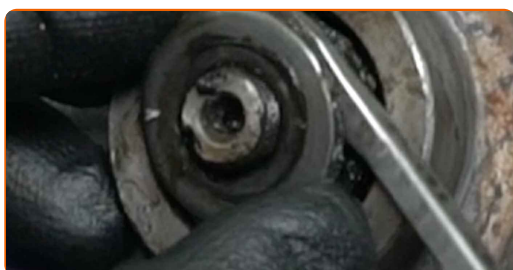
7 Remove the cotter pin securing the hub nut. Use a crowbar. Use a flat screwdriver.



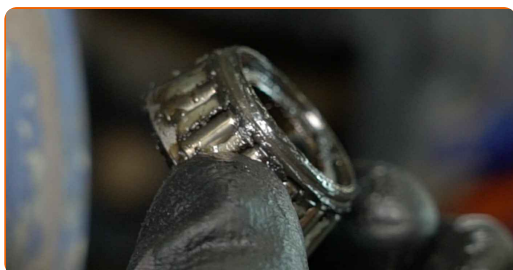
8 Unscrew the hub nut. Use a drive socket #24. Use a ratchet wrench.



9 Remove the wheel bearing washer. Use a crowbar.



10 Remove the wheel hub bearing. Use a crowbar.



11 Remove the brake drum assembled with the wheel hub bearing.



Replacement: wheel bearing – OPEL ASCONA B (81_, 86_, 87_, 88_). Tip from AUTODOC:

- Examine the brake drum. Replace it if necessary.

12 Remove the inner oil seal of the wheel bearing. Use a crowbar.



13 Remove the wheel hub bearing. Use a crowbar.



14 Clean the hub bearing mounting seat.



15 Remove the inner race of the wheel bearing from the brake drum. Use a universal puller.



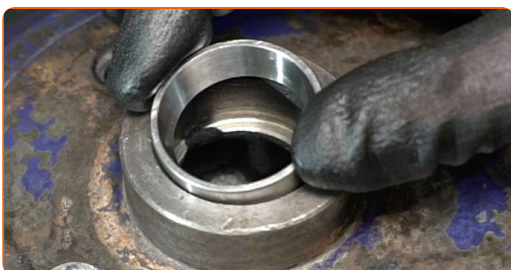
16 Remove the wheel bearing's outer race from the brake drum. Use a bush and bearing driver set.



17 Clean the hub bearing mounting seat. Use all-purpose cleaning spray.



18 Install a new wheel bearing outer race in the brake drum. Bush and bearing driver set.



19 Install the new inner race of the wheel bearing into the brake drum. Bush and bearing driver set.



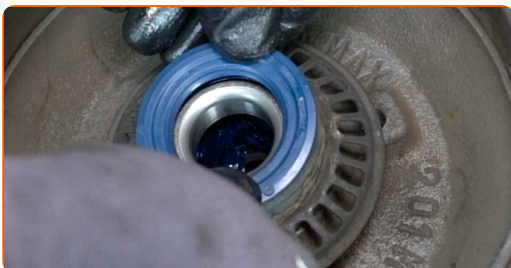
20 Treat the wheel hub bearing. Use bearing grease.



21 Install a new hub bearing and secure it.



22 Install the wheel bearing oil seal.



23 Treat the stub axle. Use all-purpose cleaning spray. Use bearing grease.



24 Install the brake drum assembled with the wheel hub bearing.



25 Fit the wheel bearing washer.



26 Screw on the hub nut. Use a drive socket #24. Use a ratchet wrench.



27 Install the wheel.



AUTODOC recommends:

- Warning! To avoid injury, hold the wheel while screwing in the fastening bolts on the car. OPEL ASCONA B (81_, 86_, 87_, 88_)

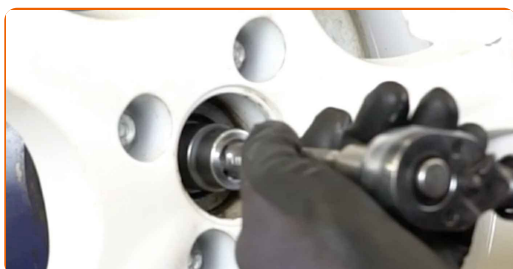
28 Screw in the wheel bolts. Use wheel impact socket #17.



29 Spin the wheel to distribute the new grease evenly on the wheel bearings.



30 Adjust the axial clearance by tightening the adjusting nut. Use a drive socket #24. Use a torque wrench. Tighten it to 20-25 Nm torque.



Please note!

- See your car's repair manual for exact adjustment instructions.

31 Unscrew the wheel bolts.



AUTODOC recommends:

- Warning! To avoid injury, hold the wheel while unscrewing the fastening bolts.
OPEL ASCONA B (81_, 86_, 87_, 88_)

32 Remove the wheel.



33 Install a new hub nut cotter pin. Use a crowbar.



34 Install the cap of the hub nut. Use a rubber mallet.



35 Treat the surface where the wheel rim contacts the brake drum. Use ceramic grease.



36 Install the wheel.



AUTODOC recommends:

- **Warning!** To avoid injury, hold the wheel while screwing in the fastening bolts on the car. OPEL ASCONA B (81_, 86_, 87_, 88_)

37

Screw in the wheel bolts. Use wheel impact socket #17.



38

Lower the car and working in a cross order, tighten the wheel bolts. Use wheel impact socket #17. Use a torque wrench. Tighten it to 110 Nm torque.



39

Remove the jacks and chocks.



Replacement: wheel bearing – OPEL ASCONA B (81_, 86_, 87_, 88_). AUTODOC recommends:

- Without starting the engine, press the brake pedal several times until you feel significant resistance.

WELL DONE! 

[VIEW MORE TUTORIALS](#)

AUTODOC – TOP QUALITY AND AFFORDABLE CAR PARTS ONLINE

AUTODOC MOBILE APP: GREAT DEALS AND CONVENIENT SHOPPING



+ AUTODOC

GET IT ON
Google Play

 Download on the
App Store

Download

A GREAT SELECTION OF SPARE PARTS FOR YOUR CAR

WHEEL BEARING: A WIDE SELECTION

DISCLAIMER:

The document contains only general recommendations that may be useful for you when you perform repair or replacement work. AUTODOC shall not be liable for any loss, injury, damage of property occurring in the repair or replacement process due to incorrect use or misinterpretation of the provided information.

AUTODOC shall not be liable for any possible mistakes and uncertainties in this guide. The information provided is for information purposes only and cannot replace advice from specialists.

AUTODOC shall not be liable for incorrect or hazardous usage of equipment, tools and car parts. AUTODOC strongly recommends to be careful and observe the safety rules when performing repair or replacement works. Remember: usage of low quality auto parts does not guarantee you the appropriate level of road safety.

© Copyright 2023 – All the contents of this website, in particular texts, photographs and graphics, are protected by copyright. All rights, including reproduction, publication, editing and translation rights, are reserved by AUTODOC SE.