



How to change wing
mirror on **NISSAN**
Qashqai / Qashqai+2 I
Van (J10, JJ10E) –
replacement guide

SIMILAR VIDEO TUTORIAL



This video shows the replacement procedure of a similar car part on another vehicle

Important!

This replacement procedure can be used for:

NISSAN Qashqai / Qashqai+2 I Van (J10, JJ10E) 2.0, NISSAN Qashqai / Qashqai+2 I Van (J10, JJ10E) 2.0 All-wheel Drive

The steps may slightly vary depending on the car design.

This tutorial was created based on the replacement procedure for a similar car part on: NISSAN Qashqai / Qashqai +2 I (J10, NJ10) 1.6

REPLACEMENT: WING MIRROR – NISSAN QASHQAI / QASHQAI+2 | VAN (J10, JJ10E). TOOLS YOU NEED:



- Electronic spray
- Torque wrench
- Drive socket # 10
- Ratchet wrench
- Plastic trim tool

Buy tools

Replacement: wing mirror – NISSAN Qashqai / Qashqai+2 I Van (J10, JJ10E).

Tip:

- All work should be done with the engine stopped.

REPLACEMENT: WING MIRROR – NISSAN QASHQAI / QASHQAI+2 I VAN (J10, JJ10E). RECOMMENDED SEQUENCE OF STEPS:

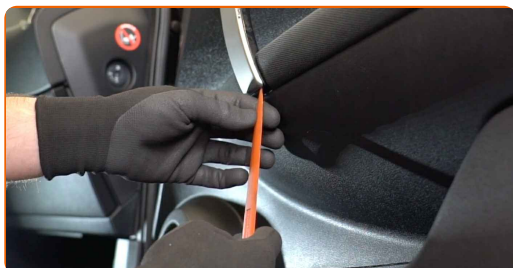
1

Open the car door.



2

Detach the door handle trim panel. Use a plastic trim tool.

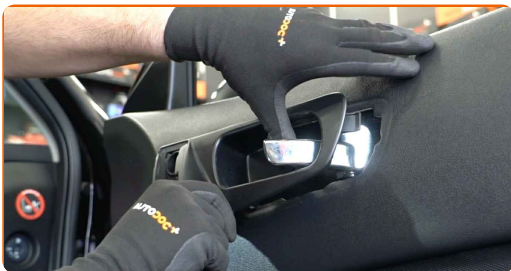


3

Unscrew the door handle fastener. Use a drive socket #10. Use a ratchet wrench.



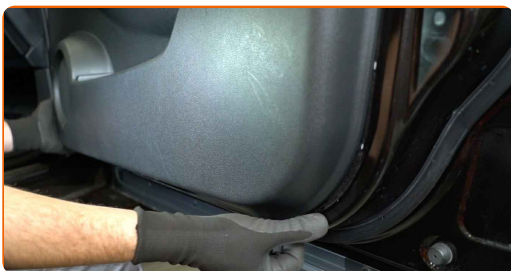
4 Remove the door handle.



AUTODOC recommends:

- Replacement: wing mirror – NISSAN Qashqai / Qashqai+2 I Van (J10, JJ10E). To avoid damaging the part during installation, do not use excessive force.

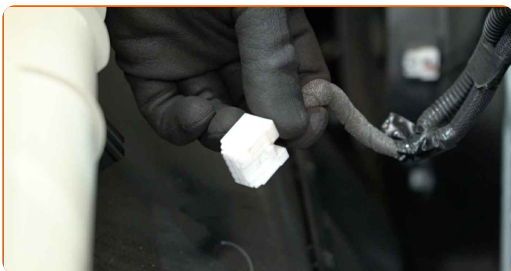
5 Detach the door card. Use a plastic trim tool.



**Replacement: wing mirror – NISSAN Qashqai / Qashqai+2 I Van (J10, JJ10E).
Tip from AUTODOC:**

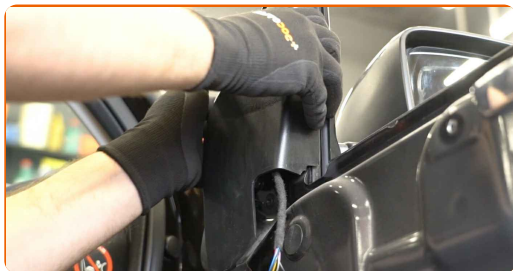
- Do not apply excessive force when removing the part. Otherwise you may damage it.

6 Detach the power window connector from the switch module.



7

Detach the side mirror trim panel.



AUTODOC recommends:

- Replacement: wing mirror – NISSAN Qashqai / Qashqai+2 I Van (J10, JJ10E). Do not use excessive force when removing the part as this may damage it.

8

Detach the mirror adjuster connector from the door. Use a plastic trim tool.

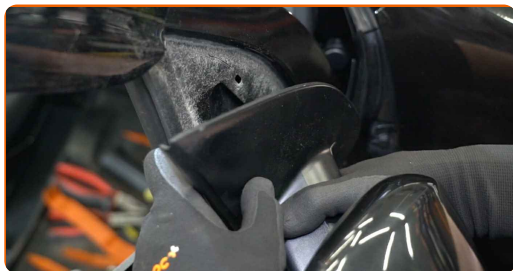


9

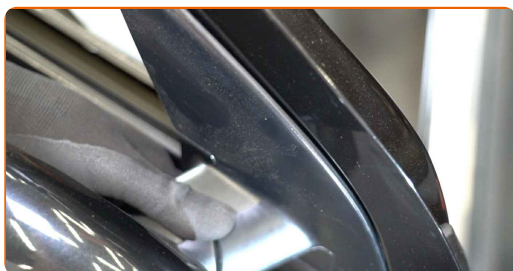
Remove the wing mirror screws. Use a drive socket #10. Use a ratchet wrench.



10 Remove the wing mirror.



11 Install the new wing mirror.



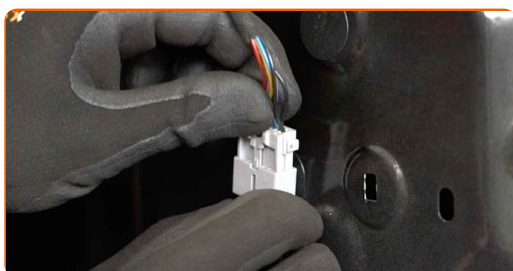
12 Screw in the side mirror fastener. Use a drive socket #10. Use a ratchet wrench.



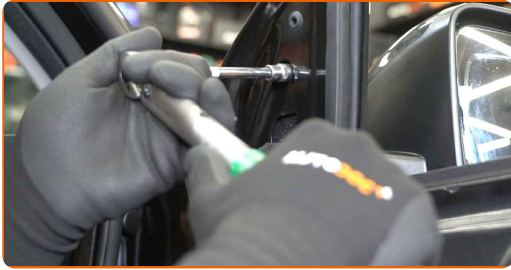
13 Treat the connector of the power mirror switch. Use dielectric grease.



14 Attach the mirror adjuster connector to the door.



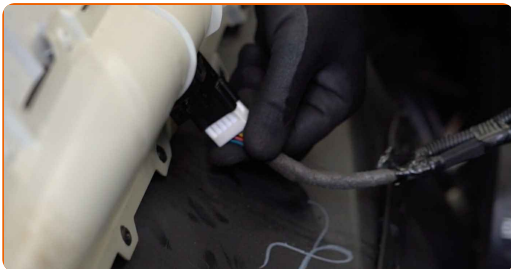
15 Tighten the screws of the wing mirror. Use a drive socket #10. Use a torque wrench. Tighten it to 12 Nm torque.



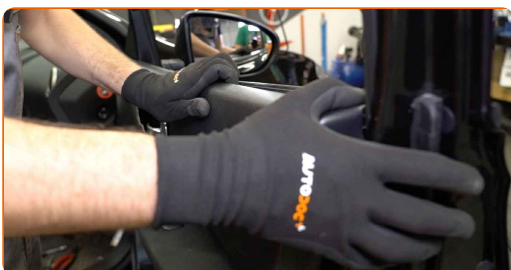
16 Attach the side mirror trim panel. Make sure you hear a click indicating that it is locked in place.



17 Attach the power window connector to the switch module.



18 Reinstall the door card. Make sure you hear a click indicating that it is locked in place.

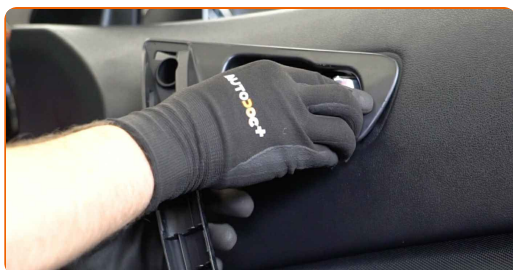


Replacement: wing mirror – NISSAN Qashqai / Qashqai+2 I Van (J10, JJ10E).
 AUTODOC experts recommend:

- When installing, do not use excessive force to avoid damage to the part.

19

Install the door handle.

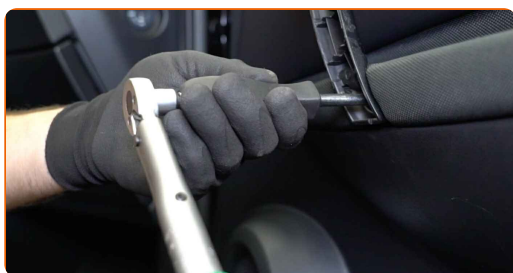


AUTODOC recommends:

- Replacement: wing mirror – NISSAN Qashqai / Qashqai+2 I Van (J10, JJ10E). Do not use excessive force during installation. This may damage the part.

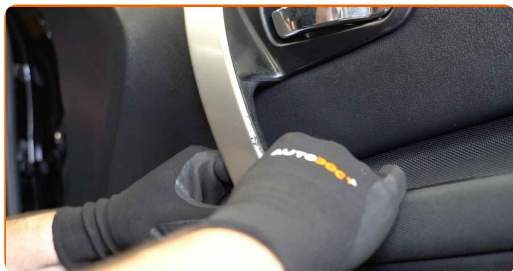
20

Tighten the door handle fastener. Use a drive socket #10. Use a torque wrench. Tighten it to 10 nm torque.



21

Attach the door handle trim panel.



22

Close the car door.

23

Switch on the ignition. This is necessary in order to make sure that the component operates properly.

24

Switch off the ignition.

WELL DONE! 

[VIEW MORE TUTORIALS](#)

AUTODOC – TOP QUALITY AND AFFORDABLE CAR PARTS ONLINE

AUTODOC MOBILE APP: GREAT DEALS AND CONVENIENT SHOPPING



+ AUTODOC

GET IT ON
Google Play

 Download on the
App Store

Download

A GREAT SELECTION OF SPARE PARTS FOR YOUR CAR

WING MIRROR: A WIDE SELECTION

DISCLAIMER:

The document contains only general recommendations that may be useful for you when you perform repair or replacement work. AUTODOC shall not be liable for any loss, injury, damage of property occurring in the repair or replacement process due to incorrect use or misinterpretation of the provided information.

AUTODOC shall not be liable for any possible mistakes and uncertainties in this guide. The information provided is for information purposes only and cannot replace advice from specialists.

AUTODOC shall not be liable for incorrect or hazardous usage of equipment, tools and car parts. AUTODOC strongly recommends to be careful and observe the safety rules when performing repair or replacement works. Remember: usage of low quality auto parts does not guarantee you the appropriate level of road safety.

© Copyright 2023 – All the contents of this website, in particular texts, photographs and graphics, are protected by copyright. All rights, including reproduction, publication, editing and translation rights, are reserved by AUTODOC SE.