



How to change rear  
suspension lower control  
arm on **NISSAN Qashqai**  
**II (J11)** – replacement  
guide

### SIMILAR VIDEO TUTORIAL



This video shows the replacement procedure of a similar car part on another vehicle

### Important!

This replacement procedure can be used for:

NISSAN Qashqai II (J11) 1.2 DIG-T, NISSAN Qashqai II (J11) 1.5 dCi, NISSAN Qashqai II (J11) 1.6 dCi, NISSAN Qashqai II (J11) 1.6 dCi ALL MODE 4x4-i, NISSAN Qashqai II (J11) 2.0 (J11E), NISSAN Qashqai II (J11) 1.6 DIG-T, NISSAN Qashqai II (J11) 2.0 ALL MODE 4x4-i (J11R), NISSAN Qashqai II (J11) 2.0, NISSAN Qashqai II (J11) 2.0 ALL MODE 4x4-i, NISSAN Qashqai II (J11) 1.3 DIG-T, NISSAN Qashqai II (J11) 1.7 dCi, NISSAN Qashqai II (J11) 1.7 dCi ALL MODE 4x4-i

The steps may slightly vary depending on the car design.

This tutorial was created based on the replacement procedure for a similar car part on: NISSAN Qashqai / Qashqai+2 I (J10, NJ10) 1.6

**REPLACEMENT: REAR SUSPENSION LOWER CONTROL ARM – NISSAN QASHQAI II (J11). TOOLS YOU MIGHT NEED:**



- Wire brush
- WD-40 spray
- Copper grease
- Torque wrench
- Combination spanner #16
- Combination spanner #18
- Combination spanner #21
- Drive socket # 18
- Drive socket # 21
- Wheel impact socket #21
- Ratchet wrench
- Hammer
- Pin punch
- Hydraulic transmission jack
- Wheel chock

**Buy tools**

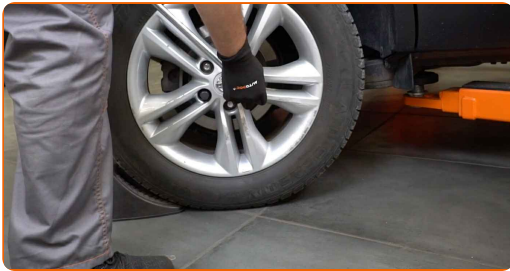
Replacement: rear suspension lower control arm – NISSAN Qashqai II (J11).  
Tip from AUTODOC experts:

- The replacement procedure is identical for the left and right lower control arms.
- Please note: all work on the car – NISSAN Qashqai II (J11) – should be done with the engine switched off.

**CARRY OUT REPLACEMENT IN THE FOLLOWING ORDER:**

**1** Secure the wheels with chocks.

**2** Loosen the wheel mounting bolts. Use wheel impact socket #21.



**3** Raise the rear of the car and secure on supports.

**4** Unscrew the wheel bolts.

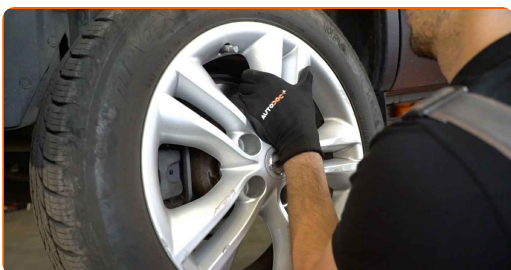


Replacement: rear suspension lower control arm – NISSAN Qashqai II (J11).  
AUTODOC recommends:

- To avoid injury, hold up the wheel when unscrewing the bolts.

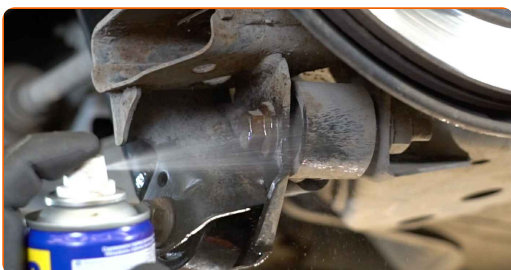
5

Remove the wheel.



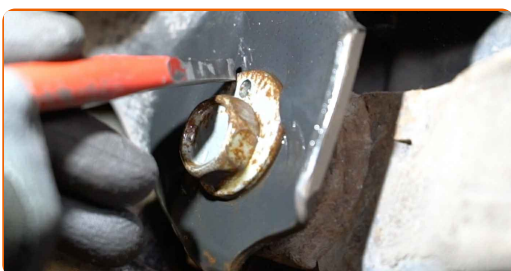
6

Clean the control arm fasteners. Use a wire brush. Use WD-40 spray.



7

Make a mark on the camber adjustment bolt.



- 8** Unscrew the fastener connecting the control arm to the rear subframe. Use a combination spanner #21. Use a drive socket #21. Use a ratchet wrench.



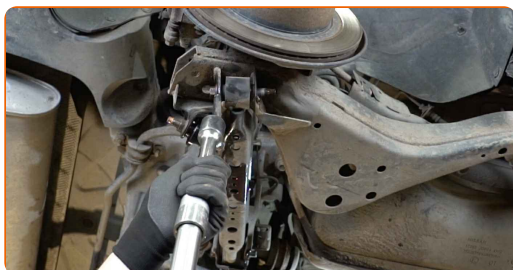
- 9** Unscrew the fastener connecting the control arm to the rear knuckle. Use a combination spanner #18. Use a drive socket #21. Use a ratchet wrench.



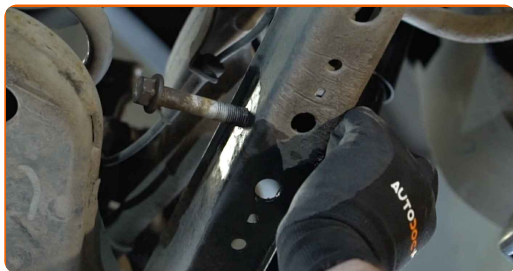
- 10** Unscrew the fastener connecting the stabilizer bar with the control arm. Use a combination spanner #16. Use a drive socket #18. Use a ratchet wrench.



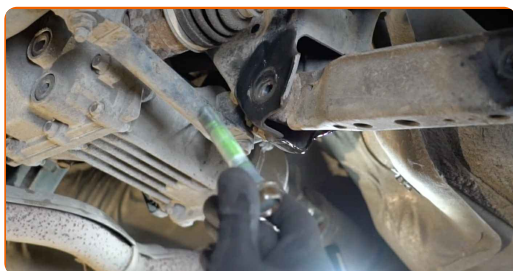
- 11** Support the arm. Use a hydraulic transmission jack.



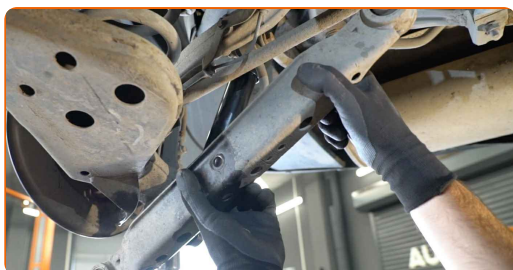
**12** Remove the fastening bolt. Use a pin punch. Use a hammer.



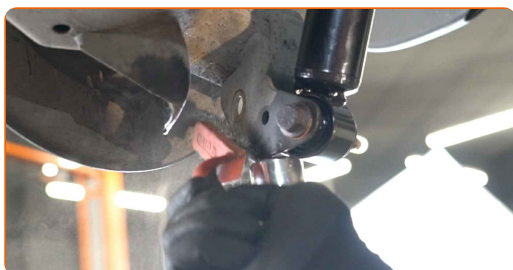
**13** Remove the fastening bolt.



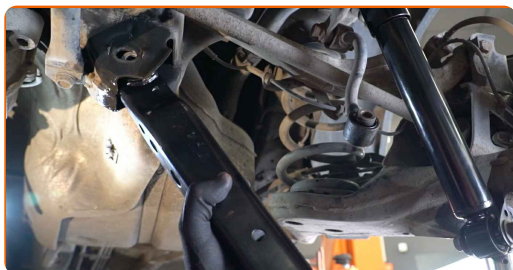
**14** Remove the arm.



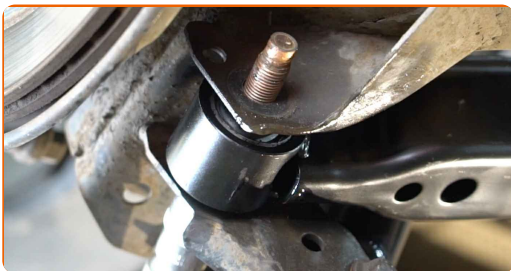
**15** Clean the mounting seats and the thread of the suspension arm. Use a wire brush. Use WD-40 spray.



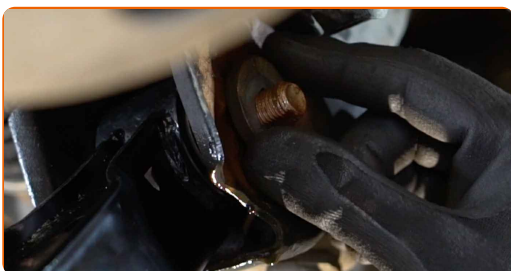
**16** Install a new arm.



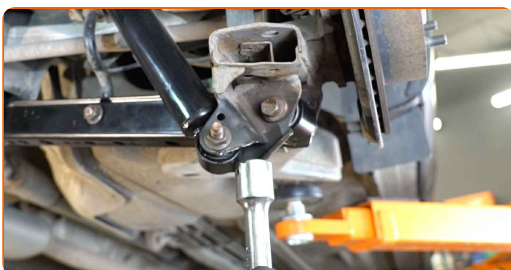
**17** Install the fastening bolts.



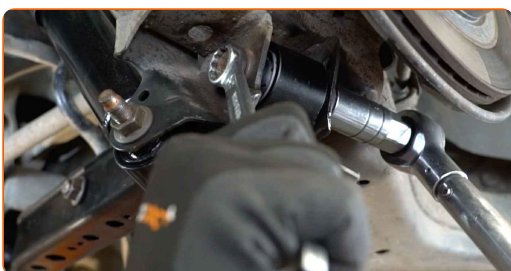
**18** Adjust the position of the alignment bolt according to the mark.



**19** Raise the hydraulic transmission jack by 10-15 cm.



**20** Tighten the fastener connecting the suspension arm to the rear knuckle. Use a combination spanner #18. Use a drive socket #21. Use a torque wrench. Tighten it to 150 Nm torque.





- 21** Tighten the fastener connecting the control arm to the rear subframe. Use a combination spanner #21. Use a drive socket #21. Use a torque wrench. Tighten it to 118 Nm torque.



- 22** Tighten the fastener connecting the stabilizer bar with the control arm. Use a combination spanner #16. Use a drive socket #18. Use a torque wrench. Tighten it to 88 Nm torque.



- 23** Remove the support from under the arm.

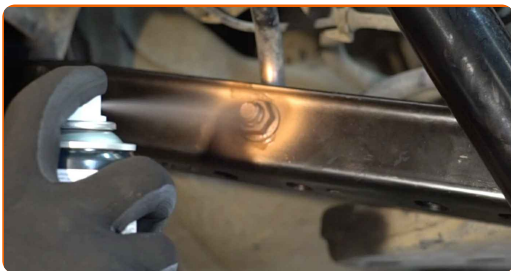


Replacement: rear suspension lower control arm – NISSAN Qashqai II (J11).

Tip:

- Lower the hydraulic transmission jack smoothly, without jerks, to avoid damaging assemblies and mechanisms.

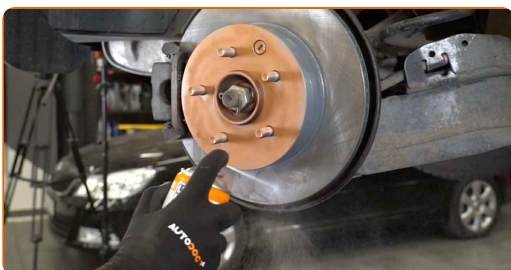
**24** Treat all joints of the arm. Use copper grease.



**25** Treat the surface where the brake disc contacts the wheel rim. Use copper grease.



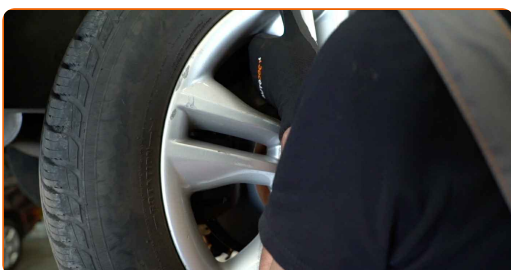
**26** Clean the brake disk surface. Use a brake cleaner.



**AUTODOC recommends:**

- Replacement: rear suspension lower control arm – NISSAN Qashqai II (J11).  
After applying the spray, wait a few minutes.

**27** Install the wheel.



Replacement: rear suspension lower control arm – NISSAN Qashqai II (J11).  
Tip from AUTODOC:

- To avoid injury, hold up the wheel when screwing in the fastening bolts.

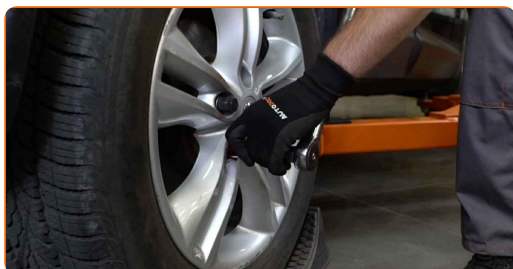
28

Screw in the wheel bolts. Use wheel impact socket #21.



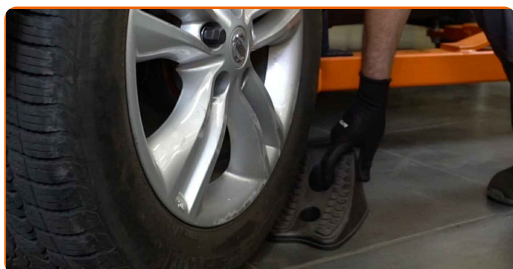
29

Lower the car and working in a cross order, tighten the wheel bolts. Use wheel impact socket #21. Use a torque wrench. Tighten it to 112 Nm torque.



30

Remove the jacks and chocks.



**WELL DONE!** 

[VIEW MORE TUTORIALS](#)

# AUTODOC – TOP QUALITY AND AFFORDABLE CAR PARTS ONLINE

**AUTODOC MOBILE APP: GREAT DEALS AND CONVENIENT SHOPPING**



**+ AUTODOC**

GET IT ON  
 **Google Play**

 **Download on the App Store**

**Download**

**A GREAT SELECTION OF SPARE PARTS FOR YOUR CAR**

**CONTROL ARM: A WIDE SELECTION**

## **DISCLAIMER:**

The document contains only general recommendations that may be useful for you when you perform repair or replacement work. AUTODOC shall not be liable for any loss, injury, damage of property occurring in the repair or replacement process due to incorrect use or misinterpretation of the provided information.

AUTODOC shall not be liable for any possible mistakes and uncertainties in this guide. The information provided is for information purposes only and cannot replace advice from specialists.

AUTODOC shall not be liable for incorrect or hazardous usage of equipment, tools and car parts. AUTODOC strongly recommends to be careful and observe the safety rules when performing repair or replacement works. Remember: usage of low quality auto parts does not guarantee you the appropriate level of road safety.

© Copyright 2022 – All the contents of this website, in particular texts, photographs and graphics, are protected by copyright. All rights, including reproduction, publication, editing and translation rights, are reserved by AUTODOC GmbH.