



How to change rear  
suspension lower trailing  
arm on **NISSAN Primera**  
**Saloon (P12)** –  
replacement guide

## SIMILAR VIDEO TUTORIAL



This video shows the replacement procedure of a similar car part on another vehicle

### Important!

This replacement procedure can be used for:  
NISSAN Primera Saloon (P12) 2.0

The steps may slightly vary depending on the car design.

This tutorial was created based on the replacement procedure for a similar car part on: NISSAN X-Trail (T30) 2.5 4x4

**REPLACEMENT: FRONT LOWER ARM – NISSAN PRIMERA SALOON (P12). TOOLS YOU NEED:**



- Wire brush
- WD-40 spray
- Brake cleaner
- Ceramic grease
- Copper grease
- Torque wrench
- Combination spanner #17
- Combination spanner #22
- Drive socket # 17
- Drive socket # 22
- Wheel impact socket #21
- Ratchet wrench
- Crow bar
- Hydraulic transmission jack
- Wheel chock

**Buy tools**

Replacement: front lower arm – NISSAN Primera Saloon (P12). AUTODOC experts recommend:

- The replacement procedure is identical for the left and right lower control arms.
- Please note: all work on the car – NISSAN Primera Saloon (P12) – should be done with the engine switched off.

## CARRY OUT REPLACEMENT IN THE FOLLOWING ORDER:

**1** Secure the wheels with chocks.

**2** Loosen the wheel mounting bolts. Use wheel impact socket #21.

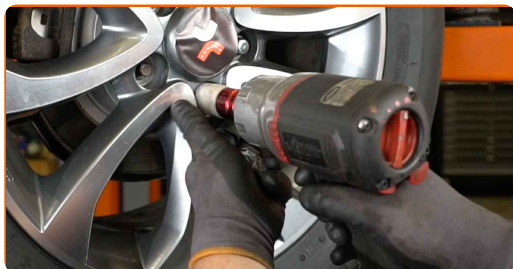


**3** Raise the car.

Replacement: front lower arm – NISSAN Primera Saloon (P12). Tip from AUTODOC:

- If you are using a jack, make sure it rests on a flat surface without any unevenness.
- Be sure to additionally secure the car with jack stands.

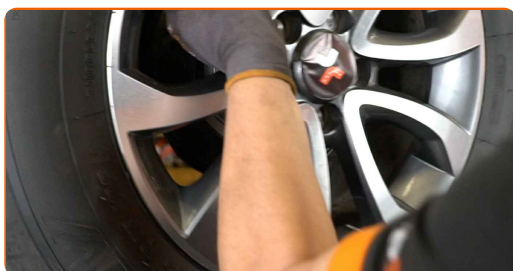
**4** Unscrew the wheel bolts.



**AUTODOC recommends:**

- Warning! To avoid injury, hold the wheel while unscrewing the fastening bolts.  
NISSAN Primera Saloon (P12)

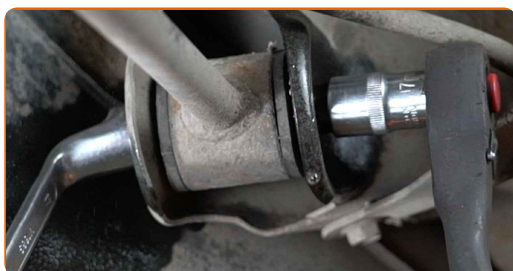
**5** Remove the wheel.



**6** Clean all joints of the arm. Use a wire brush. Use WD-40 spray.



- 7 Unscrew the fastener connecting the suspension arm to the car body. Use a combination spanner #17. Use a drive socket #17. Use a ratchet wrench.



- 8 Unscrew the fastener connecting the control arm to the rear knuckle. Use a combination spanner #22. Use a drive socket #22. Use a ratchet wrench.



- 9 Remove the fastening bolts.

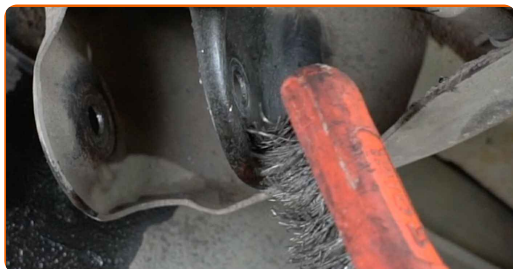


- 10 Remove the control arm.



11

Clean the suspension arm mounting seats. Use a wire brush. Use WD-40 spray.



12

Install a new arm. Use a crowbar.



Replacement: front lower arm – NISSAN Primera Saloon (P12). AUTODOC experts recommend:

- During the installation process, use only new bolts and nuts.

13

Install the fastening bolts.



14

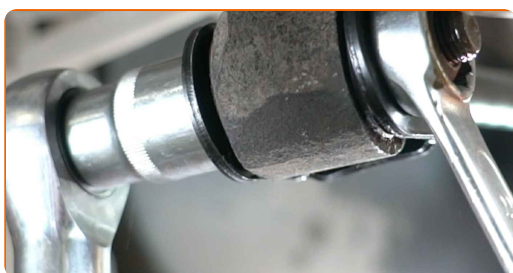
Support the rear knuckle. Use a hydraulic transmission jack.



Replacement: front lower arm – NISSAN Primera Saloon (P12). AUTODOC recommends:

- For tightening the fasteners correctly, you have to jack up the suspension components to their working position.

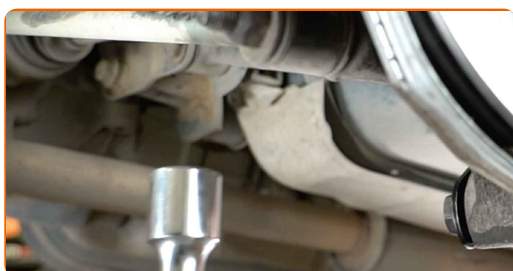
**15** Tighten the fastener connecting the suspension arm to the rear knuckle. Use a combination spanner #22. Use a drive socket #22. Use a torque wrench. Tighten it to 110 Nm torque.



**16** Tighten the fastener connecting the suspension arm to the car body. Use a combination spanner #17. Use a drive socket #17. Use a torque wrench. Tighten it to 98 Nm torque.



**17** Remove the support from under the rear knuckle.





**AUTODOC recommends:**

- Replacement: front lower arm – NISSAN Primera Saloon (P12). Lower the transmission jack smoothly, without jerks, to avoid damaging components and mechanisms.

**18**

Treat all joints of the arm. Use copper grease.



**19**

Clean the wheel rim mounting seat. Use a wire brush.



**20**

Treat the surface where the brake disc contacts the wheel rim. Use ceramic grease.



**21**

Clean the brake disk surface. Use a brake cleaner.



**AUTODOC recommends:**

- Replacement: front lower arm – NISSAN Primera Saloon (P12). After applying the spray, wait a few minutes.

**22**

Install the wheel.

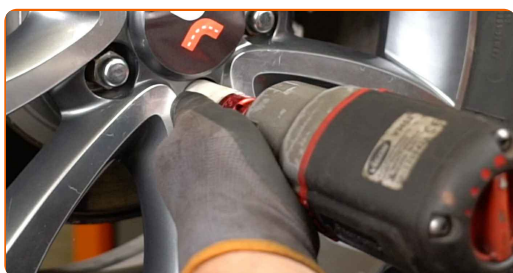


**AUTODOC recommends:**

- Important! Hold the wheel while screwing in the fastening bolts. NISSAN Primera Saloon (P12)

**23**

Screw in the wheel bolts. Use wheel impact socket #21.



**24**

Lower the car and working in a cross order, tighten the wheel bolts. Use wheel impact socket #21. Use a torque wrench. Tighten it to 118 Nm torque.



25

Remove the jacks and chocks.



**WELL DONE!** 

**VIEW MORE TUTORIALS**

# AUTODOC – TOP QUALITY AND AFFORDABLE CAR PARTS ONLINE

**AUTODOC MOBILE APP: GREAT DEALS AND CONVENIENT SHOPPING**



**+ AUTODOC**

GET IT ON  
**Google Play**

 Download on the  
**App Store**

**Download**

**A GREAT SELECTION OF SPARE PARTS FOR YOUR CAR**

**CONTROL ARM: A WIDE SELECTION**

## **DISCLAIMER:**

The document contains only general recommendations that may be useful for you when you perform repair or replacement work. AUTODOC shall not be liable for any loss, injury, damage of property occurring in the repair or replacement process due to incorrect use or misinterpretation of the provided information.

AUTODOC shall not be liable for any possible mistakes and uncertainties in this guide. The information provided is for information purposes only and cannot replace advice from specialists.

AUTODOC shall not be liable for incorrect or hazardous usage of equipment, tools and car parts. AUTODOC strongly recommends to be careful and observe the safety rules when performing repair or replacement works. Remember: usage of low quality auto parts does not guarantee you the appropriate level of road safety.

© Copyright 2022 – All the contents of this website, in particular texts, photographs and graphics, are protected by copyright. All rights, including reproduction, publication, editing and translation rights, are reserved by AUTODOC GmbH.