



How to change engine oil
and filter on **NISSAN**
PRIMERA Hatchback
(P10) – replacement
guide

SIMILAR VIDEO TUTORIAL



This video shows the replacement procedure of a similar car part on another vehicle

Important!

This replacement procedure can be used for:

NISSAN PRIMERA Hatchback (P10) 2.0 16V, NISSAN PRIMERA Hatchback (P10) 2.0 i,
NISSAN PRIMERA Hatchback (P10) 2.0

The steps may slightly vary depending on the car design.

This tutorial was created based on the replacement procedure for a similar car part on: NISSAN MICRA III (K12) 1.4 16V

REPLACEMENT: ENGINE OIL AND FILTER – NISSAN PRIMERA HATCHBACK (P10). TOOLS YOU'LL NEED:



- Wire brush
- All-purpose cleaning spray
- Torque wrench
- Drive socket # 14
- Oil filter cup socket 65-14F
- Ratchet wrench
- Funnel
- Oil drain pan
- Fender cover

Buy tools

Replacement: engine oil and filter – NISSAN PRIMERA Hatchback (P10). Tip:

- Replace the oil filter every time when changing motor oil.
- Wear gloves to prevent contact with hot liquid.
- All work should be done with the engine stopped.

REPLACEMENT: ENGINE OIL AND FILTER – NISSAN PRIMERA HATCHBACK (P10). RECOMMENDED SEQUENCE OF STEPS:

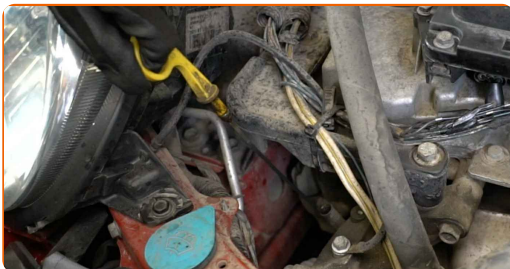
1 Open the bonnet.

2 Use a fender protection cover to prevent damaging paintwork and plastic parts of the car.

3 Unscrew the oil filler plug.



4 Pull up the oil dipstick.



5 Lift the car using a jack or place it over an inspection pit.

Replacement: engine oil and filter – NISSAN PRIMERA Hatchback (P10).
AUTODOC recommends:

- The vehicle must be on a level surface, but if it is at an angle, the drain plug must be at the lowest point.

6 Put a waste oil container with at least 4 l capacity under the drainage hole.



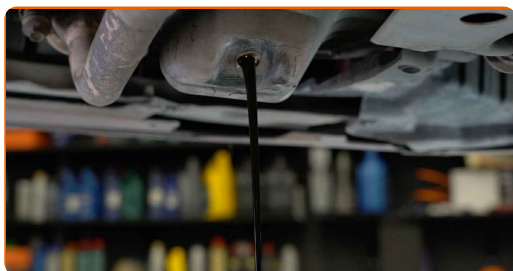
7 Clean the area of the oil pan drainage hole. Use a wire brush. Use all-purpose cleaning spray.



8 Unscrew the drain plug. Use a drive socket #14. Use a ratchet wrench.



9 Drain the used oil.

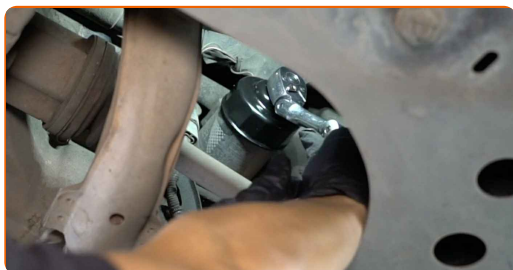


AUTODOC recommends:

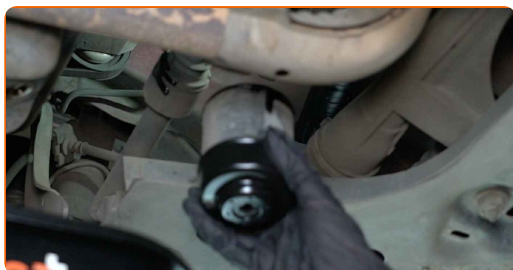
- Caution! The oil may be hot.
- Wait until the oil has completely drained from the drainage hole.

10 Clean the oil filter. Use all-purpose cleaning spray.

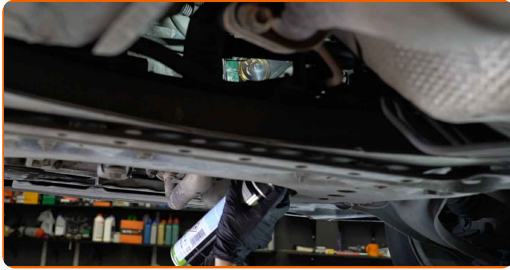
11 Unscrew the oil filter. Use the 65-14F socket. Use a ratchet wrench.



12 Remove the oil filter.



13 Clean the oil filter seat. Use all-purpose cleaning spray.



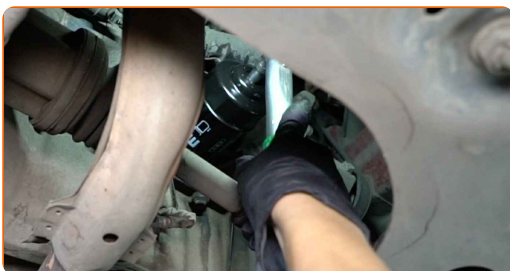
14 Lubricate the rubber seal of the new filter with a little amount of fresh oil.



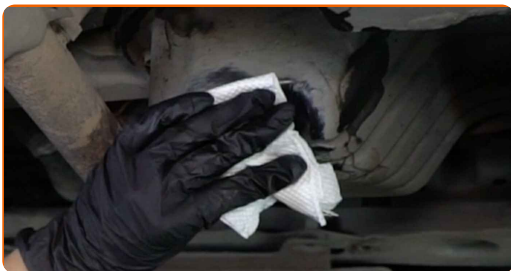
15 Install a new oil filter.



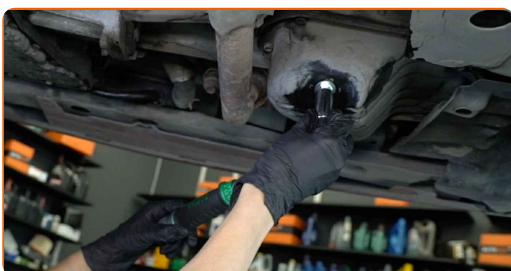
16 Tighten the oil filter. Remember to observe the recommended tightening torque. Use the 65-14F socket. Use a torque wrench. Tighten it to 18 Nm torque.



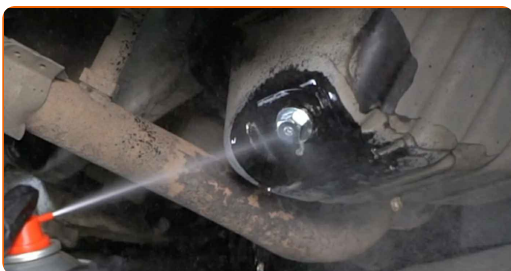
17 Clean the area of the oil pan drainage hole. Use all-purpose cleaning spray.



18 Screw in the new drainage plug and tighten it. Use a drive socket #14. Use a torque wrench. Tighten it to 28 Nm torque.

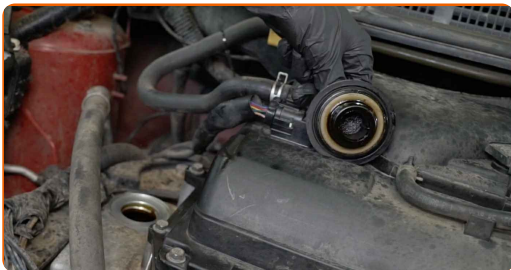


19 Clean the area of the oil pan drainage hole. Use all-purpose cleaning spray.

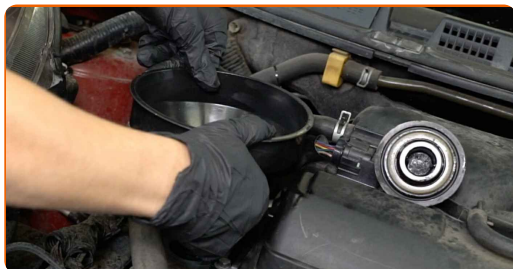


20 Lower the car.

21 Remove the oil filler cap.



22 Insert the funnel.



23 Pour new oil into the engine in the amount recommended by the car manufacturer.



Replacement: engine oil and filter – NISSAN PRIMERA Hatchback (P10).
AUTODOC experts recommend:

- Use the oil recommended by the manufacturer.

24 Check the oil level using the dipstick.



AUTODOC recommends:

- Top up oil if necessary.
- The oil level should be between the Min and Max marks.

25 Install the oil filler cap.



26 Tighten the oil filler cap.

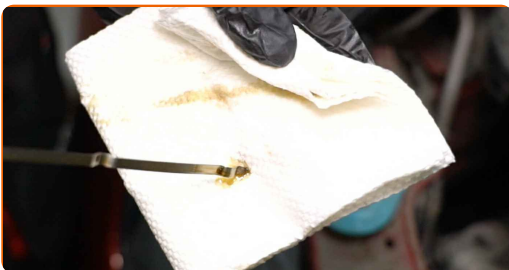


27 Run the engine for a few minutes. After the oil pressure warning light goes out, stop the engine.

**Replacement: engine oil and filter – NISSAN PRIMERA Hatchback (P10).
Professionals recommend:**

- Note that oil pressure warning light, which indicates insufficient pressure in the lubrication system, may be on for a longer time than usual. After a few seconds, the oil will fill all the channels, and the light will go out.

28 Check the oil level with a dipstick 5 minutes after turning the engine off and add oil if necessary.



Please note!

- The oil level should be between the Min and Max marks.

29 Make sure that the oil filler cap is properly tightened.

30 Check the threaded plug of the drainage hole and the oil filter seal for tightness. If necessary, carefully tighten them up.

31 Remove the fender protection cover.

32 Close the bonnet.

Replacement: engine oil and filter – NISSAN PRIMERA Hatchback (P10). Tip from AUTODOC experts:

- To protect the environment from pollution, be sure to dispose of the used filters at special collection points.

WELL DONE! 

[VIEW MORE TUTORIALS](#)

AUTODOC – TOP QUALITY AND AFFORDABLE CAR PARTS ONLINE

AUTODOC MOBILE APP: GREAT DEALS AND CONVENIENT SHOPPING



+ AUTODOC

GET IT ON
Google Play

 Download on the
App Store

Download

A GREAT SELECTION OF SPARE PARTS FOR YOUR CAR

OIL FILTER: A WIDE SELECTION

DISCLAIMER:

The document contains only general recommendations that may be useful for you when you perform repair or replacement work. AUTODOC shall not be liable for any loss, injury, damage of property occurring in the repair or replacement process due to incorrect use or misinterpretation of the provided information.

AUTODOC shall not be liable for any possible mistakes and uncertainties in this guide. The information provided is for information purposes only and cannot replace advice from specialists.

AUTODOC shall not be liable for incorrect or hazardous usage of equipment, tools and car parts. AUTODOC strongly recommends to be careful and observe the safety rules when performing repair or replacement works. Remember: usage of low quality auto parts does not guarantee you the appropriate level of road safety.

© Copyright 2023 – All the contents of this website, in particular texts, photographs and graphics, are protected by copyright. All rights, including reproduction, publication, editing and translation rights, are reserved by AUTODOC SE.