



How to change front
door handle on **NISSAN**
Pathfinder III (R51) –
replacement guide

SIMILAR VIDEO TUTORIAL



This video shows the replacement procedure of a similar car part on another vehicle

Important!

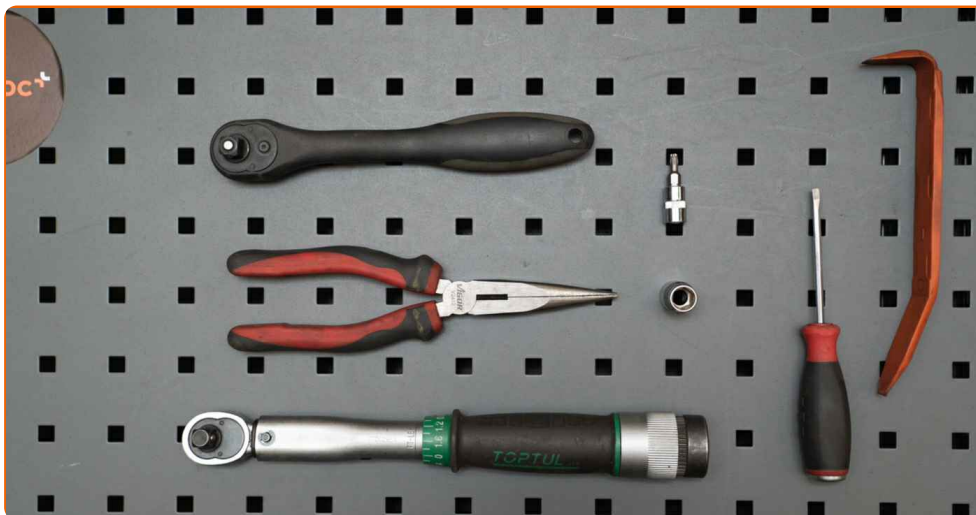
This replacement procedure can be used for:

NISSAN Pathfinder III (R51) 2.5 dCi 4WD, NISSAN Pathfinder III (R51) 4.0 4WD,
NISSAN Pathfinder III (R51) 3.0 dCi

The steps may slightly vary depending on the car design.

This tutorial was created based on the replacement procedure for a similar car part on: NISSAN Qashqai / Qashqai+2 I (J10, NJ10) 1.6

REPLACEMENT: DOOR HANDLE – NISSAN PATHFINDER III (R51). TOOLS YOU'LL NEED:



- Torque wrench
- Torx bit T20
- Drive socket # 10
- Ratchet wrench
- Flat Screwdriver
- Round-nose pliers
- Plastic trim tool

Buy tools

Replacement: door handle – NISSAN Pathfinder III (R51). AUTODOC experts recommend:

- The replacement procedure is identical for the left and right door handles.
- All work should be done with the engine stopped.

CARRY OUT REPLACEMENT IN THE FOLLOWING ORDER:

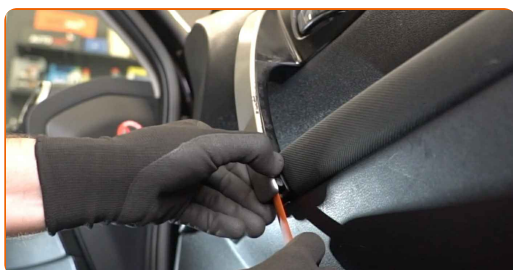
1

Open the car door.



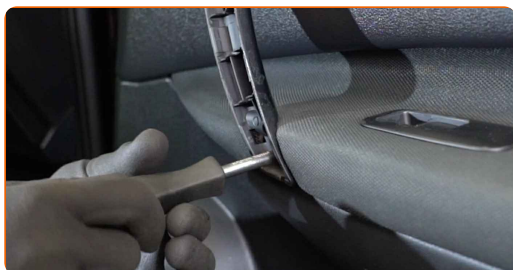
2

Detach the door handle trim panel. Use a plastic trim tool.



3

Unscrew the door handle fastener. Use a drive socket #10. Use a ratchet wrench.



4 Remove the door handle.



AUTODOC recommends:

- Replacement: door handle – NISSAN Pathfinder III (R51). Do not use excessive force when removing the part as this may damage it.

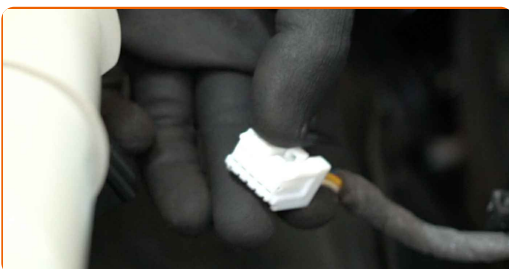
5 Detach the door card. Use a plastic trim tool.



Replacement: door handle – NISSAN Pathfinder III (R51). Tip:

- Do not apply excessive force when removing the part. Otherwise you may damage it.

6 Detach the power window connector from the switch module.



7

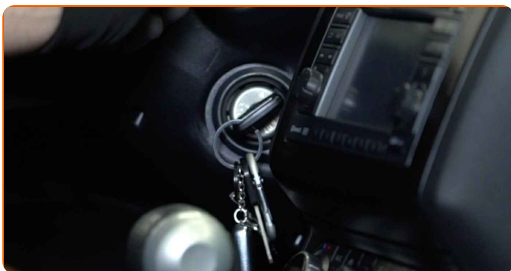
Remove the power window switch module.

**8**

Attach the power window connector to the switch module.

**9**

Switch on the ignition.

**10**

Remove the covers from the window raiser fasteners.

11

Lower the window glass.

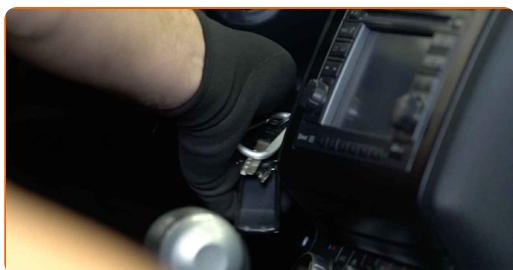


Replacement: door handle – NISSAN Pathfinder III (R51). AUTODOC recommends:

- Continue lowering the window glass until its fasteners become visible.

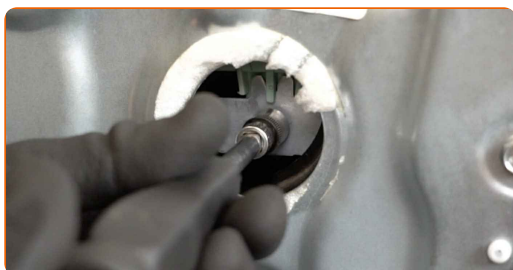
12

Switch off the ignition.



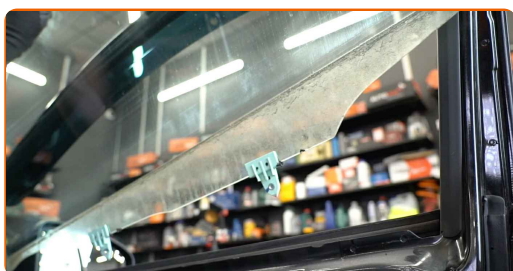
13

Unscrew the window glass fasteners. Use a drive socket #10. Use a ratchet wrench.



14

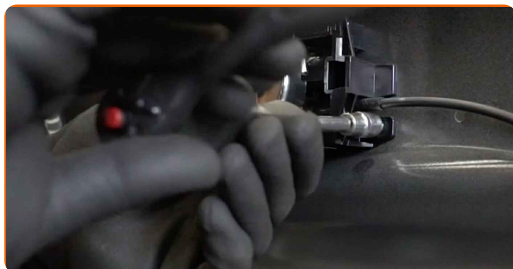
Raise the glass a little and remove it.



Replacement: door handle – NISSAN Pathfinder III (R51). Tip from AUTODOC:

- To avoid injury, hold the glass when raising it.

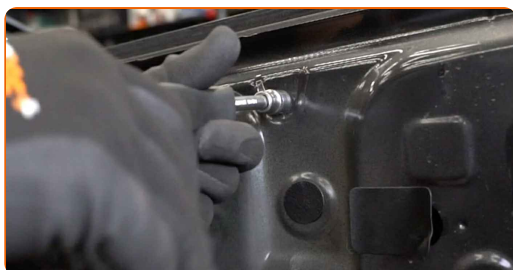
15 Unscrew the fastener of the interior door handle. Use a drive socket #10. Use a ratchet wrench.



16 Remove the interior door handle.



17 Unscrew the door panel fasteners. Use a drive socket #10. Use a ratchet wrench.



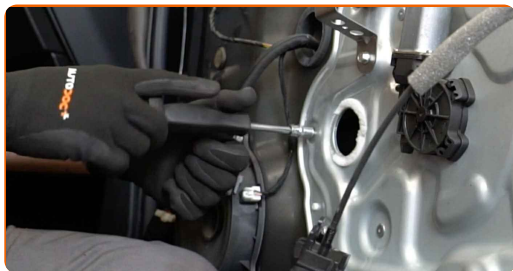
18 Detach the power window wiring harness.



19 Detach the power window connector. Use round-nose pliers.



20 Unscrew the door panel fasteners. Use a drive socket #10. Use a ratchet wrench.



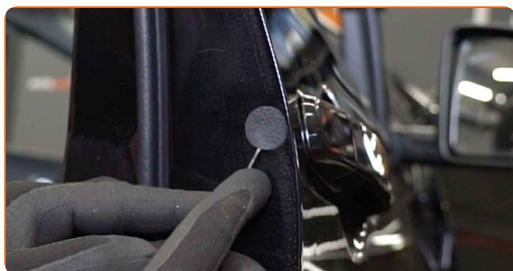
21 Remove the door panel together with the window regulator linkage.



Replacement: door handle – NISSAN Pathfinder III (R51). Professionals recommend:

- Do not apply excessive force when removing the part. Otherwise you may damage it.

22 Remove the cover from the exterior door handle fastener. Use a flat screwdriver.



23

Unscrew the fastener of the exterior door handle. Use Torx T20. Use a ratchet wrench.



24

Remove the exterior door handle.

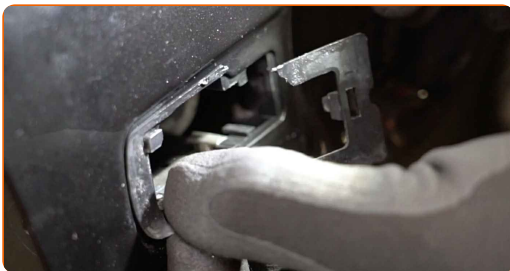


Replacement: door handle – NISSAN Pathfinder III (R51). Tip from AUTODOC experts:

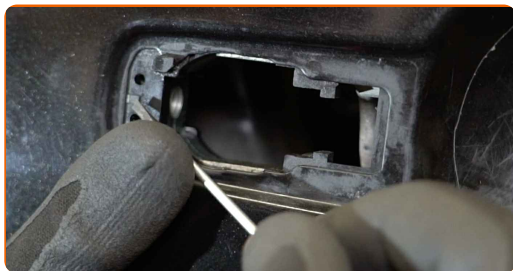
- Do not apply excessive force when removing the part. Otherwise you may damage it.

25

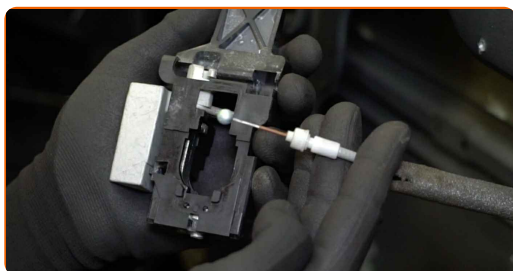
Remove the exterior door handle gaskets.



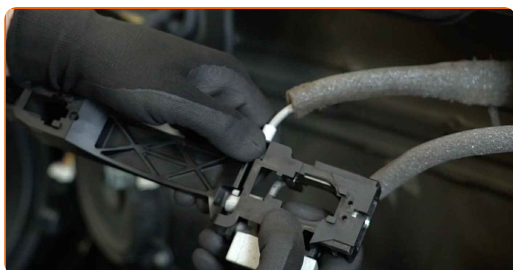
- 26 Release the exterior door handle actuator. Use a flat screwdriver.



- 27 Detach the exterior door handle actuator cable.



- 28 Attach the exterior door handle actuator cable.



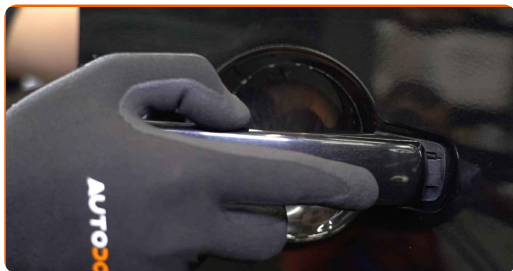
- 29 Install the exterior door handle actuator.



- 30 Install the exterior door handle gaskets.



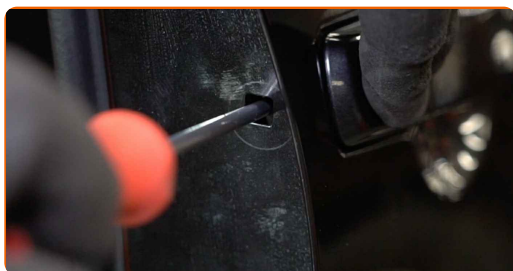
31 Install the new exterior door handle.



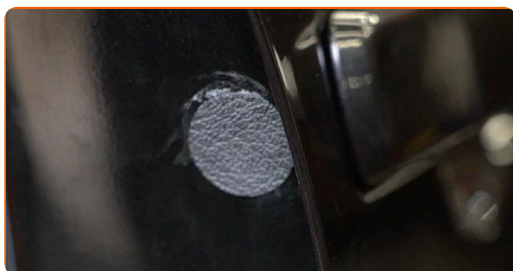
Replacement: door handle – NISSAN Pathfinder III (R51). Tip:

- When installing, do not use excessive force to avoid damage to the part.
- Check if the handle works correctly.

32 Screw in the exterior door handle fastener. Use Torx T20. Use a ratchet wrench.



33 Install the cover on the exterior door handle fastener.



34 Install the door panel together with the window regulator linkage.



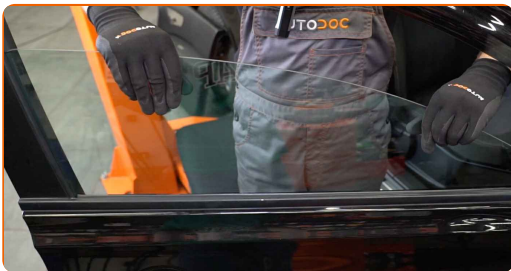
AUTODOC recommends:

- Replacement: door handle – NISSAN Pathfinder III (R51). Do not use excessive force during installation. This may damage the part.

35 Screw in the door panel fasteners. Use a drive socket #10. Use a ratchet wrench.



36 Lower the window glass and install it to its mounting seat in the window raiser mechanism.

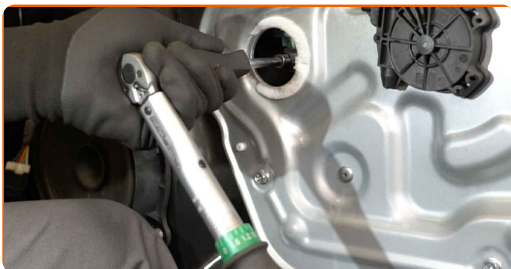


Replacement: door handle – NISSAN Pathfinder III (R51). Tip:

- To avoid injury, hold the glass when lowering it.

37

Tighten the window glass fasteners. Use a drive socket #10. Use a torque wrench. Tighten it to 10 nm torque.

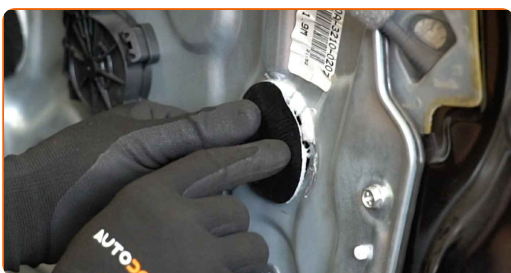


Replacement: door handle – NISSAN Pathfinder III (R51). AUTODOC recommends:

- Do not apply too much force when tightening the fasteners. Overtightening may damage the glass.

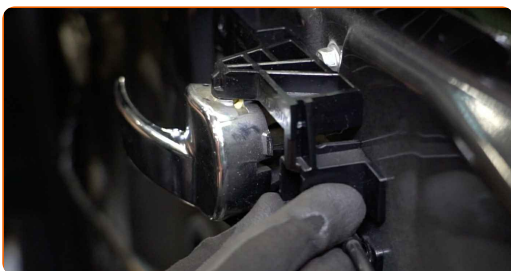
38

Install the covers on the window raiser fasteners.



39

Install the interior door handle.



40

Screw in the interior door handle fastener. Use a drive socket #10. Use a torque wrench. Tighten it to 10 nm torque.



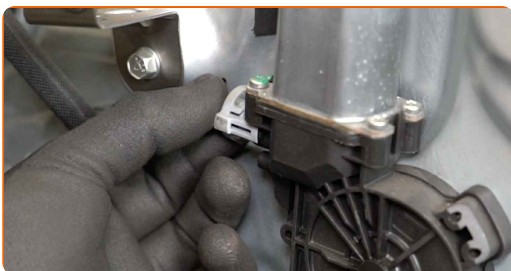
41

Tighten the door panel fasteners. Use a drive socket #10. Use a torque wrench. Tighten it to 10 nm torque.



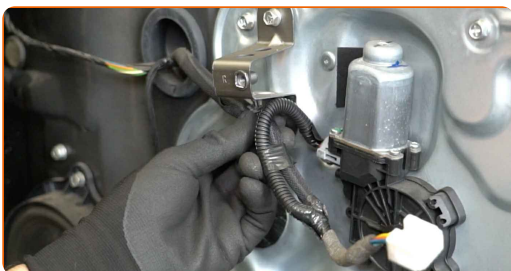
42

Attach the power window connector.



43

Attach the power window wiring harness.



Replacement: door handle – NISSAN Pathfinder III (R51). Tip from AUTODOC:

- Check if the window regulator functions correctly.

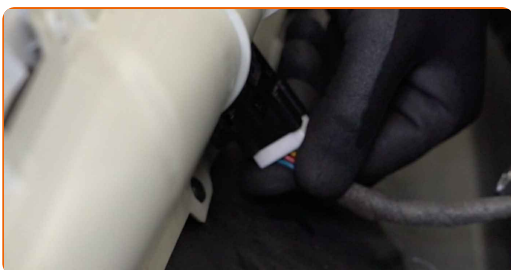
44 Detach the power window connector from the switch module.



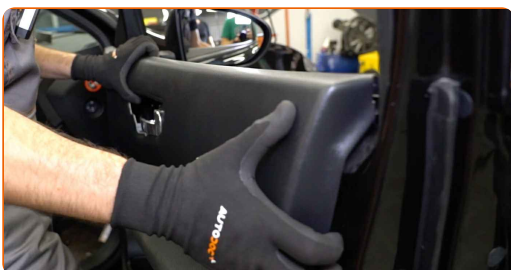
45 Install the power window switch module.



46 Attach the power window connector to the switch module.



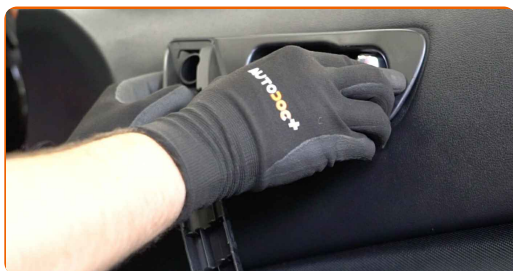
47 Reinstall the door card. Make sure you hear a click indicating that it is locked in place.



AUTODOC recommends:

- Replacement: door handle – NISSAN Pathfinder III (R51). To avoid damaging the part during installation, do not use excessive force.

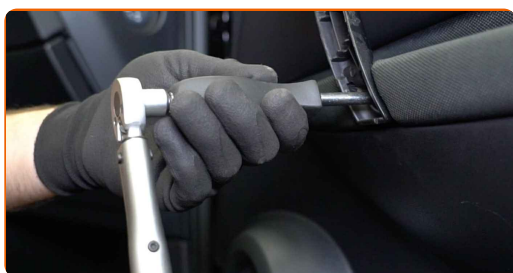
48 Install the door handle.



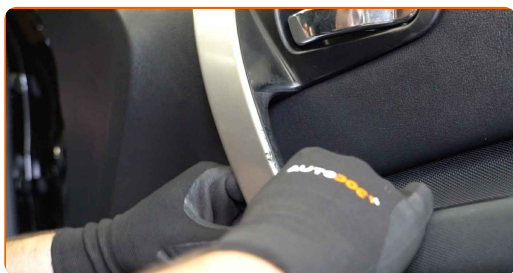
Replacement: door handle – NISSAN Pathfinder III (R51). Tip:

- When installing, do not use excessive force to avoid damage to the part.

49 Tighten the door handle fastener. Use a drive socket #10. Use a torque wrench. Tighten it to 10 nm torque.



50 Attach the door handle trim panel.

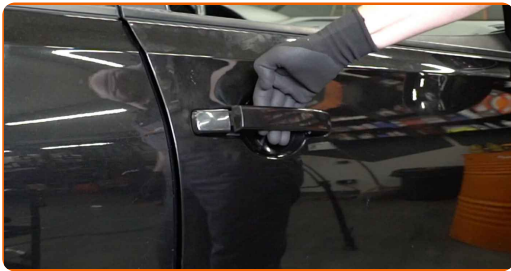


Replacement: door handle – NISSAN Pathfinder III (R51). Professionals recommend:

- When installing, do not use excessive force to avoid damage to the part.

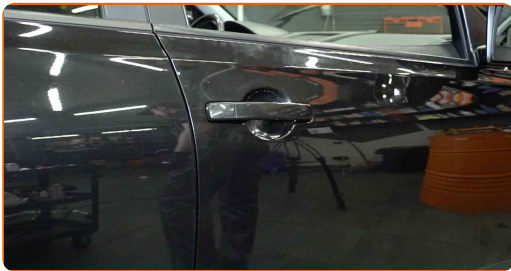
51

Check if the handle works correctly.



52

Close the car door.



WELL DONE! 

VIEW MORE TUTORIALS

AUTODOC – TOP QUALITY AND AFFORDABLE CAR PARTS ONLINE

AUTODOC MOBILE APP: GREAT DEALS AND CONVENIENT SHOPPING



+ AUTODOC

GET IT ON
Google Play

Download on the
App Store

Download

A GREAT SELECTION OF SPARE PARTS FOR YOUR CAR

DOOR HANDLE: A WIDE SELECTION

DISCLAIMER:

The document contains only general recommendations that may be useful for you when you perform repair or replacement work. AUTODOC shall not be liable for any loss, injury, damage of property occurring in the repair or replacement process due to incorrect use or misinterpretation of the provided information.

AUTODOC shall not be liable for any possible mistakes and uncertainties in this guide. The information provided is for information purposes only and cannot replace advice from specialists.

AUTODOC shall not be liable for incorrect or hazardous usage of equipment, tools and car parts. AUTODOC strongly recommends to be careful and observe the safety rules when performing repair or replacement works. Remember: usage of low quality auto parts does not guarantee you the appropriate level of road safety.

© Copyright 2022 – All the contents of this website, in particular texts, photographs and graphics, are protected by copyright. All rights, including reproduction, publication, editing and translation rights, are reserved by AUTODOC GmbH.