



How to change fuel filter  
on **NISSAN Note (E11,  
NE11)** – replacement  
guide

## SIMILAR VIDEO TUTORIAL



This video shows the replacement procedure of a similar car part on another vehicle

### Important!

This replacement procedure can be used for:

NISSAN Note (E11, NE11) 1.4, NISSAN Note (E11, NE11) 1.6, NISSAN Note (E11, NE11) 1.4 LPG

The steps may slightly vary depending on the car design.

This tutorial was created based on the replacement procedure for a similar car part on: NISSAN MICRA III (K12) 1.4 16V

REPLACEMENT: FUEL FILTER – NISSAN NOTE (E11, NE11). LIST OF THE TOOLS YOU'LL NEED:



- All-purpose cleaning spray
- Drive socket # 10
- Drive socket # 17
- Ratchet wrench
- Clip removal tool
- Phillips screwdriver
- Fuel line pliers
- Universal fuel pump removal tool
- Fluid container
- Fender cover

**Buy tools**

Replacement: fuel filter – NISSAN Note (E11, NE11). AUTODOC experts recommend:

- Ensure adequate ventilation of the workplace. Fuel vapors are poisonous.
- All work should be done with the engine stopped.

## REPLACEMENT: FUEL FILTER – NISSAN NOTE (E11, NE11). TAKE THE FOLLOWING STEPS:

**1** Open the bonnet.

**2** Use a fender protection cover to prevent damaging paintwork and plastic parts of the car.

**3** Disconnect the earth cable terminal from the battery. Use a drive socket #10. Use a ratchet wrench.



**4** Open the fuel door.



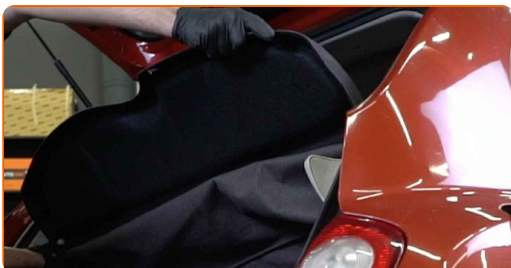
5 Unscrew the fuel filler cap.



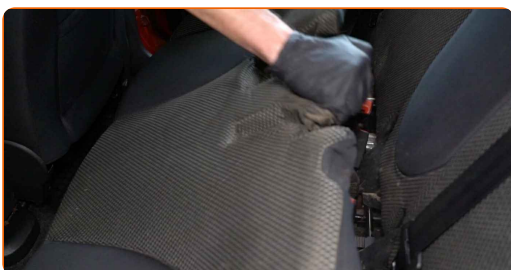
6 Open the boot lid.



7 Detach the parcel shelf.



8 Remove the lower part of the rear seat.



9 Remove the plastic covers of the rear seat rails. Use a clip removal tool.



**10** Unscrew the front fasteners of the rear seat rails. Use a drive socket #17. Use a ratchet wrench.



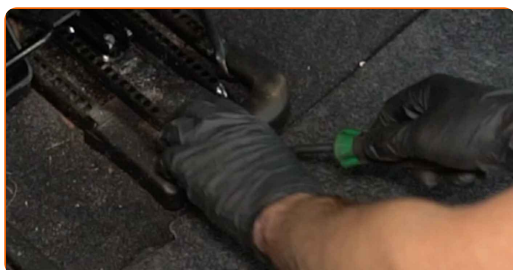
**11** Remove the fastening bolts.



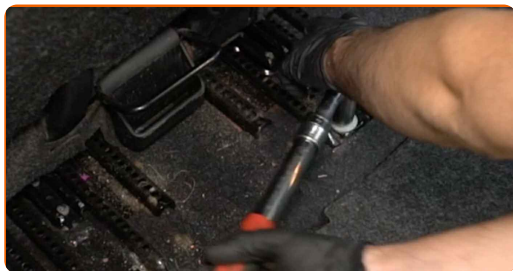
**12** Slide the rear seat forward as far as it will go.



**13** Remove the plastic covers of the rear seat rails. Use a clip removal tool.

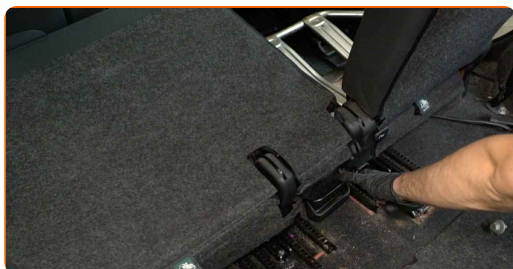


**14** Unscrew the rear fasteners of the rear seat rails. Use a drive socket #17. Use a ratchet wrench.

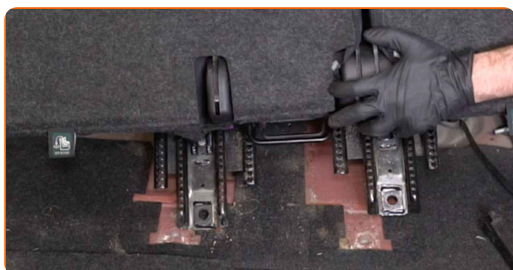


**15** Remove the fastening bolts.

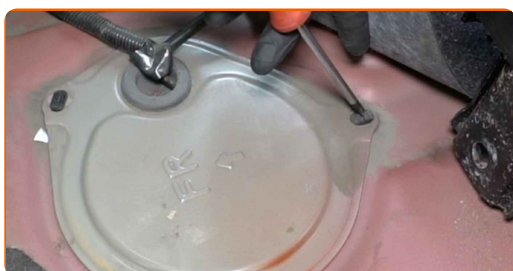
**16** Lower the rear seat backrest.



**17** Move the rear seat rails to the side along with the backrest.



**18** Release the retainers on the fuel pump module access cover. Use a Phillips screwdriver.



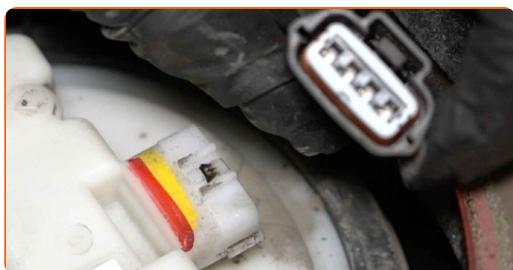
**19** Remove the fuel pump module access cover. Use a clip removal tool.



**20** Clean the fuel pump module's mounting seat. Use all-purpose cleaning spray.



**21** Detach the fuel pump module connector.



**22** Detach the fuel line from the fuel pump module. Use fuel line pliers.



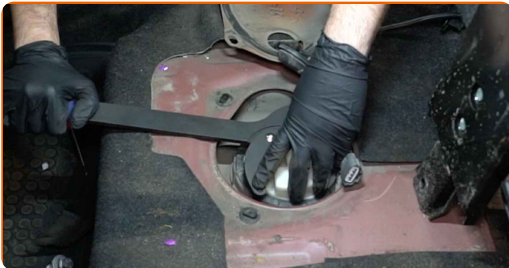


Replacement: fuel filter – NISSAN Note (E11, NE11). AUTODOC recommends:

- Caution! The line is under pressure. Use safety glasses when disconnecting it.
- Warning: when detaching the fuel line some fuel may leak out.

23

Unscrew the fuel pump module lock nut. Use a universal fuel pump removal tool.



24

Prepare a container for fluids.



25

Take out the fuel pump module.



**26** Install a new fuel pump module.



**Replacement: fuel filter – NISSAN Note (E11, NE11). Tip:**

- In this case, the fuel filter is built into the fuel pump module and cannot be removed and replaced separately.
- Use only new O-rings during installation.
- If necessary, attach the float arm to the fuel pump module.

**27** Install and screw on the fuel pump module lock nut. Use a universal fuel pump removal tool.



**28** Clean the fuel line connector. Use all-purpose cleaning spray.



**29** Connect the fuel line to the fuel pump module.



**30** Attach the fuel pump module connector.



**31** Remove any spilt fuel from the fuel tank.



**32** Connect the earth cable terminal to the battery. Use a drive socket #10. Use a ratchet wrench.



**33** Tighten the fuel filler cap.

**34** Close the fuel door.

**AUTODOC recommends:**

- Before starting off, switch the ignition on and off several times. This should be done to activate the fuel pump to make it pump fuel through the fuel system.

**35**

Run the engine for a few minutes.

**Replacement: fuel filter – NISSAN Note (E11, NE11). Tip from AUTODOC:**

- This is necessary in order to make sure that the component operates properly.

**36**

Shut off the engine.

**AUTODOC recommends:**

- Check the fuel line connections for leaks.
- To protect the environment from pollution, be sure to dispose of the used filters at special collection points.

**37**

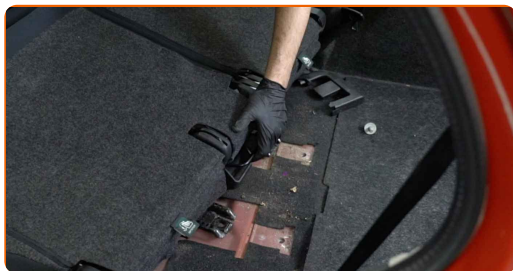
Reinstall the fuel pump module cover.



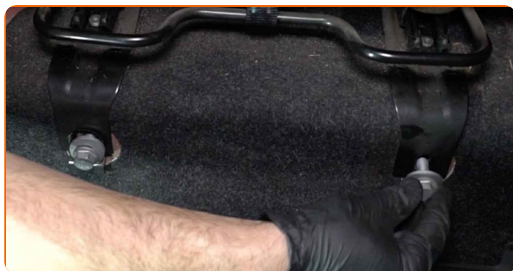
**38** Turn the retainers of the fuel pump module cover to lock it in place. Use a Phillips screwdriver.



**39** Reinstall the rear seat rails together with the backrest.



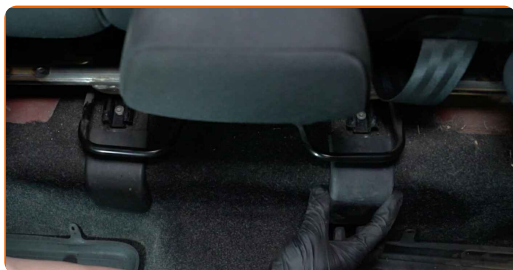
**40** Install the fastening bolts.



**41** Screw in the front fasteners of the rear seat rails. Use a drive socket #17. Use a ratchet wrench.

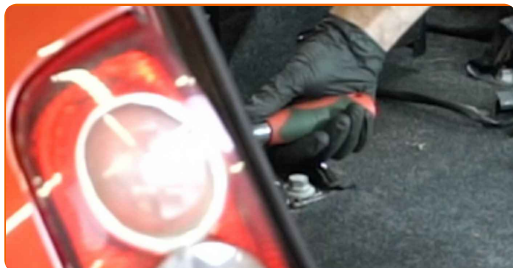


**42** Reinstall the plastic covers of the rear seat rails.



**43** Install the fastening bolts.

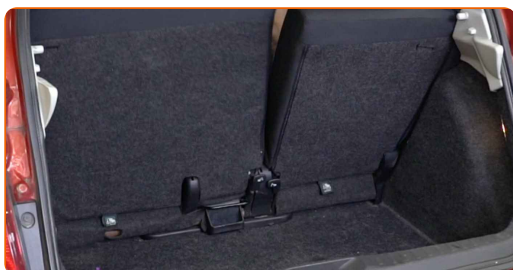
**44** Screw in the rear fasteners of the rear seat rails. Use a drive socket #17. Use a ratchet wrench.



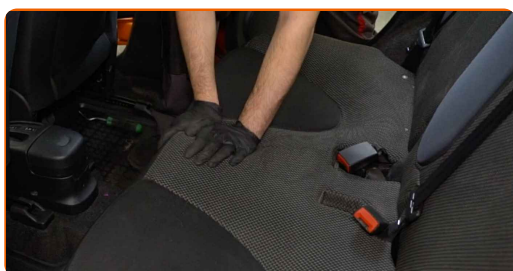
**45** Reinstall the plastic covers of the rear seat rails.



**46** Raise the rear seat backrest.

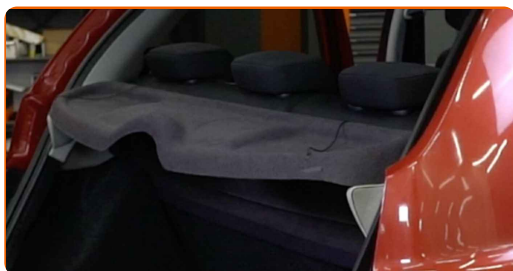


**47** Reinstall the lower part of the rear seat.



48

Reinstall the parcel shelf.



49

Close the boot lid.

50

Remove the fender protection cover.

51

Close the bonnet.

**WELL DONE!** 

**VIEW MORE TUTORIALS**

# AUTODOC – TOP QUALITY AND AFFORDABLE CAR PARTS ONLINE

**AUTODOC MOBILE APP: GREAT DEALS AND CONVENIENT SHOPPING**



**+ AUTODOC**

GET IT ON  
 **Google Play**

 **Download on the App Store**

**Download**

**A GREAT SELECTION OF SPARE PARTS FOR YOUR CAR**

**FUEL FILTER: A WIDE SELECTION**

## **DISCLAIMER:**

The document contains only general recommendations that may be useful for you when you perform repair or replacement work. AUTODOC shall not be liable for any loss, injury, damage of property occurring in the repair or replacement process due to incorrect use or misinterpretation of the provided information.

AUTODOC shall not be liable for any possible mistakes and uncertainties in this guide. The information provided is for information purposes only and cannot replace advice from specialists.

AUTODOC shall not be liable for incorrect or hazardous usage of equipment, tools and car parts. AUTODOC strongly recommends to be careful and observe the safety rules when performing repair or replacement works. Remember: usage of low quality auto parts does not guarantee you the appropriate level of road safety.

© Copyright 2023 – All the contents of this website, in particular texts, photographs and graphics, are protected by copyright. All rights, including reproduction, publication, editing and translation rights, are reserved by AUTODOC SE.