



How to change front  
wheel bearing on  
**NISSAN Micra IV**  
**Hatchback (K13KK) –**  
replacement guide

## SIMILAR VIDEO TUTORIAL



This video shows the replacement procedure of a similar car part on another vehicle

### Important!

This replacement procedure can be used for:

NISSAN Micra IV Hatchback (K13KK) 1.2, NISSAN Micra IV Hatchback (K13KK) 1.2 DIG-S

The steps may slightly vary depending on the car design.

This tutorial was created based on the replacement procedure for a similar car part on: NISSAN MICRA III (K12) 1.4 16V

**REPLACEMENT: WHEEL BEARING – NISSAN MICRA IV HATCHBACK (K13KK). TOOLS YOU'LL NEED:**



- Wire brush
- Nylon cleaning brush
- WD-40 spray
- All-purpose cleaning spray
- Brake cleaner
- Copper grease
- Ceramic grease
- Torque wrench
- Combination spanner #16
- Combination spanner #17
- Drive socket # 14
- Drive socket # 16
- Drive socket # 17
- Drive socket # 18
- Drive socket # 30
- Torx bit T40
- Wheel impact socket #17
- Ratchet wrench
- Tap wrench
- Pin punch
- Impact screwdriver
- Hammer
- Ball joint puller
- Flat chisel
- Flat screwdriver
- Circlip pliers
- Bush and bearing driver set
- Bearing separator
- Wheel chock

**Buy tools**

Replacement: wheel bearing – NISSAN Micra IV Hatchback (K13KK).  
AUTODOC experts recommend:

- Do not re-use the bearing assembly of your NISSAN Micra IV Hatchback (K13KK) car.
- The wheel hub bearing replacement procedure is identical for both wheels on the same axle.
- Please note: all work on the car – NISSAN Micra IV Hatchback (K13KK) – should be done with the engine switched off.

**CARRY OUT REPLACEMENT IN THE FOLLOWING ORDER:**

**1** Secure the wheels with chocks.

**2** Loosen the wheel bolts. Use wheel impact socket #17. Use a tap wrench.



**3** Raise the car.

AUTODOC recommends:

- If you are using a jack, make sure it rests on a flat surface without any unevenness.
- Be sure to additionally secure the car with jack stands.

**4** Unscrew the wheel bolts.



Replacement: wheel bearing – NISSAN Micra IV Hatchback (K13KK). Tip:

- To avoid injury, hold up the wheel when unscrewing the bolts.

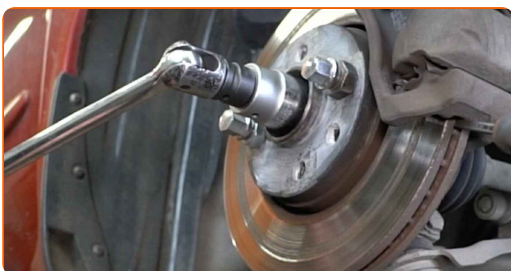
**5** Remove the wheel.



**6** Clean the fastener of the driveshaft. Use a wire brush. Use WD-40 spray.



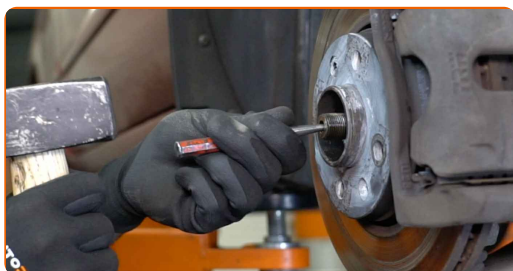
**7** Unscrew the fastener connecting the drive shaft to the wheel hub. Use a drive socket #30. Use a tap wrench.



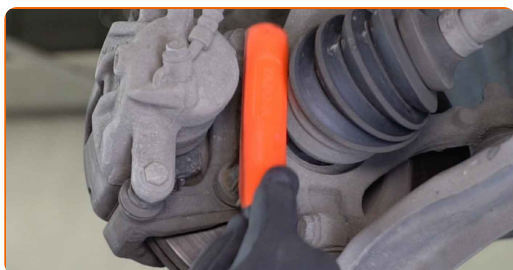
**8** Remove the fastening nut.



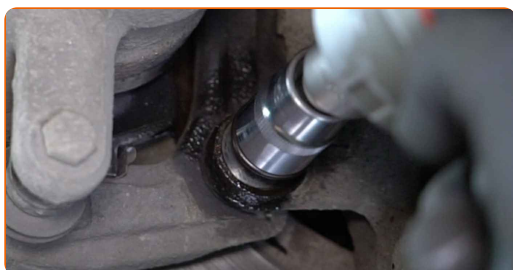
**9** Detach the driveshaft from the steering knuckle. Use a pin punch. Use a hammer.



**10** Clean the brake caliper bracket fasteners. Use a wire brush. Use WD-40 spray.



**11** Unscrew the brake caliper bracket fasteners. Use a drive socket #17. Use a ratchet wrench.



**12** Remove the fastening bolts.

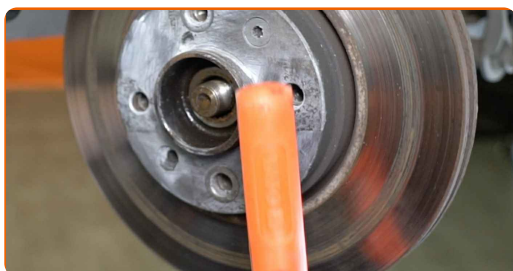
**13** Remove the brake caliper together with its bracket.



Replacement: wheel bearing – NISSAN Micra IV Hatchback (K13KK).  
AUTODOC recommends:

- Tie the caliper to the suspension or to the body with a wire without disconnecting from the brake hose to prevent depressurization of the brake system.
- Make sure that the brake caliper is not hanging on the brake hose.
- Don't press the brake pedal after the brake caliper has been removed. As a result, the piston can fall out from the brake cylinder, and brake fluid leakage and depressurization of the system may occur.

**14** Clean the brake disc fasteners. Use a wire brush. Use WD-40 spray.

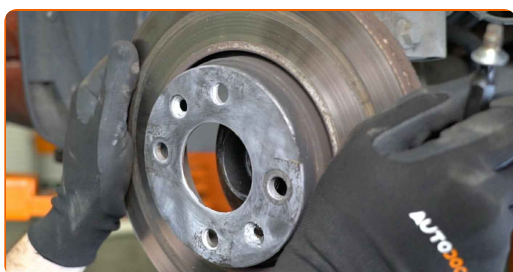


**15** Unscrew the brake disc fasteners. Use Torx T40. Use an impact screwdriver.

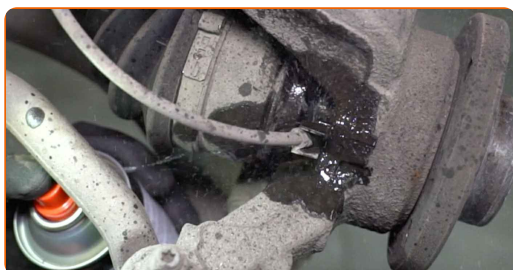


**16** Remove the fastening bolts.

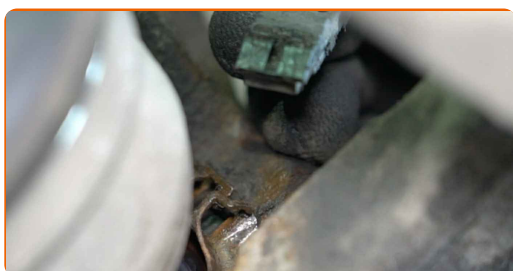
**17** Remove the brake disc.



**18** Clean the ABS sensor fastener. Use a nylon cleaning brush. Use all-purpose cleaning spray.



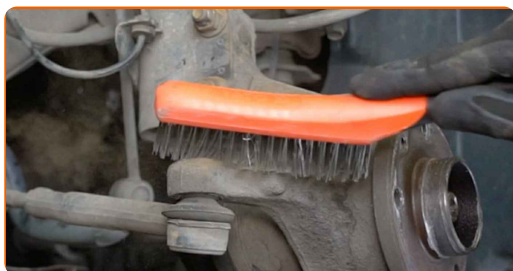
**19** Disconnect the ABS sensor.





20

Clean the fastener connecting the tie rod end to the steering knuckle. Use a wire brush. Use WD-40 spray.



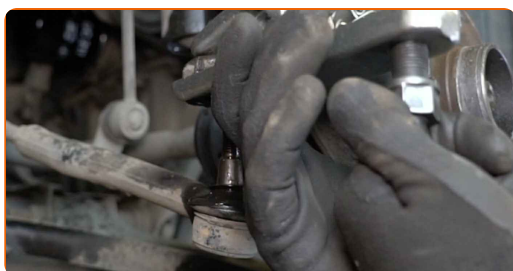
21

Unscrew the fastening nut connecting the tie rod end to the steering knuckle. Use a drive socket #14. Use a ratchet wrench.



22

Disconnect the tie rod end from the steering knuckle. Use a ball joint puller.

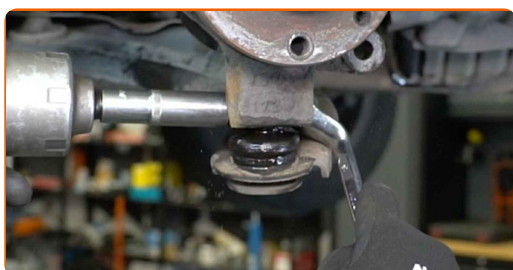


23

Clean the fastener connecting the ball joint to the steering knuckle. Use a wire brush. Use WD-40 spray.

24

Unscrew the fastener that connects the ball joint of the lower arm to the steering knuckle. Use a combination spanner #16. Use a drive socket #16. Use a ratchet wrench.



**25** Remove the fastening bolt.



**26** Clean the fasteners connecting the shock strut to the steering knuckle. Use a wire brush. Use WD-40 spray.

**27** Unscrew the lower suspension strut fasteners. Use a combination spanner #17. Use a drive socket #18. Use a ratchet wrench.

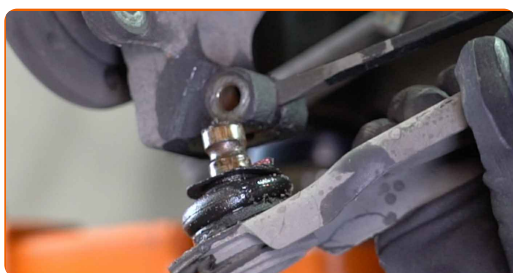


**28** Remove the fastening bolts.

**29** Release the fastener connecting the ball joint to the steering knuckle. Use a flat metal-working chisel. Use a hammer.



**30** Disconnect the ball joint from the steering knuckle.



**31** Pull the CV axle out of the steering knuckle, lift it up, and tie it to the body.



**32** Disconnect the steering knuckle from the suspension strut.



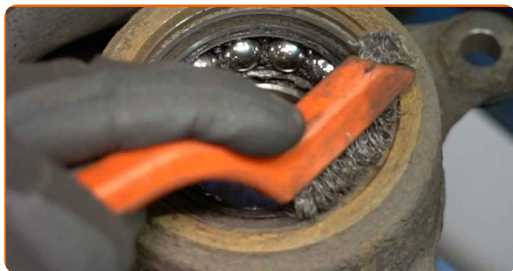
**33** Remove the steering knuckle together with the wheel hub.



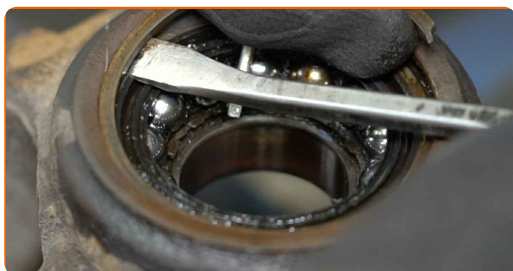
**34** Remove the wheel hub from the steering knuckle. Use a bush and bearing driver set.



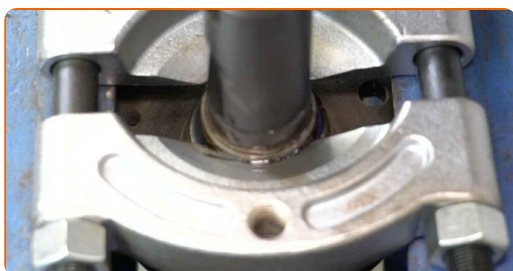
**35** Clean the wheel hub bearing retaining ring. Use a wire brush. Use WD-40 spray.



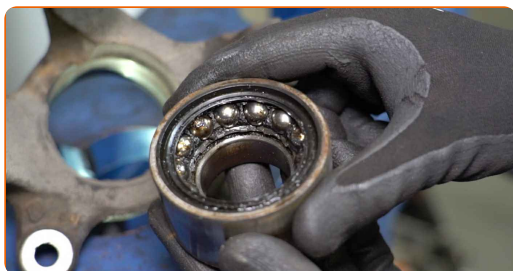
**36** Remove the wheel hub bearing retaining ring. Use a flat screwdriver.



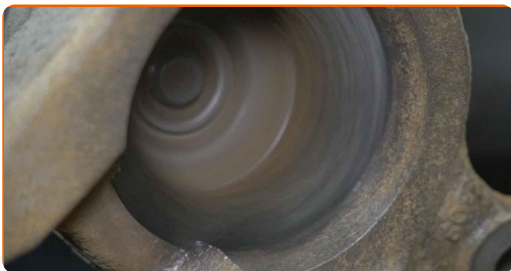
**37** Dismantle the inner bearing race that is remaining on the hub. Use a bush and bearing driver set. Use a bearing separator.



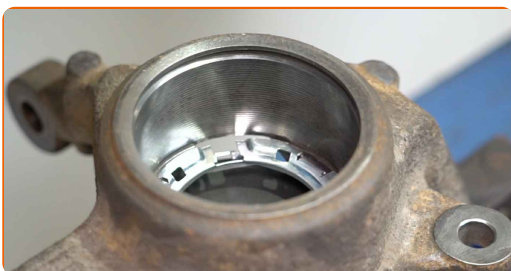
**38** Press out the wheel hub bearing. Use a bush and bearing driver set.



**39** Clean the hub bearing mounting seat. Use a wire brush.



**40** Install a new ABS sensor mounting ring.



**41** Press-fit the new bearing into the steering knuckle. Use a bush and bearing driver set.



**AUTODOC recommends:**

- Check to make sure the wheel hub bearing is positioned correctly. Avoid its misalignment.

**42** Install the wheel hub bearing retaining ring. Use circlip pliers.



**43** Install the wheel hub on the steering knuckle. Use a bush and bearing driver set.



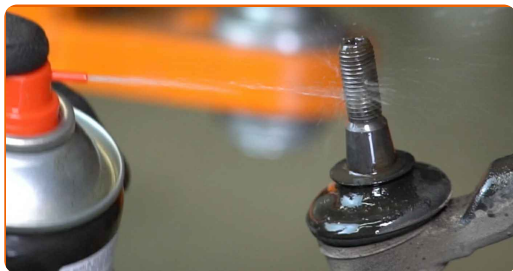
Replacement: wheel bearing – NISSAN Micra IV Hatchback (K13KK).  
AUTODOC experts recommend:

- Make sure that the wheel hub is positioned correctly. Avoid any misalignment.

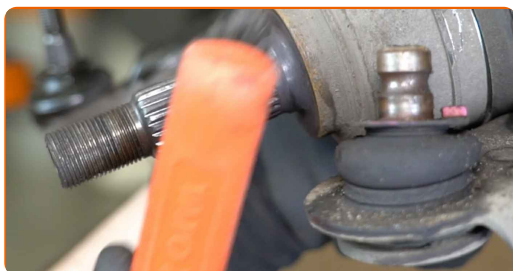
**44** Clean the steering knuckle mounting seats. Use a wire brush. Use all-purpose cleaning spray.



**45** Clean the tie rod end fastener. Use a wire brush. Use all-purpose cleaning spray.



**46** Clean the splines of the drive shaft CV joint. Use a wire brush. Use all-purpose cleaning spray.



**47** Treat the splines of the driveshaft CV joint. Use copper grease.

**48** Clean the fastener connecting the ball joint to the steering knuckle. Use a wire brush. Use all-purpose cleaning spray.



**49** Install the steering knuckle assembled with the wheel hub.



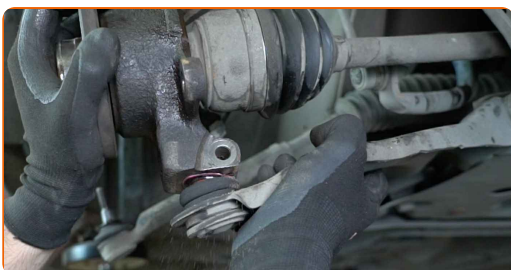
**50** Fasten the suspension strut on the steering knuckle.



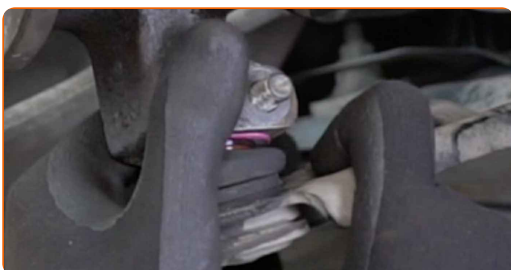
**51** Install the drive shaft.



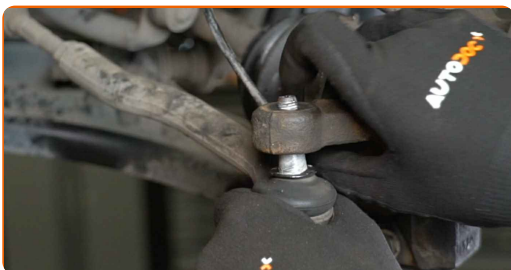
**52** Connect the ball joint to the steering knuckle.



**53** Install the fastening bolts.



**54** Connect the tie rod end to the steering knuckle.





- 55** Tighten the fastening nut connecting the tie rod end to the steering knuckle. Use a drive socket #14. Use a torque wrench. Tighten it to 35 Nm torque.



- 56** Tighten the fastener that connects the lower arm ball joint to the steering knuckle. Use a combination spanner #16. Use a drive socket #16. Use a torque wrench. Tighten it to 37 Nm torque.



- 57** Tighten the lower fasteners connecting the shock strut to the steering knuckle. Use a combination spanner #17. Use a drive socket #18. Use a torque wrench. Tighten it to 116 Nm torque.



- 58** Install the ABS sensor.



**59** Install the fastening nut.



**60** Screw in the fastener of the CV axle. Use a drive socket #30. Use a ratchet wrench.

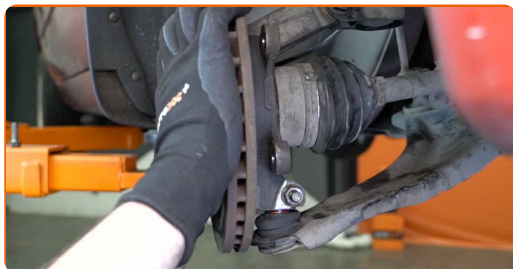


**61** Clean the wheel hub. Use a wire brush.



**62** Treat the contacting surface. Use ceramic grease.

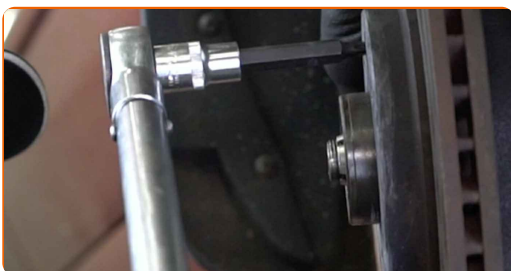
**63** Install the brake disc.



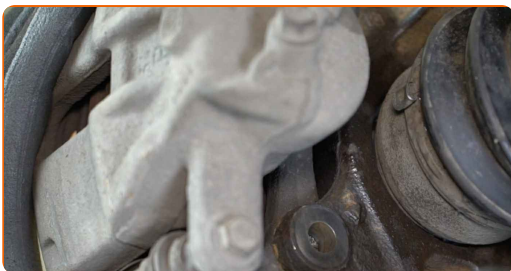
**64** Install the fastening bolts.



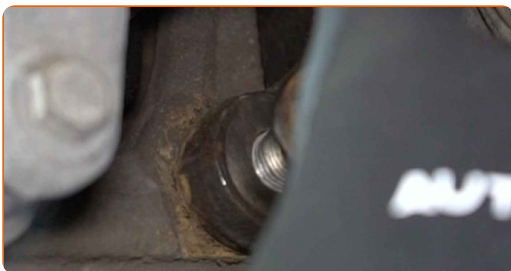
**65** Tighten the brake disc fasteners. Use Torx T40. Use a torque wrench. Tighten it to 10 Nm torque.



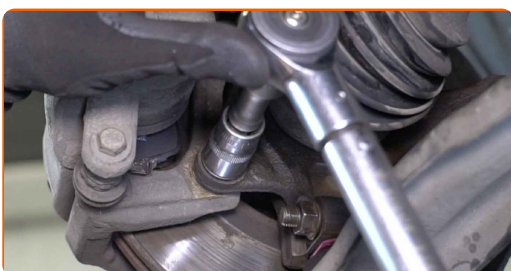
**66** Install the brake caliper together with its bracket.



**67** Install the fastening bolts.



**68** Tighten the brake caliper bracket fasteners. Use a drive socket #17. Use a torque wrench. Tighten it to 105 Nm torque.



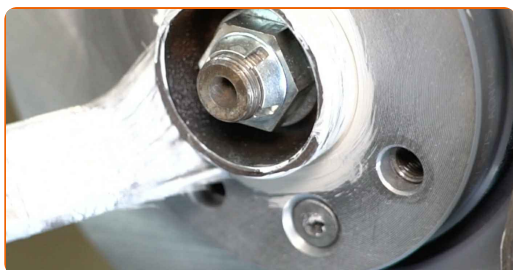
**69** Tighten the CV axle fastener. Use a drive socket #30. Use a torque wrench. Tighten it to 238 Nm torque.



**70** Clean the wheel rim mounting seat. Use a wire brush.



**71** Treat the surface where the brake disc contacts the wheel rim. Use ceramic grease.



**72** Clean the brake disk surface. Use a brake cleaner.

**73** Install the wheel.

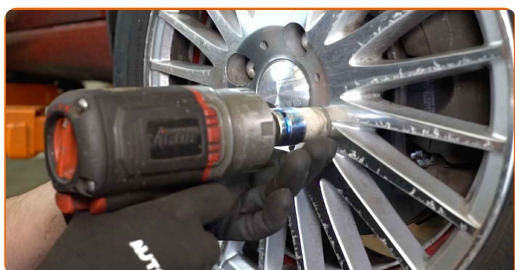


**AUTODOC recommends:**

- Warning! To avoid injury, hold the wheel while screwing in the fastening bolts on the car. NISSAN Micra IV Hatchback (K13KK)

**74**

Screw in the wheel bolts. Use wheel impact socket #17. Use a ratchet wrench.



**75**

Lower the car and working in a cross order, tighten the wheel bolts. Use wheel impact socket #17. Use a torque wrench. Tighten it to 110 Nm torque.



**76**

Remove the jacks and chocks.



**WELL DONE!** 

**VIEW MORE TUTORIALS**

# AUTODOC – TOP QUALITY AND AFFORDABLE CAR PARTS ONLINE

**AUTODOC MOBILE APP: GREAT DEALS AND CONVENIENT SHOPPING**



**+ AUTODOC**

GET IT ON  
**Google Play**

Download on the  
**App Store**

**Download**

**A GREAT SELECTION OF SPARE PARTS FOR YOUR CAR**

**WHEEL BEARING: A WIDE SELECTION**

## **DISCLAIMER:**

The document contains only general recommendations that may be useful for you when you perform repair or replacement work. AUTODOC shall not be liable for any loss, injury, damage of property occurring in the repair or replacement process due to incorrect use or misinterpretation of the provided information.

AUTODOC shall not be liable for any possible mistakes and uncertainties in this guide. The information provided is for information purposes only and cannot replace advice from specialists.

AUTODOC shall not be liable for incorrect or hazardous usage of equipment, tools and car parts. AUTODOC strongly recommends to be careful and observe the safety rules when performing repair or replacement works. Remember: usage of low quality auto parts does not guarantee you the appropriate level of road safety.

© Copyright 2023 – All the contents of this website, in particular texts, photographs and graphics, are protected by copyright. All rights, including reproduction, publication, editing and translation rights, are reserved by AUTODOC SE.