



How to change front
brake pads on **NISSAN**
MAXIMA – replacement
guide

SIMILAR VIDEO TUTORIAL



This video shows the replacement procedure of a similar car part on another vehicle

Important!

This replacement procedure can be used for:

NISSAN MAXIMA 3.5

The steps may slightly vary depending on the car design.

This tutorial was created based on the replacement procedure for a similar car part on: NISSAN Qashqai / Qashqai +2 I (J10, NJ10) 1.6

**REPLACEMENT: BRAKE PADS – NISSAN MAXIMA.
TOOLS YOU MIGHT NEED:**



- Wire brush
- Nylon cleaning brush
- WD-40 spray
- All-purpose cleaning spray
- Brake cleaner
- Anti-squeal paste
- Copper grease
- Torque wrench
- Combination spanner #17
- Drive socket # 14
- Wheel impact socket #21
- Ratchet wrench
- Brake caliper wind back tool
- Crow bar
- Wheel chock

Buy tools

Replacement: brake pads – NISSAN MAXIMA. Tip from AUTODOC experts:

- Perform the replacement of brake pads in complete set for each axis. This provides effective braking.
- The replacement procedure is identical for all brake pads on the same axle.
- All work should be done with the engine stopped.

REPLACEMENT: BRAKE PADS – NISSAN MAXIMA. TAKE THE FOLLOWING STEPS:

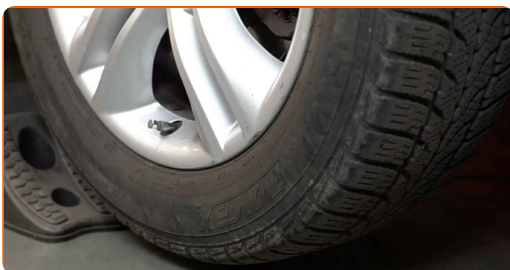
1 Open the bonnet. Unscrew the brake fluid reservoir cap.

2 Secure the wheels with chocks.

3 Loosen the wheel mounting bolts. Use wheel impact socket #21.



4 Raise the front of the car and secure on supports.



5

Unscrew the wheel bolts.



AUTODOC recommends:

- Important! Hold the wheel while unscrewing the fastening bolts. NISSAN MAXIMA

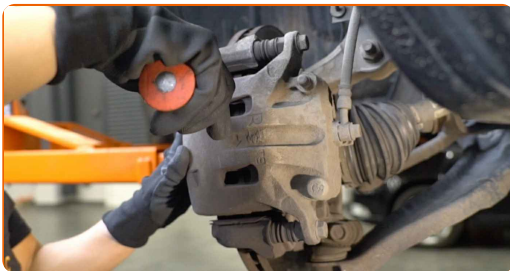
6

Remove the wheel.



7

Spread the brake pads. Use a crowbar.



8

Clean the brake caliper fasteners. Use a wire brush. Use WD-40 spray.



- 9** Unscrew the brake caliper fastening. Use a combination spanner #17. Use a drive socket #14. Use a ratchet wrench.



- 10** Remove the brake caliper.



Replacement: brake pads – NISSAN MAXIMA. Professionals recommend:

- Tie the caliper to the suspension or to the body with a wire without disconnecting from the brake hose to prevent depressurization of the brake system.
- Make sure that the brake caliper is not hanging on the brake hose.
- Don't press the brake pedal after the brake caliper has been removed. As a result, the piston can fall out from the brake cylinder, and brake fluid leakage and depressurization of the system may occur.
- Check the brake caliper bracket, brake caliper guide pins and boots. Clean them. Replace, if necessary.

11

Remove the brake pads. Use a crowbar.



AUTODOC recommends:

- Measure the brake disc thickness. Upon reaching the wear limit the part must be replaced.

12

Clean the brake caliper bracket from dirt and dust. Use a wire brush. Use all-purpose cleaning spray.



13

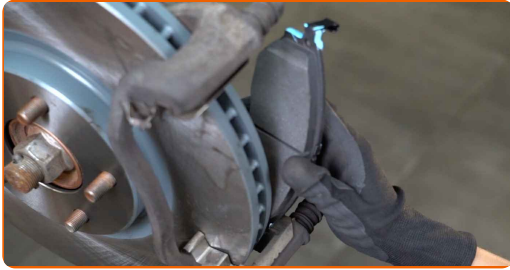
Treat the brake pads in the area where their surface comes into contact with the brake caliper bracket. Use anti-squeal paste.



Replacement: brake pads – NISSAN MAXIMA. Tip:

- Make sure the disc surface is clean before installing the pads.

14 Install new brake pads.



Replacement: brake pads – NISSAN MAXIMA. AUTODOC recommends:

- Make sure the pads are installed with linings facing the disc.

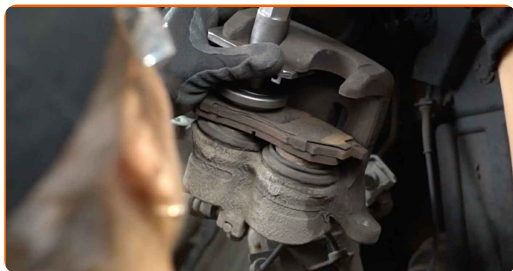
15 Treat the brake caliper piston. Use a nylon cleaning brush. Use a brake cleaner.



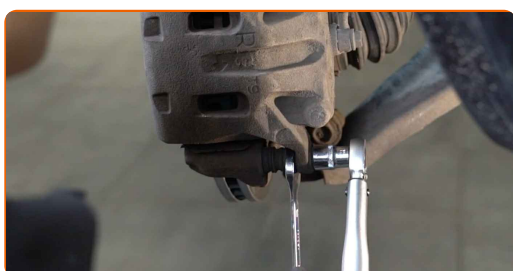
AUTODOC recommends:

- Replacement: brake pads – NISSAN MAXIMA. After applying the spray, wait a few minutes.

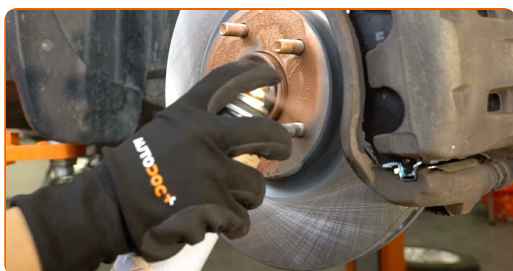
16 Press in the brake caliper piston. Use brake caliper wind back tool.



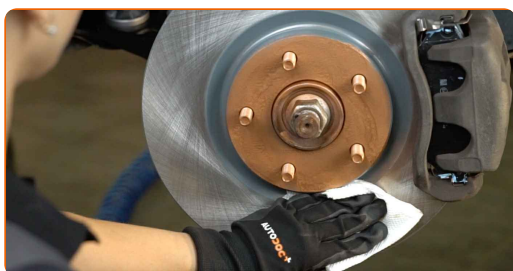
17 Install the brake caliper and fix it. Use a combination spanner #17. Use a drive socket #14. Use a torque wrench. Tighten it to 34 Nm torque.



18 Treat the surface where the brake disc contacts the wheel rim. Use copper grease.



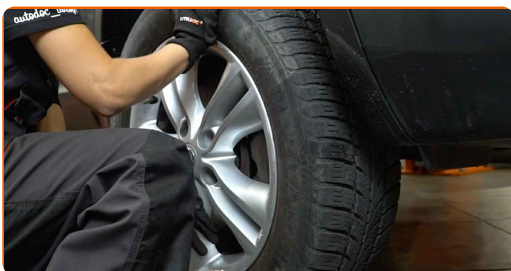
19 Clean the brake disk surface. Use a brake cleaner.



Replacement: brake pads – NISSAN MAXIMA. AUTODOC experts recommend:

- After applying the spray, wait a few minutes.

20 Install the wheel.



AUTODOC recommends:

- Important! Hold the wheel while screwing in the fastening bolts. NISSAN MAXIMA

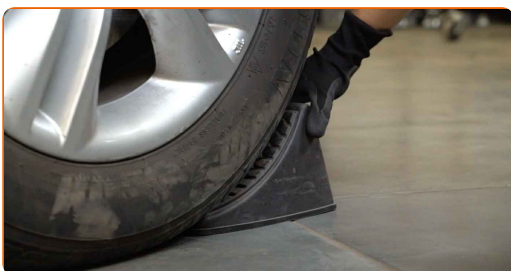
21 Screw in the wheel bolts. Use wheel impact socket #21.



22 Lower the car and working in a cross order, tighten the wheel bolts. Use wheel impact socket #21. Use a torque wrench. Tighten it to 112 Nm torque.



23 Remove the jacks and chocks.



AUTODOC recommends:

- Important! Replacement: brake pads – NISSAN MAXIMA. Check the brake fluid level in the reservoir and top up if necessary.

24

Tighten the brake fluid reservoir cap.



AUTODOC recommends:

- Without starting the engine, press the brake pedal several times until you feel significant resistance.

25

Close the hood.

Replacement: brake pads – NISSAN MAXIMA. Tip from AUTODOC experts:

- Slow down smoothly for first 150-200 km after the brake pads replacement. Avoid unnecessary and sharp braking to a stop.

WELL DONE! 

VIEW MORE TUTORIALS

AUTODOC – TOP QUALITY AND AFFORDABLE CAR PARTS ONLINE

AUTODOC MOBILE APP: GREAT DEALS AND CONVENIENT SHOPPING



+ AUTODOC

GET IT ON
Google Play

Download on the
App Store

Download

A GREAT SELECTION OF SPARE PARTS FOR YOUR CAR

BRAKE PADS: A WIDE SELECTION

DISCLAIMER:

The document contains only general recommendations that may be useful for you when you perform repair or replacement work. AUTODOC shall not be liable for any loss, injury, damage of property occurring in the repair or replacement process due to incorrect use or misinterpretation of the provided information.

AUTODOC shall not be liable for any possible mistakes and uncertainties in this guide. The information provided is for information purposes only and cannot replace advice from specialists.

AUTODOC shall not be liable for incorrect or hazardous usage of equipment, tools and car parts. AUTODOC strongly recommends to be careful and observe the safety rules when performing repair or replacement works. Remember: usage of low quality auto parts does not guarantee you the appropriate level of road safety.

© Copyright 2023 – All the contents of this website, in particular texts, photographs and graphics, are protected by copyright. All rights, including reproduction, publication, editing and translation rights, are reserved by AUTODOC SE.