



How to change
serpentine belt on
**NISSAN Bluebird Sylphy
II Saloon (G11)** –
replacement guide

SIMILAR VIDEO TUTORIAL



This video shows the replacement procedure of a similar car part on another vehicle

Important!

This replacement procedure can be used for:
NISSAN Bluebird Sylphy II Saloon (G11) 1.6 (G15)

The steps may slightly vary depending on the car design.

This tutorial was created based on the replacement procedure for a similar car part on: RENAULT Clio III Hatchback (BR0/1, CR0/1) 1.5 dCi

REPLACEMENT: SERPENTINE BELT – NISSAN BLUEBIRD SYLPHY II SALOON (G11). TOOLS YOU NEED:



- Torque wrench
- Combination spanner #10
- Combination spanner #16
- Drive socket # 13
- Wheel impact socket #17
- Ratchet wrench
- Clip removal tool
- Fender cover
- Wheel chock

Buy tools

Replacement: serpentine belt – NISSAN Bluebird Sylphy II Saloon (G11).
AUTODOC recommends:

- All work should be done with the engine stopped.

REPLACEMENT: SERPENTINE BELT – NISSAN BLUEBIRD SYLPHY II SALOON (G11). USE THE FOLLOWING PROCEDURE:

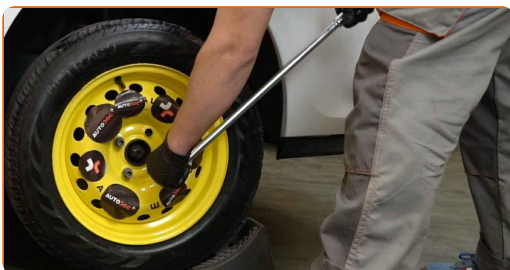
1 Open the hood.

2 Use a fender protection cover to prevent damaging paintwork and plastic parts of the car.

3 Secure the wheels with chocks.



4 Loosen the wheel mounting bolts. Use wheel impact socket #17.



5 Raise the front of the car and secure on supports.

6

Unscrew the wheel bolts.

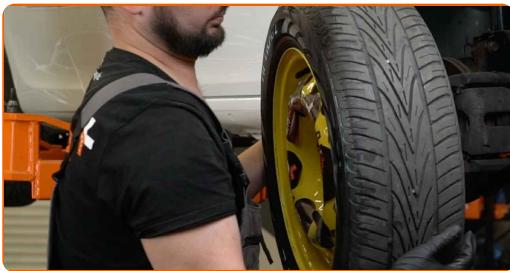


AUTODOC recommends:

- Important! Hold the wheel while unscrewing the fastening bolts. NISSAN Bluebird Sylphy II Saloon (G11)

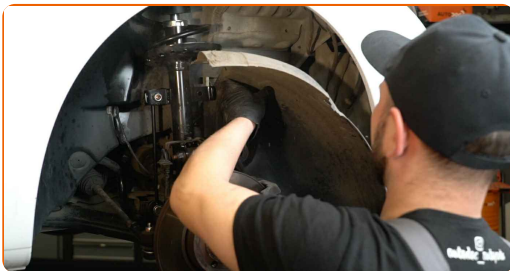
7

Remove the wheel.



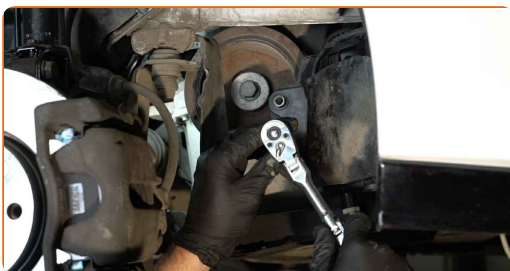
8

Remove the wheel arch cover. Use a clip removal tool.

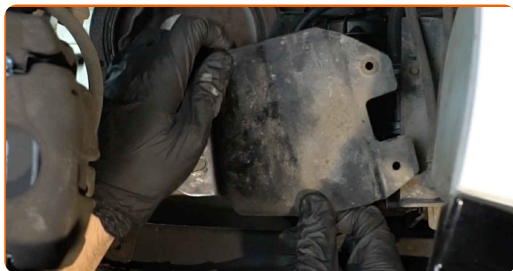


9

Unscrew the fuel filter bracket fixing bolts. Use a drive socket #13. Use a ratchet wrench.



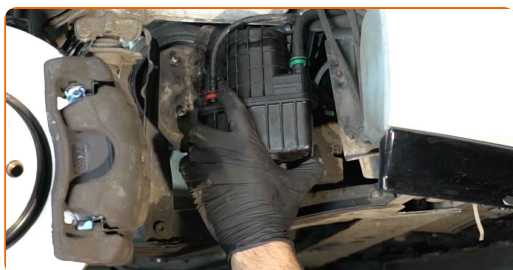
10 Remove the fuel filter fastening bracket.



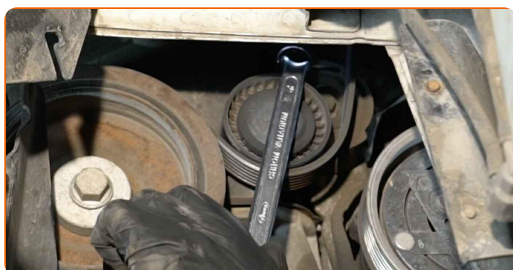
11 Unscrew the fuel filter bracket fixing bolts. Use a combination spanner #10.



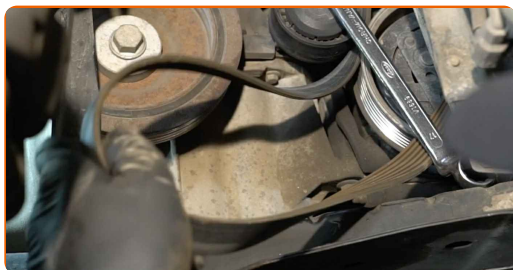
12 Remove the fuel filter fastening bracket.



13 Pull aside the V-ribbed belt tensioner pulley. Use a combination spanner #16.



14 Remove the V-ribbed belt.



15 Return the tensioner pulley to its initial position.

Replacement: serpentine belt – NISSAN Bluebird Sylphy II Saloon (G11). Tip:

- Check the condition of the tensioner pulley and idler pulley. Replace them if necessary.

16 Install the V-ribbed belt.



AUTODOC recommends:

- Make sure that the V-ribbed belt fits all pulleys snugly.

17 Pull aside the V-ribbed belt tensioner pulley. Use a combination spanner #16.



18 Place the V-ribbed belt on the tensioner pulley.



19 Return the tensioner pulley to its initial position.



20 Install the fuel filter fastening bracket.



21 Screw the fixing bolts of the fuel filter bracket. Use a combination spanner #10.



22 Install the fuel filter fastening bracket.



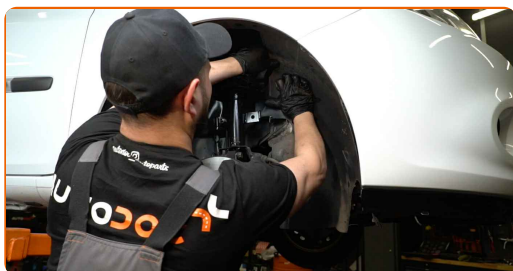
23

Screw the fixing bolts of the fuel filter bracket. Use a drive socket #13. Use a ratchet wrench.



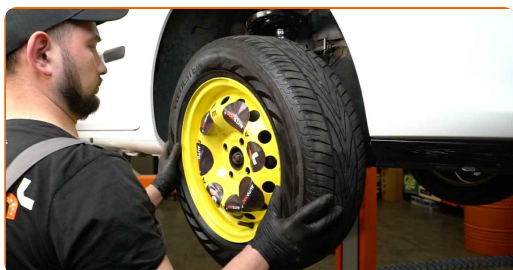
24

Install the wheel arch cover to its mounting seat.



25

Install the wheel.

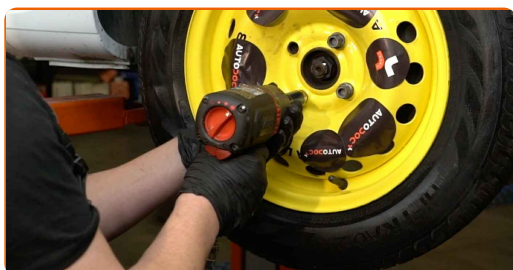


Replacement: serpentine belt – NISSAN Bluebird Sylphy II Saloon (G11). Tip from AUTODOC:

- To avoid injury, hold up the wheel when screwing in the fastening bolts.

26

Screw in the wheel bolts. Use wheel impact socket #17.



- 27 Lower the car and working in a cross order, tighten the wheel bolts. Use wheel impact socket #17. Use a torque wrench. Tighten it to 105 nm torque.



- 28 Remove the jacks and chocks.



- 29 Run the engine for a few minutes. This is necessary in order to make sure that the component operates properly.

- 30 Shut off the engine.

- 31 Remove the fender protection cover.

- 32 Close the hood.

WELL DONE! 

VIEW MORE TUTORIALS

AUTODOC – TOP QUALITY AND AFFORDABLE CAR PARTS ONLINE

AUTODOC MOBILE APP: GREAT DEALS AND CONVENIENT SHOPPING



+ AUTODOC

GET IT ON
Google Play

 Download on the
App Store

Download

A GREAT SELECTION OF SPARE PARTS FOR YOUR CAR

SERPENTINE BELT: A WIDE SELECTION

DISCLAIMER:

The document contains only general recommendations that may be useful for you when you perform repair or replacement work. AUTODOC shall not be liable for any loss, injury, damage of property occurring in the repair or replacement process due to incorrect use or misinterpretation of the provided information.

AUTODOC shall not be liable for any possible mistakes and uncertainties in this guide. The information provided is for information purposes only and cannot replace advice from specialists.

AUTODOC shall not be liable for incorrect or hazardous usage of equipment, tools and car parts. AUTODOC strongly recommends to be careful and observe the safety rules when performing repair or replacement works. Remember: usage of low quality auto parts does not guarantee you the appropriate level of road safety.

© Copyright 2022 – All the contents of this website, in particular texts, photographs and graphics, are protected by copyright. All rights, including reproduction, publication, editing and translation rights, are reserved by AUTODOC GmbH.